



# Bernard Dewagtere

France, SIN LE NOBLE

## Michael Row the Boat Ashore Traditional

### About the artist

Doctor in musicology, conductor and composer.

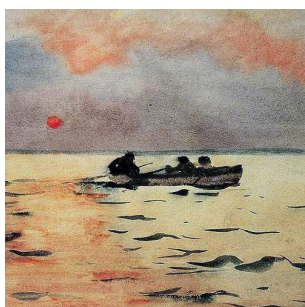
Compositions and arrangements from all eras, in all styles or musical genres and for any instrument or vocal training.

**Qualification:** PhD Musicology

**Associate:** SACEM - IPI code of the artist : 342990

**Artist page :** <https://www.free-scores.com/Download-PDF-Sheet-Music-bernard-dewagtere.htm>

### About the piece



**Title:** Michael Row the Boat Ashore  
**Composer:** Traditional  
**Arranger:** Dewagtere, Bernard  
**Copyright:** Copyright © Bernard Dewagtere  
**Publisher:** Dewagtere, Bernard  
**Instrumentation:** Mandolin, Piano  
**Style:** Gospel

### Bernard Dewagtere on [free-scores.com](https://www.free-scores.com)

#### LICENSE

This sheet music requires an authorization  
- for public performances  
- for use by teachers

**Buy this license at :**

<https://www.free-scores.com//license?p=atYfTP1Qld>



- listen to the audio
- share your interpretation
- comment
- pay the licence
- contact the artist

Prohibited distribution on other website.

# Michael Row the Boat Ashore

Afro-American spiritual (1867)

Arr. : Bernard Dewagtere

$\text{♩} = 70$

Mandolin



Piano

The first system shows the introduction. The Mandolin part (top) has a treble clef, a key signature of one flat (Bb), and a common time signature (C). It features a few notes in the final measure, with a fretboard diagram below showing a triplet of three notes on the 3rd fret and an open string (0). The Piano part (bottom) is in a grand staff with treble and bass clefs, featuring a complex accompaniment with chords and moving lines in both hands.

Mand.



Pno.

The second system continues the piece. The Mandolin part (top) has a treble clef and a key signature of one flat. It features a melodic line with a 5th fret fingerings indicated above the notes. The fretboard diagram below shows fingerings: 3, 0, 3, 5, 3, 0, 3, 5, 3, 0, 3. The Piano part (bottom) is in a grand staff, providing a harmonic accompaniment with chords and moving lines.

Mand.



Pno.

The third system concludes the piece. The Mandolin part (top) has a treble clef and a key signature of one flat. It features a melodic line with a 9th fret fingerings indicated above the notes. The fretboard diagram below shows fingerings: 3, 0, 1, 0, 5, 3, 5, 0, 5, 3, 3, 0. The Piano part (bottom) is in a grand staff, providing a harmonic accompaniment with chords and moving lines.

©2019Dewagtere

Michael Row the Boat Ashore

Mand. Pno.

Musical score for Mandolin and Piano, measures 13-16. The Mandolin part (top) is in treble clef with a key signature of one flat and a 2/3 time signature. It features a melody with a first ending bracket over measures 13-14 and a second ending bracket over measures 15-16. The Piano part (bottom) is in grand staff with a key signature of one flat. It provides harmonic accompaniment with chords and single notes. Measure numbers 13 and 17 are indicated at the start of the first and second systems respectively.

Mand. Pno.

Musical score for Mandolin and Piano, measures 17-20. The Mandolin part (top) continues the melody from the previous system. The Piano part (bottom) continues the accompaniment. Measure numbers 17 and 21 are indicated at the start of the first and second systems respectively.

Mand. Pno.

Musical score for Mandolin and Piano, measures 21-24. The Mandolin part (top) features a first ending bracket over measures 21-22 and a second ending bracket over measures 23-24. The Piano part (bottom) continues the accompaniment. Measure numbers 21 and 25 are indicated at the start of the first and second systems respectively.