



Bernard Dewagtere

France, SIN LE NOBLE

Michael Row the Boat Ashore Traditional

About the artist

Doctor in musicology, conductor and composer.

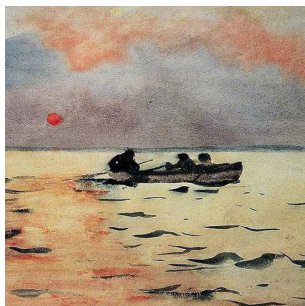
Compositions and arrangements from all eras, in all styles or musical genres and for any instrument or vocal training.

Qualification: PhD Musicology

Associate: SACEM - IPI code of the artist : 342990

Artist page : <https://www.free-scores.com/Download-PDF-Sheet-Music-bernard-dewagtere.htm>

About the piece



Title: Michael Row the Boat Ashore

Composer: Traditional

Arranger: Dewagtere, Bernard

Copyright: Copyright © Bernard Dewagtere

Publisher: Dewagtere, Bernard

Instrumentation: Organ solo

Style: Gospel

Bernard Dewagtere on [free-scores.com](https://www.free-scores.com)

LICENSE

This sheet music requires an authorization
- for public performances
- for use by teachers

Buy this license at :

<https://www.free-scores.com//license?p=afosj1lfOs>



- listen to the audio
- share your interpretation
- comment
- pay the licence
- contact the artist

Prohibited distribution on other website.

Michael Row the Boat Ashore

Afro-American spiritual (1867)

Arr. : Bernard Dewagtere

$\text{♩} = 70$

Organ

Ped.

5

9

Michael Row the Boat Ashore

2
13

2.

This system contains measures 2 through 13. It features a treble clef with a key signature of one sharp (F#) and a 3/4 time signature. The melody in the treble clef starts with a quarter note G4, followed by quarter notes A4, B4, and C5. A first ending bracket covers measures 10-11, and a second ending bracket covers measures 12-13. The piano accompaniment in the right hand consists of chords and eighth notes, while the left hand provides a simple bass line with quarter notes.

17

This system contains measures 17 through 20. The treble clef melody continues with a half note G4, followed by quarter notes A4, B4, and C5. The piano accompaniment in the right hand features a more active eighth-note pattern, while the left hand continues with a steady quarter-note bass line.

21

1. 2.

This system contains measures 21 through 24. It features a first ending bracket for measures 21-22 and a second ending bracket for measures 23-24. The treble clef melody concludes with a half note G4. The piano accompaniment in the right hand includes a final chord with a fermata, and the left hand ends with a half note G2.