



Bernard Dewagtere

France, SIN LE NOBLE

The Coventry Carol Traditional

About the artist

Doctor in musicology, conductor and composer.

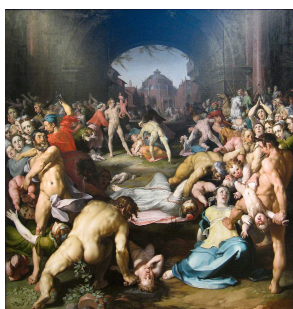
Compositions and arrangements from all eras, in all styles or musical genres and for any instrument or vocal training.

Qualification: PhD Musicology

Associate: SACEM - IPI code of the artist : 342990

Artist page : <https://www.free-scores.com/Download-PDF-Sheet-Music-bernard-dewagtere.htm>

About the piece



Title: The Coventry Carol
Composer: Traditional
Arranger: Dewagtere, Bernard
Copyright: Copyright © Bernard Dewagtere
Publisher: Dewagtere, Bernard
Instrumentation: Recorder (S. or T.), piano (or organ)
Style: Christmas - Carols

Bernard Dewagtere on [free-scores.com](https://www.free-scores.com)

LICENSE

This sheet music requires an authorization
- for public performances
- for use by teachers

Buy this license at :

<https://www.free-scores.com//license?p=aylgoTZ9u9>



- listen to the audio
- share your interpretation
- comment
- pay the licence
- contact the artist

Prohibited distribution on other website.

The Coventry Carol

Lullay, Thou little tiny Child

Old English Carol (16th Century)

Arr. : Bernard Dewagtere

Flûte à bec Soprano

Piano

pp

This system contains the first six measures of the score. The Soprano Flute part consists of six whole rests. The Piano accompaniment begins with a piano (*pp*) dynamic. The right hand plays chords in the treble clef, and the left hand plays a simple bass line in the bass clef. The key signature has two flats and the time signature is 3/4.

Fl. à b. S.

Pno

7

This system contains measures 7 through 12. The Bass Flute part has six whole rests. The Piano accompaniment continues with chords and a bass line. A piano (*p*) dynamic marking appears in measure 12. The right hand has some melodic movement in measure 12.

Fl. à b. S.

Pno

13

p

This system contains measures 13 through 18. The Bass Flute part has six whole rests. The Piano accompaniment continues with chords and a bass line. A piano (*p*) dynamic marking is present in measure 14. The right hand has some melodic movement in measure 14.

The Coventry Carol

2
19

Fl. à b. S.

Pno

25

Fl. à b. S.

Pno

31

Fl. à b. S.

Pno

mp

37

Fl. à b. S.

Pno

The Coventry Carol

43 *mf*

Fl. à b. S.

Pno

49

Fl. à b. S.

Pno

55

Fl. à b. S.

Pno

61 *f*

Fl. à b. S.

Pno

The Coventry Carol

4
67

Fl. à b. S.

Pno

73

Fl. à b. S.

Pno

79

Fl. à b. S.

Pno

85

Fl. à b. S.

Pno

rit.