



# Ilio Volante

Italia, Rome

## ALGORITMI

### About the artist

Ilio Volante, Italian composer of classical and jazz music. Born in Italy on 15 of May 1964, he was still a teenager when he started his music studies saxophone showing from the very beginning a particular predisposition towards music composition and Jazz music. At the age of 19 he won the audition for the Italian National Army Band stationed in Rome. He served it for 10 years under the direction of Col. Marino Bartoloni. After which, he played in the Grenadiers of Sardinias Band Rome and the Shape International Band the official NATO Band stationed in Mons Belgium. In this last post, he held the position of 1st Tenor Saxophone , for three years. Additionally he helped the Director, MSG Allen Wittig, in composing original arrangements for the Big Band. So far, in his career , he has written more than 200 tunes for several music formations. Starting from the Marching/Symphonic/Big Bands repertoire to the Symphonic Orchestra and Decimini/Quintetti/Trii, etc.

**Associate:** SIAE - IPI code of the artist : 78546

**Artist page :** <https://www.free-scores.com/Download-PDF-Sheet-Music-ilio-volante.htm>

### About the piece



**Title:** ALGORITMI  
**Composer:** Volante, Ilio  
**Arranger:** Volante, Ilio  
**Copyright:** Copyright © Ilio Volante  
**Publisher:** Volante, Ilio  
**Instrumentation:** Synthesizer and Orchestra  
**Style:** Modern classical

### Ilio Volante on [free-scores.com](https://www.free-scores.com)



This work is not Public Domain. You must contact the artist for any use outside the private area.



- listen to the audio
- share your interpretation
- comment
- contact the artist

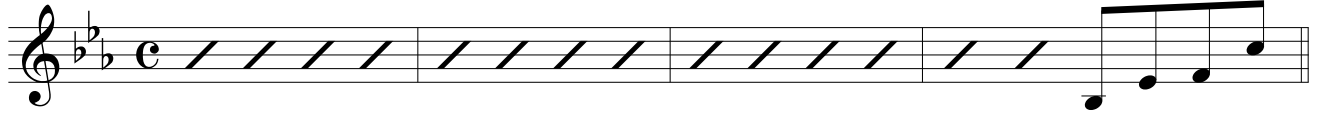
TREMBLE CLEF

# ALGORITMI

by ILIO VOLANTE

♩ = 130

Cm



E♭/B♭



A♭maj7

Fm7

B♭sus4

B♭



Cm

E♭/B♭



A♭maj7

Fm7

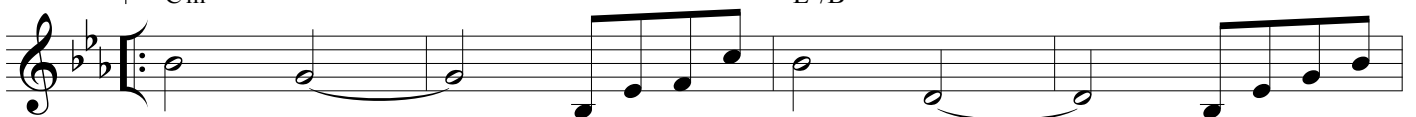
B♭

E♭



♩ Cm

E♭/B♭



A♭maj7

Fm7

B♭sus4

B♭



ALGORITMI - Ilio Volante - TREMBLE CLEF

Cm

1.  
Eb/Bb

Abmaj7 Fm7 Bb Eb Gm/D

2.  
Eb/Bb

Abmaj7 Fm7 Bb

Db Ab Bb Eb Ab Bb

Eb Ab Bb Eb Ab Bb

Cm

D.S. alla Coda

CODA

Ad Lib & Fade Out

Eb Ab Bb Eb Ab Bb