



**Page artiste :** [https://www.free-scores.com/partitions\\_gratuites\\_farrierpete.htm](https://www.free-scores.com/partitions_gratuites_farrierpete.htm)

### A propos de la pièce

**Titre :**  
**Droit d'auteur :** © CC-BY-NC-SA 4.0  
**Style :** Jazz

sur [free-scores.com](https://www.free-scores.com)

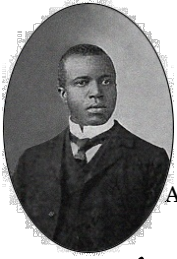


Cette partition ne fait pas partie du domaine public. Merci de contacter l'artiste pour toute utilisation hors du cadre privé.

**Interdiction de diffusion sur d'autres sites Web.**



- partager votre interprétation
- commenter la partition
- contacter l'artiste



# Great Crush Collision (1896)

March, dedicated to the Missouri-Kansas-Texas Railway

by **Scott Joplin**,

King of Ragtime, Composer of "The Entertainer" and "Maple Leaf Rag"

Arr. 2021-05-10 FarrierPete

Introduction.

$\text{♩} = 124$

Piano

**Tempo di Marcia**

5 Pno.

10 Pno.

15 Pno.

20 Pno.

26 Pno.

Piano score system 1 (measures 31-35). The system is marked with a first ending bracket above measures 34 and 35. The notation includes treble and bass staves with various chords and melodic lines, including slurs and accents.

Piano score system 2 (measures 36-40). The system continues the musical piece with complex chordal textures and melodic fragments in both hands.

Piano score system 3 (measures 41-45). This system features more intricate chordal structures and melodic lines, with some notes marked with slurs and accents.

Piano score system 4 (measures 46-50). The system shows a continuation of the complex harmonic and melodic material, with various chord voicings and melodic patterns.

Piano score system 5 (measures 51-55). This system includes a first ending bracket above measures 51 and 52, and a second ending bracket above measures 53 and 54. The notation is dense with chords and melodic lines.

Piano score system 6 (measures 56-60). The system concludes the page with further complex chordal and melodic development, including slurs and accents.

63

Pno.

68

Pno.

74

Pno.

*mp* *ff*

The noise of the trains while running at the rate of sixty miles per hour, Whistling for the crossing,

79

Pno.

The noise of the trains

82

Pno.

The collision (two additional measures inserted.)

*fff* *mf*

Whistle before the collision

87

Pno.

93

Pno.

99

Pno.

# The Great Railway Crash at Crush, Texas, 1896

see: [https://en.wikipedia.org/wiki/Crash\\_at\\_Crush](https://en.wikipedia.org/wiki/Crash_at_Crush) Pictures: Wikimedia Commons

