

TWENTY FOUR MINUETS,

In Three Parts

Compos'd by the most Eminent Masters Viz.

ARNE, ABEL, COCCHI, BATES, CLAGGETT,

As Perform'd at the Borough Assembly,

Selected and properly Adapted for Dancing by

M^R: S E T T R E E

Master of the Ceremonies,

To be had of M^r: Settree, at his Academy Southampton Buildings Chancery Lane
And at M^r: Rutherfords Music Warehouse S^t: Martins Court, Leicester Square

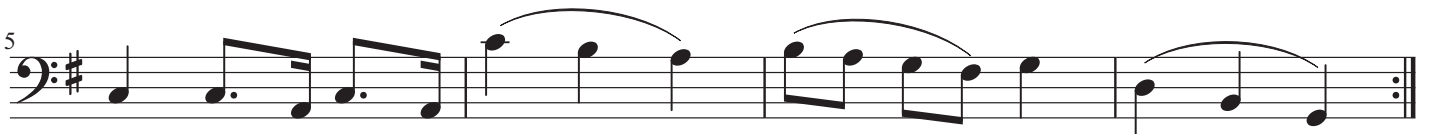
Transposed For Solo Cello



J.S.H.

The New Borough Assembly Minuet

Settree



Conway's Minuet

Settree



Fine

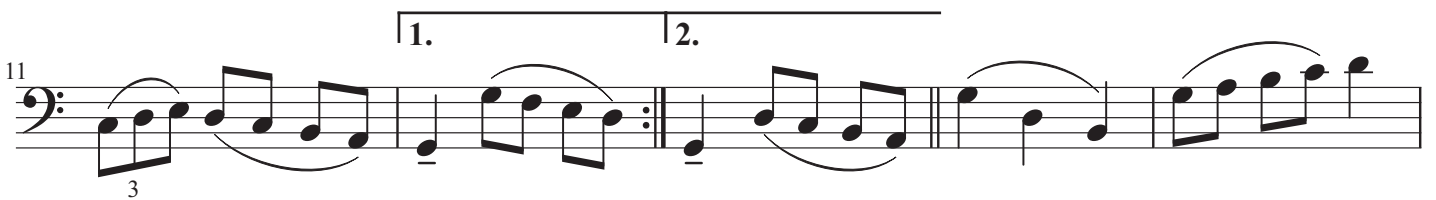
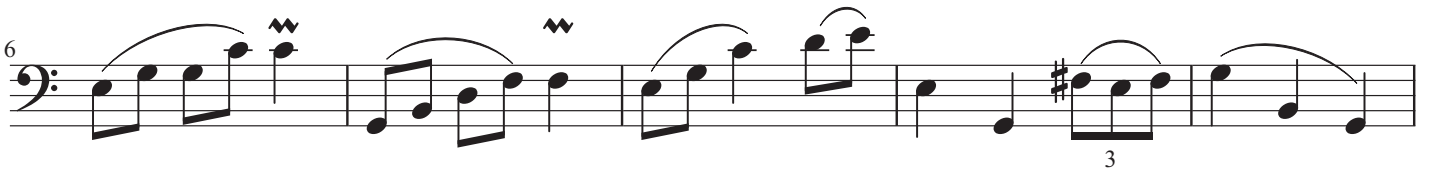


D.C. al Fine



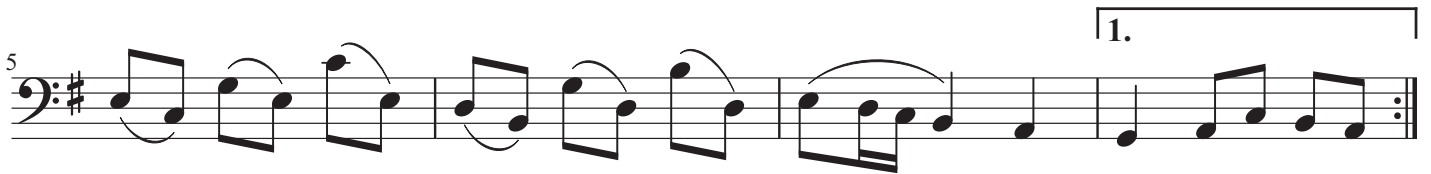
General Johnstons Minuet

Settree



The Duke of Bedford's Minuet

Settree



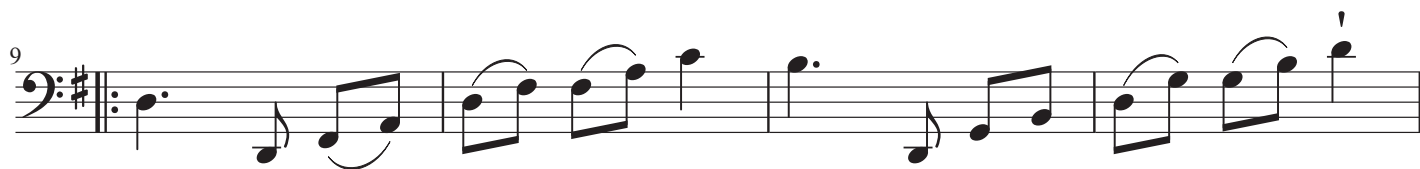
The Duke of Richmond's Minuet

Settree



Lord Tufton's Minuet

Settree



hold on repeat
end

Miss Pigotts Minuet

Settree



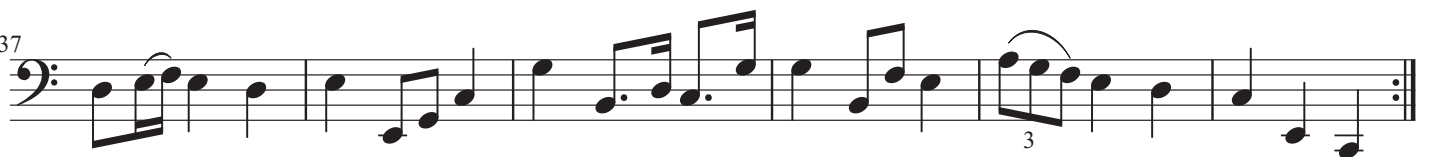
Lady North's Minuet

Settree



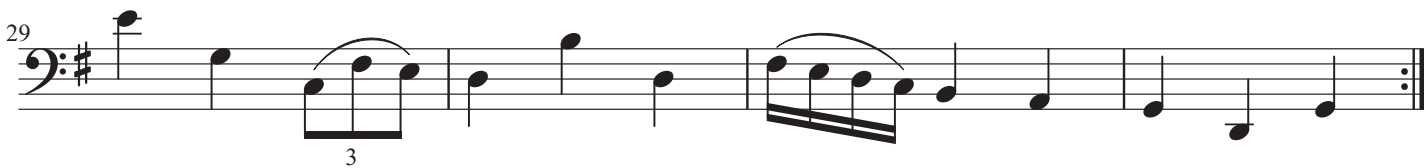
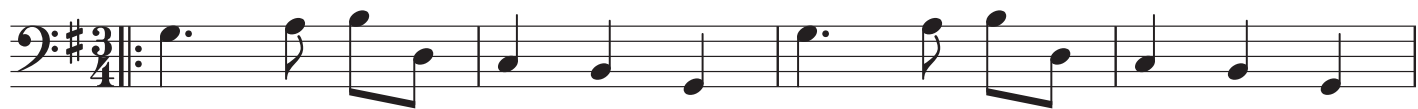
Mr Sharps Minuet

Settree



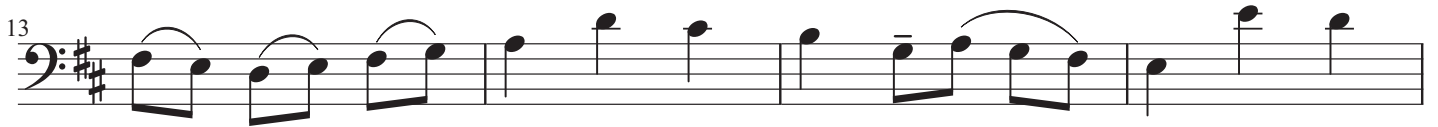
Miss Akerman's Minuet

Settree



Miss Robert's Minuet

Settree



Miss Reed's Minuet

Settree



Miss Lucy Howard's Minuet

Settree



Miss Pott's Minuet

Settree

First staff of music, starting with a treble clef, a key signature of two sharps (F# and C#), and a 3/4 time signature. The melody begins with a quarter note G4, followed by a dotted quarter note A4, and an eighth note B4. The next measure contains a quarter note C5, a quarter note B4, and a quarter note A4. The final measure of the staff features a triplet of eighth notes: G4, F#4, and E4.

Second staff of music, starting with a treble clef, a key signature of two sharps, and a 3/4 time signature. The melody begins with a quarter note G4, followed by a dotted quarter note A4, and an eighth note B4. The next measure contains a quarter note C5, a quarter note B4, and a quarter note A4. The final measure of the staff features a triplet of eighth notes: G4, F#4, and E4.

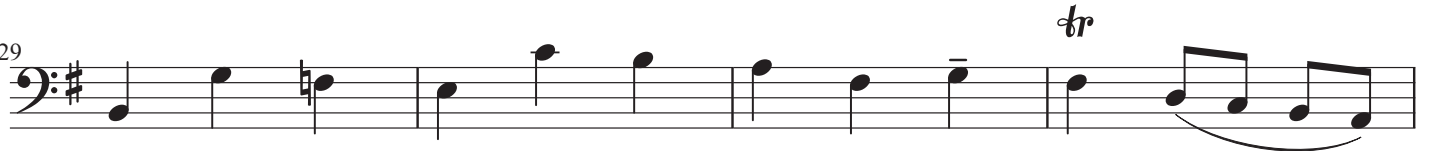
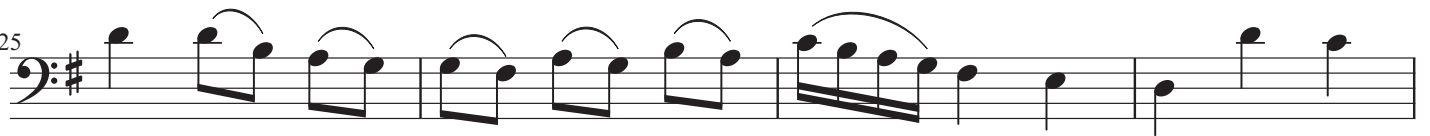
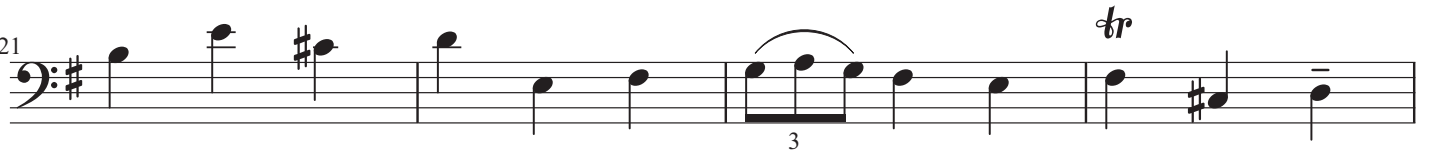
Third staff of music, starting with a treble clef, a key signature of two sharps, and a 3/4 time signature. The melody begins with a quarter note G4, followed by a dotted quarter note A4, and an eighth note B4. The next measure contains a quarter note C5, a quarter note B4, and a quarter note A4. The final measure of the staff features a triplet of eighth notes: G4, F#4, and E4.

Fourth staff of music, starting with a treble clef, a key signature of two sharps, and a 3/4 time signature. The melody begins with a quarter note G4, followed by a dotted quarter note A4, and an eighth note B4. The next measure contains a quarter note C5, a quarter note B4, and a quarter note A4. The final measure of the staff features a triplet of eighth notes: G4, F#4, and E4.

Fifth staff of music, starting with a treble clef, a key signature of two sharps, and a 3/4 time signature. The melody begins with a quarter note G4, followed by a dotted quarter note A4, and an eighth note B4. The next measure contains a quarter note C5, a quarter note B4, and a quarter note A4. The final measure of the staff features a triplet of eighth notes: G4, F#4, and E4.

Miss Fry's Minuet

Settree



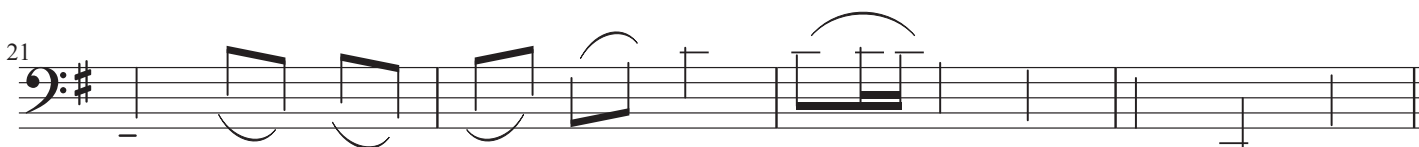
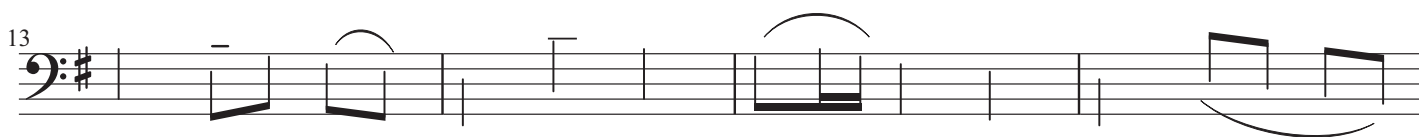
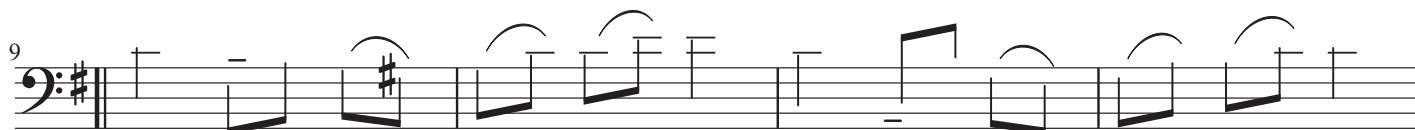
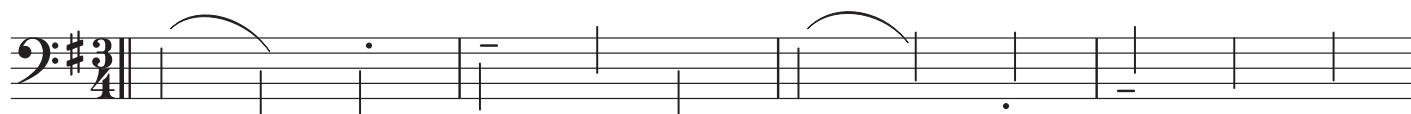
Miss Wathen's Minuet

Settree



Miss Walpole's Minuet

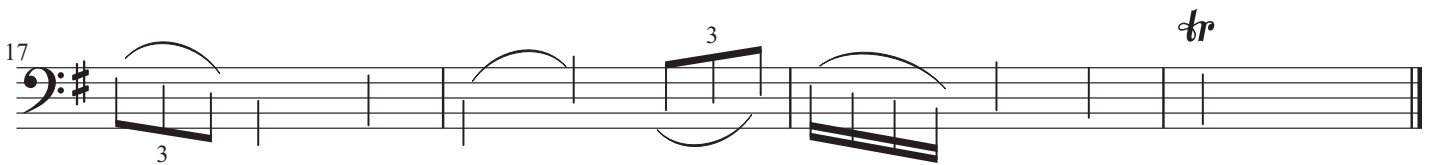
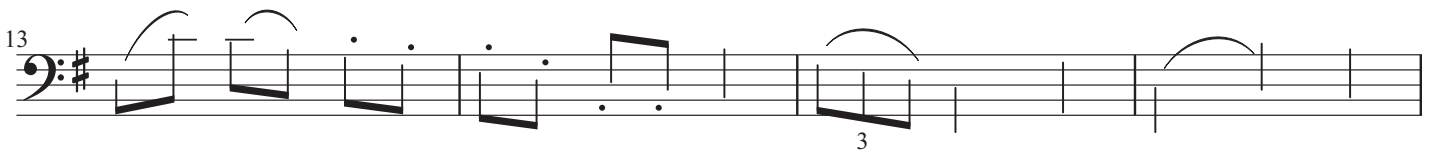
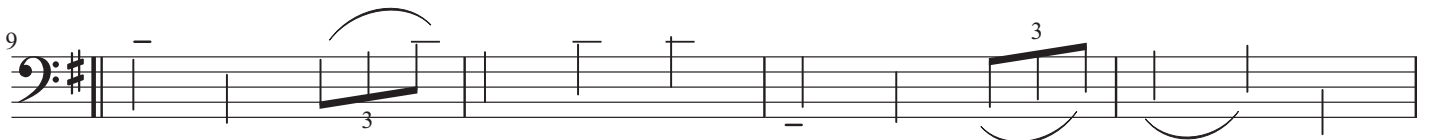
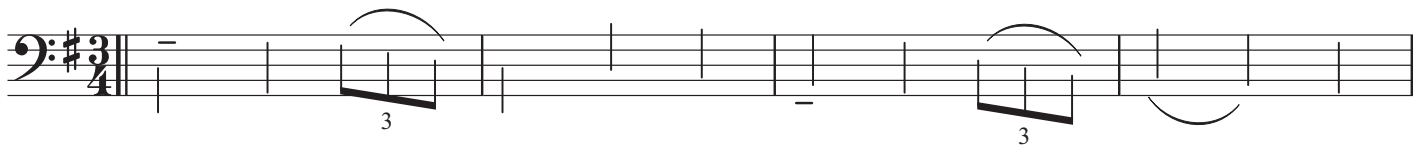
Settree



Hold & End
on Repeat

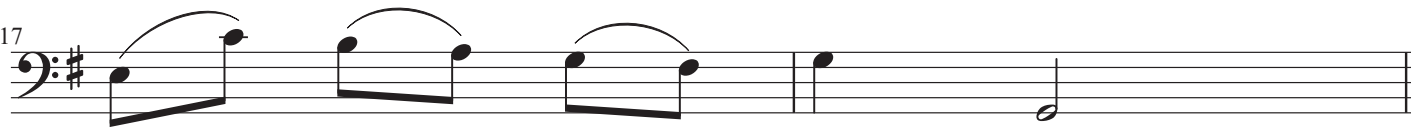
Miss Hart's Minuet

Settree



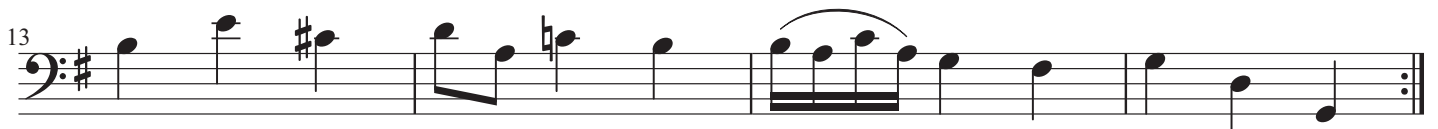
Miss Johnstons Minuet

Settree



Lord Petershams Minuet

Settree



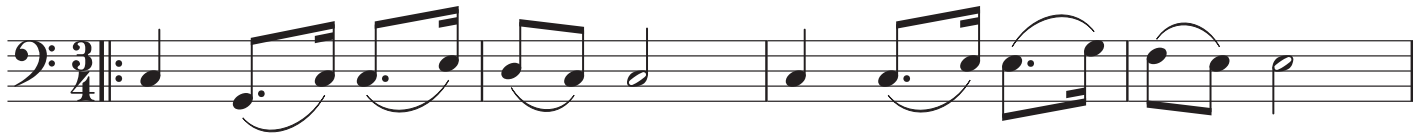
Minor

Settree



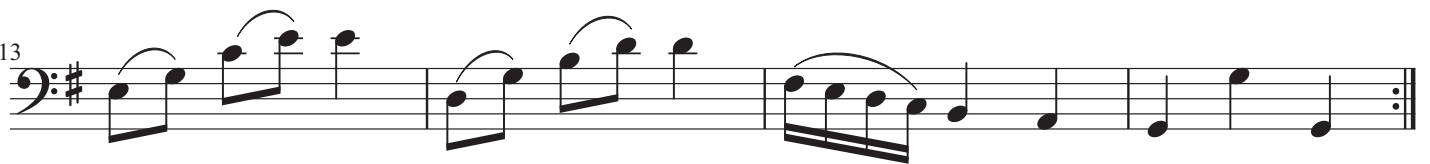
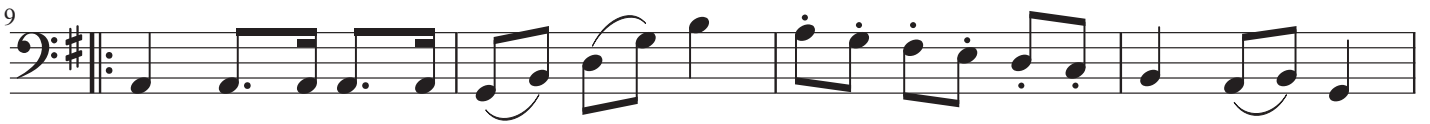
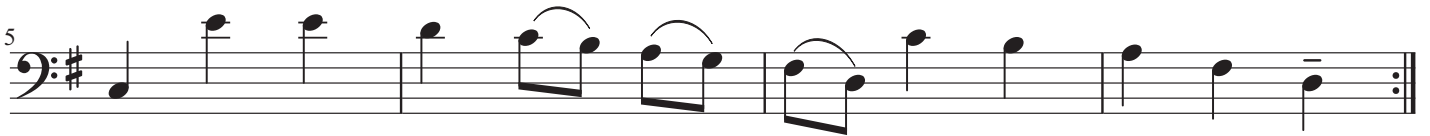
Mr Richard Dupuis Minuet

Settree



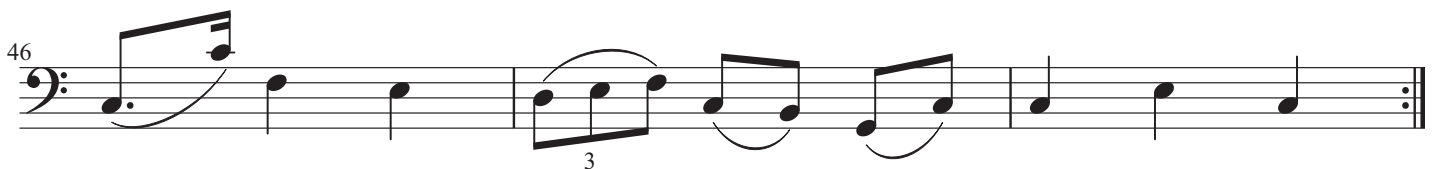
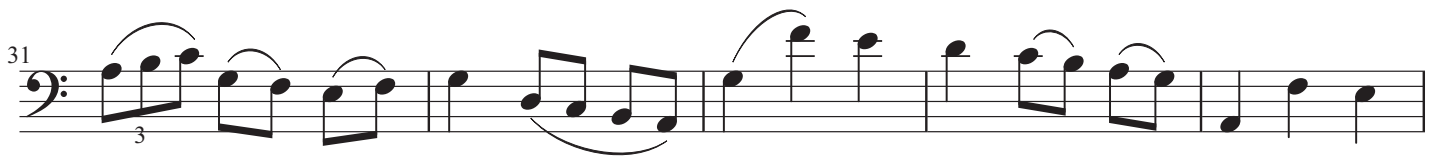
Lady Mawby's Minuet

Settree



Earl Percy's Minuet

Settree



Miss rr i s Minuet

Settree

