



Bernard Dewagtere

France, SIN LE NOBLE

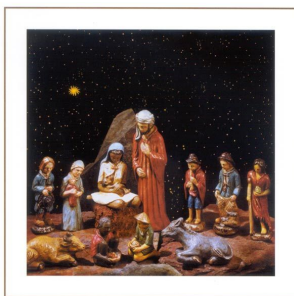
Minuit, chrétiens (Cantique de Noël) Adam, Adolphe Charles

A propos de l'artiste

Docteur en musicologie, chef d'orchestre et compositeur.
Compositions et arrangements de toutes époques, dans tous les styles ou genres musicaux et pour n'importe quelles formations instrumentales ou vocales.

Qualification : Docteur en Musicologie
Sociétaire : SACEM - Code IPI artiste : 342990
Page artiste : https://www.free-scores.com/partitions_gratuites_bernard-dewagtere.htm

A propos de la pièce



Titre : Minuit, chrétiens
[Cantique de Noël]
Compositeur : Adam, Adolphe Charles
Arrangeur : Dewagtere, Bernard
Droit d'auteur : Copyright © Dewagtere, Bernard
Instrumentation : Violoncelle, piano ou orgue
Style : Noël
Commentaire : « Minuit, chrétiens » est un cantique de Noël sur un texte écrit aux alentours de 1843 par Placide Cappeau et mis en musique par Adolphe Adam en 1847. À l'origine composé pour soprano et clavier (piano, orgue ou harmonium), Minuit, chrétiens est souvent chanté par un baryton ou un ténor solo accompagné à l'orgue lors de la deuxième messe de Noël célébrée traditionnellement le 24 décembre à minuit. De nombreuses transcriptions d... (la suite en ligne)

Bernard Dewagtere sur [free-scores.com](https://www.free-scores.com)

LICENCE

Cette partition nécessite une autorisation :

- pour les représentations publiques
- pour l'utilisation par les professeurs

S'acquies de cette licence sur :

<https://www.free-scores.com/licence-partition.php?partition=37830>



- écouter l'audio
- partager votre interprétation
- commenter la partition
- s'acquies de la licence
- contacter l'artiste

Interdiction de diffusion sur d'autres sites Web.

Minuit, chrétiens - O Holy Night

Cantique de Noël

Adolphe Adam (1847)

Arr. : Bernard Dewagtere

Cello

Piano

Measures 1-3 of the musical score. The Cello part is in the bass clef with a key signature of two sharps (D major) and a 12/8 time signature. It begins with a whole rest followed by a melodic line. The Piano part consists of two staves: the right hand in the treble clef and the left hand in the bass clef, both with the same key signature and time signature. The piano accompaniment features a rhythmic pattern of eighth and sixteenth notes.

4

Pno

Measures 4-6 of the musical score. The Cello part continues with its melodic line. The Piano part continues with its accompaniment. Measure 4 is marked with a '4' above the staff. The piano accompaniment maintains its rhythmic pattern.

7

Pno

Measures 7-9 of the musical score. The Cello part continues with its melodic line. The Piano part continues with its accompaniment. Measure 7 is marked with a '7' above the staff. The piano accompaniment maintains its rhythmic pattern.

Minuit, chrétiens - O Holy Night

2/10

Pno

13

Pno

16

Pno

Minuit, chrétiens - O Holy Night

19 3

Piano score for measures 19-22. The top staff is a single melodic line in bass clef with a long slur over measures 19-22. The bottom staff is a grand staff with a treble clef and a bass clef. The treble clef part consists of chords in the right hand and a rhythmic accompaniment in the left hand. The bass clef part continues the rhythmic accompaniment.

23

1.

Piano score for measures 23-26. The top staff is a single melodic line in bass clef with a long slur over measures 23-26. The bottom staff is a grand staff with a treble clef and a bass clef. The treble clef part consists of chords in the right hand and a rhythmic accompaniment in the left hand. The bass clef part continues the rhythmic accompaniment. A first ending bracket is shown above the treble clef part for measures 23-24.

27 *rit.*

Piano score for measures 27-30. The top staff is a single melodic line in bass clef with a long slur over measures 27-30. The bottom staff is a grand staff with a treble clef and a bass clef. The treble clef part consists of chords in the right hand and a rhythmic accompaniment in the left hand. The bass clef part continues the rhythmic accompaniment. A *rit.* (ritardando) marking is present above the top staff for measures 27-30.