



# Bernard Dewagtere

France, SIN LE NOBLE

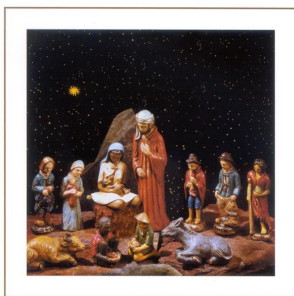
## Minuit, chrétiens (Cantique de Noël) Adam, Adolphe Charles

### A propos de l'artiste

Docteur en musicologie, chef d'orchestre et compositeur.  
Compositions et arrangements de toutes époques, dans tous les styles ou genres musicaux et pour n'importe quelles formations instrumentales ou vocales.

**Qualification :** Docteur en Musicologie  
**Sociétaire :** SACEM - Code IPI artiste : 342990  
**Page artiste :** [https://www.free-scores.com/partitions\\_gratuites\\_bernard-dewagtere.htm](https://www.free-scores.com/partitions_gratuites_bernard-dewagtere.htm)

### A propos de la pièce



**Titre :** Minuit, chrétiens  
[Cantique de Noël]  
**Compositeur :** Adam, Adolphe Charles  
**Arrangeur :** Dewagtere, Bernard  
**Droit d'auteur :** Copyright © Dewagtere, Bernard  
**Instrumentation :** Saxophone Ténor  
**Style :** Noël  
**Commentaire :** « Minuit, chrétiens » est un cantique de Noël sur un texte écrit aux alentours de 1843 par Placide Cappeau et mis en musique par Adolphe Adam en 1847. À l'origine composé pour soprano et clavier (piano, orgue ou harmonium), Minuit, chrétiens est souvent chanté par un baryton ou un ténor solo accompagné à l'orgue lors de la deuxième messe de Noël célébrée traditionnellement le 24 décembre à minuit. De nombreuses transcriptions d... (la suite en ligne)

### Bernard Dewagtere sur [free-scores.com](https://www.free-scores.com)

#### LICENCE

Cette partition nécessite une autorisation :

- pour les représentations publiques
- pour l'utilisation par les professeurs

**S'acquies de cette licence sur :**

<https://www.free-scores.com/licence-partition.php?partition=37842>



- écouter l'audio
- partager votre interprétation
- commenter la partition
- s'acquies de la licence
- contacter l'artiste

Interdiction de diffusion sur d'autres sites Web.

# Minuit, chrétiens - O Holy Night

*Cantique de Noël*

Adolphe Adam (1847)

Arr. : Bernard Dewagtere

Tenor  
Saxophone

Musical staff for Tenor Saxophone, measures 1-3. The staff is in treble clef with a key signature of one sharp (F#) and a time signature of 12/8. It begins with a whole rest, followed by a quarter rest, then a series of eighth and quarter notes with slurs and ties.

Cl. (Sib)

Musical staff for Clarinet in Bb, measures 4-6. The staff is in treble clef with a key signature of one sharp (F#) and a time signature of 12/8. It begins with a whole rest, followed by a quarter rest, then a series of eighth and quarter notes with slurs and ties.

Cl. (Sib)

Musical staff for Clarinet in Bb, measures 7-9. The staff is in treble clef with a key signature of one sharp (F#) and a time signature of 12/8. It begins with a whole rest, followed by a quarter rest, then a series of eighth and quarter notes with slurs and ties.

Cl. (Sib)

Musical staff for Clarinet in Bb, measures 10-12. The staff is in treble clef with a key signature of one sharp (F#) and a time signature of 12/8. It begins with a whole rest, followed by a quarter rest, then a series of eighth and quarter notes with slurs and ties.

Cl. (Sib)

Musical staff for Clarinet in Bb, measures 13-15. The staff is in treble clef with a key signature of one sharp (F#) and a time signature of 12/8. It begins with a whole rest, followed by a quarter rest, then a series of eighth and quarter notes with slurs and ties.

Cl. (Sib)

Musical staff for Clarinet in Bb, measures 16-18. The staff is in treble clef with a key signature of one sharp (F#) and a time signature of 12/8. It begins with a whole rest, followed by a quarter rest, then a series of eighth and quarter notes with slurs and ties.

Cl. (Sib)

Musical staff for Clarinet in Bb, measures 19-21. The staff is in treble clef with a key signature of one sharp (F#) and a time signature of 12/8. It begins with a whole rest, followed by a quarter rest, then a series of eighth and quarter notes with slurs and ties.

Cl. (Sib)

Musical staff for Clarinet in Bb, measures 22-26. The staff is in treble clef with a key signature of one sharp (F#) and a time signature of 12/8. It begins with a whole rest, followed by a quarter rest, then a series of eighth and quarter notes with slurs and ties.

Cl. (Sib)

Musical staff for Clarinet in Bb, measures 27-31. The staff is in treble clef with a key signature of one sharp (F#) and a time signature of 12/8. It begins with a whole rest, followed by a quarter rest, then a series of eighth and quarter notes with slurs and ties. The word "rit." is written above the staff in measure 30.