



Liana Alexandra

Roumanie, Bucarest

DEUX POEMES POUR SOPRANO ET PIANO (Texte: Eugène van Itterbeek - 1.) Poem for Madonna from Neamt; 2.) Poem for Romania)

A propos de l'artiste

<http://romania-on-line.net/whoswho/AlexandraLiana.htm>

Qualification : PROFESSEUR DOCTEUR EN COMPOSITION ET MUSICOLOGIE

Sociétaire : GEMA - Code IPI artiste : I-000402252-8

Page artiste : https://www.free-scores.com/partitions_gratuites_lianaalexandra.htm

A propos de la pièce



Titre : DEUX POEMES POUR SOPRANO ET PIANO
[Texte: Eugène van Itterbeek - 1.) Poem for Madonna from Neamt; 2.) Poem for Romania]

Compositeur : Alexandra, Liana

Droit d'auteur : Copyright © Liana Alexandra

Editeur : Alexandra, Liana

Instrumentation : Voix soprano et piano

Style : Classique moderne

Liana Alexandra sur [free-scores.com](https://www.free-scores.com)



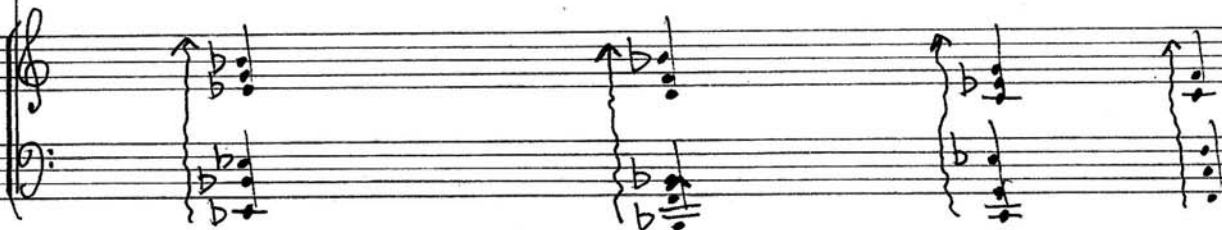
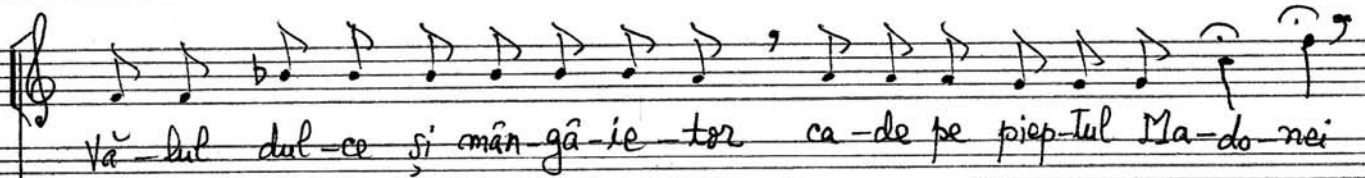
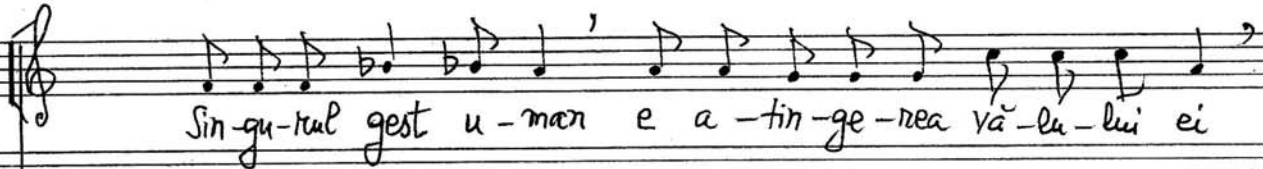
- écouter l'audio
- partager votre interprétation
- commenter la partition
- contacter l'artiste

POEM PENTRU MADONA DE LA HEAMT

versuri: Eugène Van Ifferbeek

muzică: Liana Alexandra

Copyright © Liana Alexandra
ISMN 000.72.96.94.37
000.72.96.95.35



do-ri să îmi po-ves-teas-că Toa-tă du-re — rea

Piano accompaniment for the first line of music, showing chords in both treble and bass staves.

ca-re-o as-teap-tă a pă-să-toa-re și tris-tă

Piano accompaniment for the second line of music, showing chords in both treble and bass staves.

Doar în ea mă re-cu-nosc în I-sus cel a-se-zat pe tron

Piano accompaniment for the third line of music, showing chords in both treble and bass staves.

Pe tro-nul bra-tu-lui ei me-vă-zut Doar în ea mă re-cu-nosc

The first system of the handwritten musical score consists of two staves. The upper staff is a vocal line in treble clef, containing a melody with various note values and rests. The lower staff is a piano accompaniment in bass clef, featuring a series of chords with upward-pointing stems. The lyrics are written below the vocal line.

Mă a-pro-pii de ea în o-chii ei îmi las

The second system of the handwritten musical score consists of two staves. The upper staff is a vocal line in treble clef, containing a melody with various note values and rests. The lower staff is a piano accompaniment in bass clef, featuring a series of chords with upward-pointing stems. The lyrics are written below the vocal line.

o-chii să se li-nis-teas-că de tot Mă a-pro-pii de ea

The third system of the handwritten musical score consists of two staves. The upper staff is a vocal line in treble clef, containing a melody with various note values and rests. The lower staff is a piano accompaniment in bass clef, featuring a series of chords with upward-pointing stems. The lyrics are written below the vocal line.

-4-

în-o-chi ei îmi las o-chi să se li-nis-teas-că

LARGO

Sin-gu-rul gest u-man E a-tin-ge-rea vă-lui ei

Mall... molto

vă-lul dul-ce măn-gă-ie-toz ca-de pe piep-tul Ma-do-nei

POEM PENTRU ROMANIA

versuri: Eugène Van Itterbeek

mușica: Liana Alexandra

Copyright © Liana Alexandra
ISMN 000.72.96.94.37
000.72.96.95.35

Soprano



Tu esti toa-tă nu-mai par-fum de

piano



mie-re su-ind din un-de-le ma-ti-na



le ce se-n-al-tă a-se-meri u-nei a-ripi de gi-

-gant an-co - ra-te în pă-mân - tul

This system contains the first two staves of music. The top staff is a vocal line in treble clef with lyrics: "-gant an-co - ra-te în pă-mân - tul". The bottom staff is a piano accompaniment in bass clef, featuring a steady eighth-note bass line and chords in the right hand.

tău Tu esti toa-tă nu-mai par -

This system contains the second two staves of music. The top staff is a vocal line in treble clef with lyrics: "tău Tu esti toa-tă nu-mai par -". The bottom staff is a piano accompaniment in bass clef, continuing the accompaniment from the first system.

fum de ruie - re ce ur-că din o-chii vi-su-lui

This system contains the third two staves of music. The top staff is a vocal line in treble clef with lyrics: "fum de ruie - re ce ur-că din o-chii vi-su-lui". The bottom staff is a piano accompaniment in bass clef, continuing the accompaniment.

plin de do- rin — ta Tu esti toa — ta mu — mai par — fum de

mie — re iar pe pă măn — tul mă — ta — sos si

tan — dru în flo — resc sal — că — mi albi si mu — fe —

Handwritten musical score for the first system. The vocal line (treble clef) contains the lyrics: "rîi nu-fe-rîi zâm-bind lu-mi-nî". The piano accompaniment consists of two staves (treble and bass clefs) with chords and moving lines.

Rubato

Handwritten musical score for the second system. The vocal line (treble clef) contains the lyrics: "și ad-cult cu Ba-co-vi-a ma-te-ri-a plân-gând". The piano accompaniment consists of two staves (treble and bass clefs) with chords and moving lines.

Handwritten musical score for the third system. The vocal line (treble clef) contains the lyrics: "și cân-te-ce-le și mur-mu-rul mo-no-ton". The piano accompaniment consists of two staves (treble and bass clefs) with chords and moving lines.

in-tre pe-re-ti ce-lesti pe ca-re Dom-nul le in-no-bi-

lea-za in-tu bi-se-rici pe ca-re sunt pic-ta-te

lu-mea Ve-chiul si No-ul Tes-ta-ment

Tu ești toa-tă nu-mai par-fum de mie — re

su — ind din un-de-le ma-ti — ra — le

ce se-nal-tă a-se-meni u-nei a-ripi de gi-gant

an-co - ra-te în pă-mân - tul tău

pe ca-re sunt pic-ta-te lu-mea ve-chiul

și No-ul Tes-ta-ment

Liana Alexandra
21 Sept. 1994