



# Mike Magatagan

États-Unis, SierraVista

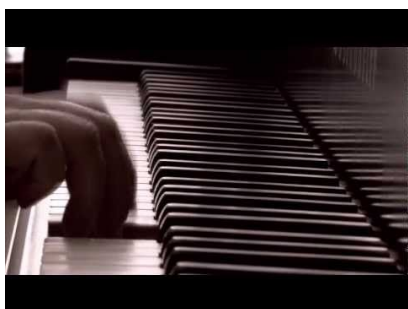
## "Solfeggietto" n ° 2 (H.220, W.117) pour piano acoustique Bach, Carl Philipp Emanuel

### A propos de l'artiste

Je suis ingénieur programmeur. À l'origine, je suis un geek, qui aime résoudre les problèmes. J'ai développé des logiciels les 25 dernières années, mais mon amour pour la musique a récemment été ravivé.

**Page artiste :** [https://www.free-scores.com/partitions\\_gratuites\\_magataganm.htm](https://www.free-scores.com/partitions_gratuites_magataganm.htm)

### A propos de la pièce



**Titre :** "Solfeggietto" n ° 2 (H.220, W.117) pour piano acoustique  
**Compositeur :** Bach, Carl Philipp Emanuel  
**Arrangeur :** Magatagan, Mike  
**Droit d'auteur :** Public Domain  
**Editeur :** Magatagan, Mike  
**Instrumentation :** Piano seul  
**Style :** Baroque  
**Commentaire :** Cette pièce est très court de la pièce la plus connue de Carl Philipp Emanuel Bach, l'un des trois des solfèges des écrits en 1770. Il est sans doute appris par tout pianiste en herbe, et est parfois utilisé dans les programmes d'examen (y compris les ABRSM). Solfeggietto signifie peu d'études. J'ai utilisé une édition domaine public apparemment édité par Hans von Bulow, et ont conservé ses doubléments d'octave. J'ai inclus les que... (la suite en ligne)

Mike Magatagan sur [free-scores.com](https://www.free-scores.com)



- écouter l'audio
- partager votre interprétation
- commenter la partition
- contacter l'artiste



# "Solfeggietto"

## No 2 in C Minor

C.P.E. Bach (H220, W117)

**Prestissimo** (♩ = ca. 120-200)

*mf*

5

7

9

Musical notation for measures 11 and 12. The piece is in B-flat major (two flats) and 3/4 time. Measure 11 features a treble clef with a quarter rest followed by eighth-note runs, and a bass clef with a quarter note. Measure 12 continues the treble clef melody with eighth-note runs and a quarter note, while the bass clef has a quarter note.

Musical notation for measures 13, 14, and 15. Measure 13 has a treble clef with eighth-note runs and a bass clef with a quarter note. Measure 14 has a treble clef with eighth-note runs and a bass clef with a quarter note. Measure 15 has a treble clef with eighth-note runs and a bass clef with a quarter note. Dynamics *p* and *f* are indicated.

Musical notation for measures 16, 17, and 18. Measure 16 has a treble clef with eighth-note runs and a bass clef with a quarter note. Measure 17 has a treble clef with eighth-note runs and a bass clef with a quarter note. Measure 18 has a treble clef with eighth-note runs and a bass clef with a quarter note. Dynamics *p* and *f* are indicated.

Musical notation for measures 19, 20, and 21. Measure 19 has a treble clef with eighth-note runs and a bass clef with a quarter note. Measure 20 has a treble clef with eighth-note runs and a bass clef with a quarter note. Measure 21 has a treble clef with eighth-note runs and a bass clef with a quarter note.

Musical notation for measures 22, 23, 24, and 25. Measure 22 has a treble clef with eighth-note runs and a bass clef with a quarter note. Measure 23 has a treble clef with eighth-note runs and a bass clef with a quarter note. Measure 24 has a treble clef with eighth-note runs and a bass clef with a quarter note. Measure 25 has a treble clef with eighth-note runs and a bass clef with a quarter note. Dynamics *f* and *p* are indicated. A fermata is present over the final note of measure 25.

26

*p* *f* *p* *f*

29

*p* *f*

31

33

*rit.*