



Bernard Giulivi

France

A propos de la pièce

Titre: Canons énigmatiques
Compositeur: Bach, Johann Sebastian
Instrumentation: Tout instrument
Style: Baroque

Bernard Giulivi sur [free-scores.com](http://www.free-scores.com)

http://www.free-scores.com/partitions_gratuites_bernard-giulivi.htm

- Contacter l'artiste
- Commenter cette partition
- Ajouter votre interprétation MP3
- Accès partition avec ce QR Code :



Cette partition ne fait pas partie du domaine public. Merci de contacter l'artiste pour toute utilisation hors du cadre privé.

CANONS DE J.S.BACH



Canone doppio sopr' il Soggetto.

Canone I
Canone II
Soggetto

Symbolon.
Christus Coronabit Crucigeras.
Lipſiæ. 2. 15. Octobr. 1747.

Domino Persejori
hircæ notulis comens,
dare se volebat
J. S. Bach

A handwritten musical score for a double canon. It features three staves: 'Canone I' (treble clef), 'Canone II' (alto clef), and 'Soggetto' (bass clef). The music is in G major and 3/4 time. Below the staves, there is a Latin inscription and a date: 'Lipſiæ. 2. 15. Octobr. 1747.' To the right, there is a dedication: 'Domino Persejori hircæ notulis comens, dare se volebat J. S. Bach'.

A piano accompaniment for the canon, showing the left and right hands. The music is in G major and 3/4 time. The right hand plays a rhythmic pattern of eighth and sixteenth notes, while the left hand provides a harmonic accompaniment. The score is marked with 'etc.' at the end of each line.

Two staves of musical notation, likely representing the subject and the canon. The top staff is in treble clef and the bottom staff is in bass clef. The music is in G major and 3/4 time. The watermark 'free-scores.com' is visible at the bottom.

Soggetto

clue for retrograde

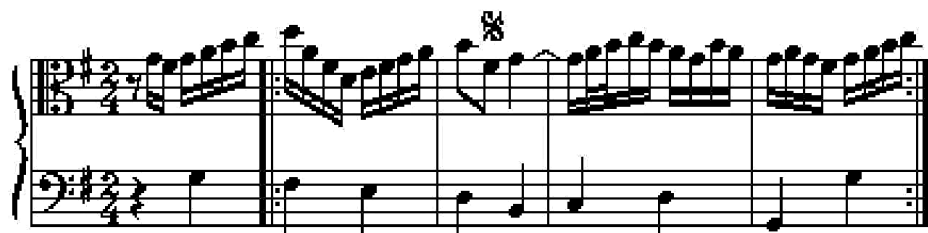


Soggetto (inverted)

clue for retrograde



clue for inversion



clue for inversion

