



# Mike Magatagan

États-Unis, SierraVista

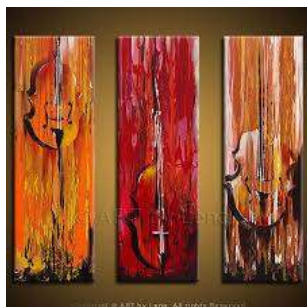
## Prelude & Fughetta in G Major for String Trio (BWV 902) Bach, Johann Sebastian

### A propos de l'artiste

Je suis ingénieur programmeur. À l'origine, je suis un geek, qui aime résoudre les problèmes. J'ai développé des logiciels les 25 dernières années, mais mon amour pour la musique a récemment été ravivé.

**Page artiste :** [https://www.free-scores.com/partitions\\_gratuites\\_magataganm.htm](https://www.free-scores.com/partitions_gratuites_magataganm.htm)

### A propos de la pièce



**Titre :** Prelude & Fughetta in G Major for String Trio [BWV 902]  
**Compositeur :** Bach, Johann Sebastian  
**Arrangeur :** Magatagan, Mike  
**Droit d'auteur :** Public Domain  
**Editeur :** Magatagan, Mike  
**Instrumentation :** Trio à cordes  
**Style :** Baroque

Mike Magatagan sur [free-scores.com](https://www.free-scores.com)



- écouter l'audio
- partager votre interprétation
- commenter la partition
- contacter l'artiste



# Prelude & Fughetta

*in G Major*

J. S. Bach (BWV 902)

Interpretation for String Trio by Mike Magatagan 2017

I. Prelude (♩ = 60)

Violin *mf*

Viola *mf*

Cello *mf*

5

Vi

Va

Vc

8

Vi

Va

Vc

12

Vi

Va

Vc

15

Vi

Va

Vc

18



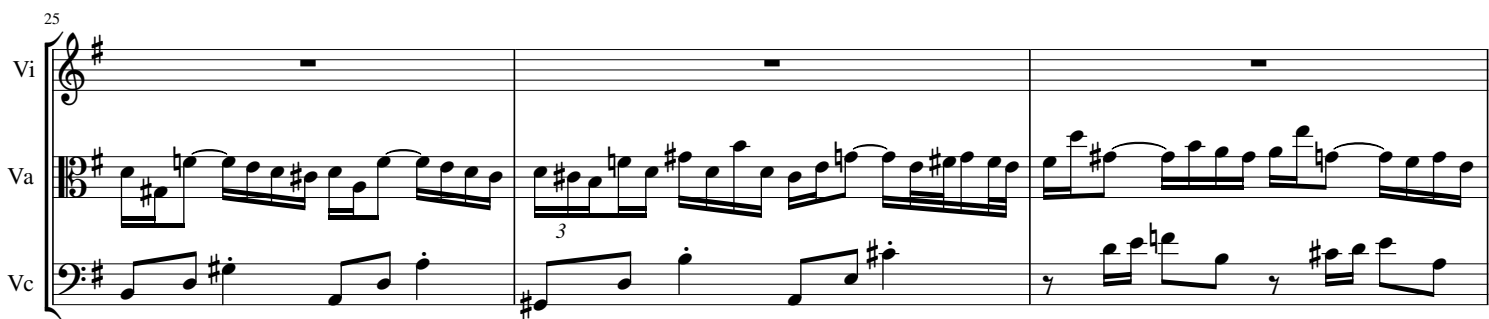
Vi  
Va  
Vc

21



Vi  
Va  
Vc

25



Vi  
Va  
Vc

28



Vi  
Va  
Vc

32



Vi  
Va  
Vc

34

Vi  
Va  
Vc

This system contains measures 34, 35, and 36. The Violin (Vi) part features a complex, fast-moving melodic line with many sixteenth notes and some grace notes. The Viola (Va) part provides a steady accompaniment with eighth notes. The Violoncello (Vc) part has a more active role, with eighth notes and some sixteenth-note passages.

37

Vi  
Va  
Vc

This system contains measures 37 and 38. The Violin (Vi) part continues with its intricate melodic line. The Viola (Va) part has a more relaxed feel with some rests and eighth-note patterns. The Violoncello (Vc) part maintains a consistent eighth-note accompaniment.

39

Vi  
Va  
Vc

This system contains measures 39 and 40. The Violin (Vi) part has a very busy texture with rapid sixteenth-note runs. The Viola (Va) part is mostly silent in these measures. The Violoncello (Vc) part has a melodic line with some sixteenth-note passages.

41

Vi  
Va  
Vc

This system contains measures 41, 42, 43, and 44. The Violin (Vi) part has a more melodic and lyrical quality with some slurs. The Viola (Va) part has a steady eighth-note accompaniment. The Violoncello (Vc) part has a simple, rhythmic accompaniment.

45

Vi  
Va  
Vc

This system contains measures 45, 46, 47, and 48. The Violin (Vi) part has a melodic line with some slurs. The Viola (Va) part has a steady eighth-note accompaniment. The Violoncello (Vc) part has a simple, rhythmic accompaniment.

48

Vi  
Va  
Vc

51

Vi  
Va  
Vc

54

Vi  
Va  
Vc

II. Fugue (♩ = 75)

Violin  
Viola  
Cello

9

Vi  
Va  
Vc

*mf*

17

Vi  
Va  
Vc

This system contains measures 17 through 25. The Violin part (Vi) features a melodic line with eighth and sixteenth notes. The Viola part (Va) provides harmonic support with similar rhythmic patterns. The Violoncello part (Vc) plays a steady eighth-note accompaniment. The key signature is one sharp (F#) and the time signature is 3/4.

26

Vi  
Va  
Vc

This system contains measures 26 through 34. The Violin part (Vi) continues its melodic development. The Viola part (Va) has some rests in the first few measures. The Violoncello part (Vc) maintains its eighth-note accompaniment. The key signature is one sharp (F#) and the time signature is 3/4.

35

Vi  
Va  
Vc

This system contains measures 35 through 43. The Violin part (Vi) has a more active melodic line. The Viola part (Va) plays a more complex rhythmic pattern. The Violoncello part (Vc) has some rests in the latter half of the system. The key signature is one sharp (F#) and the time signature is 3/4.

44

Vi  
Va  
Vc

This system contains measures 44 through 52. The Violin part (Vi) has a melodic line with some rests. The Viola part (Va) plays a rhythmic accompaniment. The Violoncello part (Vc) has a melodic line with eighth notes. The key signature is one sharp (F#) and the time signature is 3/4.

53

Vi  
Va  
Vc

*rit.*

This system contains measures 53 through 61, ending with a double bar line. The Violin part (Vi) has a melodic line. The Viola part (Va) has a melodic line. The Violoncello part (Vc) has a rhythmic accompaniment. The key signature is one sharp (F#) and the time signature is 3/4. The word *rit.* is written above the Violin staff.