



MAURIZIO MACHELLA

Arrangeur, Interprete, Editeur

Italie

A propos de l'artiste

Famous musician and organist, known throughout the world.

Italian publisher, researcher and organist.

The I.net Greatest Organ Music Resource in the World.

The most complete private library of music scores for organ and harpsichord.

Published rare scores of organ and harpsichord music with Armelin Musica of Padova (www.armelin.it) and with the sheet music world center: "Free-scores.com".

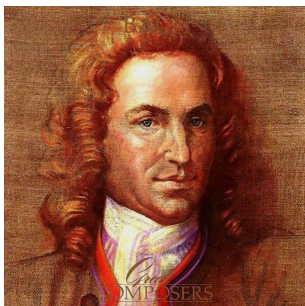
More than 1,8 million downloads!

Remember ... all this work, if you can, make me an offer on Paypal.

Thanks!

Site Internet: <http://www.facebook.com/home.php?ref=home#/profile.php?id=100000082741780&ref=name>

A propos de la pièce



Titre: WIR CHRISTENLEUT (the Neumeister Collection)
[BWV 1090]
Compositeur: Bach, Johann Sebastian
Licence: Public domain
Editeur: MACHELLA, MAURIZIO
Instrumentation: Orgue seul
Style: Classique

MAURIZIO MACHELLA sur free-scores.com

http://www.free-scores.com/partitions_gratuites_giordaniello.htm

- Contacter l'artiste
- Commenter cette partition
- Ajouter votre interprétation MP3
- Accès partition et écoute audio avec ce QR Code :



Wir Christenleut

a cura di Maurizio Machella

J. S. BACH
BWV 1090



Musical notation for the first two measures of the piece. The score is in G minor (one flat) and common time (C). The right hand starts with a whole rest, followed by a half note G4, and then a series of eighth notes: A4, Bb4, C5, Bb4, A4. The left hand begins with a rhythmic pattern of eighth notes: G3, A3, Bb3, C4, Bb3, A3, G3.

3

Musical notation for measures 3 and 4. The right hand continues with eighth notes: G4, A4, Bb4, C5, Bb4, A4, G4. The left hand continues with eighth notes: G3, A3, Bb3, C4, Bb3, A3, G3.

5

Musical notation for measures 5 and 6. The right hand continues with eighth notes: G4, A4, Bb4, C5, Bb4, A4, G4. The left hand continues with eighth notes: G3, A3, Bb3, C4, Bb3, A3, G3.

7

Musical notation for measures 7 and 8. The right hand continues with eighth notes: G4, A4, Bb4, C5, Bb4, A4, G4. The left hand continues with eighth notes: G3, A3, Bb3, C4, Bb3, A3, G3.

9

Musical notation for measures 9 and 10. The right hand continues with eighth notes: G4, A4, Bb4, C5, Bb4, A4, G4. The left hand continues with eighth notes: G3, A3, Bb3, C4, Bb3, A3, G3.

11

Musical notation for measures 11 and 12. The system consists of a grand staff with a treble clef on the upper staff and a bass clef on the lower staff. The key signature has one flat (B-flat). Measure 11 features a melodic line in the treble clef with eighth and sixteenth notes, and a bass line with a similar rhythmic pattern. Measure 12 continues the melodic development in the treble clef.

13

Musical notation for measures 13 and 14. The system consists of a grand staff with a treble clef on the upper staff and a bass clef on the lower staff. The key signature has one flat (B-flat). Measure 13 shows a melodic line in the treble clef with eighth notes and a bass line with a steady eighth-note accompaniment. Measure 14 continues the melodic line in the treble clef.

15

Musical notation for measures 15 and 16. The system consists of a grand staff with a treble clef on the upper staff and a bass clef on the lower staff. The key signature has one flat (B-flat). Measure 15 features a melodic line in the treble clef with eighth notes and a bass line with a steady eighth-note accompaniment. Measure 16 continues the melodic line in the treble clef.

17

Musical notation for measures 17 and 18. The system consists of a grand staff with a treble clef on the upper staff and a bass clef on the lower staff. The key signature has one flat (B-flat). Measure 17 shows a melodic line in the treble clef with eighth notes and a bass line with a steady eighth-note accompaniment. Measure 18 continues the melodic line in the treble clef.

19

Musical notation for measures 19 and 20. The system consists of a grand staff with a treble clef on the upper staff and a bass clef on the lower staff. The key signature has one flat (B-flat). Measure 19 features a melodic line in the treble clef with eighth notes and a bass line with a steady eighth-note accompaniment. Measure 20 continues the melodic line in the treble clef.

21

Musical notation for measures 21 and 22. The system consists of a grand staff with a treble clef on the upper staff and a bass clef on the lower staff. The key signature has one flat (B-flat). Measure 21 shows a melodic line in the treble clef with eighth notes and a bass line with a steady eighth-note accompaniment. Measure 22 continues the melodic line in the treble clef.

23

Measures 23-25 of a piano piece. The music is in G minor (one flat) and 3/4 time. Measure 23 features a treble clef with a quarter rest followed by a quarter note G4, and a bass clef with a quarter rest followed by a quarter note G2. Measure 24 has a treble clef with a quarter note G4, a quarter note A4, and a quarter note Bb4, and a bass clef with a quarter note G2, a quarter note A2, and a quarter note Bb2. Measure 25 has a treble clef with a quarter note G4, a quarter note A4, and a quarter note Bb4, and a bass clef with a quarter note G2, a quarter note A2, and a quarter note Bb2.

26

Measures 26-27 of a piano piece. The music is in G minor (one flat) and 3/4 time. Measure 26 has a treble clef with a quarter note G4, a quarter note A4, and a quarter note Bb4, and a bass clef with a quarter note G2, a quarter note A2, and a quarter note Bb2. Measure 27 has a treble clef with a quarter note G4, a quarter note A4, and a quarter note Bb4, and a bass clef with a quarter note G2, a quarter note A2, and a quarter note Bb2.

28

Measures 28-29 of a piano piece. The music is in G minor (one flat) and 3/4 time. Measure 28 has a treble clef with a quarter note G4, a quarter note A4, and a quarter note Bb4, and a bass clef with a quarter note G2, a quarter note A2, and a quarter note Bb2. Measure 29 has a treble clef with a quarter note G4, a quarter note A4, and a quarter note Bb4, and a bass clef with a quarter note G2, a quarter note A2, and a quarter note Bb2.

30

Measures 30-32 of a piano piece. The music is in G minor (one flat) and 3/4 time. Measure 30 has a treble clef with a quarter note G4, a quarter note A4, and a quarter note Bb4, and a bass clef with a quarter note G2, a quarter note A2, and a quarter note Bb2. Measure 31 has a treble clef with a quarter note G4, a quarter note A4, and a quarter note Bb4, and a bass clef with a quarter note G2, a quarter note A2, and a quarter note Bb2. Measure 32 has a treble clef with a quarter note G4, a quarter note A4, and a quarter note Bb4, and a bass clef with a quarter note G2, a quarter note A2, and a quarter note Bb2.

33

Measures 33-35 of a piano piece. The music is in G minor (one flat) and 3/4 time. Measure 33 has a treble clef with a quarter note G4, a quarter note A4, and a quarter note Bb4, and a bass clef with a quarter note G2, a quarter note A2, and a quarter note Bb2. Measure 34 has a treble clef with a quarter note G4, a quarter note A4, and a quarter note Bb4, and a bass clef with a quarter note G2, a quarter note A2, and a quarter note Bb2. Measure 35 has a treble clef with a quarter note G4, a quarter note A4, and a quarter note Bb4, and a bass clef with a quarter note G2, a quarter note A2, and a quarter note Bb2.

24.

Dir Christen Taut

J. Seb. Bach

A handwritten musical score for the piece 'Dir Christen Taut' by J. Seb. Bach. The score is written in G minor (one flat) and 3/4 time. It features a treble clef and a bass clef. The music is in a simple, homophonic style with a clear melody in the treble and a supporting bass line. The notation includes various note values, rests, and accidentals.