



Romain Balola

Rép. Démocratique du Congo, Bukavu

Wewe uliye tumwa (Kyrié)

A propos de l'artiste

Artist musician composer, Romain BALOLA was born on February 11th, 1994, in Bukavu in Democratic Republic of Congo, graduated in Computer Management at the Catholic University of Bukavu. Passionate about music from an early age, he took his first steps in the Saint Ignace de Loyola choir at the age of 6. He learned music and music theory at the age of 16 in Kisima Ca Uzima choir, in which he is to this day the choir master. He will then do several training courses on musical theory, piano, vocal technique, musical orchestration, etc.

Composer of several songs, about 400 compositions to his credit including 1 album of 8 titles recorded in the studio for his choir Kisima Ca Uzima. It is thanks to the success of this album that he will make 2 albums for the Coordination of Catholic Convention Schools of Bukavu on the theme "School of Excellence". This marks a fluorescent start in his career as a composer. He composes several songs for Radio Maria (Bukavu, Goma, Kinshasa, ... (la suite en ligne)

Qualification : breveté

Page artiste : https://www.free-scores.com/partitions_gratuites_romainbalola.htm

A propos de la pièce

Titre : Wewe uliye tumwa
[Kyrié]
Compositeur : Balola, Romain
Arrangeur : Balola, Romain
Droit d'auteur : Copyright © Romain Balola

Romain Balola sur [free-scores.com](https://www.free-scores.com)



Cette partition ne fait pas partie du domaine public. Merci de contacter l'artiste pour toute utilisation hors du cadre privé.

Interdiction de diffusion sur d'autres sites Web.



- écouter l'audio
- partager votre interprétation
- commenter la partition
- contacter l'artiste

Kyrié

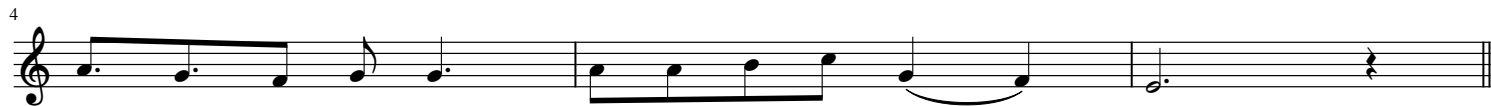
Missa ya huruma

Musique de Romain Balola

♩ = 70



1. We-we u-li - ye tu - mwa ku-wa po-nyawa-na-o tu - bu we-we u-li - ye tu - mwa ku-po-nya



wa - na - o tu - bu u - tu - hu - ru - mi - ye



Ky-ri - é E - le - i - son Kyri-é Ky-ri - é E - le - i -

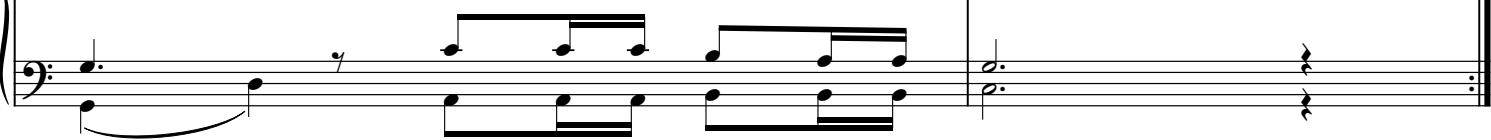
Ky - ri - é



Ky-ri - é E - le - i - son Ky-ri - é Ky-ri - é E - le - i -



son Ky - ri - é E - le - i - son



son Ky - ri - é E - le - i - son



2. We-we u-li - ye tu - mwa kuwa i - ta wa ko-se - fu we-we u-li - ye tu - mwa ku-wa-i -



ta wa - ko - se - fu u - tu - hu - ru - mi - ye



Chri - ste E - le - i - son Chri - ste

Chri - ste



Chri - ste E - le - i - son Chri - ste

Chri - ste E - le - i - son Chri - ste E - le - i - son

Chri - ste E - le - i - son Chri - ste E - le - i - son

3. We-we u-na-ye ka-a ku-u-me kwa Ba-ba we-weu-li-ye tu-mwa kwa-ku-tu

o - mbe - ya Bwana u - tu - hu - ru - mi - ye