



Faivre Christian

France, BISCHHEIM

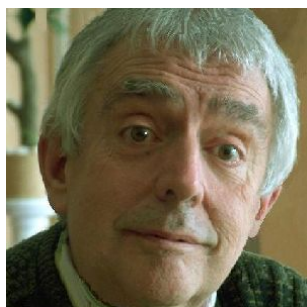
Première Symphonie (Mvt 1) Beethoven, Ludwig van

A propos de l'artiste

Compositeur en tous styles

Page artiste : https://www.free-scores.com/partitions_gratuites_christian-faivre.htm

A propos de la pièce



Titre : Première Symphonie (Mvt 1)
Compositeur : Beethoven, Ludwig van
Arrangeur : Christian, Faivre
Droit d'auteur : Copyright © Faivre Christian
Instrumentation : Piano seul
Style : Classique

Faivre Christian sur [free-scores.com](https://www.free-scores.com)



Cette partition ne fait pas partie du domaine public. Merci de contacter l'artiste pour toute utilisation hors du cadre privé.



- écouter l'audio
- partager votre interprétation
- commenter la partition
- contacter l'artiste

Première Symphonie

1 - Adagio molto - Allegro con brio

Ludwig van Beethoven

Adaptation : Christian Faivre © 2015

1 Adagio molto ♩ = 60

Piano

5

Piano

8

Piano

12 All^o con brio ♩ = 200

Piano

17

Piano

23

Piano

sf p f

tr

Acc.

29

Piano

f ff ff

Acc.

35

Piano

ff

Acc.

40

Piano

mf mf

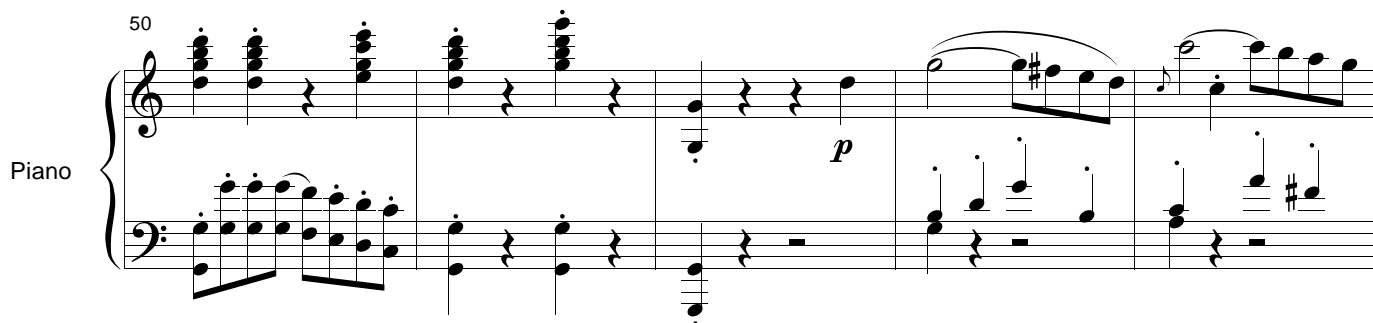
45

Piano

ff ff

50

Piano



p

55

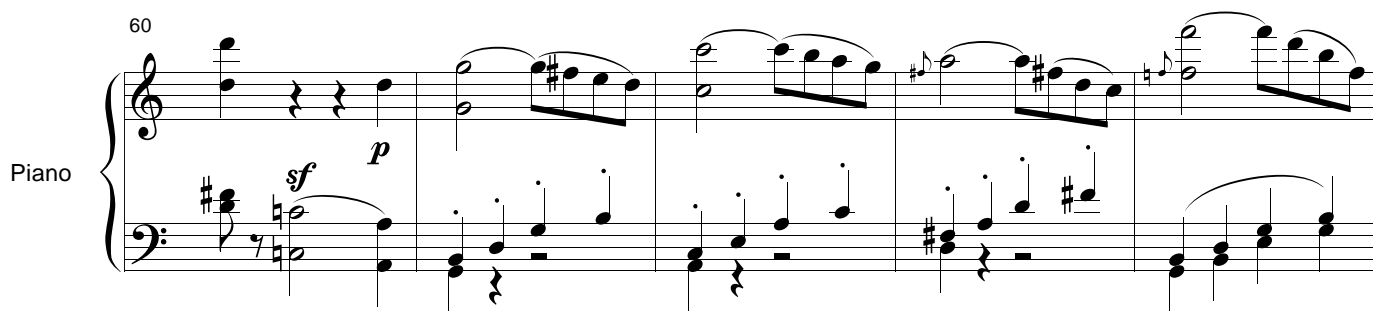
Piano



sf

60

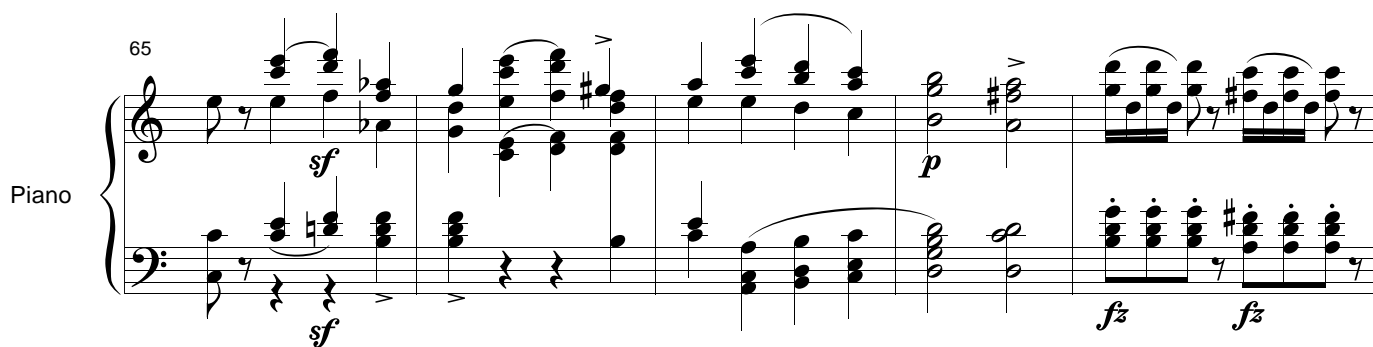
Piano



sf *p*

65

Piano



sf *p*

fz *fz*

70

Piano



fz *fz* *fz* *fz*

73

Piano

fz *ff*

77

Piano

Molto marcato al canto p

p *p*

82

Piano

p

86

Piano

ff *sf*

90

Piano

fz *fz* *fz* *fz* *f* *Ped.* *** *Ped.* ***

94

Piano

Musical score for piano, measures 94-96. The right hand features a complex rhythmic pattern with eighth and sixteenth notes, while the left hand provides a steady accompaniment of quarter notes. Dynamics include "Ped." and asterisks.

97

Piano

Musical score for piano, measures 97-99. The right hand continues with a rhythmic pattern, and the left hand has a more active role with some sixteenth notes. Dynamics include "Ped.", "sf", and asterisks.

100

Piano

Musical score for piano, measures 100-103. The right hand has a melodic line with slurs and accents, and the left hand has a rhythmic accompaniment. Dynamics include "f" and "p".

104

Piano

Musical score for piano, measures 104-107. The right hand has a melodic line with slurs and accents, and the left hand has a rhythmic accompaniment. Dynamics include "fp", "f", and "Dim.". A "8va" marking is present.

108

Piano

Musical score for piano, measures 108-111. The right hand has a melodic line with slurs and accents, and the left hand has a rhythmic accompaniment. Dynamics include "Loco" and "8va".

112

Piano

f
Red.
p
fz
p
p

116

Piano

Red.
sf
p
sf
p
p

120

Piano

Red.
sf
p
fz
p
p

124

Piano

f
f
8va - -

127

Piano

f
f
f
p
8va - -
Cresc.

130

Piano

f *f pp*

133

Piano

f *pp*

136

Piano

f *mf* *p*

139

Piano

p *f*

143

Piano

sf *mf*

147

Piano

sf

151

Piano

sf

155

Piano

sf

159

Piano

f

164

Piano

Red.

f

169

Piano

Ral. *Al tempo*

fz fz f

174

Piano

sf p fp

181

Piano

sf p mf

186

Piano

sf p

191

Piano

Rit. *Cresc. → 196*

p

196

Piano

196 197 198 199

200

Piano

200 201 202 203

204

Piano

204 205 206 207

208

Piano

208 209 210 211

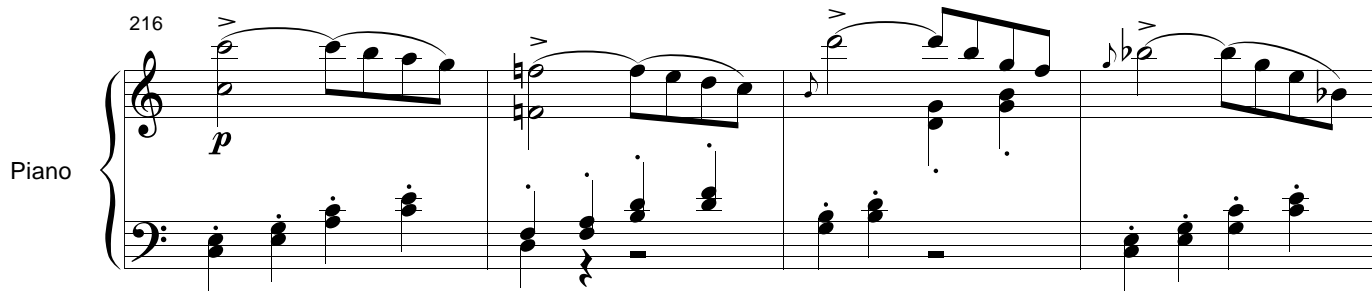
212

Piano

212 213 214 215

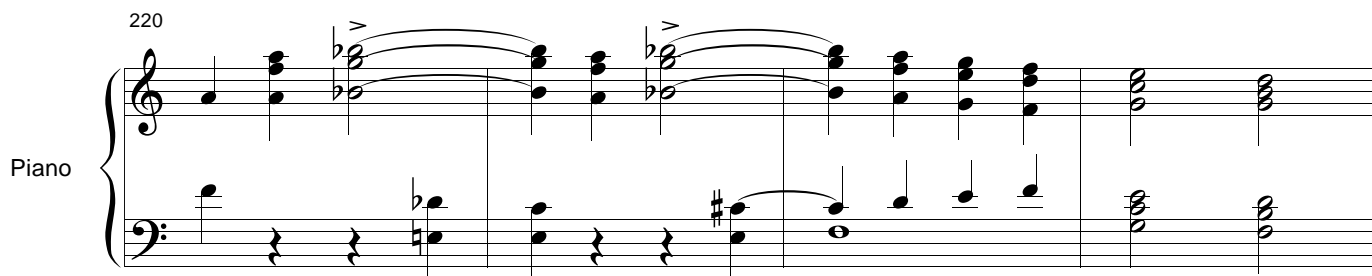
216

Piano



220

Piano



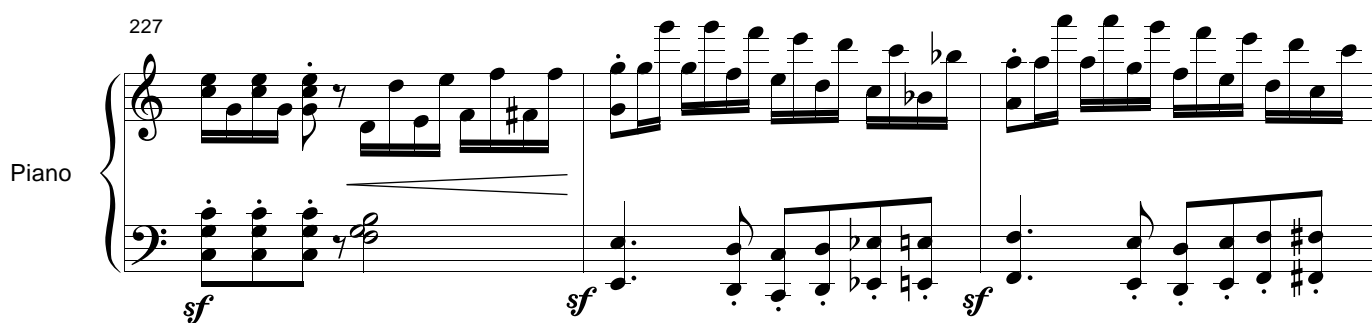
224

Piano



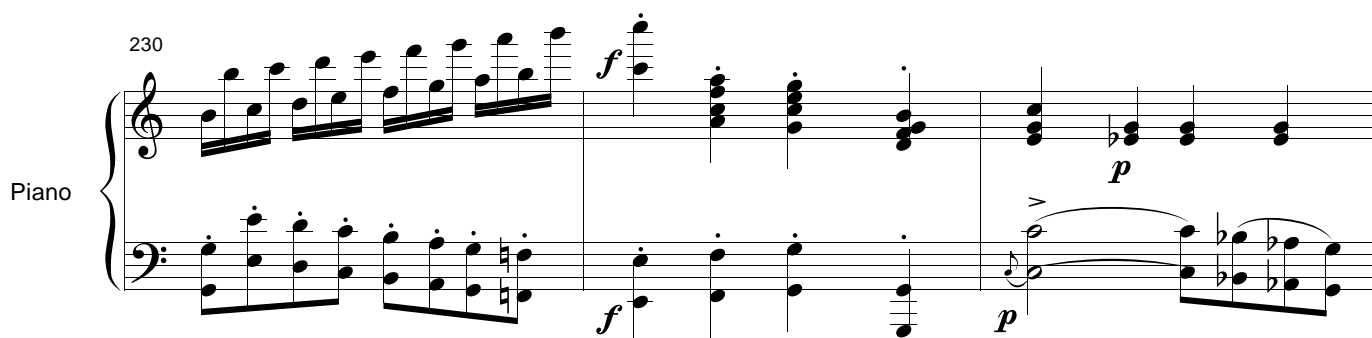
227

Piano



230

Piano



233 *Molto marcato al canto*

Piano

237

Piano

241

Piano

245

Piano

248

Piano

251

Piano

Ped. *Ped.* *sf* *sf*

254

Piano

sf *sf* *p* *f*

257

Piano

p *fz* *p* *fz*

260

Piano

p *sf* *p* *p*

264

Piano

sf *sf*

268

Piano

mf *p*

mf

272

Piano

f *ff*

276

Piano

sf

281

Piano

sf *Red.*

286

Piano

sf *Red.*

290

Piano

ff

294

Piano

299

Piano

304

Piano

309

Piano