



# Bernard Dewagtere

France, SIN LE NOBLE

## L'Arlésienne (Suite n°2) – 8. Farandole Bizet, Georges

### A propos de l'artiste

Docteur en musicologie, chef d'orchestre et compositeur.  
Compositions et arrangements de toutes époques, dans tous les styles ou genres musicaux et pour n'importe quelles formations instrumentales ou vocales.

**Qualification :** Docteur en Musicologie  
**Sociétaire :** SACEM - Code IPI artiste : 342990  
**Page artiste :** [https://www.free-scores.com/partitions\\_gratuites\\_bernard-dewagtere.htm](https://www.free-scores.com/partitions_gratuites_bernard-dewagtere.htm)

### A propos de la pièce



**Titre :** L'Arlésienne (Suite n°2) – 8. Farandole  
**Compositeur :** Bizet, Georges  
**Arrangeur :** Dewagtere, Bernard  
**Droit d'auteur :** Public Domain  
**Editeur :** Dewagtere, Bernard  
**Instrumentation :** Flûte seule  
**Style :** Romantique

### Bernard Dewagtere sur [free-scores.com](https://www.free-scores.com)

#### LICENCE

Cette partition nécessite une autorisation :  
- pour les représentations publiques  
- pour l'utilisation par les professeurs

**S'acquies de cette licence sur :**  
<https://www.free-scores.com/licence?p=abY9ugLwKE>



- écouter l'audio
- partager votre interprétation
- commenter la partition
- s'acquies de la licence
- contacter l'artiste

Interdiction de diffusion sur d'autres sites Web.

# L'Arlésienne (Suite n°2)

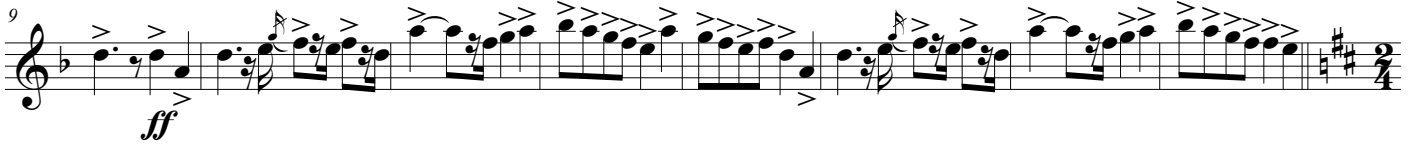
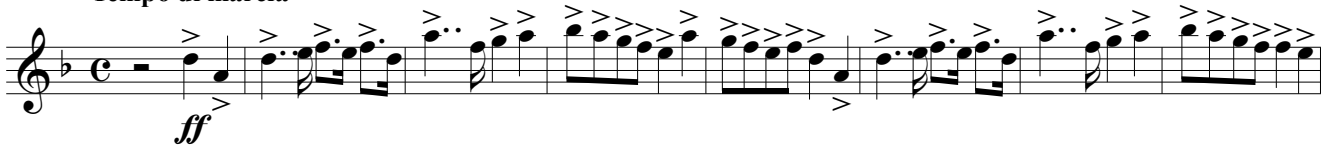
## 8. Farandole

Georges Bizet (1872)

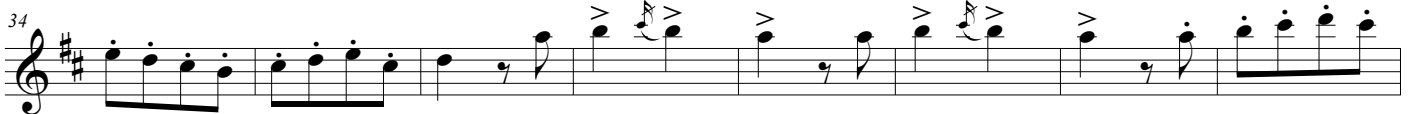
Transc. : Bernard Dewagtere

Tempo di marcia

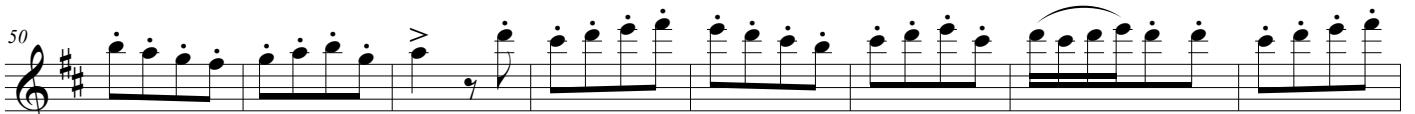
Flûte



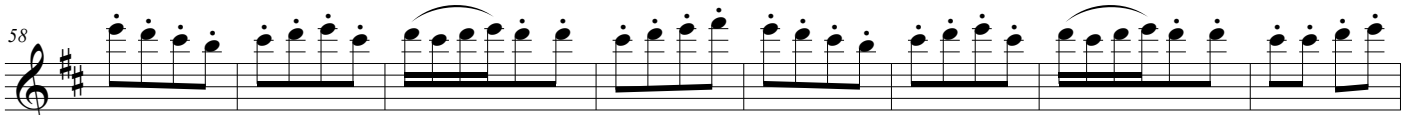
Allegro assai e deciso



*poco a poco cres- cen- do*



*sempre cres- cen- do*



*poco a poco cres- cen- do*



*sempre più cre- cen- do*



L'Arlesienne (Suite n°2)

2  
82

*ff*

90

*ff*

98

*p*

106

*p*

114

*ff*

122

*p*

130

*p*

138

*mf*

146

*poco a poco cres- cen- do*

154

*mf* *cres- - cen- - do*

L'Arlesienne (Suite n°2)

162 Musical staff 162-170: Treble clef, key signature of two sharps (F# and C#). The staff contains a series of eighth-note chords, each beamed together and marked with a slur. The dynamics are *molto* and *cresc.*

*molto cresc.*

170 Musical staff 170-178: Treble clef, key signature of two sharps. The staff contains eighth-note chords, each beamed together and marked with a slur. The dynamic is *fff*.

*fff*

178 Musical staff 178-186: Treble clef, key signature of two sharps. The staff contains eighth-note chords, each beamed together and marked with a slur.

186 Musical staff 186-194: Treble clef, key signature of two sharps. The staff contains eighth-note chords, each beamed together and marked with a slur. The dynamic is *fff*.

*fff*

194 Musical staff 194-202: Treble clef, key signature of two sharps. The staff contains eighth-note chords, each beamed together and marked with a slur.

202 Musical staff 202-210: Treble clef, key signature of two sharps. The staff contains eighth-note chords, each beamed together and marked with a slur. The dynamic is *fff*.

*fff*

210 Musical staff 210-218: Treble clef, key signature of two sharps. The staff contains eighth-note chords, each beamed together and marked with a slur.

218 Musical staff 218-226: Treble clef, key signature of two sharps. The staff contains eighth-note chords, each beamed together and marked with a slur. The dynamic is *ff*. A dashed line above the staff is labeled *8va*.

*ff*

226 Musical staff 226-234: Treble clef, key signature of two sharps. The staff contains eighth-note chords, each beamed together and marked with a slur. The dynamic is *fff*. A dashed line above the staff is labeled *(8va)*.

>

234 Musical staff 234-242: Treble clef, key signature of two sharps. The staff contains eighth-note chords, each beamed together and marked with a slur. The dynamic is *fff*.

*fff*

*fff fff fff fff fff fff fff*