



Bernard Dewagtere

France, SIN LE NOBLE

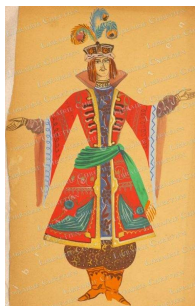
L'Arlésienne (Suite n°2) – 7. Menuet Bizet, Georges

A propos de l'artiste

Docteur en musicologie, chef d'orchestre et compositeur.
Compositions et arrangements de toutes époques, dans tous les styles ou genres musicaux et pour n'importe quelles formations instrumentales ou vocales.

Qualification : Docteur en Musicologie
Sociétaire : SACEM - Code IPI artiste : 342990
Page artiste : https://www.free-scores.com/partitions_gratuites_bernard-dewagtere.htm

A propos de la pièce



Titre : L'Arlésienne (Suite n°2) – 7. Menuet
Compositeur : Bizet, Georges
Arrangeur : Dewagtere, Bernard
Droit d'auteur : Copyright © Bernard Dewagtere
Editeur : Dewagtere, Bernard
Instrumentation : Hautbois, Piano (clavier)
Style : Romantique

Bernard Dewagtere sur [free-scores.com](https://www.free-scores.com)

LICENCE

Cette partition nécessite une autorisation :
- pour les représentations publiques
- pour l'utilisation par les professeurs

S'acquitter de cette licence sur :
<https://www.free-scores.com/licence?p=ai0KKH9fCW>



- écouter l'audio
- partager votre interprétation
- commenter la partition
- s'acquitter de la licence
- contacter l'artiste

Interdiction de diffusion sur d'autres sites Web.

L'Arlésienne (Suite n°2)

7. Menuet

Georges Bizet (1872)

Transc. : Bernard Dewagtere

Andantino quasi Allegretto ♩ = 74

Hautbois

Piano

dolce

pp leggiero

Hb.

pp

p

pp

p

Hb.

p

L'Arlésienne (Suite n°2)

Hb. ²₁₇

più f

17

più f

Hb. ²²

cres - - cen - - do sf

22

cres - - cen - - do sf

Hb. ²⁷

p *più f*

27

p *più f*

Hb. ³²

poco sf *p*

32

poco sf *p*

36

Hb.

This system covers measures 36 to 39. The Horn part (Hb.) features a melodic line with eighth-note patterns and some chromaticism. The Piano accompaniment consists of a steady eighth-note bass line in the left hand and chords in the right hand.

40

Hb.

This system covers measures 40 to 43. The Horn part continues with eighth-note patterns, ending with a dynamic change to *ff* and accents. The Piano accompaniment features a bass line and chords, with a dynamic change to *f* and *ff* in the right hand.

44

Hb.

This system covers measures 44 to 47. The Horn part has a melodic line with accents and a dynamic change to *ff*. The Piano accompaniment is more complex, with sixteenth-note patterns in the right hand and chords in the left hand.

48

Hb.

This system covers measures 48 to 51. The Horn part continues with eighth-note patterns and accents. The Piano accompaniment features sixteenth-note patterns in the right hand and chords in the left hand.

L'Arlésienne (Suite n°2)

4
52

Hb.

This system covers measures 4 to 52. The Horn part (Hb.) is in the treble clef with a key signature of two flats (B-flat and E-flat). It features a melodic line with eighth-note patterns and rests. The Piano accompaniment is in the grand staff (treble and bass clefs) and consists of dense chordal textures and rhythmic patterns. Dynamic markings include accents (>) and hairpins (> and <).

56

Hb.

This system covers measures 56 to 60. The Horn part continues with its melodic line. The Piano accompaniment maintains its complex texture. A dynamic marking of *p* (piano) is present at the end of the system.

60

Hb.

This system covers measures 60 to 64. The Horn part continues with its melodic line. The Piano accompaniment maintains its complex texture. A dynamic marking of *p* (piano) is present at the end of the system.

64

Hb.

This system covers measures 64 to 68. The Horn part continues with its melodic line. The Piano accompaniment maintains its complex texture. A dynamic marking of *p* (piano) is present at the end of the system.

Hb. 68

68

Hb. 72

72

più f

Hb. 77

77

poco sf *p*

Hb. 80

80

L'Arlésienne (Suite n°2)

6
83

Hb.

f

87

Hb.

pp *dolcissimo*

pp *dolcissimo*

90

Hb.

smor - - zan - - do

smor - - zan - - do

93

Hb.

smor - - zan - - do