



Bernard Dewagtere

France, SIN LE NOBLE

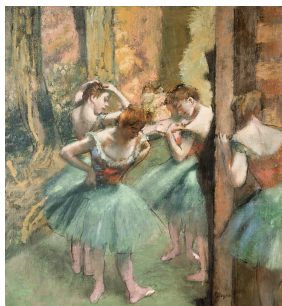
Menuet du "Quintette à cordes en Mi" (G.275 ; Op.11 No.5) Boccherini, Luigi

A propos de l'artiste

Docteur en musicologie, chef d'orchestre et compositeur.
Compositions et arrangements de toutes époques, dans tous les styles ou genres musicaux et pour n'importe quelles formations instrumentales ou vocales.

Qualification : Docteur en Musicologie
Sociétaire : SACEM - Code IPI artiste : 342990
Page artiste : https://www.free-scores.com/partitions_gratuites_bernard-dewagtere.htm

A propos de la pièce



Titre : Menuet du "Quintette à cordes en Mi"
[G.275 ; Op.11 No.5]
Compositeur : Boccherini, Luigi
Arrangeur : Dewagtere, Bernard
Droit d'auteur : Copyright © Bernard Dewagtere
Editeur : Dewagtere, Bernard
Instrumentation : Trompette en ut, piano ou orgue
Style : Classique

Bernard Dewagtere sur [free-scores.com](https://www.free-scores.com)

LICENCE

Cette partition nécessite une autorisation :

- pour les représentations publiques
- pour l'utilisation par les professeurs

S'acquies de cette licence sur :

<https://www.free-scores.com/licence?p=a7geX4zEOT>



- écouter l'audio
- partager votre interprétation
- commenter la partition
- s'acquies de la licence
- contacter l'artiste

Interdiction de diffusion sur d'autres sites Web.

Menuet du "Quintette à cordes en Mi"

G.275 ; Op.11 No.5

Luigi Boccherini (1743-1805)

Transc. : Bernard Dewagtere

Tempo di Menuetto con un poco di moto

Trompette en Ré

Piano

mp

p

This system contains the first four measures of the piece. The Trompette en Ré part (top staff) begins with a melodic phrase marked *mp*. The Piano part (bottom staves) features a rhythmic accompaniment of eighth notes, marked *p*. The key signature is one sharp (F#) and the time signature is 3/4.

Trp. (Ré)

Pno

This system contains measures 5 through 8. The Trp. (Ré) part (top staff) continues the melodic line with slurs and accents. The Piano part (bottom staves) maintains the eighth-note accompaniment. The key signature and time signature remain the same.

Trp. (Ré)

Pno

This system contains measures 9 through 12. The Trp. (Ré) part (top staff) includes a trill (tr) in measure 9 and two endings (1. and 2.) in measures 10-11. The Piano part (bottom staves) continues with the accompaniment. The key signature and time signature remain the same.

Menuet du "Quintette à cordes en Mi"

Trp. (Ré) ²/₁₀

Pno ¹⁰

Detailed description: This system covers measures 10 to 12. The Trp. (Ré) part is in a treble clef with a key signature of two sharps (F# and C#). It features a melodic line with eighth and quarter notes, including accents and a flat sign in measure 11. The Pno part consists of two staves. The right hand plays a rhythmic accompaniment of eighth notes with chords, while the left hand plays a simple bass line of quarter notes.

Trp. (Ré) ¹³

mf

Pno ¹³

mp

Detailed description: This system covers measures 13 to 15. The Trp. (Ré) part continues its melodic line, marked with a mezzo-forte (*mf*) dynamic. The Pno part has two staves. The right hand plays a more active eighth-note accompaniment, marked mezzo-piano (*mp*), while the left hand continues with a steady bass line.

Trp. (Ré) ¹⁶

Pno ¹⁶

Detailed description: This system covers measures 16 to 18. The Trp. (Ré) part features a melodic line with accents. The Pno part has two staves. The right hand plays a consistent eighth-note accompaniment, and the left hand continues with a steady bass line.

Trp. (Ré) ¹⁹

Pno ¹⁹

Detailed description: This system covers measures 19 to 21. The Trp. (Ré) part concludes with a melodic phrase that includes a first ending (marked '1.') and a second ending (marked '2.'). The Pno part has two staves. The right hand plays an eighth-note accompaniment, and the left hand continues with a steady bass line. The piece ends with a double bar line.