



Tony Wilkinson

Royaume-Uni, Wroxham

Paddy Whack (Characteristic March and Two-Step) Bodewalt Lampe, Jens

Page artiste : https://www.free-scores.com/partitions_gratuites_tonywilkinson.htm

A propos de la pièce

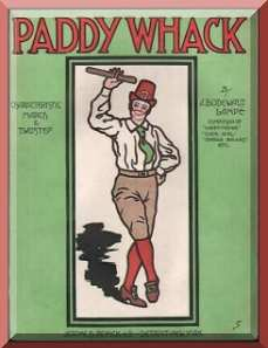


Titre : Paddy Whack
[Characteristic March and Two-Step]
Compositeur : Bodewalt Lampe, Jens
Arrangeur : Wilkinson, Tony
Droit d'auteur : Creative Commons Licence 4.0
Editeur : Wilkinson, Tony
Instrumentation : Piano seul
Style : March

Tony Wilkinson sur [free-scores.com](https://www.free-scores.com)



- écouter l'audio
- partager votre interprétation
- commenter la partition
- contacter l'artiste



Paddy Whack

Characteristic March and Two-Step

J. Bodewalt Lampe
1907

Marcato

1-4

ff

Whack

5-8

mf

Whack

9-12

Whack

13-16

Whack

Whack

17-20

mf

Whack

Transcription by Tony Wilkinson 2020.

26

Whack

31

Whack

ff

37 *8va second time*

42

48

1.

ff

2.

Whack

54

mf

Whack

This system contains measures 54 through 58. The music is in a key with one sharp (F#) and a 2/4 time signature. The right hand features a rhythmic melody with eighth and sixteenth notes, while the left hand provides a steady accompaniment of eighth notes. A dynamic marking of *mf* is present. The word "Whack" is written above the right hand in measure 58, which also contains a fermata over a chord.

59

Whack

This system contains measures 59 through 63. The musical texture continues with the same rhythmic patterns in both hands. The word "Whack" is written above the right hand in measure 63, which includes a fermata over a chord.

64

Whack

This system contains measures 64 through 69. The right hand melody continues with eighth and sixteenth notes. The word "Whack" is written above the right hand in measure 67, which includes a fermata over a chord.

70

mf Bag-pipe imitation.

This system contains measures 70 through 74. The time signature changes to 2/4. The right hand melody is characterized by a bag-pipe imitation, featuring a series of eighth notes with a distinct rhythmic pattern. The left hand accompaniment consists of eighth notes. A dynamic marking of *mf* is present. The text "Bag-pipe imitation." is written below the right hand.

75

This system contains measures 75 through 80. The bag-pipe imitation continues in the right hand, with the left hand providing a consistent eighth-note accompaniment.

81

This system contains measures 81 through 85. The right hand melody continues with eighth notes, and the left hand accompaniment remains consistent. The system concludes with a double bar line.

87 *Spirito*

f

91

96

101

pp *ff*

107

113