



# Daniel Buckley

Arrangeur, Compositeur, Editeur

États-Unis, Springfield

## A propos de l'artiste

Born 1987, I began playing guitar at the age of 14 and soon after I began composing within the Heavy Metal idiom. In 2006 I began my undergraduate studies in Music Business at Millikin University. In the fall of 2006 I began to compose piano and instrumental music; and my style has evolved to encompass a wide range from Heavy Metal to Impressionism and even 12 tone serialism. within these different styles I bring what I have emotionally into my work to make it my own.

Enjoy,

Danny Buckley

**Page artiste :** [https://www.free-scores.com/partitions\\_gratuites\\_dbuckley.htm](https://www.free-scores.com/partitions_gratuites_dbuckley.htm)

## A propos de la pièce



<b>Titre :</b>	Deadly Nightshade
<b>Compositeur :</b>	Buckley, Daniel
<b>Arrangeur :</b>	Buckley, Daniel
<b>Droit d'auteur :</b>	Copyright © Daniel Buckley
<b>Editeur :</b>	Buckley, Daniel
<b>Instrumentation :</b>	Violoncelle seul
<b>Style :</b>	Contemporain

Daniel Buckley sur [free-scores.com](https://www.free-scores.com)



- écouter l'audio
- partager votre interprétation
- commenter la partition
- contacter l'artiste

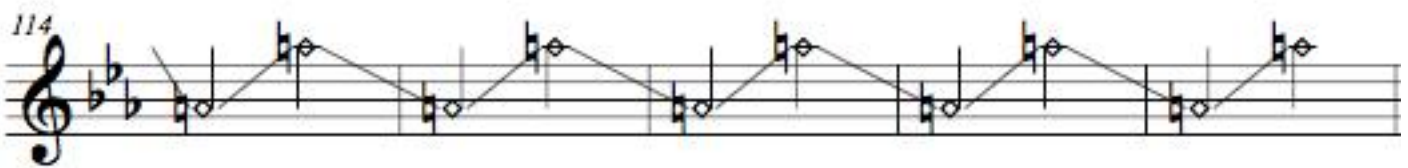
# Deadly Nightshade for Solo Cello



Danny Buckley

## An explantaion of extened techniques

Harmonic Glissando: Using the natural harmonics of The A string, rapidly gliss up and down within the given range. This is notated with diamond noteheads for maximum clarification.



# Deadly Nightshade

Danny Buckley

*Andante Forebodingly* ♩ = 72

Cello

Vc.

Vc.

Vc.

Vc.

Vc.

Vc.

Vc.

Vc.

Vc.

Vc.

*p*

*f*

*mp*

*f*

*p*

*mf*

*f*

Deadly Nightshade

4

40

Vc.

45

Vc.

50

Vc.

*mp*

*p*

*accel.*

55

Vc.

*ff*

*Moderato* ♩=90

*f*

59

Vc.

65

Vc.

69

Vc.

*ff*

74

Vc.

*p*

Vc.

Detailed description: This is a page of a musical score for a violin and cello. The score is in a key signature of two flats (B-flat major or D-flat minor) and a 2/4 time signature. It consists of eight systems of music. The first system (measures 40-44) features a complex melodic line in the violin with many accidentals and a cello accompaniment. The second system (measures 45-49) continues the melodic development in the violin, with a dynamic marking of *p* (piano). The third system (measures 50-54) shows the violin playing a more rhythmic pattern, with a dynamic marking of *mp* (mezzo-piano) and an *accel.* (accelerando) marking. The fourth system (measures 55-58) is marked *Moderato* with a tempo of ♩=90 and a dynamic marking of *ff* (fortissimo). It features a change in time signature to 3/4 and includes a section of sixteenth-note chords in the cello. The fifth system (measures 59-64) continues the 3/4 time signature with a dynamic marking of *f* (forte). The sixth system (measures 65-68) returns to a 2/4 time signature and includes a triplet in the violin. The seventh system (measures 69-73) features a dynamic marking of *ff* and includes a triplet in the violin and a cello accompaniment. The eighth system (measures 74-77) features a dynamic marking of *p* and includes a triplet in the violin and a cello accompaniment. The score concludes with a final measure in the cello part.

80  
Vc.

82  
Vc.

84  
Vc.

87  
Vc.

91  
Vc.

97  
Vc.

101  
Vc.

106  
Vc.

114  
Vc.

Deadly Nightshade

6

Vc. 121 *f*

Vc. 126 *Sul A* *Sul A* *p*

Vc. 131 *Pont* *f*

Vc. 138 *Allegretto Forebodingly*  $\text{♩} = 100$  *arco*

Vc. 144

Vc. 148 *ff*

Vc. 152

Vc. 157 *mp*

Vc. 163 *f*

Deadly Nightshade

Vc. <sup>168</sup>

Vc. <sup>173</sup>

Vc. <sup>178</sup>

Vc. <sup>182</sup> *molto rit.*