

MALOZI MA MOKONZI WA BISO YEZU KRISTU

Ce texte suit en principe l'Evangile de Saint Jean, mais avec quelques passages des autres Evangelistes

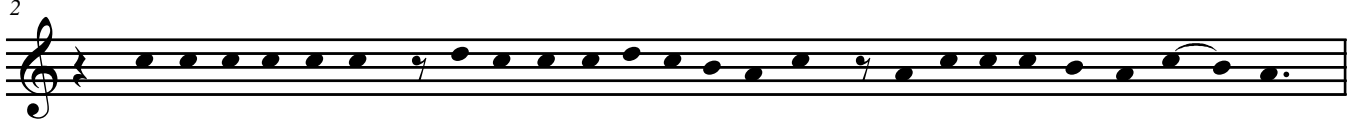
Comp: Mgr. Joseph MALULA

Texte complété selon le texte de Saint Jean
Mélodie revue et modifiée par:
Père **Hugo TEWES** (Svd)
Papa **André EMPUNDA**
Maestro **Didier MISHIBABO**
Paroisse Notre Dame d'Afrique / Lemba-foire

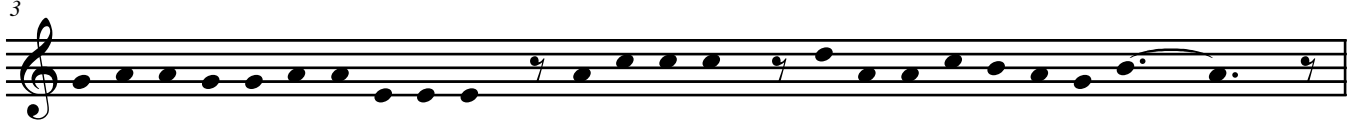
♩ = 45



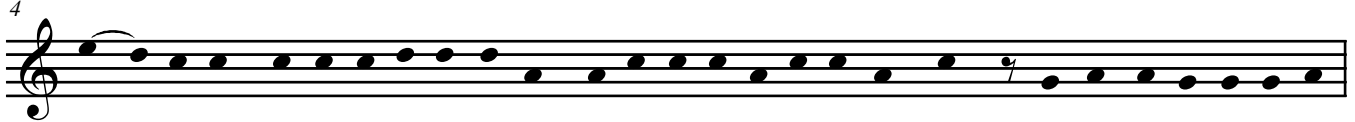
N: Ma-lo-zi ma Mo-ko-nzi wa bi-so Ye-zu Kri - tu, lo-ko-la e-ko-ma-mi na Sa-ntu Yo-a - ne.



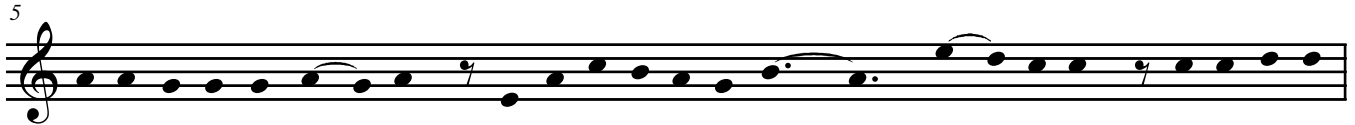
O mi-ko-lo mi-na, Ye-zu na ba-ye-ko-li ba Ye, ba-ka-ti-si mai ma Se - dron,



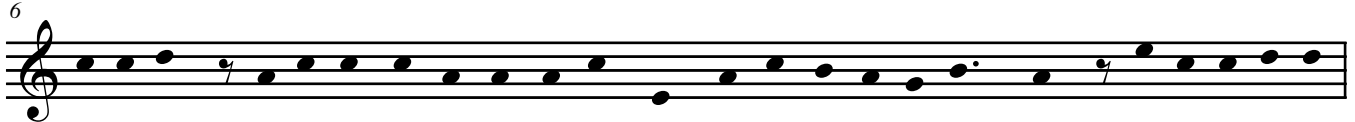
e - si - ka e - za - la - ka e - la - nga, a - yi - nge - li Ye na ba-ye-ko-li ba Ye e.



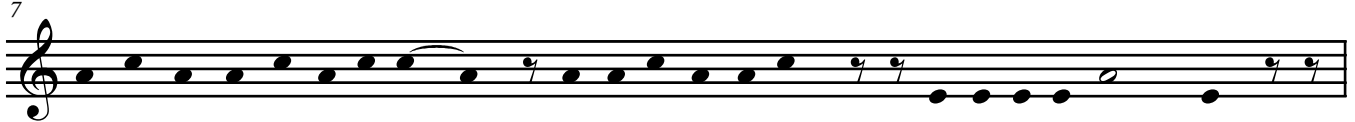
Yu - da-si mo-to a - te - ki Ye-zu, a - ye - ba - ki e - si - ka ya - ngo, za - mbi Ye - zu a - me - se -



ne - ki ko - ke - nde wa - na na ba - ye - ko - li ba Ye e. Yu - da - si a - ka - ma - ti



ba - so - da ba - si - mbi mii - nda na mbe - li, mpe ma - nge - nda o ma - bo - ko. Ye - zu a - mo - ni



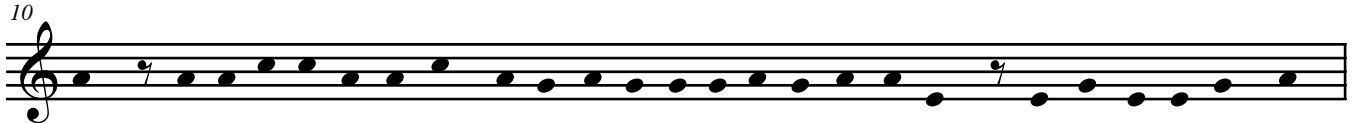
'te nta - ngo ya Ye e - ko - mi — a - lo - bi na bango: **Y:** Bo - ko - lu - ka na - ni?



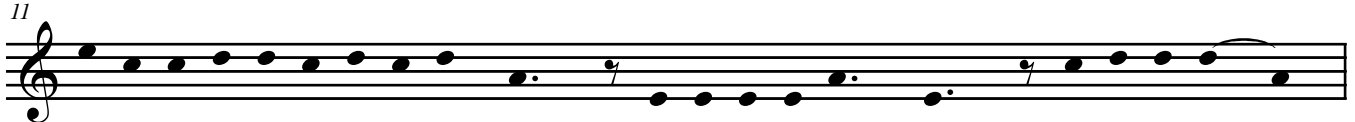
N: Ba - zo - ngi - si ba - lo - bi — **Ba:** Ye - zu wa Na - za - re - te. — **N:** Na si - ma Ye - zu a - lo -



bi na ba - ngo — **Y:** Nga - i o - yo. **N:** Yu - da - si mo - to a - te - ka Ye -



zu, a - za - la - ki na ba - ngo a - wa Ye - zu a - lo - bi te ngai o - yo, ba - kwei o ma - be - le.



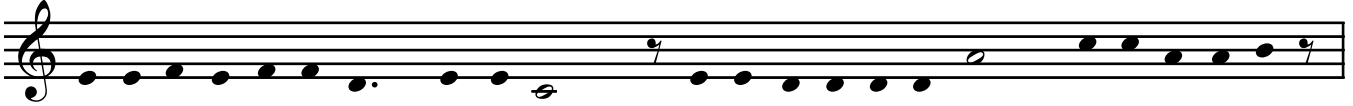
N: Ye - zu a - tu - ni ba - ngo li - su - su, **Y:** Bo - ko - lu - ka na - ni? **N:** Ba - zo - ngi - si: —

12



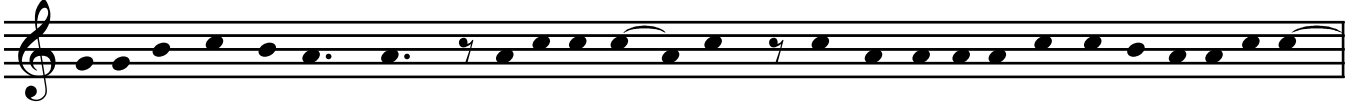
Ba: Ye-zu wa Na-za-re-te. _____ **N:** Ye-zu a-zo-ngi-si a-lo-bi: _____

13



Y: Na-lo-bi na bi-no 'te ngai o-yo, so-ko bo-ko-lu-ka ngai, bo-ti-ka ba-ye -

14



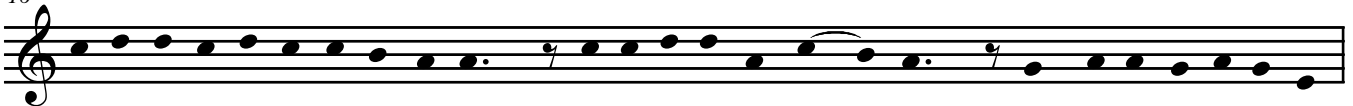
ko-li ba ngai ba ke - nde. **N:** A-sa-li bo - ngo mpo ya ma-lo-ba Ye mo-ko a-lo-ba-ki: _

15



— Na ba-to ba-nso o-pe-sa-ki ngai, mo-to mo - ko, a - bu - ngi _____ té.

16



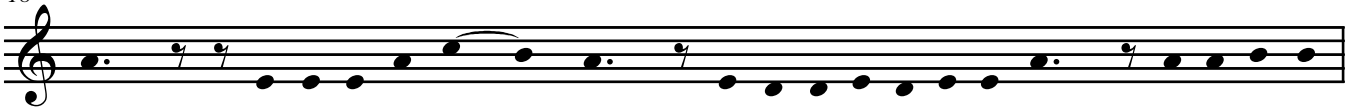
E-mo-ni Si-mo-ni Pe-tro bo-ye, a-bi-mi-si mo-mpa - nga, a - be-ti mo-sa-li wa

17



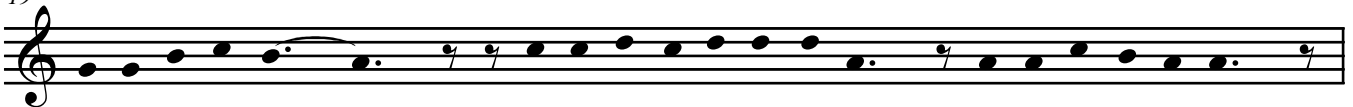
Nga-nga Mo-ko-nzi, a-mo-ka-ti li-to-yi ya mo-ba - li. Ka-si Ye-zu a-lo-bi na Pe-

18



tro: **Y:** Zo-ngi-sa mo-mpa - nga, Nke-ni Ta-ta a-pe-si ngai, o - li - ngi na

19



me-le ya-ngo té. _____ **N:** Ba-so-nda ba-si-mpi Ye-zu, ba-ka-ngi Ye si-nga,

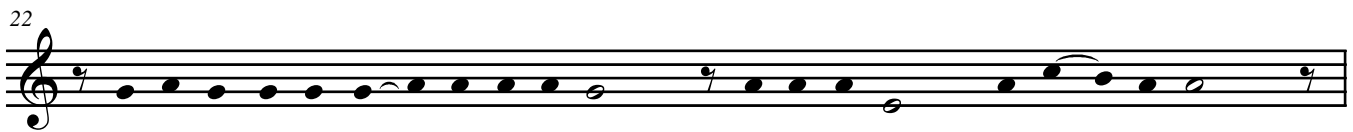
20



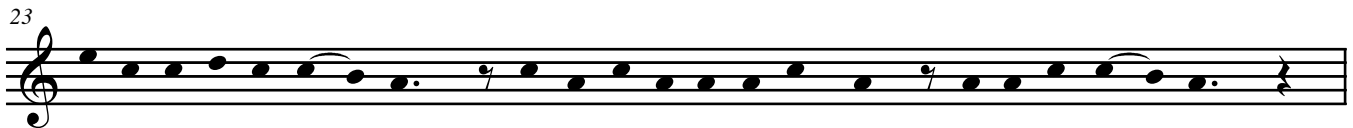
ba-ke-yi na Ye o mbo-ka An - na. An - na, a - za - la - ka bo - ki - lo wa Ka - i -



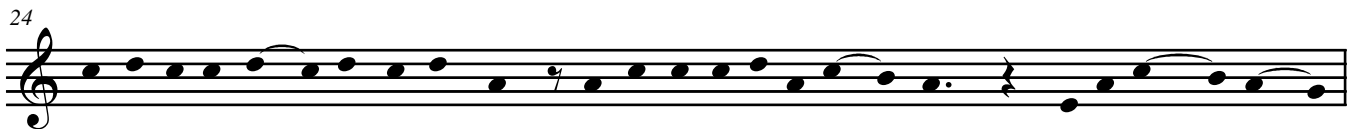
fa, Nga-nga Mo-ko-nzi o mo-bu - ya - ngo. Ye mpe-nza a - lo-ba-ki na Ba-Yu-da:



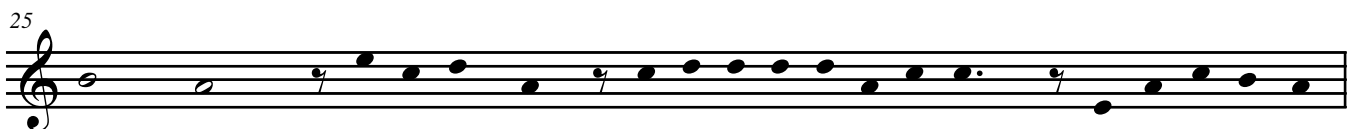
Ma-la-mu mo-to mo - ko a-ku-fa, ba-to ba-nso ba-ku - fa té.



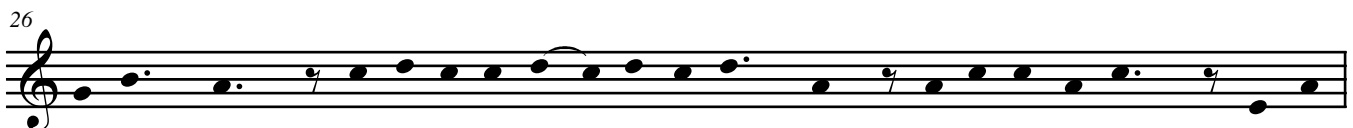
Ka-si Si-mo-ni Pe - tro, na mo-ye-ko-li mo-su - su, ba-la-ndi Ye - zu.



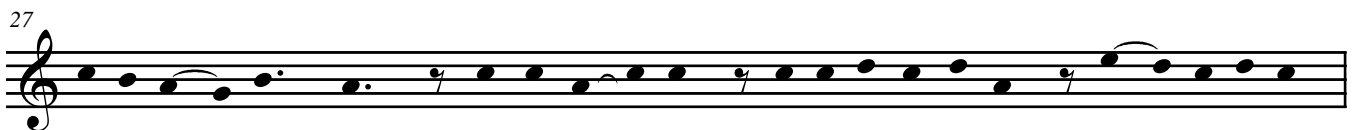
Mo-ye-ko-li wa - na mo-su - su a - yi-nge-li o lo-pa - ngo, e-lo-ngo__ na__



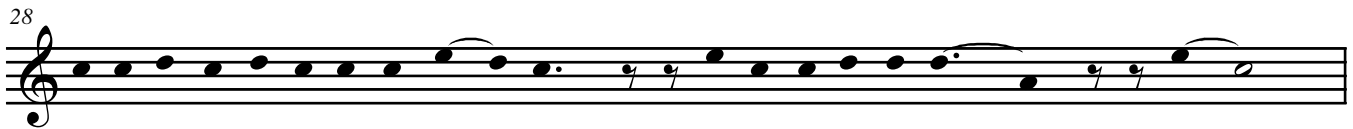
Ye - zu. Ka-si Pe - tro, a - ti - ka - li o li - ba-nda o mo-no-ko mwa



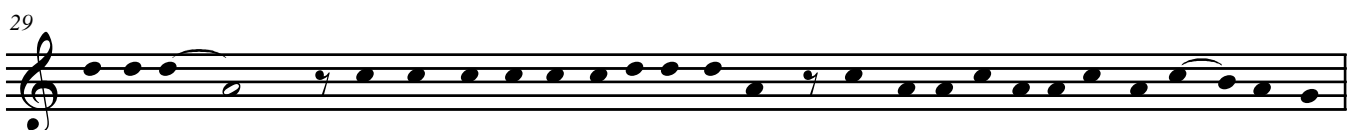
lo - pa - ngo. Mo-ye-ko - li wa - na mo-su - su, a - se-ngi nze-la! mpe ba -



ko - ti - si__ Pe - tro. Mwa-si mo - ko a - lo-bi na Pe-tro **Mw:** Yo - lo-ko-la



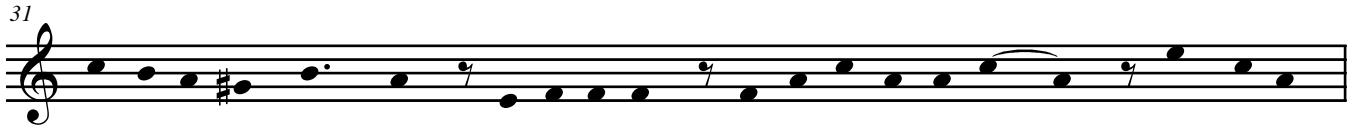
o - za - li mo-ye-ko - li wa Ye - zu. **N:** Pe-tro a - zo-ngi - si:__ **Pie:** Té__



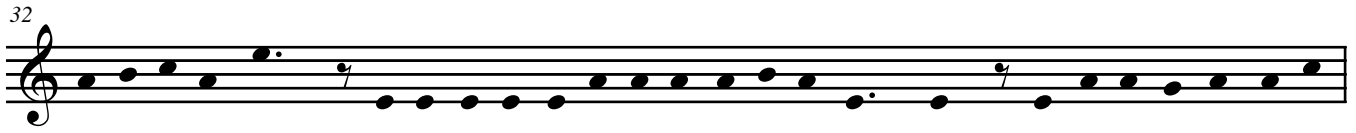
nga-i té!__ **N:** Nga-nga Mo-ko-nzi a - tu-ni Ye-zu, mpo ya ba-ye-ko-li na ma-te - ya ma



Ye. _____ **N:** Ye- zu a - zo - ngi - si: _____ **Y:** Na - te - ya - ki, o Te-mpe-lo,



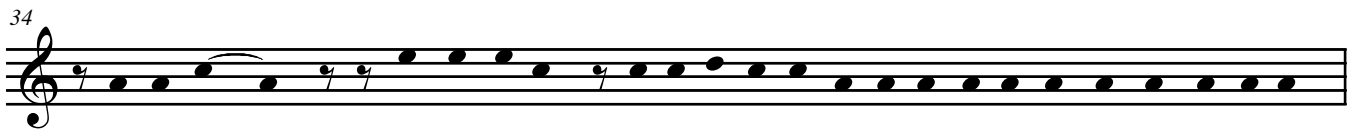
mpe o Si - na - go - ga. Na - te - ya - ki, na mo-bo-mba-mi té; _____ mpo ni - ni



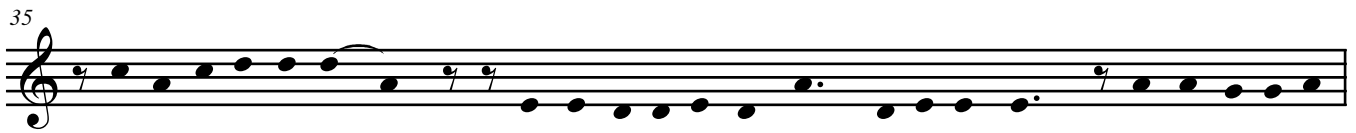
bo-ko-tu-na ngai, tu-na ba-ye ba-yo-ka-ki ma-te-ya ma ngai, ba-ye-bi ya-ngo ma-la



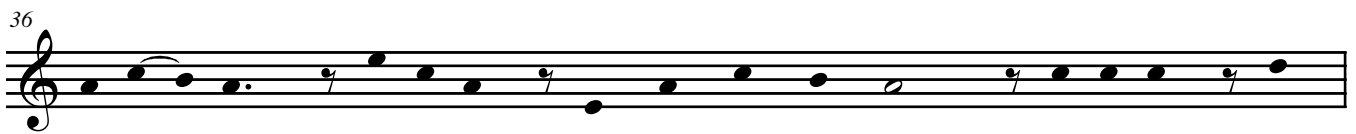
mu pe - nza. **N:** E - lo - bi Ye-zu bo-ye, Mo-sa - li mo-ko a - be - ti Ye-zu mba-ta!



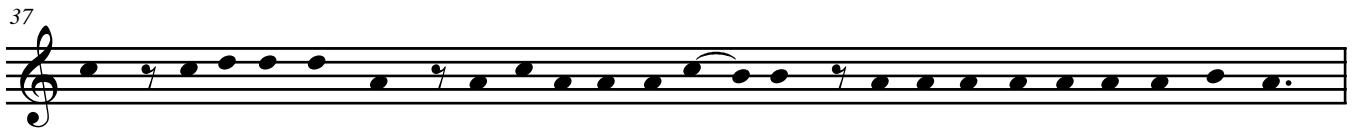
A - lo - bi _____ **Mo:** Nde-nge ni-ni o-ko-zo-ngi-sa mo-no-ko bo-ye na Nga-nga Mo-konzi!



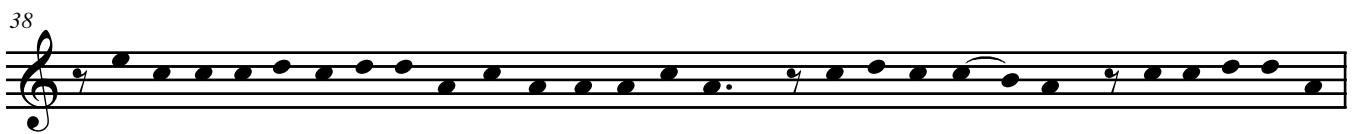
N: Ye-zu a - zo - ngi - si: _____ **Y:** So - ko na - lo - bi ma - mbe, la - ki - sa ngai, so - ko na - lo - bi



ma - la - mu, mpo ni - ni o - ko - be - te ngai. **N:** Na nsi-ma, An -



na, a - ti - ndi Ye - zu e - pa - yi ya Ka - i - fa, Mo-ko-nzi wa ba-nga-nga Nza-mbe.



Ye-zu a - za - li bo-be-le na nsi-nga o ma-bo-ko. Si-mo-ni Pe - tro a - za - la - ki ko -

39



yo-to mo-to, o li-ba-nda - ya nga-nga Mo-ko-nzi. Mo-sa-li mo-ko a-mo-tu-ni; _____

40




Mo: Yo _____ lo-ko-la, o-za-li mo-ko ya ba-ye-ko-li ba ye té? _____ **N:** Pe-tro a-wa-nga-ni a-lo-

41



bi: _____ **Pie:** Té! _____ nga-i té! _____ **N:** Mo-sa-le-li mo-ko wa nga-nga Mo-ko-nzi,

42



nde-ko wa mo-to Pe-tro a-ka-ta-ki li-to - i a-lo-bi: **Mo:** Ngai na-mo-na-ki bi-no na

43



Ye-zu o e-la-nga té? **N:** Pe-tro a-wa-nga-ni li-su - su, mpe nso-so e-le - li.

44



Na nto-ngo saa, ba-lo-ngwi o nda-ko ya Ka-i-fa, ba-ke-i na Ye - zu, e-pa-i

45



ya Mo-ya-nge-li wa e-ko - lo. Ba-ngo mo-ko, ba-yi-nge-li o nda-ko ya Mo-ya-nge-li té,

46



za-mbi e-ki-la e-za-li, mpo _____ ya ba - ye ba-li-ngi ko-li-ya li-mpa-ti lya Pa - si-ka.

47



Pi-la-to a-bi-mi a-tu-ni Ba-yu-da; **Pi:** Mpo - ni-ni bo-ko-fu-nda mo-to o - yo?

48



N: Ba-zo-ngi-si: — **Ba:** So-ko a-sa-la-ki ma-be té — mbe-le to-yei na-Ye a-wa té.

49



N: Pi-la-to a-lo-bi: — **Pi:** Ka-ma-ta-ni ye, bo-sa-mpi-sa ye bi-no mo - ko, lo-ko-

50



la mo-be-ko mwa bi-no mo-ko-ti-nda. **N:** Ba-yu-da ba-zo-ngi si — **Ba:** Bi-so mo-ko to-

51



ko-ki ko-ki-ti-sa mo-to na li-wa — té. **N:** Ba-za-li ko-ko-ki-sa bo - ngo ma-lo-ba ma

52



Ye - zu; a-ye-bi-sa-ki nde-nge ni - ni, a ko-ku-fa. Pi-la-to a-yi-nge-li o nda-

53



ko, a - tu - ni Ye-zu: **Pi:** Yo Mo-ko-nzi wa ba-Yu-da to? **Y:** Ye-zu a - zo-ngi-

54



se-li ye. — **Y:** Yo mo - ko o-lo-bi bo - ngo, to ba-to ba-su-su ba-lo-ba-ki bo - ngo,

55



mpo ya ngai? **N:** Pi - la - to a - lo - bi: — **Pi:** Na-ko-mi nde mo-yu-da, ba-to

56



ya e-ko-lo ya yo na ba-nga-nga ba-ko-nzi ba-ye-i ko-fu-nda yo a - wa, O-sa-li ni-ni?

57



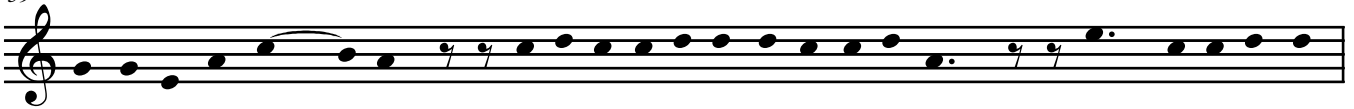
N: Ye-zu a-zo-ngi-si: — **Y:** Bo-ko-nzi bwa ngai bo-za-li bwa nse té — so-ko bo-za-la-ki bwa nse

58



e - ye, mbe-le ba-so-da ba ngai, ba-bu-nde-li ngai e - tu - mba, mpo — ba-Yu-

59



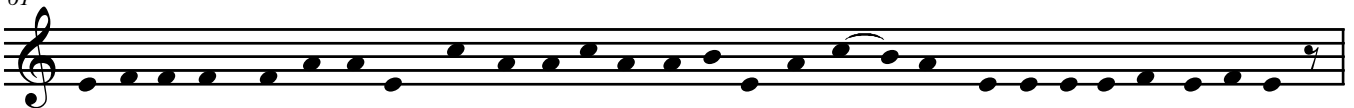
da ba-ka-nga ngai — té. **N:** Pi-la-to a-tu-ni Ye-zu li-su-su: **Pi:** Yo o-za-li nde

60



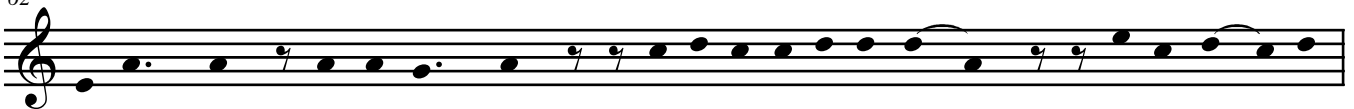
Mo-ko-nzi? **N:** Ye-zu a-zo-ngi-si: — **Y:** O-lo-bi, na-za-li Mo-ko - nzi,

61



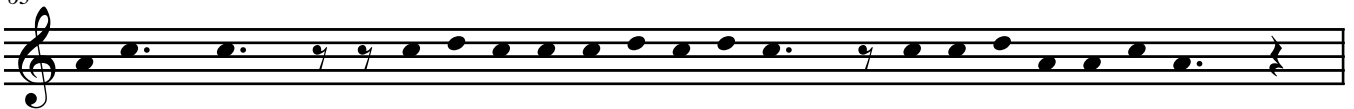
Na-bo-ta-mi, o nse e-ye mpo ya ko-te-ya ma-te-ya ma so - lo, mo-to a-li-ngi ko-ye-ba

62



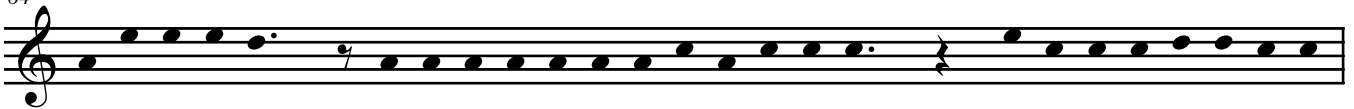
bo-so - lo, a-yo-ka ngai. **N:** Pi-la-to a-tu-ni ye: — **Pi:** Ni-ni wa - na

63



bo-so - lo? **N:** Pi-la-to a-bi-mi li-su-su, a-lo-bi na ba-Yu-da:

64

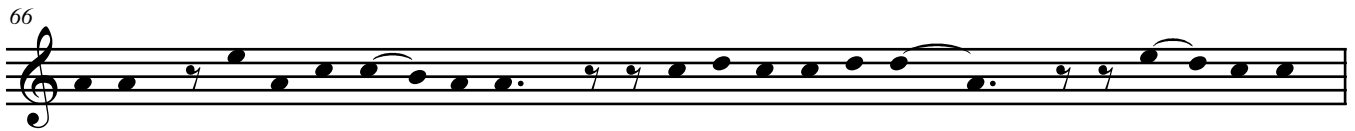


Pi: Na-mo-ni nti-na ya-ko-ki-ti-sa mo-to o-yo so-ki té, ka-si na-me-sa-na ko-bi-

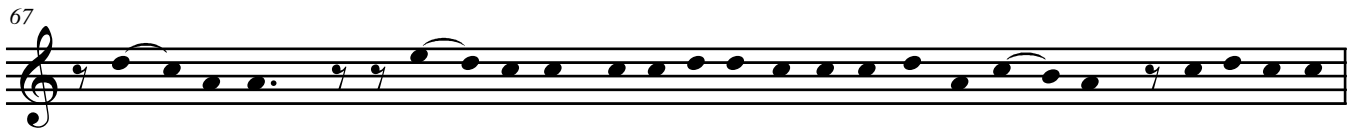
65



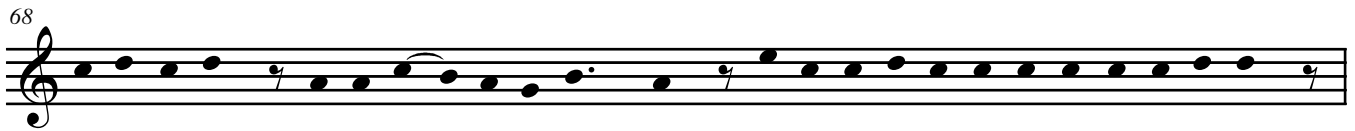
mi-se-la bi-no mo-to mo - ko o bo-lo-ko. o e-ye-nga ya Pa - si-ka; na-ni na-bi -



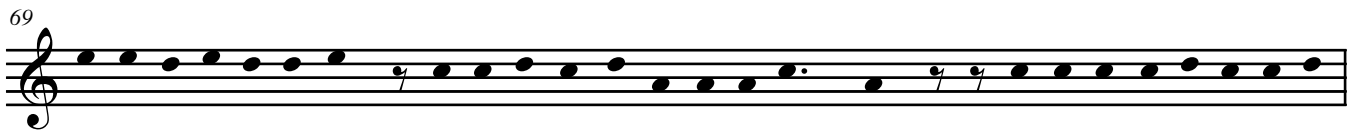
ki-sa? Ye-zu to Ba - ra-bas **N:** Ba-Yu-da ba-nga-ngi: — **Ba:** Ba - ra-bas,



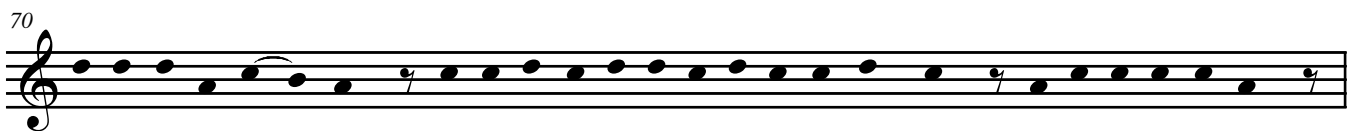
Ba - ra-bas. **N:** Ba - ra-bas a - za - la - ki mo-bo-mi na mo-yi - bi, Pi-la-to a -



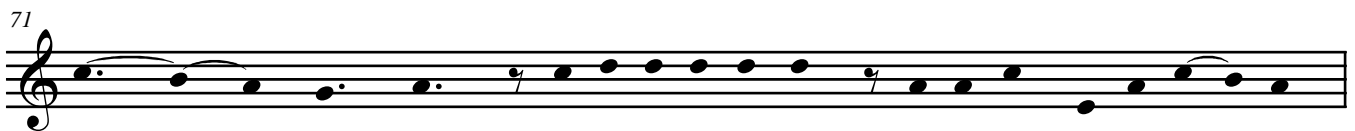
lu - ki nze-la ya-ko-bi - ki-sa Ye - zu. Ka-si Ba-Yu-da na ba-nga-nga-ba-ga-ngi



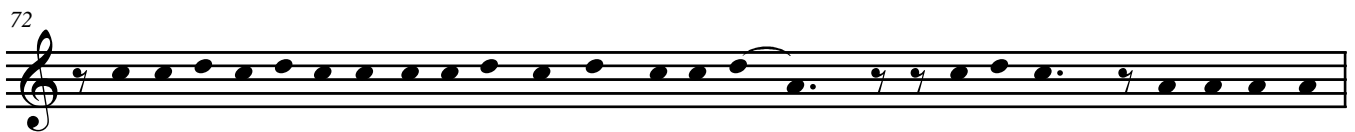
Ba: So-ko o - bi - ki - si Ye, to-ko-fu-nda yo na Ka - i - za - ro. **N:** Na si-ma Pi - la - to a - be -



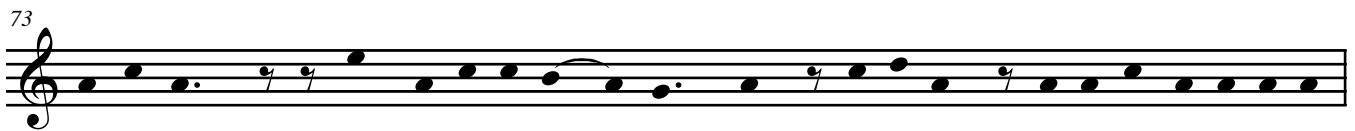
ti - si Ye-zu fi - mbo, Ba-so-da ba-li - ti e - ka - ta ya nzu - be, ba-la - ti - si Ye-zu,



o ————— mo - to. Ba - la - ti - si ye mpe, e - la - mba ya mo - ta - ne.



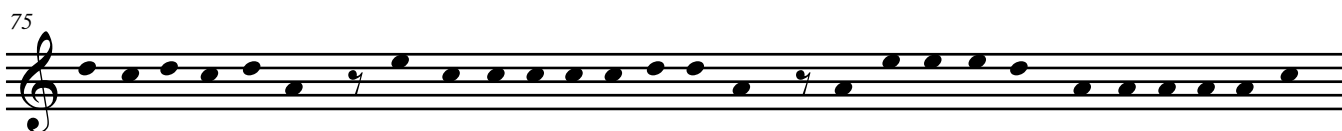
Ba-ke - i ko-te-le-ma o-bo-so bwa Ye ba-lo-bi: — **Baso:** Lo-sa-ko, Mo-ko-nzi wa



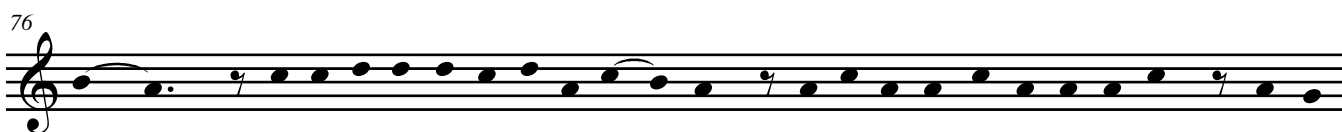
Ba-Yu-da! **N:** Mpe ba-be-ti Ye — mba - ta. Pi - la - to, a - li - ngi ko - ki - ti - sa



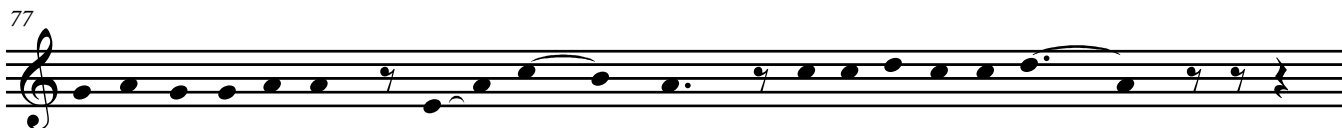
Ye-zu té. A - bi - mi li - su - su, a - lo - bi na ba - ngo: — **Pi:** Na-ko-bi-mi-sa



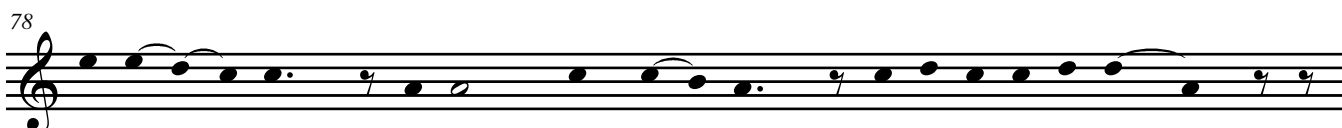
Ye li-su-su a-wa, mpo ya ko-la-ki-sa bi-no 'te, na-mo-ni nti-na ya ko-ki-ti-sa Ye



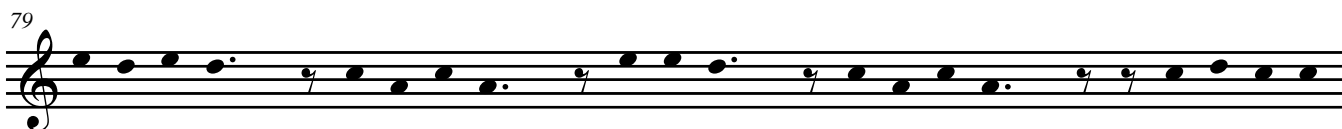
té! — **N:** A-bi-mi-si Ye-zu o li-ba - nda, e-ka-ta ya nzu-be o mo-to, mpe e -



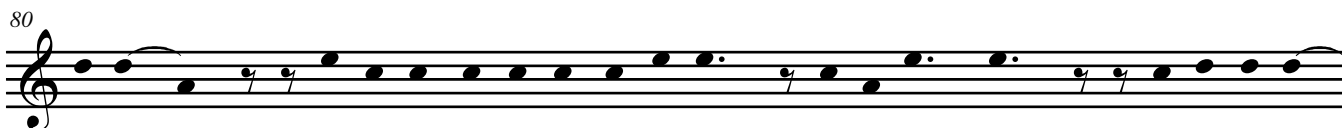
la-mba ya mo-ta - ne o — nzo - to. A - lo - bi na ba - ngo —



Pi: Bo - ta - la, Mo - to - ye o - yo! **N:** Ba - Yu - da ba - nga - ngi: —



Ba: O ku - ru - se, o ku - ru - se, a - ku - fa o ku - ru - se! **N:** Pi - la - to a -



tu - ni: — **Pi:** Na - bo - ma Mo - ko - nzi wa bi - no, o ku - ru - se? **N:** Ba - zo - ngi - si: —



Cette partie qui n'est pas de Jean, est à revoir.

— **Ba:** Bi - so to - ye - bi se Ka - i - za - ro, Mo - ko - nzi mo - su - su té.




N: Pi - la - to a - lo - bi: — **Pi:** Na - sa - la ni - ni, na Ye - zu wa Na - za - re - te? **Ba:** O ku - ru -




se, o ku - ru - se, a - ku - fa o ku - ru - se! **N:** Pi - la - to a - mo - ni 'te,

84



a - ko - lo - nga so - ki té ko - bi - ki - sa - Ye - zu. E - mo - ni e mo - bu - lu mo - ba -

85



ndi ko - bi - ma mi - ngi. A - ka - ma - ti ma - yi, mpe a - su - ko - li ma - bo - ko, o mi - so ma

86



ba - ngo. Mpe a - ye - bi - si ba - ngo 'te: **Pi:** Li - ka - mbo lya ma - ki - la ya mo - to o - yo,


87



li - ta - li nga - i té, li - ta - li se bi - no mo - ko. **N:** Pi - la - to a - pe - si ba - ngo Ye - zu

Fin de la partie à revoir

88



ba - bo - ma Ye, o ku - ru - - - se.

89



N: Ye - zu a - me - mi ku - ru - se. A - bu - ti ngo - mba ya Gol - go - tha - , Mpe o - ka -

90




ti ya ba - bo - mi ba - ba - le ba - mo - ba - ki — o ku - ru - se. O li - ko - lo

91



lya ku - ru - se, Pi - la - to a - ko - ma - ki: — Ye - zu wa Na - za - re - te, —

92




Mo - ko - nzi wa Ba - Yu - da. Ba - Yu - da ba - bo - yi ma - lo - ba ma - na, ba - se - ngi Pi - la - to

93



a - bo - ngo-la. Pi - la - to a - zo - ngi - si: _____ **Pi:** Na - ko - mi e - si - li se bo -

94



ye. **N:** E - si - li - si ba - so - da ko - ba - ka Ye - zu o ku - ru - se. Ba - ka - ma - ti bi - la - mba bya

95



Ye, ba - ka - ti bya - ngo bi - te - ni bi - ne - i mpo _____ 'te so - da mo - ko, mo - ko a - zwa e - te -

96



ni. Ka - si ba - we - li na ze - ke e - la - mba e - ye ya mo - ko - to, ba - so - na - ki na ma - bo -

97



ko. Pe - ne - pe - ne ya ku - ru - se, Ma - ri - a a - te - le - mi _____ na Ma - ri - ya Ma - de -

98




le - ni na Yo - a - - ne. Ye - zu a - ta - li Ma - ma wa ye, a - lo - bi: _____

99




Y: Eh Ma - ma ta - la mwa - na wa yo. **N:** Mpe a - lo - bi na Yo - a -

100



- ne: **Y:** Ta - la Ma - ma wa yo! **N:** Bo - be - le mo - ko - lo mo - na,

101



Ma - ri - a, a - ke - i ko - va - - nda o mbo - ka Yo - a - - ne.

102



N: E - ko - mi mi - di, Mo - li - li mo - kwe - i o mo - ki - li mo - bi - mba tee ngo - nga ya i - sa - to.

103



O ngo - nga ya i - sa - to, Ye - zu a - ga - ngi ma - ka - si. A - lo - bi: _____

104



Y: E - lo - i, _____ E - lo - i, _____ la - ma sa - ba - ta - ni!

105



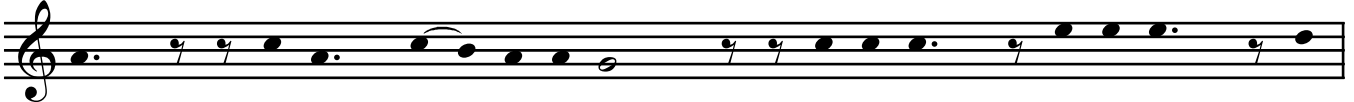
E - lo - i, E - lo - i, la - ma sa - bak - ta - ni!

106



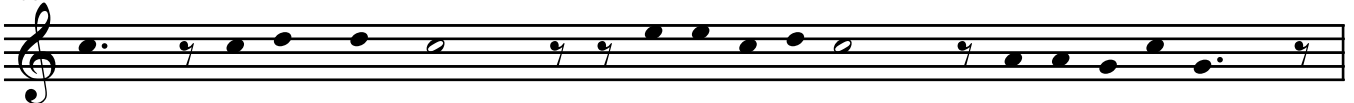
Ba: Yo - ka a - ko - bya - nga, E - li - ya. **Y:** E - lo - i, _____ E - lo - i, _____

107



_____ la - ma sa - bak - ta - ni! E - lo - i, E - lo - i, la -

108



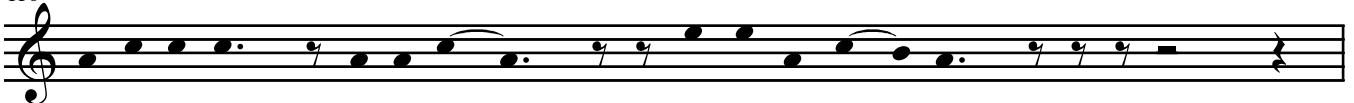
ma sa - bak - ta - ni **Ba:** Ti - ka to - ta - la, so - ko E - li - ya,

109



a - ko - ya - ko - ki - ti - sa ye, na ku - ru - se. **N:** E - mo - ni Ye - zu 'te, ma - nso

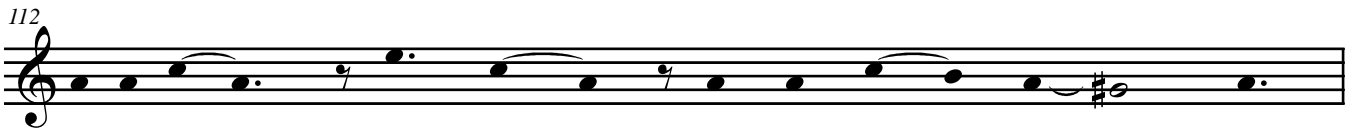
110



ma - sa - le - mi, a - lo - bi: _____ **Y:** Mpo - sa ya ma - yi.



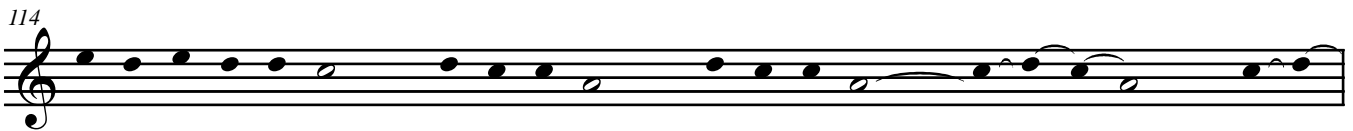
N: Ba-pe-si Ye-zu ma-sa-nga bo-lo-lo e-si-ka ya ma - yi. Ye-zu a-me-ki ma-ngo,



a - lo - bi: _____ **Y:** Ma - nso _____ ma - ko - ki - sa - - - mi!



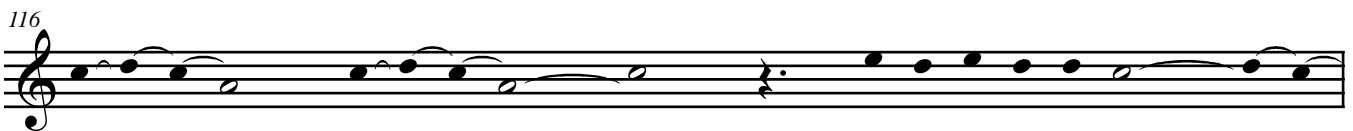
N: Ye-zu a-gu-mpi mo-to, mpe a-ka - ti mo - te - ma. (Silence)



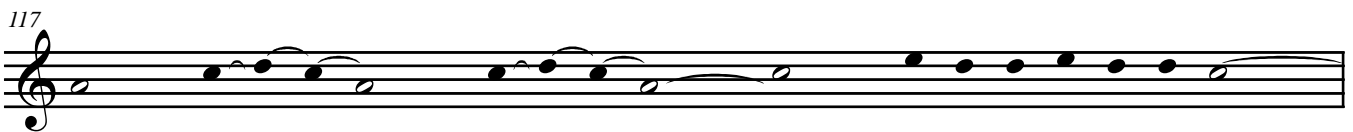
Ye-zu wa A-bra-ma, wa I-za-ki, wa Ya-ko-bo _____ o o



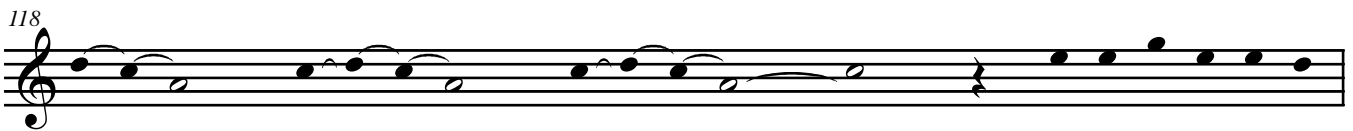
o o o o o o! _____ Ye-zu wa Da-vi-di, _____



i i i i i i i i! _____ Mwa-na wa Ma-ri-a _____



a a a a a a a a a! _____ Nsu-ka wa ba-pro-fe-ta,

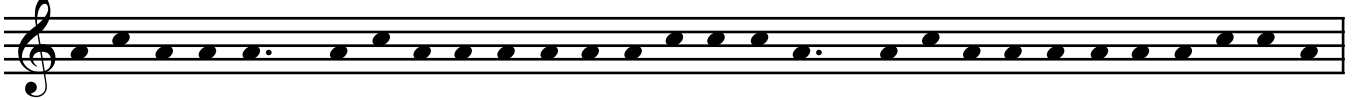


a a a a a a a a a a! _____ E-lo-mbe a-we-i-



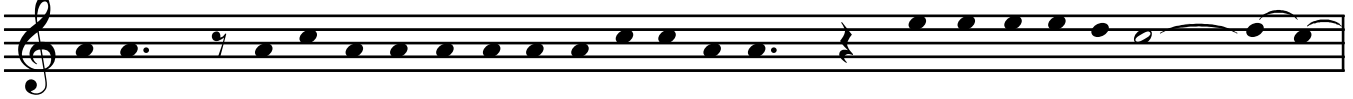
e, _____ e e e e, e e e e! _____ Mo-ko-nzi wa

120



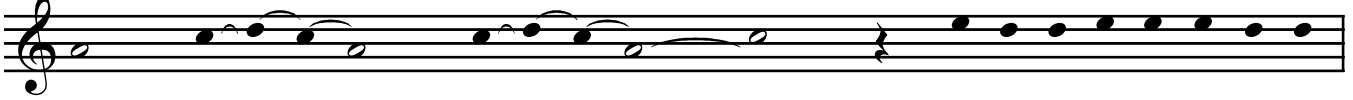
li-wa na bo-moi, Mo-bi-ki-si wa ba-to ba-ku-fa mi-so, Mo-bi-ki-si wa ba-to ba-ku-fa ma-

121



ko-lo, Mo-se-kwi-si wa ba-to ba-ku-fa ka-la, Nga-nga a-we-i e_____

122



e, e e e e, e e e e e! Ye-zu o-ku-fi mpo na ni-

123



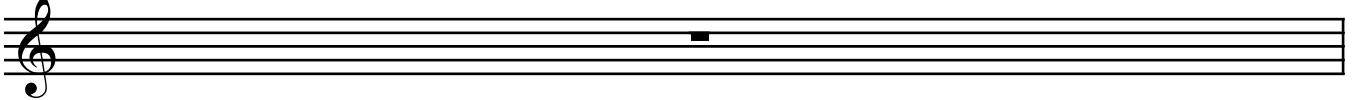
ni? **Tous:** Mpo ya ma-su-mu ma bi-so. Yo-ke-la bi-so ma-wa,_____

124



a a a a, a a a a a!_____

125

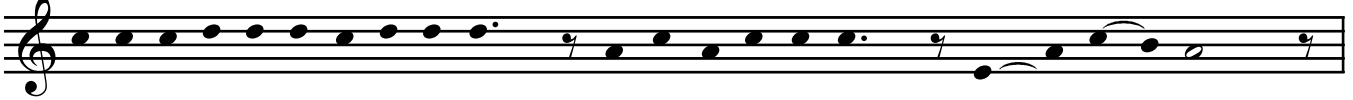


126



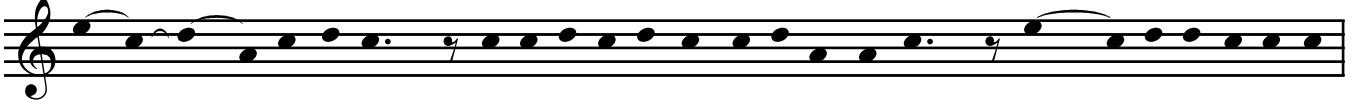
N: Yo - - ze-fu, wa A-ri-ma-te - a, a-za-la-ki mo-ye-ko-li wa Ye - zu.

127




A-mi-la-ki-sa-ki po-le-le té, za-mpi a-ba-nga-ki Ba - Yu - da.

128




Si - - ka a-wa a-ke-i ko-se-nga Pi-la-to nze-la, mpo_____ a-ba-ko-la e-

129




be-mbe ya Ye - zu, O - o - o ku - ru - - - se. _____

130



Pi - la - to, a - ndi - mi. Bo - ngo, ba - ye - i ko - lo - ngo - la E - be -

131



- - mbe.