



Bernard Dewagtere

France, SIN LE NOBLE

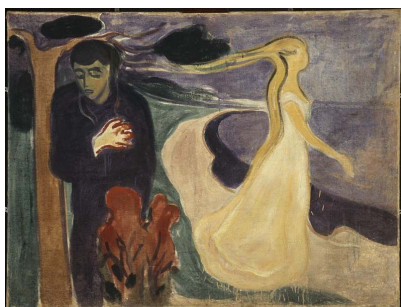
6 duos à Edvard Munch (2. Separation II)

A propos de l'artiste

Docteur en musicologie, chef d'orchestre et compositeur.
Compositions et arrangements de toutes époques, dans tous les styles ou genres musicaux et pour n'importe quelles formations instrumentales ou vocales.

Qualification : Docteur en Musicologie
Sociétaire : SACEM - Code IPI artiste : 342990
Page artiste : https://www.free-scores.com/partitions_gratuites_bernard-dewagtere.htm

A propos de la pièce



Titre : 6 duos à Edvard Munch
[2. Separation II]
Compositeur : Dewagtere, Bernard
Droit d'auteur : Copyright © Dewagtere, Bernard
Instrumentation : Vibraphone ou Marimba ou Xylophone
Style : 20eme siecle
Commentaire : Séparation II, 1896 - Lithographie 41 x 62,5 cm

Bernard Dewagtere sur [free-scores.com](https://www.free-scores.com)

LICENCE

Cette partition nécessite une autorisation :
- pour les représentations publiques
- pour l'utilisation par les professeurs

S'acquitter de cette licence sur :

<https://www.free-scores.com/licence-partition.php?partition=41629>



- écouter l'audio
- partager votre interprétation
- commenter la partition
- s'acquitter de la licence
- contacter l'artiste

Interdiction de diffusion sur d'autres sites Web.

6 duets for Edvard Munch

2
41

1

2

sf sf mp

sf sf mp

Detailed description: This system contains measures 41 through 48. The first staff (treble clef) begins with a measure rest, then plays a series of notes with a dynamic of *sf* (sforzando) in measures 42 and 43, followed by a *mp* (mezzo-piano) dynamic in measure 44. The second staff (bass clef) has a measure rest, then plays notes with *sf* dynamics in measures 42 and 43, and *mp* in measure 44. There are accents (>) over notes in measures 42, 43, and 44.

49

1

2

f f mp

f mp f

Detailed description: This system contains measures 49 through 57. The first staff (treble clef) starts with a *f* (forte) dynamic in measure 49, then *mp* in measure 50, and *f* in measure 51. The second staff (bass clef) starts with a *f* dynamic in measure 49, then *mp* in measure 50, and *f* in measure 51. There are accents (>) over notes in measures 50 and 51.

58

rit. **Lento**

1

2

f mp p p

subito p f p p

Detailed description: This system contains measures 58 through 66. The tempo is marked **Lento** with a *rit.* (ritardando) marking. The first staff (treble clef) has a *f* dynamic in measure 58, *mp* in measure 59, and *p* (piano) in measures 60 and 61. The second staff (bass clef) has a *subito p* dynamic in measure 58, *f* in measure 59, and *p* in measures 60 and 61. There are trills (*tr.*) in measures 58 and 59, and triplets in measure 61.

67

rit. **Più lento** **Molto lento**

1

2

p p mp p

p p mp p

Detailed description: This system contains measures 67 through 76. The tempo is marked **Più lento** and **Molto lento** with a *rit.* marking. The first staff (treble clef) has a *p* dynamic in measure 67, *mp* in measure 68, and *p* in measures 69 and 70. The second staff (bass clef) has a *p* dynamic in measure 67, *mp* in measure 68, and *p* in measures 69 and 70. There are triplets in measure 68.

77

1

2

p p mp p

p p mp p

Detailed description: This system contains measures 77 through 84. The first staff (treble clef) has a *p* dynamic in measure 77, *mp* in measure 78, and *p* in measures 79 and 80. The second staff (bass clef) has a *p* dynamic in measure 77, *mp* in measure 78, and *p* in measures 79 and 80. There are accents (>) over notes in measures 78 and 79.