



Bernard Dewagtere

France, SIN LE NOBLE

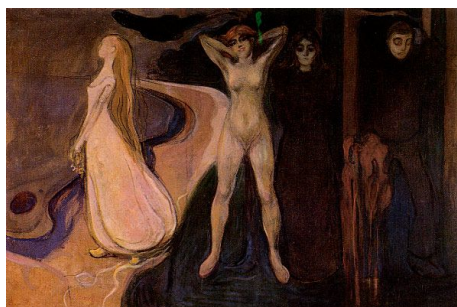
6 duos à Edvard Munch (4. Woman in Three Stages)

A propos de l'artiste

Docteur en musicologie, chef d'orchestre et compositeur.
Compositions et arrangements de toutes époques, dans tous les styles ou genres musicaux et pour n'importe quelles formations instrumentales ou vocales.

Qualification : Docteur en Musicologie
Sociétaire : SACEM - Code IPI artiste : 342990
Page artiste : https://www.free-scores.com/partitions_gratuites_bernard-dewagtere.htm

A propos de la pièce



Titre : 6 duos à Edvard Munch
[4. Woman in Three Stages]
Compositeur : Dewagtere, Bernard
Droit d'auteur : Copyright © Dewagtere, Bernard
Instrumentation : 2 Trompettes (duo)
Style : 20eme siecle
Commentaire : Femme en trois étapes, 1894 - Huile sur toile 164 x 250 cm

Bernard Dewagtere sur [free-scores.com](https://www.free-scores.com)

LICENCE

Cette partition nécessite une autorisation :
- pour les représentations publiques
- pour l'utilisation par les professeurs

S'acquitter de cette licence sur :

<https://www.free-scores.com/licence-partition.php?partition=41782>



- écouter l'audio
- partager votre interprétation
- commenter la partition
- s'acquitter de la licence
- contacter l'artiste

Interdiction de diffusion sur d'autres sites Web.

6 duets for Edvard Munch

4. Woman in Three Stages

Bernard Dewagtere

Allegretto

Trumpet in Bb 1

Trumpet in Bb 2

mf

mf

sf

mp

p

f

tr

p

f

mf

mp

mf

rit.

molto rit.

pp

6 duets for Edvard Munch

2
22 Moderato

1 *mf*

2 *mf* *mp*

Detailed description: This system contains measures 22 to 25. The key signature has two sharps (F# and C#). The tempo is marked 'Moderato'. The first staff (labeled '1') begins with a dynamic of *mf* and features a melodic line with eighth-note patterns. The second staff (labeled '2') starts with *mf* and has a more rhythmic accompaniment. Dynamic markings change to *mp* in the final measure of this system.

26

1 *mf* *sf*

2 *mf* *mp* *sf*

Detailed description: This system contains measures 26 to 29. The first staff (labeled '1') starts with *mf* and ends with *sf*. The second staff (labeled '2') starts with *mf*, moves to *mp* in the third measure, and ends with *sf*. The music continues with melodic and rhythmic development in both parts.

30

1 *mp* *p* *f*

2 *mp* *p* *f* *mf*

Detailed description: This system contains measures 30 to 35. The first staff (labeled '1') has dynamics of *mp*, *p*, and *f*. The second staff (labeled '2') has dynamics of *mp*, *p*, *f*, and *mf*. Trills (tr) are indicated above notes in the first staff in the final two measures. The music features complex rhythmic patterns and dynamic contrasts.

36

1 *mp* *rit.* *molto rit* *pp*

2 *mp* *pp*

Con sord.

Detailed description: This system contains measures 36 to 41. The first staff (labeled '1') starts with *mp*, followed by *rit.* and *molto rit.* markings, and ends with *pp*. The second staff (labeled '2') starts with *mp* and ends with *pp*. The instruction 'Con sord.' (Con sordidato) is written below the second staff in the final measure. The music concludes with a dense, chromatic texture.

Grave

43

1 *Con sord. p*

2 *p mp*

Detailed description: This system contains measures 43 to 46. The first staff (1) begins with a treble clef, a key signature of three sharps (F#, C#, G#), and a common time signature. It starts with a dynamic of *p* and the instruction *Con sord.*. The melody consists of eighth notes with stems pointing down, followed by a series of quarter notes with stems pointing up. The second staff (2) starts with a dynamic of *p* and features a bass clef. It contains a series of quarter notes with stems pointing up, followed by a series of eighth notes with stems pointing down. The dynamic changes to *mp* in the final measure of this system.

47

1 *p*

2 *p p*

Detailed description: This system contains measures 47 to 50. The first staff (1) continues with eighth notes with stems pointing down, followed by quarter notes with stems pointing up. The dynamic is *p*. The second staff (2) continues with quarter notes with stems pointing up, followed by eighth notes with stems pointing down. The dynamic is *p* in the first measure and *p* in the last measure of the system.

51

1 *p pp* *rall.*

2 *p pp*

Detailed description: This system contains measures 51 to 54. The first staff (1) features a melodic line with a dynamic of *p* in the first measure, *pp* in the second, and a *rall.* instruction above the staff in the third measure. The second staff (2) features a similar melodic line with a dynamic of *p* in the first measure and *pp* in the second. Both staves end with a double bar line and a fermata.

55

1 *mp*

2 *mp p pp* *morendo*

Detailed description: This system contains measures 55 to 58. The first staff (1) has a treble clef and a dynamic of *mp*. It contains a single half note followed by a whole rest. The second staff (2) has a bass clef and a dynamic of *mp*. It contains a series of quarter notes with stems pointing up, followed by eighth notes with stems pointing down. The dynamic changes to *p* and then *pp* in the final two measures. The system concludes with the instruction *morendo*.