



# Alexandre Schimel

Brésil

## A propos de l'artiste

**Page artiste :** [https://www.free-scores.com/partitions\\_gratuites\\_schimel.htm](https://www.free-scores.com/partitions_gratuites_schimel.htm)

## A propos de la pièce

**Titre :** Psalm 118  
[DER FLUYTEN LUST-HOF]  
**Compositeur :** Eyck, Jacob van  
**Arrangeur :** Schimel, Alexandre  
**Droit d'auteur :** Copyright © Alexandre Schimel  
**Editeur :** Schimel, Alexandre  
**Instrumentation :** Flûte à bec soprano ou ténor  
**Style :** Baroque

## Alexandre Schimel sur [free-scores.com](https://www.free-scores.com)

### LICENCE

Cette partition nécessite une autorisation :

- pour les représentations publiques
- pour l'utilisation par les professeurs

**S'acquies de cette licence sur :**

<https://www.free-scores.com/licence?p=aGPjliTERm>



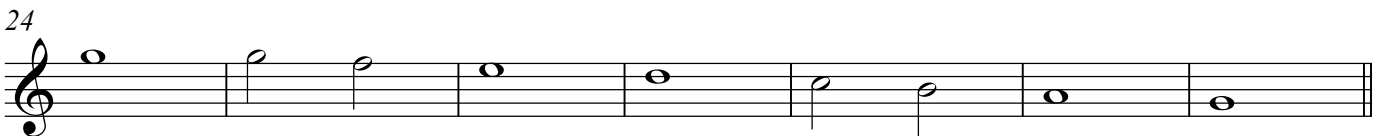
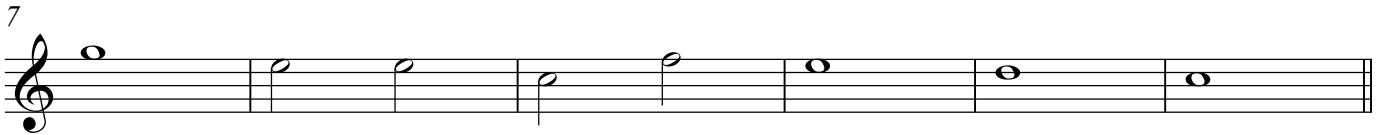
- écouter l'audio
- partager votre interprétation
- commenter la partition
- s'acquies de la licence
- contacter l'artiste

**Interdiction de diffusion sur d'autres sites Web.**

# Psalm 118

## DER FLUYTEN LUST-HOF

Jacob VAN EYCK



62



68



74



80



86



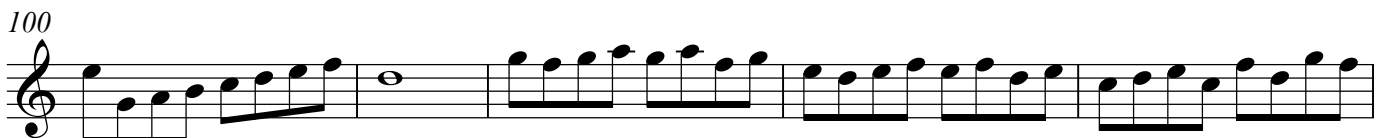
91



96 **Modo 3**



100



105



110



114





162



166



169



173



176



179



182



185



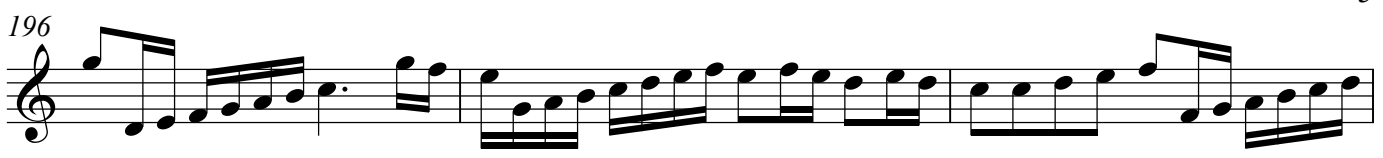
187

190 **Modo 5**

193

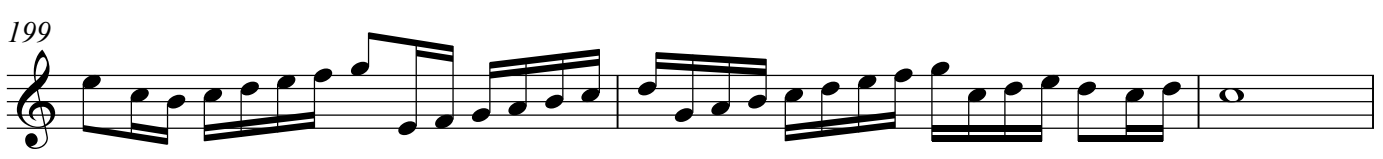


196



Measures 196-198: Treble clef, 2/4 time. Measure 196 starts with a quarter note G4, followed by eighth notes A4, B4, C5, B4, A4, G4. Measure 197 continues with eighth notes G4, F4, E4, D4, C4, B3, A3, G3. Measure 198 continues with eighth notes G3, F3, E3, D3, C3, B2, A2, G2.

199



Measures 199-201: Treble clef, 2/4 time. Measure 199 starts with a quarter note G4, followed by eighth notes A4, B4, C5, B4, A4, G4. Measure 200 continues with eighth notes G4, F4, E4, D4, C4, B3, A3, G3. Measure 201 continues with eighth notes G3, F3, E3, D3, C3, B2, A2, G2, ending with a whole note G2.

202



Measures 202-204: Treble clef, 2/4 time. Measure 202 starts with a quarter note G4, followed by eighth notes A4, B4, C5, B4, A4, G4. Measure 203 continues with eighth notes G4, F4, E4, D4, C4, B3, A3, G3. Measure 204 continues with eighth notes G3, F3, E3, D3, C3, B2, A2, G2.

205



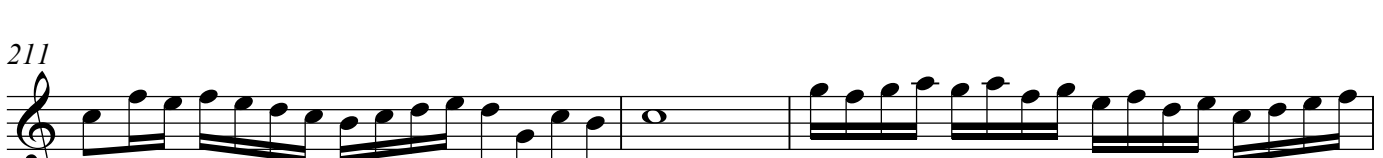
Measures 205-207: Treble clef, 2/4 time. Measure 205 starts with a quarter note G4, followed by eighth notes A4, B4, C5, B4, A4, G4. Measure 206 continues with eighth notes G4, F4, E4, D4, C4, B3, A3, G3. Measure 207 continues with eighth notes G3, F3, E3, D3, C3, B2, A2, G2, ending with a whole note G2.

208



Measures 208-210: Treble clef, 2/4 time. Measure 208 starts with a quarter note G4, followed by eighth notes A4, B4, C5, B4, A4, G4. Measure 209 continues with eighth notes G4, F4, E4, D4, C4, B3, A3, G3. Measure 210 continues with eighth notes G3, F3, E3, D3, C3, B2, A2, G2.

211



Measures 211-213: Treble clef, 2/4 time. Measure 211 starts with a quarter note G4, followed by eighth notes A4, B4, C5, B4, A4, G4. Measure 212 continues with eighth notes G4, F4, E4, D4, C4, B3, A3, G3. Measure 213 continues with eighth notes G3, F3, E3, D3, C3, B2, A2, G2.

214



Measures 214-216: Treble clef, 2/4 time. Measure 214 starts with a quarter note G4, followed by eighth notes A4, B4, C5, B4, A4, G4. Measure 215 continues with eighth notes G4, F4, E4, D4, C4, B3, A3, G3. Measure 216 continues with eighth notes G3, F3, E3, D3, C3, B2, A2, G2.

217



Measures 217-219: Treble clef, 2/4 time. Measure 217 starts with a quarter note G4, followed by eighth notes A4, B4, C5, B4, A4, G4. Measure 218 continues with eighth notes G4, F4, E4, D4, C4, B3, A3, G3. Measure 219 continues with eighth notes G3, F3, E3, D3, C3, B2, A2, G2, ending with a whole note G2.

220



Measures 220-222: Treble clef, 2/4 time. Measure 220 starts with a quarter note G4, followed by eighth notes A4, B4, C5, B4, A4, G4. Measure 221 continues with eighth notes G4, F4, E4, D4, C4, B3, A3, G3. Measure 222 continues with eighth notes G3, F3, E3, D3, C3, B2, A2, G2.

223



Measures 223-225: Treble clef, 2/4 time. Measure 223 starts with a quarter note G4, followed by eighth notes A4, B4, C5, B4, A4, G4. Measure 224 continues with eighth notes G4, F4, E4, D4, C4, B3, A3, G3. Measure 225 continues with eighth notes G3, F3, E3, D3, C3, B2, A2, G2, ending with a whole note G2.

226



Measures 226-228: Treble clef, 2/4 time. Measure 226 starts with a quarter note G4, followed by eighth notes A4, B4, C5, B4, A4, G4. Measure 227 continues with eighth notes G4, F4, E4, D4, C4, B3, A3, G3. Measure 228 continues with eighth notes G3, F3, E3, D3, C3, B2, A2, G2.

229



232



235

