



Bernard Dewagtere

France, SIN LE NOBLE

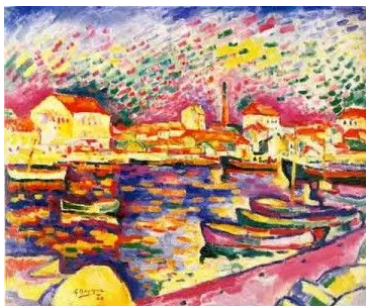
Au matin (Peer Gynt - Suite No 1, op. 46) Grieg, Edvard

A propos de l'artiste

Docteur en musicologie, chef d'orchestre et compositeur.
Compositions et arrangements de toutes époques, dans tous les styles ou genres musicaux et pour n'importe quelles formations instrumentales ou vocales.

Qualification : Docteur en Musicologie
Sociétaire : SACEM - Code IPI artiste : 342990
Page artiste : https://www.free-scores.com/partitions_gratuites_bernard-dewagtere.htm

A propos de la pièce



Titre : Au matin
[Peer Gynt - Suite No 1, op. 46]
Compositeur : Grieg, Edvard
Arrangeur : Dewagtere, Bernard
Droit d'auteur : Copyright © Dewagtere, Bernard
Instrumentation : Trombone ou tuba ou euphonium, piano
Style : Romantique
Commentaire : Suite n° 1, op. 46 (1888) 1. Au matin 2. La mort d'Åse 3. Danse d'Anitra 4. Dans l'ancre du roi de la montagne .
Suite n° 2 (1891) 1. Lamentations d'Ingrid 2. Danse arabe
3. Retour de Peer Gynt 4. Chanson de Solveig

Bernard Dewagtere sur [free-scores.com](https://www.free-scores.com)

LICENCE

Cette partition nécessite une autorisation :
- pour les représentations publiques
- pour l'utilisation par les professeurs

S'acquies de cette licence sur :

<https://www.free-scores.com/licence-partition.php?partition=42631>



- écouter l'audio
- partager votre interprétation
- commenter la partition
- s'acquies de la licence
- contacter l'artiste

Interdiction de diffusion sur d'autres sites Web.

Morning Mood - Au matin

Peer Gynt - Suite No 1, op. 46

Edvard Grieg (1888)

Transc. : Bernard Dewagtere

Allegretto pastorale $\text{♩} = 60$

Trombone
or Tuba
or Euphonium

Musical score for Trombone or Tuba or Euphonium and Piano, measures 1-5. The Trombone part is in bass clef with a key signature of one sharp (F#) and a 6/8 time signature. It begins with a rest and then plays a melodic line starting at measure 5, marked *p*. The Piano part is in treble and bass clefs with the same key signature and time signature. It begins with a melodic line in the right hand, marked *p dolce*, and a harmonic accompaniment in the left hand.

Musical score for Piano, measures 6-10. The Piano part continues from measure 5. The right hand plays a melodic line with a slur over measures 6-8, and then a more active line in measures 9-10. The left hand provides a steady harmonic accompaniment. Dynamics include *p* and *pp*.

Musical score for Piano, measures 11-15. The Piano part continues from measure 10. The right hand plays a melodic line with a slur over measures 11-13, and then a more active line in measures 14-15. The left hand provides a steady harmonic accompaniment. Dynamics include *p* and *pp*.

Morning Mood - Au matin

2
16

Pno

16

cresc. *f*

22

Pno

22

27

Pno

più f *più f*

31

Pno

p *ff* *p* *ff* *p*

31

p *ff* *p* *ff* *p*

Morning Mood - Au matin

The image displays a piano score for the piece "Morning Mood - Au matin". The score is organized into four systems, each containing a bass clef staff and a grand staff (treble and bass clefs). Measure numbers 36, 39, 43, and 46 are indicated at the beginning of their respective systems. The music features a variety of dynamics, including piano (*p*), fortissimo (*ff*), and mezzo-forte (*mf*), along with performance directions such as *molto* and *dim. e tranquillo*. The notation includes slurs, accents, and dynamic hairpins. A fermata is present at the end of the piece in measure 46. The key signature is one sharp (F#).

Morning Mood - Au matin

49

Piano score for measures 49-51. The bass line features a continuous eighth-note pattern with slurs. The treble line has a sparse melody with rests. Dynamics include *mf* and *p*.

52

Piano score for measures 52-54. The bass line continues with eighth notes. The treble line has a sparse melody. Dynamics include *p* and *dim. e tranquillo*.

55

Piano score for measures 55-58. The bass line continues with eighth notes. The treble line has a sparse melody. Dynamics include *mp* and *p*.

59

Piano score for measures 59-62. The bass line continues with eighth notes. The treble line has a sparse melody. Dynamics include *pp* and *mp*.

Morning Mood - Au matin

63 *tranquillo* *p* 5

Pno

70 *p*

Pno

72 *dim.* *p* *più tranquillo*

Pno

80 *poco rit.* *pp*

Pno

The image shows a piano score for 'Morning Mood - Au matin'. It consists of four systems of music, each with a right-hand and left-hand part. The first system starts at measure 63 with a 'tranquillo' tempo marking and a piano (p) dynamic. The second system starts at measure 70. The third system starts at measure 72 and includes 'dim.' (diminuendo) and 'più tranquillo' markings. The fourth system starts at measure 80 and includes a 'poco rit.' (poco ritardando) marking and a pianissimo (pp) dynamic. The score features various musical notations such as slurs, trills, and dynamic markings.