

# Jacob Handl

---

## Egredietur Virga

*A,T,T,B Recorders*



# Egredietur Virga

Jacob Handl  
1550 - 1591

5

10

15

20

25

System 1: Measures 25-29. This system contains the first five measures of the piece. It features a four-staff arrangement with a soprano, alto, and tenor line in the upper two staves, and a bass line in the lower two staves. The music is in a minor key and includes various rhythmic values such as quarter, eighth, and sixteenth notes, along with rests and accidentals.

30

System 2: Measures 30-34. This system contains the next five measures. The musical texture continues with similar rhythmic patterns and melodic lines across the four staves. A fermata is present over the final measure of this system.

35

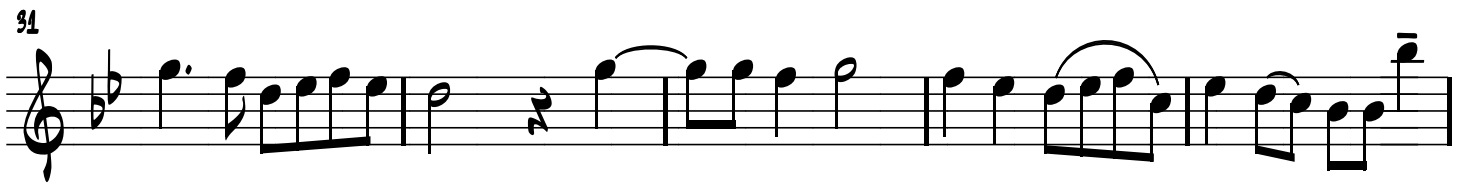
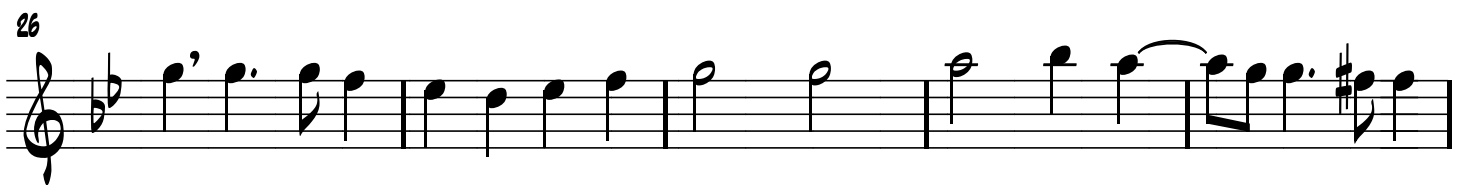
System 3: Measures 35-39. This system contains the next five measures. The music shows more complex rhythmic figures, including sixteenth-note runs and rests. The four-staff structure remains consistent.

System 4: Measures 40-43. This system contains the final four measures of the page. It concludes with a double bar line. The notation includes various note values and rests, maintaining the four-staff format.

# Egredietur Virga

## ALTO 1 (PART 1)

Jacob Handl  
1550 - 1591



# Egredietur Virga

## TENOR 1 (PART 2)

Jacob Handl  
1550 - 1591

5

2

10

15

20

25

30

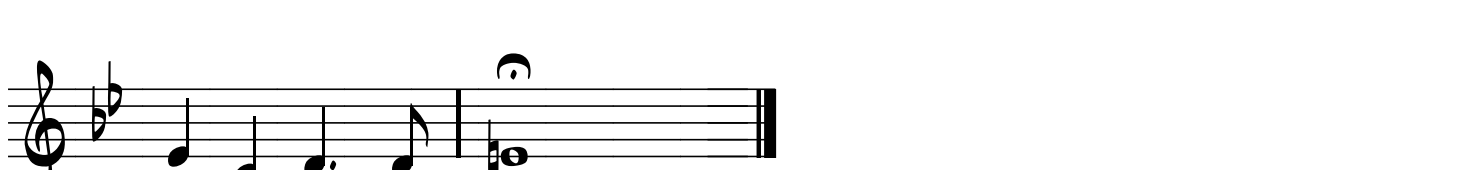
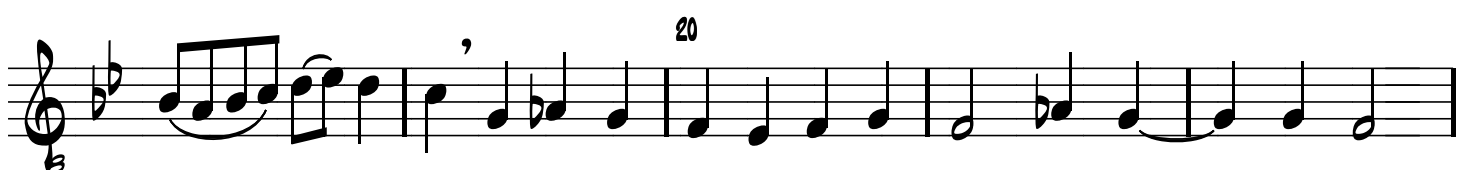
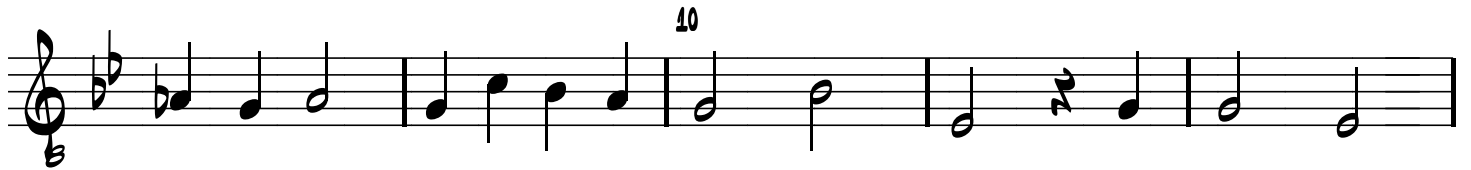
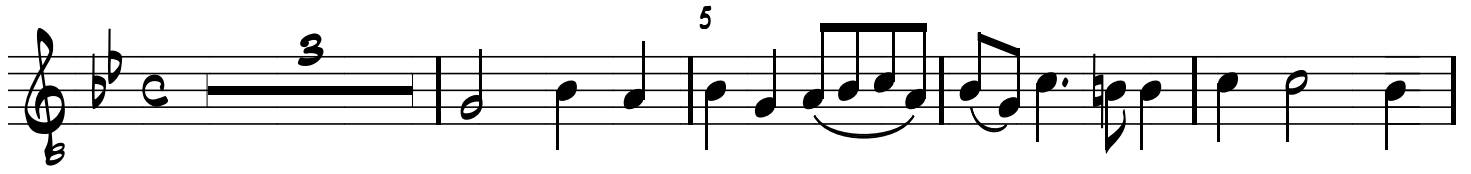
35

6

# Egredietur Virga

TENOR 2 (PART 3)

Jacob Handl  
1550 - 1591



# Egredietur Virga

## BASS (PART 4)

Jacob Handl  
1550 - 1591

