



Richard Kearns

Irlande, Ballybofey

CORRIB ROAD

A propos de l'artiste

Due to loss of use of hands I will be unable to transpose, arrange or otherwise modify my music in here. Further compositions will be very very slow in appearing here.....Thanks for all the support.

Teachers and students may use my music and arrangements to study and practice without further adieu.....All public performances must seek permission first.

THANKS FOR THE DONATIONS.

They keep me going.

Page artiste : https://www.free-scores.com/partitions_gratuites_guiriell.htm

A propos de la pièce



Titre : CORRIB ROAD
Compositeur : Kearns, Richard
Arrangeur : Kearns, Richard
Droit d'auteur : Richard Kearns © All rights reserved
Editeur : Kearns, Richard
Instrumentation : Quatuor à cordes
Style : Classique

Richard Kearns sur [free-scores.com](https://www.free-scores.com)



Cette partition ne fait pas partie du domaine public. Merci de contacter l'artiste pour toute utilisation hors du cadre privé.



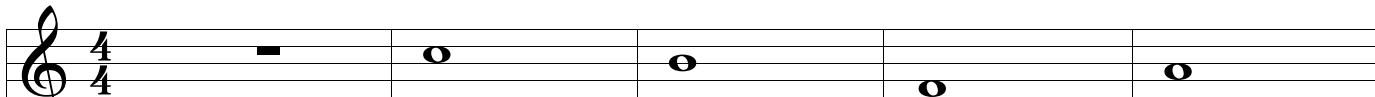
- écouter l'audio
- partager votre interprétation
- commenter la partition
- contacter l'artiste

Corrib Road

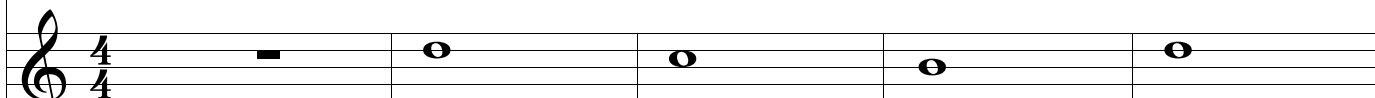
Richard Kearns
Copyright © 2010 Richard Kearns

Con Tristesa

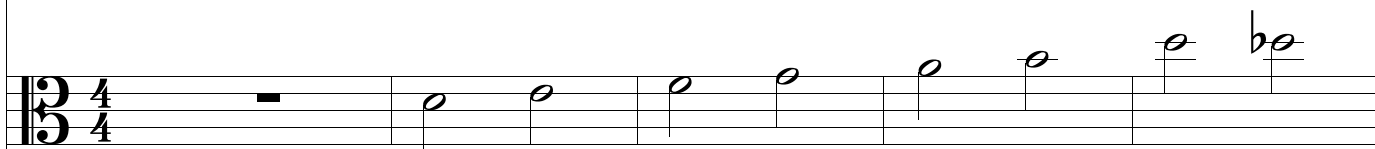
1



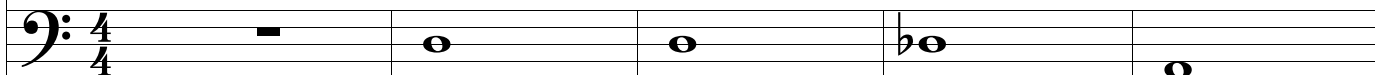
1: 1st
Violin



2: 2nd
Violin



3: Viola



4: Cello

6

1: 1st Violin

2: 2nd Violin

3: Viola

4: Cello

Detailed description: This system contains measures 6 through 9. The 1st Violin part (treble clef) has a half rest in measure 6, followed by a half note G4 in measure 7, a half note F4 in measure 8, and a half note E4 in measure 9. The 2nd Violin part (treble clef) has a half rest in measure 6, followed by a half note G4 in measure 7, a half note F4 in measure 8, and a half note E4 in measure 9. The Viola part (alto clef) has a half note G3 in measure 6, followed by a half note A3 in measure 7, a half note B3 in measure 8, and a half note C4 in measure 9. The Cello part (bass clef) has a half note G2 in measure 6, followed by a half note A2 in measure 7, a half note B2 in measure 8, and a half note C3 in measure 9.

10

1: 1st Violin

2: 2nd Violin

3: Viola

4: Cello

Detailed description: This system contains measures 10 through 13. The 1st Violin part (treble clef) has a quarter note G4 in measure 10, followed by a quarter note A4 in measure 11, a quarter note B4 in measure 12, and a quarter note C5 in measure 13. The 2nd Violin part (treble clef) has a quarter note G4 in measure 10, followed by a quarter note A4 in measure 11, a quarter note B4 in measure 12, and a quarter note C5 in measure 13. The Viola part (alto clef) has a quarter note G3 in measure 10, followed by a quarter note A3 in measure 11, a quarter note B3 in measure 12, and a quarter note C4 in measure 13. The Cello part (bass clef) has a quarter note G2 in measure 10, followed by a quarter note A2 in measure 11, a quarter note B2 in measure 12, and a quarter note C3 in measure 13.

13

1: 1st Violin

2: 2nd Violin

3: Viola

4: Cello

18

1: 1st Violin

2: 2nd Violin

3: Viola

4: Cello

22

1: 1st Violin

2: 2nd Violin

3: Viola

4: Cello

Detailed description: This block contains the first four measures of the musical score for measures 22 and 23. The 1st Violin part (top staff) has a treble clef and a key signature of one flat. It plays a sequence of quarter notes: G4, A4, Bb4, and G4. The 2nd Violin part (second staff) has a treble clef and plays a sequence of quarter notes: G4, A4, B4, C5, G4, A4, B4, and C5. The Viola part (third staff) has an alto clef and plays a sequence of quarter notes: G3, A3, B3, and C4. The Cello part (bottom staff) has a bass clef and plays a sequence of quarter notes: G2, A2, B2, and C3.

23

1: 1st Violin

2: 2nd Violin

3: Viola

4: Cello

Detailed description: This block contains the last four measures of the musical score for measures 23 and 24. The 1st Violin part (top staff) has a treble clef and a key signature of one flat. It features two triplet markings over the first two measures. The 2nd Violin part (second staff) has a treble clef and a key signature of one flat, also featuring two triplet markings. The Viola part (third staff) has an alto clef and a key signature of one flat, featuring four triplet markings. The Cello part (bottom staff) has a bass clef and a key signature of one flat, featuring four triplet markings.

25

1: 1st Violin

2: 2nd Violin

3: Viola

4: Cello

30

1: 1st Violin

2: 2nd Violin

3: Viola

4: Cello

35

Musical staff for 1st Violin, measures 35-38. The staff is in treble clef with a key signature of two sharps (F# and C#). Measure 35 contains a whole rest. Measure 36 begins with a double bar line and a key signature change to one sharp (F#), followed by a triplet of eighth notes (G4, A4, B4) and a whole note (B4). Measure 37 contains a whole note (B4). Measure 38 contains a whole note (B4).

1: 1st Violin

Musical staff for 2nd Violin, measures 35-38. The staff is in treble clef with a key signature of two sharps (F# and C#). Measure 35 contains a triplet of eighth notes (G4, A4, B4) and a whole note (B4). Measure 36 contains a triplet of eighth notes (G4, A4, B4) and a whole note (B4). Measure 37 contains a triplet of eighth notes (G4, A4, B4) and a whole note (B4). Measure 38 contains a whole note (B4).

2: 2nd Violin

Musical staff for Viola, measures 35-38. The staff is in alto clef with a key signature of two sharps (F# and C#). Measure 35 contains a triplet of eighth notes (G4, A4, B4) and a whole note (B4). Measure 36 contains a triplet of eighth notes (G4, A4, B4) and a whole note (B4). Measure 37 contains a triplet of eighth notes (G4, A4, B4) and a whole note (B4). Measure 38 contains a whole note (B4).

3: Viola

Musical staff for Cello, measures 35-38. The staff is in bass clef with a key signature of two sharps (F# and C#). Measure 35 contains a whole rest. Measure 36 begins with a double bar line and a key signature change to one sharp (F#), followed by a triplet of eighth notes (G3, A3, B3) and a whole note (B3). Measure 37 contains a whole note (B3). Measure 38 contains a whole note (B3).

4: Cello

39

Musical staff for 1st Violin, measures 39-42. The staff is in treble clef with a key signature of one sharp (F#). Measure 39 contains a whole note (B4). Measure 40 contains a whole note (B4). Measure 41 contains a whole rest. Measure 42 contains a whole note (B4).

1: 1st Violin

Musical staff for 2nd Violin, measures 39-42. The staff is in treble clef with a key signature of one sharp (F#). Measure 39 contains a whole note (B4). Measure 40 contains a whole note (B4). Measure 41 contains a whole rest. Measure 42 contains a whole note (B4).

2: 2nd Violin

Musical staff for Viola, measures 39-42. The staff is in alto clef with a key signature of one sharp (F#). Measure 39 contains a whole note (B4). Measure 40 contains a whole note (B4). Measure 41 contains a whole note (B4). Measure 42 contains a whole note (B4).

3: Viola

Musical staff for Cello, measures 39-42. The staff is in bass clef with a key signature of one sharp (F#). Measure 39 contains a whole note (B3). Measure 40 contains a whole note (B3). Measure 41 contains a whole rest. Measure 42 contains a whole note (B3).

4: Cello

44

1: 1st Violin

2: 2nd Violin

3: Viola

4: Cello

Detailed description: This block contains the musical notation for measures 44, 45, and 46. It is arranged in four staves. The first staff is for the 1st Violin, the second for the 2nd Violin, the third for the Viola, and the fourth for the Cello. The music is in a key with one flat (B-flat) and a common time signature. Measure 44 features a half rest in the 1st Violin, followed by eighth-note patterns in the 2nd Violin, Viola, and Cello. Measure 45 continues with similar rhythmic patterns. Measure 46 shows a more complex rhythmic structure with sixteenth notes in the 1st Violin and eighth notes in the other parts.

47

1: 1st Violin

2: 2nd Violin

3: Viola

4: Cello

Detailed description: This block contains the musical notation for measures 47, 48, 49, 50, 51, and 52. It is arranged in four staves. The first staff is for the 1st Violin, the second for the 2nd Violin, the third for the Viola, and the fourth for the Cello. The music is in a key with one flat (B-flat) and a common time signature. Measures 47-52 are characterized by a slower, more sustained melodic line, primarily using half notes and whole notes across all parts.

53

1: Ist Violin

2: 2nd Violin

3: Viola

4: Cello

57

1: Ist Violin

2: 2nd Violin

3: Viola

4: Cello

62

1: 1st Violin

2: 2nd Violin

3: Viola

4: Cello

Detailed description of the musical score: The score consists of four staves. The first two staves are for Violin 1 and Violin 2, both in treble clef. The third staff is for Viola, in bass clef. The fourth staff is for Cello, in bass clef. The key signature is two sharps (F# and C#). The time signature is not explicitly shown but appears to be 4/4 based on the note values. Measure 62: Violin 1 has eighth notes (D5, E5, F#5) with a triplet bracket. Violin 2 has a whole note (D4). Viola has eighth notes (D3, E3, F#3) with a triplet bracket. Cello has a whole note (D2). Measure 63: Violin 1 has eighth notes (G5, A5, B5) with a triplet bracket. Violin 2 has a whole note (E4). Viola has eighth notes (G3, A3, B3) with a triplet bracket. Cello has a whole note (E2). Measure 64: Violin 1 has eighth notes (C6, B5, A5) with a triplet bracket. Violin 2 has eighth notes (G4, A4, B4) with a triplet bracket. Viola has eighth notes (C4, B3, A3) with a triplet bracket. Cello has eighth notes (G2, A2, B2) with a triplet bracket. Measure 65: Violin 1 has a whole note (D5). Violin 2 has a whole note (D4). Viola has a whole note (D3). Cello has a whole note (D2).