



Richard Kearns

Irlande, Ballybofey

POPSICLE

A propos de l'artiste

Due to loss of use of hands I will be unable to transpose, arrange or otherwise modify my music in here. Further compositions will be very very slow in appearing here.....Thanks for all the support.

Teachers and students may use my music and arrangements to study and practice without further adieu.....All public performances must seek permission first.

THANKS FOR THE DONATIONS.
They keep me going.

Page artiste : https://www.free-scores.com/partitions_gratuites_guiriel.htm

A propos de la pièce



Titre : POPSICLE
Compositeur : Kearns, Richard
Arrangeur : Kearns, Richard
Droit d'auteur : Richard Kearns © All rights reserved
Editeur : Kearns, Richard
Instrumentation : 4 clarinettes (quatuor)
Style : Classique

Richard Kearns sur [free-scores.com](https://www.free-scores.com)



Cette partition ne fait pas partie du domaine public. Merci de contacter l'artiste pour toute utilisation hors du cadre privé.



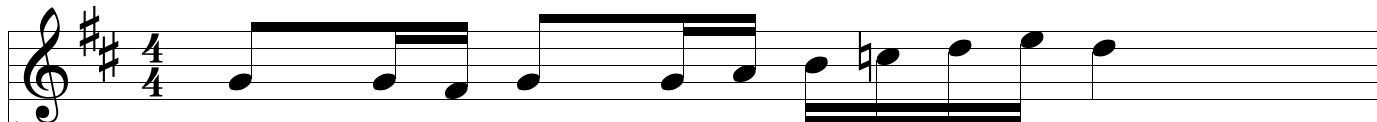
- écouter l'audio
- partager votre interprétation
- commenter la partition
- contacter l'artiste

Popsicle

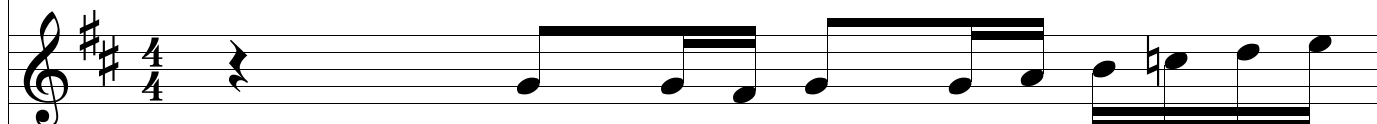
Richard Kearns
Copyright © 2010 Richard Kearns

Con Resaca

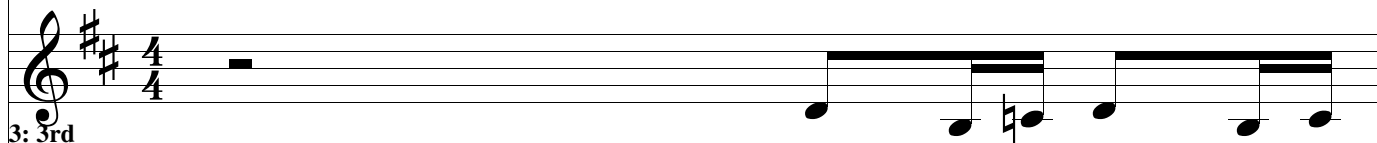
1



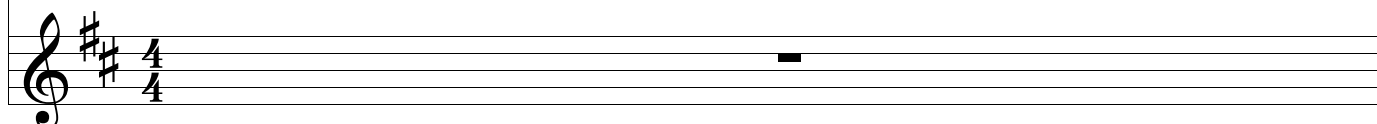
1: 1st
Clarinet



2: 2nd
Clarinet



3: 3rd
Clarinet



4: Bass
Clarinet

2

1: 1st Clarinet

2: 2nd Clarinet

3: 3rd Clarinet

4: Bass Clarinet

Detailed description: This block contains the musical notation for measures 2, 3, and 4 for four clarinet parts. The key signature is two sharps (F# and C#). The notation is as follows:
- **1: 1st Clarinet:** Measures 2-4 contain eighth-note patterns. Measure 2: G4, A4, B4, A4, G4. Measure 3: G4, A4, B4, A4, G4. Measure 4: G4, A4, B4, A4, G4.
- **2: 2nd Clarinet:** Measures 2-4 contain eighth-note patterns. Measure 2: G4, A4, B4, A4, G4. Measure 3: G4, A4, B4, A4, G4. Measure 4: G4, A4, B4, A4, G4.
- **3: 3rd Clarinet:** Measures 2-4 contain eighth-note patterns. Measure 2: G4, A4, B4, A4, G4. Measure 3: G4, A4, B4, A4, G4. Measure 4: G4, A4, B4, A4, G4.
- **4: Bass Clarinet:** Measures 2-4 contain eighth-note patterns. Measure 2: G4, A4, B4, A4, G4. Measure 3: G4, A4, B4, A4, G4. Measure 4: G4, A4, B4, A4, G4.

3

1: 1st Clarinet

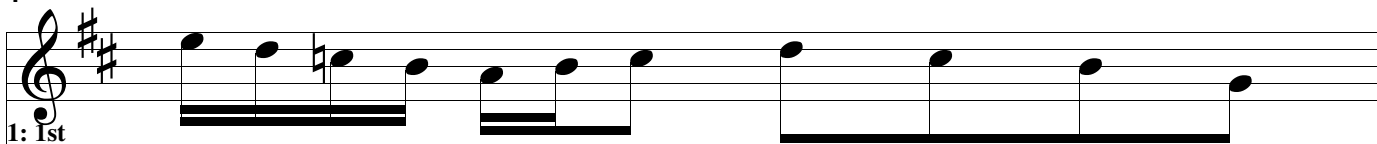
2: 2nd Clarinet

3: 3rd Clarinet

4: Bass Clarinet

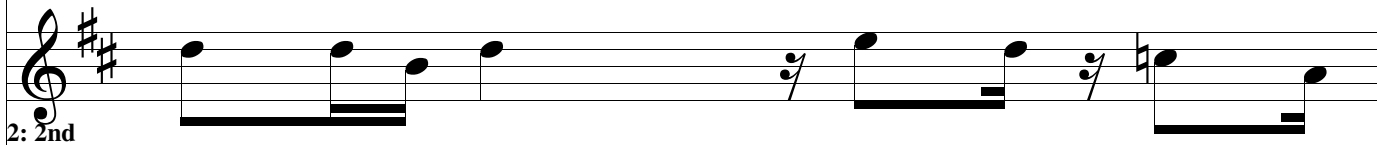
Detailed description: This block contains the musical notation for measures 3, 4, and 5 for four clarinet parts. The key signature is two sharps (F# and C#). The notation is as follows:
- **1: 1st Clarinet:** Measures 3-5 contain eighth-note patterns. Measure 3: G4, A4, B4, A4, G4. Measure 4: G4, A4, B4, A4, G4. Measure 5: G4, A4, B4, A4, G4.
- **2: 2nd Clarinet:** Measures 3-5 contain eighth-note patterns. Measure 3: G4, A4, B4, A4, G4. Measure 4: G4, A4, B4, A4, G4. Measure 5: G4, A4, B4, A4, G4.
- **3: 3rd Clarinet:** Measures 3-5 contain eighth-note patterns. Measure 3: G4, A4, B4, A4, G4. Measure 4: G4, A4, B4, A4, G4. Measure 5: G4, A4, B4, A4, G4.
- **4: Bass Clarinet:** Measures 3-5 contain eighth-note patterns. Measure 3: G4, A4, B4, A4, G4. Measure 4: G4, A4, B4, A4, G4. Measure 5: G4, A4, B4, A4, G4.

4



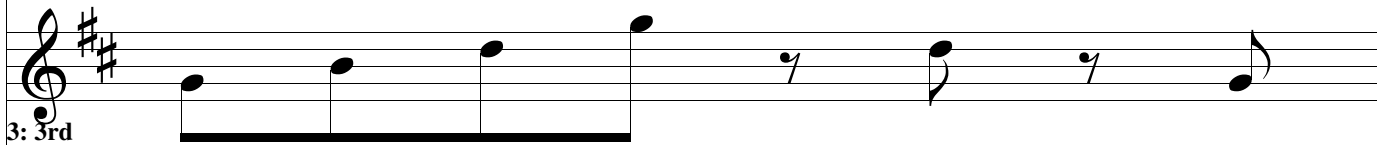
1: 1st Clarinet

Musical staff for the 1st Clarinet part, starting with a treble clef and a key signature of two sharps (F# and C#). The notation includes quarter notes, eighth notes, and a half note.



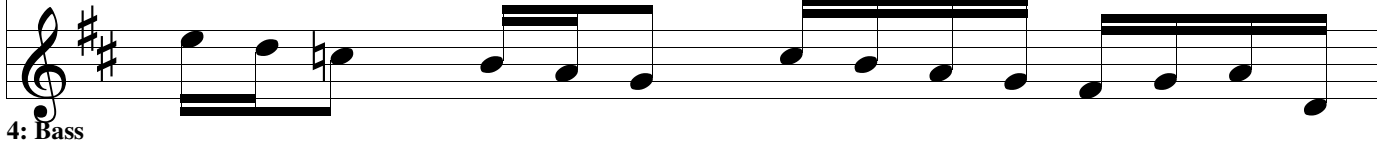
2: 2nd Clarinet

Musical staff for the 2nd Clarinet part, starting with a treble clef and a key signature of two sharps. The notation includes quarter notes, eighth notes, and a half note.



3: 3rd Clarinet

Musical staff for the 3rd Clarinet part, starting with a treble clef and a key signature of two sharps. The notation includes quarter notes, eighth notes, and a half note.



4: Bass Clarinet

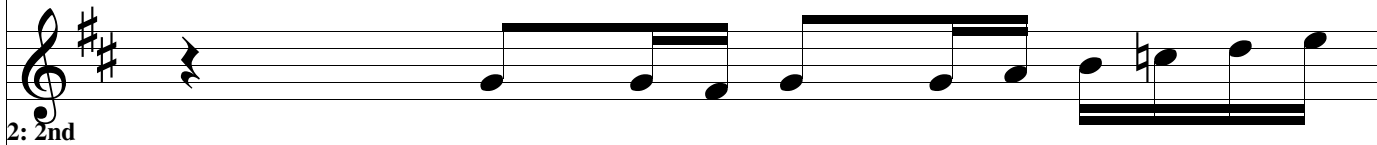
Musical staff for the Bass Clarinet part, starting with a treble clef and a key signature of two sharps. The notation includes quarter notes, eighth notes, and a half note.

5



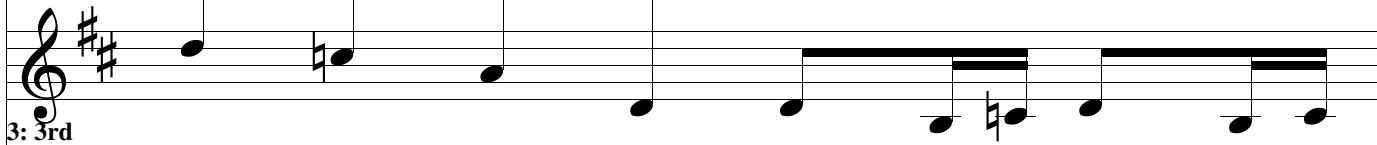
1: 1st Clarinet

Musical staff for the 1st Clarinet part, starting with a treble clef and a key signature of two sharps. The notation includes quarter notes, eighth notes, and a half note.



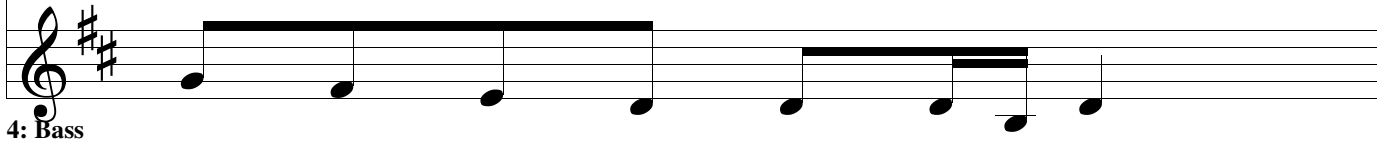
2: 2nd Clarinet

Musical staff for the 2nd Clarinet part, starting with a treble clef and a key signature of two sharps. The notation includes quarter notes, eighth notes, and a half note.



3: 3rd Clarinet

Musical staff for the 3rd Clarinet part, starting with a treble clef and a key signature of two sharps. The notation includes quarter notes, eighth notes, and a half note.



4: Bass Clarinet

Musical staff for the Bass Clarinet part, starting with a treble clef and a key signature of two sharps. The notation includes quarter notes, eighth notes, and a half note.

6

1: 1st Clarinet

2: 2nd Clarinet

3: 3rd Clarinet

4: Bass Clarinet

Detailed description: This block contains the first four staves of a musical system for measures 6 and 7. The key signature is two sharps (F# and C#). The first staff (1st Clarinet) has a melodic line with eighth notes and a triplet of eighth notes. The second staff (2nd Clarinet) has a similar melodic line. The third staff (3rd Clarinet) has a melodic line with a triplet of eighth notes. The fourth staff (Bass Clarinet) has a melodic line with eighth notes and a triplet of eighth notes.

7

1: 1st Clarinet

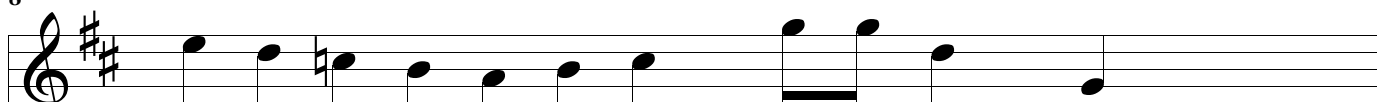
2: 2nd Clarinet

3: 3rd Clarinet

4: Bass Clarinet

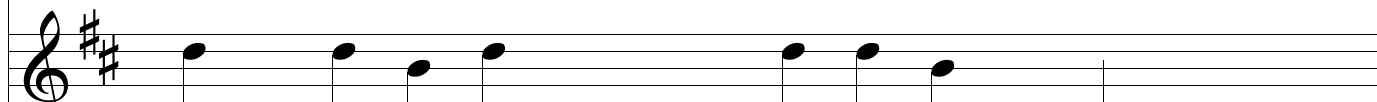
Detailed description: This block contains the last four staves of a musical system for measures 6 and 7. The key signature is two sharps (F# and C#). The first staff (1st Clarinet) has a melodic line with eighth notes. The second staff (2nd Clarinet) has a melodic line with eighth notes and a triplet of eighth notes. The third staff (3rd Clarinet) has a melodic line with eighth notes and a triplet of eighth notes. The fourth staff (Bass Clarinet) has a melodic line with eighth notes and a triplet of eighth notes.

8



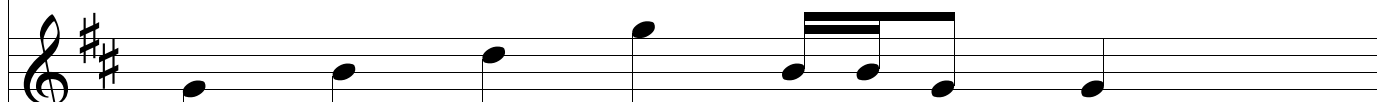
1: 1st
Clarinet

Musical staff for the 1st Clarinet in measure 8. The staff is in treble clef with a key signature of two sharps (F# and C#). The melody consists of quarter notes: G4, A4, B4, A4, G4, F#4, E4, D4, C#4, B3, A3, G3.



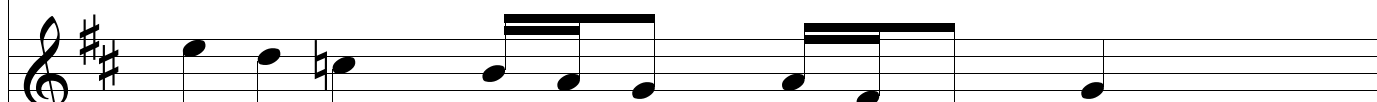
2: 2nd
Clarinet

Musical staff for the 2nd Clarinet in measure 8. The staff is in treble clef with a key signature of two sharps (F# and C#). The melody consists of quarter notes: G4, A4, B4, A4, G4, F#4, E4, D4, C#4, B3, A3, G3.



3: 3rd
Clarinet


Musical staff for the 3rd Clarinet in measure 8. The staff is in treble clef with a key signature of two sharps (F# and C#). The melody consists of quarter notes: G4, A4, B4, A4, G4, F#4, E4, D4, C#4, B3, A3, G3.



4: Bass
Clarinet


Musical staff for the Bass Clarinet in measure 8. The staff is in treble clef with a key signature of two sharps (F# and C#). The melody consists of quarter notes: G4, A4, B4, A4, G4, F#4, E4, D4, C#4, B3, A3, G3.

9



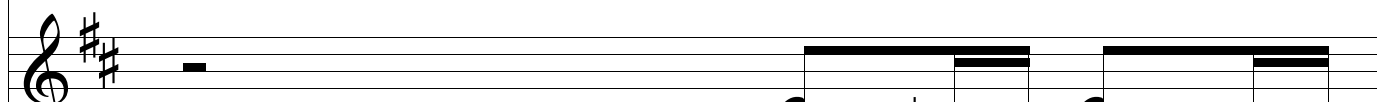
1: 1st
Clarinet

Musical staff for the 1st Clarinet in measure 9. The staff is in treble clef with a key signature of two sharps (F# and C#). The melody consists of quarter notes: G4, A4, B4, A4, G4, F#4, E4, D4, C#4, B3, A3, G3.



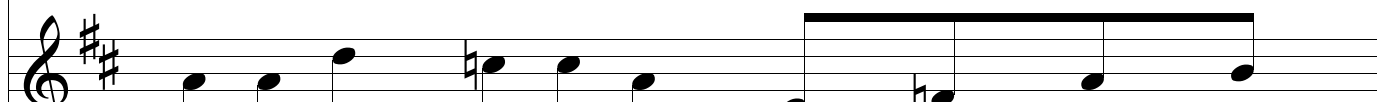
2: 2nd
Clarinet

Musical staff for the 2nd Clarinet in measure 9. The staff is in treble clef with a key signature of two sharps (F# and C#). The melody consists of quarter notes: G4, A4, B4, A4, G4, F#4, E4, D4, C#4, B3, A3, G3.



3: 3rd
Clarinet

Musical staff for the 3rd Clarinet in measure 9. The staff is in treble clef with a key signature of two sharps (F# and C#). The melody consists of quarter notes: G4, A4, B4, A4, G4, F#4, E4, D4, C#4, B3, A3, G3.



4: Bass
Clarinet

Musical staff for the Bass Clarinet in measure 9. The staff is in treble clef with a key signature of two sharps (F# and C#). The melody consists of quarter notes: G4, A4, B4, A4, G4, F#4, E4, D4, C#4, B3, A3, G3.

10

1: 1st Clarinet

2: 2nd Clarinet

3: 3rd Clarinet

4: Bass Clarinet

Detailed description: This block contains the first four staves of a musical score for measures 10 and 11. The music is in treble clef with a key signature of two sharps (F# and C#). The first staff (1st Clarinet) plays a melodic line with eighth and sixteenth notes. The second staff (2nd Clarinet) plays a similar line but with some rests. The third staff (3rd Clarinet) has a more complex line with some triplets. The fourth staff (Bass Clarinet) plays a steady eighth-note accompaniment.

11

1: 1st Clarinet


2: 2nd Clarinet

3: 3rd Clarinet

4: Bass Clarinet

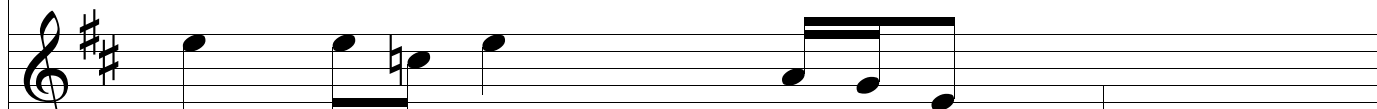
Detailed description: This block contains the last four staves of a musical score for measures 10 and 11. The music is in treble clef with a key signature of two sharps (F# and C#). The first staff (1st Clarinet) continues the melodic line. The second staff (2nd Clarinet) has a more active line with eighth notes. The third staff (3rd Clarinet) has a line with some rests and eighth notes. The fourth staff (Bass Clarinet) continues the eighth-note accompaniment.

12



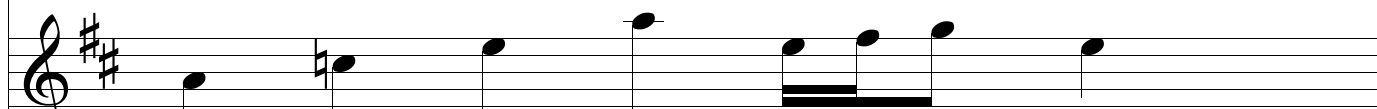
1: 1st
Clarinet

Musical staff for the 1st Clarinet in measure 12. The staff is in treble clef with a key signature of two sharps (F# and C#). The melody consists of eighth notes: F#4, G4, A4, B4, C5, B4, A4, G4, F#4, E4, D4, C4.



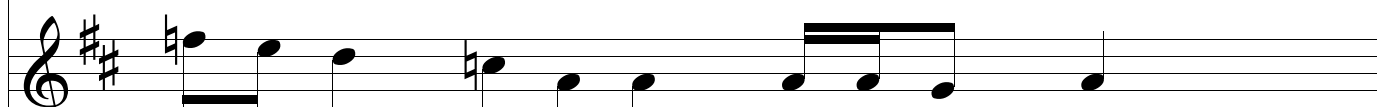
2: 2nd
Clarinet

Musical staff for the 2nd Clarinet in measure 12. The staff is in treble clef with a key signature of two sharps (F# and C#). The melody consists of eighth notes: F#4, G4, A4, B4, C5, B4, A4, G4, F#4, E4, D4, C4.



3: 3rd
Clarinet

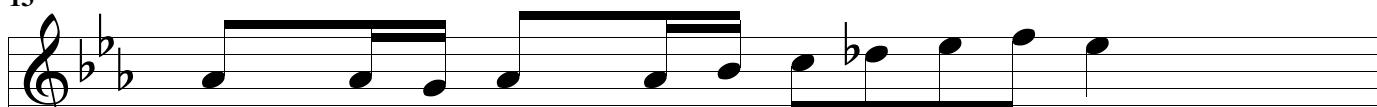
Musical staff for the 3rd Clarinet in measure 12. The staff is in treble clef with a key signature of two sharps (F# and C#). The melody consists of eighth notes: F#4, G4, A4, B4, C5, B4, A4, G4, F#4, E4, D4, C4.



4: Bass
Clarinet

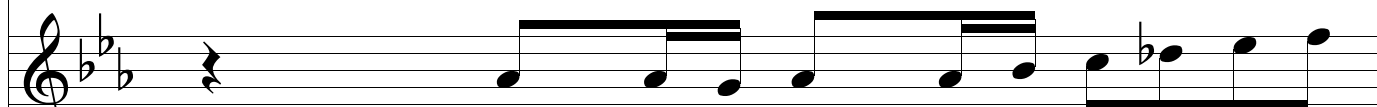
Musical staff for the Bass Clarinet in measure 12. The staff is in treble clef with a key signature of two sharps (F# and C#). The melody consists of eighth notes: F#4, G4, A4, B4, C5, B4, A4, G4, F#4, E4, D4, C4.

13



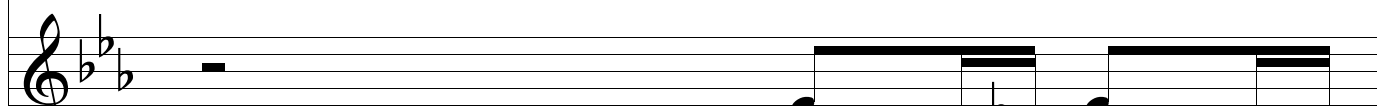
1: 1st
Clarinet

Musical staff for the 1st Clarinet in measure 13. The staff is in treble clef with a key signature of two flats (Bb and Eb). The melody consists of eighth notes: Bb4, C5, D5, Eb5, F5, Eb5, D5, C5, Bb4, Ab4, Gb4, F4.



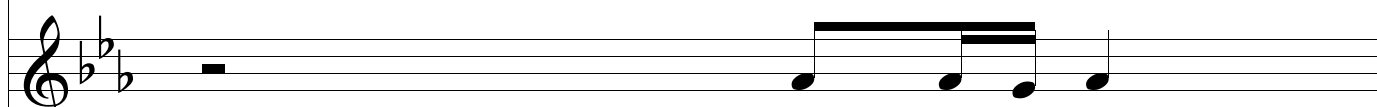
2: 2nd
Clarinet

Musical staff for the 2nd Clarinet in measure 13. The staff is in treble clef with a key signature of two flats (Bb and Eb). The melody consists of eighth notes: Bb4, C5, D5, Eb5, F5, Eb5, D5, C5, Bb4, Ab4, Gb4, F4.



3: 3rd
Clarinet

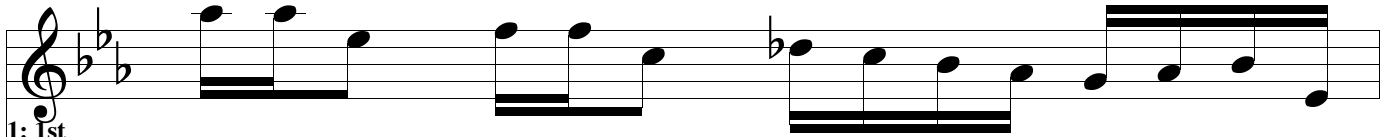
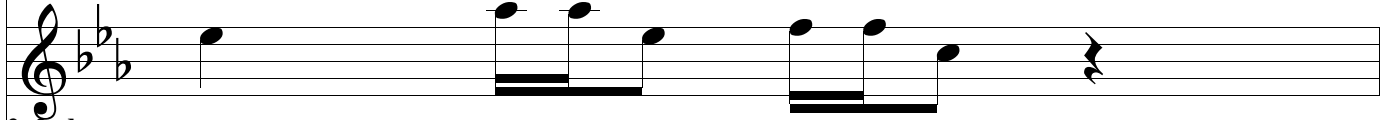
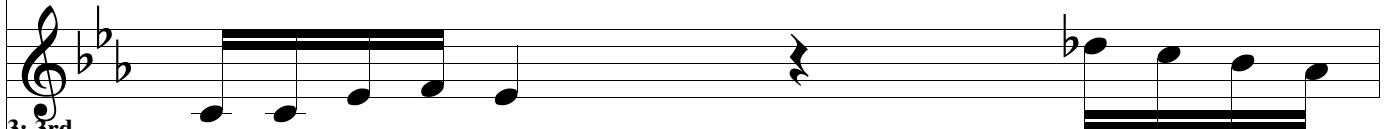
Musical staff for the 3rd Clarinet in measure 13. The staff is in treble clef with a key signature of two flats (Bb and Eb). The melody consists of eighth notes: Bb4, C5, D5, Eb5, F5, Eb5, D5, C5, Bb4, Ab4, Gb4, F4.



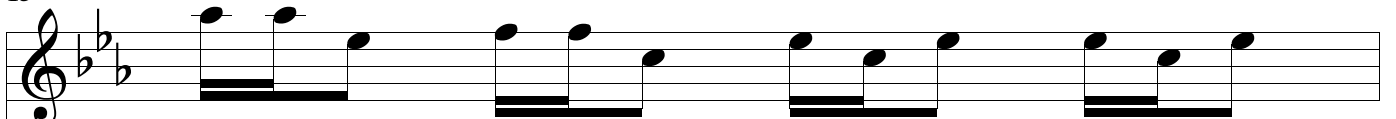
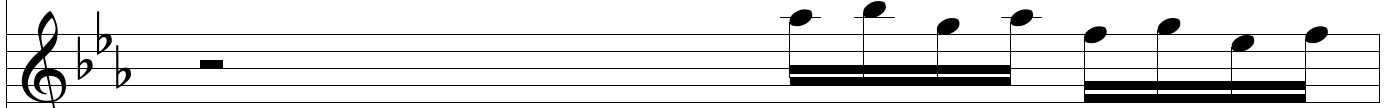
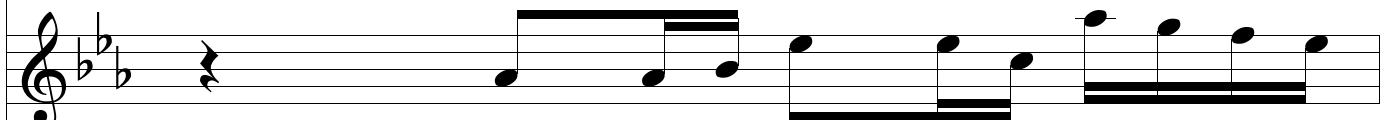
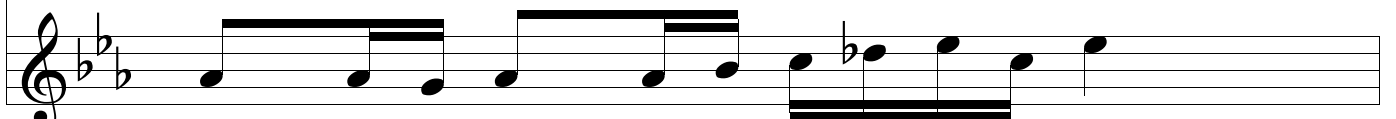
4: Bass
Clarinet

Musical staff for the Bass Clarinet in measure 13. The staff is in treble clef with a key signature of two flats (Bb and Eb). The melody consists of eighth notes: Bb4, C5, D5, Eb5, F5, Eb5, D5, C5, Bb4, Ab4, Gb4, F4.

14

1: 1st
Clarinet2: 2nd
Clarinet3: 3rd
Clarinet4: Bass
Clarinet

15

1: 1st
Clarinet2: 2nd
Clarinet3: 3rd
Clarinet4: Bass
Clarinet

16

Musical staff for the 1st Clarinet part, measures 16-17. The key signature is B-flat major (two flats). The staff contains a melodic line with eighth and quarter notes.

1: 1st
Clarinet

Musical staff for the 2nd Clarinet part, measures 16-17. The key signature is B-flat major. The staff contains a melodic line with eighth and quarter notes, including some rests.

2: 2nd
Clarinet

Musical staff for the 3rd Clarinet part, measures 16-17. The key signature is B-flat major. The staff contains a melodic line with quarter and eighth notes, including rests.

3: 3rd
Clarinet

Musical staff for the Bass Clarinet part, measures 16-17. The key signature is B-flat major. The staff contains a melodic line with eighth and quarter notes.

4: Bass
Clarinet

17

Musical staff for the 1st Clarinet part, measures 17-18. The key signature changes to D major (two sharps). The staff contains a melodic line with eighth and quarter notes.

1: 1st
Clarinet

Musical staff for the 2nd Clarinet part, measures 17-18. The key signature is D major. The staff contains a melodic line with eighth and quarter notes, including rests.

2: 2nd
Clarinet

Musical staff for the 3rd Clarinet part, measures 17-18. The key signature is D major. The staff contains a melodic line with quarter and eighth notes.

3: 3rd
Clarinet

Musical staff for the Bass Clarinet part, measures 17-18. The key signature is D major. The staff contains a melodic line with quarter and eighth notes.

4: Bass
Clarinet

18

1: 1st Clarinet

2: 2nd Clarinet

3: 3rd Clarinet

4: Bass Clarinet

Detailed description: This block contains the first four staves of a musical score for measures 18 and 19. The key signature is three sharps (F#, C#, G#) and the time signature is 4/4. The first staff (1: 1st Clarinet) plays a melodic line with eighth notes. The second staff (2: 2nd Clarinet) plays a similar line but with some rests. The third staff (3: 3rd Clarinet) has a more complex line with some sixteenth notes. The fourth staff (4: Bass Clarinet) plays a steady eighth-note accompaniment.

19

1: 1st Clarinet

2: 2nd Clarinet

3: 3rd Clarinet

4: Bass Clarinet

Detailed description: This block contains the last four staves of a musical score for measures 18 and 19. The key signature is three sharps (F#, C#, G#) and the time signature is 4/4. The first staff (1: 1st Clarinet) continues the melodic line. The second staff (2: 2nd Clarinet) has a long rest in measure 18 followed by a melodic line in measure 19. The third staff (3: 3rd Clarinet) has a rest in measure 18 followed by a melodic line in measure 19. The fourth staff (4: Bass Clarinet) continues the eighth-note accompaniment.

20

1: 1st Clarinet

Musical staff for the 1st Clarinet part at measure 20. The staff is in treble clef with a key signature of three sharps (F#, C#, G#). The melody consists of quarter notes: G4, A4, B4, C5, B4, A4, G4, F#4, E4, D4, C4.

1: 1st Clarinet

2: 2nd Clarinet

Musical staff for the 2nd Clarinet part at measure 20. The staff is in treble clef with a key signature of three sharps. The melody consists of quarter notes: G4, A4, B4, C5, B4, A4, G4, F#4, E4, D4, C4. There are fermatas over the notes G4 and C4.

2: 2nd Clarinet

3: 3rd Clarinet

Musical staff for the 3rd Clarinet part at measure 20. The staff is in treble clef with a key signature of three sharps. The melody consists of quarter notes: G4, A4, B4, C5, B4, A4, G4, F#4, E4, D4, C4. There are fermatas over the notes G4 and C4.

3: 3rd Clarinet

4: Bass Clarinet

Musical staff for the Bass Clarinet part at measure 20. The staff is in treble clef with a key signature of three sharps. The melody consists of quarter notes: G4, A4, B4, C5, B4, A4, G4, F#4, E4, D4, C4.

4: Bass Clarinet

21

1: 1st Clarinet

Musical staff for the 1st Clarinet part at measure 21. The staff is in treble clef with a key signature of three sharps. The melody consists of quarter notes: G4, A4, B4, C5, B4, A4, G4, F#4, E4, D4, C4. There is a fermata over the notes G4 and C4.

1: 1st Clarinet

2: 2nd Clarinet

Musical staff for the 2nd Clarinet part at measure 21. The staff is in treble clef with a key signature of three sharps. The melody consists of quarter notes: G4, A4, B4, C5, B4, A4, G4, F#4, E4, D4, C4. There is a fermata over the notes G4 and C4.

2: 2nd Clarinet

3: 3rd Clarinet

Musical staff for the 3rd Clarinet part at measure 21. The staff is in treble clef with a key signature of three sharps. The melody consists of quarter notes: G4, A4, B4, C5, B4, A4, G4, F#4, E4, D4, C4. There is a fermata over the notes G4 and C4.

3: 3rd Clarinet

4: Bass Clarinet

Musical staff for the Bass Clarinet part at measure 21. The staff is in treble clef with a key signature of three sharps. The melody consists of quarter notes: G4, A4, B4, C5, B4, A4, G4, F#4, E4, D4, C4.

4: Bass Clarinet

22

1: 1st Clarinet

2: 2nd Clarinet

3: 3rd Clarinet

4: Bass Clarinet

The score for measures 22-23 features four staves for clarinets. The key signature is two sharps (F# and C#). The first clarinet part (1st) plays a melodic line with eighth notes and quarter notes, including some beamed eighth notes. The second clarinet part (2nd) plays a similar melodic line, often in harmony with the first. The third clarinet part (3rd) provides harmonic support with chords and some melodic fragments. The fourth clarinet part (4: Bass Clarinet) plays a more rhythmic and harmonic accompaniment, often using beamed eighth notes and quarter notes.

23

1: 1st Clarinet

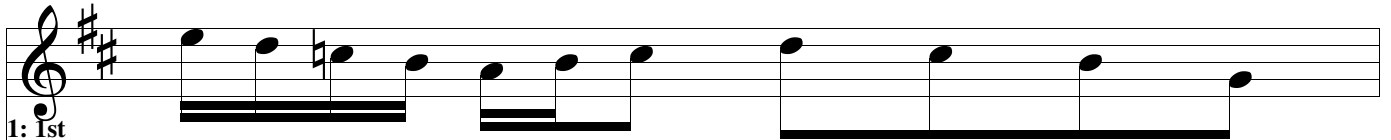
2: 2nd Clarinet

3: 3rd Clarinet

4: Bass Clarinet

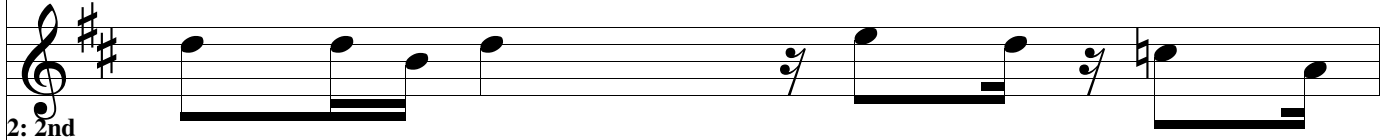
The score for measures 23-24 continues the four-part clarinet texture. The first clarinet part (1st) maintains its melodic role with eighth and quarter notes. The second clarinet part (2nd) has a more active role in measure 23, playing a melodic line, but becomes more rhythmic in measure 24. The third clarinet part (3rd) continues to provide harmonic support with chords and melodic fragments. The fourth clarinet part (4: Bass Clarinet) maintains its rhythmic and harmonic accompaniment, using beamed eighth notes and quarter notes.

24



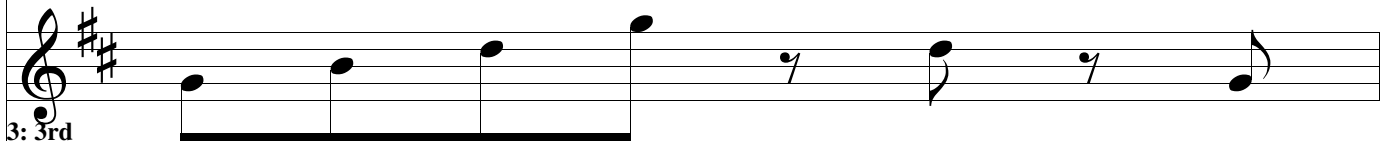
1: 1st Clarinet

Musical staff for the 1st Clarinet in measure 24. The staff is in treble clef with a key signature of two sharps (F# and C#). The melody consists of quarter notes: G4, A4, B4, C5, D5, E5, F#5, G5, A5, B5, C6, B5, A5, G5, F#5, E5, D5, C5, B4, A4, G4.



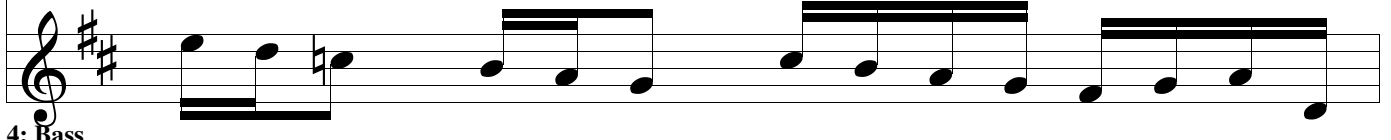
2: 2nd Clarinet

Musical staff for the 2nd Clarinet in measure 24. The staff is in treble clef with a key signature of two sharps. The melody consists of quarter notes: G4, A4, B4, C5, D5, E5, F#5, G5, A5, B5, C6, B5, A5, G5, F#5, E5, D5, C5, B4, A4, G4.



3: 3rd Clarinet


Musical staff for the 3rd Clarinet in measure 24. The staff is in treble clef with a key signature of two sharps. The melody consists of quarter notes: G4, A4, B4, C5, D5, E5, F#5, G5, A5, B5, C6, B5, A5, G5, F#5, E5, D5, C5, B4, A4, G4.



4: Bass Clarinet

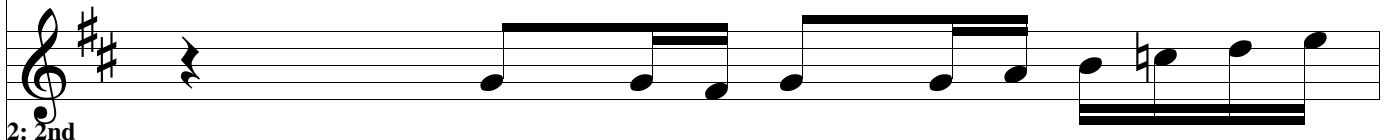
Musical staff for the Bass Clarinet in measure 24. The staff is in treble clef with a key signature of two sharps. The melody consists of quarter notes: G4, A4, B4, C5, D5, E5, F#5, G5, A5, B5, C6, B5, A5, G5, F#5, E5, D5, C5, B4, A4, G4.

25



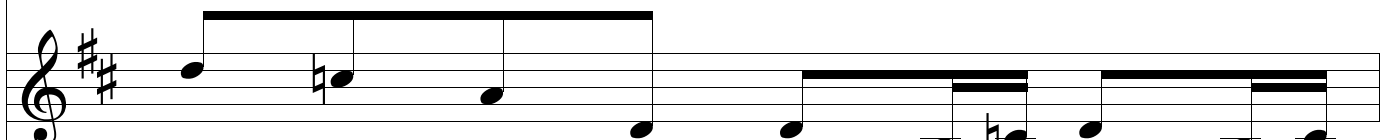
1: 1st Clarinet

Musical staff for the 1st Clarinet in measure 25. The staff is in treble clef with a key signature of two sharps. The melody consists of quarter notes: G4, A4, B4, C5, D5, E5, F#5, G5, A5, B5, C6, B5, A5, G5, F#5, E5, D5, C5, B4, A4, G4.



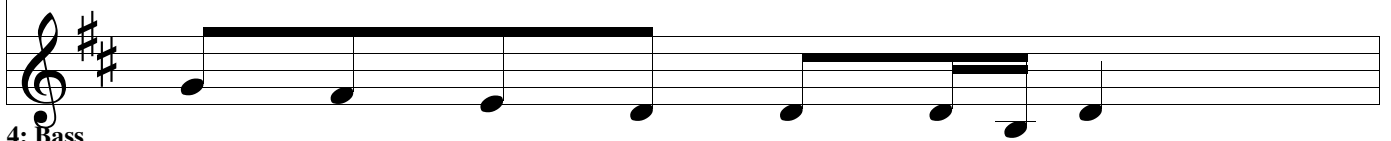
2: 2nd Clarinet

Musical staff for the 2nd Clarinet in measure 25. The staff is in treble clef with a key signature of two sharps. The melody consists of quarter notes: G4, A4, B4, C5, D5, E5, F#5, G5, A5, B5, C6, B5, A5, G5, F#5, E5, D5, C5, B4, A4, G4.



3: 3rd Clarinet

Musical staff for the 3rd Clarinet in measure 25. The staff is in treble clef with a key signature of two sharps. The melody consists of quarter notes: G4, A4, B4, C5, D5, E5, F#5, G5, A5, B5, C6, B5, A5, G5, F#5, E5, D5, C5, B4, A4, G4.



4: Bass Clarinet

Musical staff for the Bass Clarinet in measure 25. The staff is in treble clef with a key signature of two sharps. The melody consists of quarter notes: G4, A4, B4, C5, D5, E5, F#5, G5, A5, B5, C6, B5, A5, G5, F#5, E5, D5, C5, B4, A4, G4.

26

1: 1st Clarinet

2: 2nd Clarinet

3: 3rd Clarinet

4: Bass Clarinet

Detailed description: This block contains the first four staves of a musical score for measures 26 and 27. The key signature is two sharps (F# and C#). The first staff (1st Clarinet) starts with a quarter note G4, followed by quarter notes A4, B4, and C5, then a quarter rest, and finally eighth notes G4, A4, B4, and C5. The second staff (2nd Clarinet) has quarter notes G4, A4, B4, and C5, followed by quarter notes G4, A4, and B4, and ends with a quarter rest. The third staff (3rd Clarinet) has quarter notes G4, A4, B4, and C5, followed by a quarter rest, and then eighth notes G4, A4, B4, and C5. The fourth staff (Bass Clarinet) has quarter notes G4, A4, B4, and C5, followed by quarter notes G4, A4, and B4, and ends with quarter notes G4, A4, and B4.

27

1: 1st Clarinet

2: 2nd Clarinet

3: 3rd Clarinet

4: Bass Clarinet

Detailed description: This block contains the last four staves of a musical score for measures 27 and 28. The key signature is two sharps (F# and C#). The first staff (1st Clarinet) has quarter notes G4, A4, B4, and C5, followed by quarter notes G4, A4, and B4, and ends with quarter notes G4, A4, and B4. The second staff (2nd Clarinet) has quarter notes G4, A4, B4, and C5, followed by quarter notes G4, A4, and B4, and ends with quarter notes G4, A4, and B4. The third staff (3rd Clarinet) has a quarter rest, followed by quarter notes G4, A4, and B4, and ends with quarter notes G4, A4, and B4. The fourth staff (Bass Clarinet) has quarter notes G4, A4, B4, and C5, followed by quarter notes G4, A4, and B4, and ends with quarter notes G4, A4, and B4.

28

1: 1st Clarinet

Musical notation for the 1st Clarinet part in measure 28. The staff is in treble clef with a key signature of two sharps (F# and C#). The melody consists of eighth and quarter notes.

2: 2nd Clarinet

Musical notation for the 2nd Clarinet part in measure 28. The staff is in treble clef with a key signature of two sharps (F# and C#). The melody consists of eighth and quarter notes.

3: 3rd Clarinet

Musical notation for the 3rd Clarinet part in measure 28. The staff is in treble clef with a key signature of two sharps (F# and C#). The melody consists of quarter notes.

4: Bass Clarinet

Musical notation for the Bass Clarinet part in measure 28. The staff is in treble clef with a key signature of two sharps (F# and C#). The melody consists of eighth and quarter notes.

29

1: 1st Clarinet

Musical notation for the 1st Clarinet part in measure 29. The staff is in treble clef with a key signature of two sharps (F# and C#). The melody consists of eighth and quarter notes.

2: 2nd Clarinet

Musical notation for the 2nd Clarinet part in measure 29. The staff is in treble clef with a key signature of two sharps (F# and C#). The melody consists of eighth and quarter notes.

3: 3rd Clarinet

Musical notation for the 3rd Clarinet part in measure 29. The staff is in treble clef with a key signature of two sharps (F# and C#). The melody consists of quarter notes.

4: Bass Clarinet

Musical notation for the Bass Clarinet part in measure 29. The staff is in treble clef with a key signature of two sharps (F# and C#). The melody consists of eighth and quarter notes.

30

1: 1st Clarinet

2: 2nd Clarinet

3: 3rd Clarinet

4: Bass Clarinet

Detailed description: This block contains the first four staves of a musical score for measures 30 and 31. The key signature is two sharps (F# and C#), and the time signature is 4/4. The first staff (1: 1st Clarinet) has a melodic line with eighth and quarter notes. The second staff (2: 2nd Clarinet) has a similar melodic line. The third staff (3: 3rd Clarinet) has a more active line with eighth notes and rests. The fourth staff (4: Bass Clarinet) has a steady eighth-note accompaniment.

31

1: 1st Clarinet

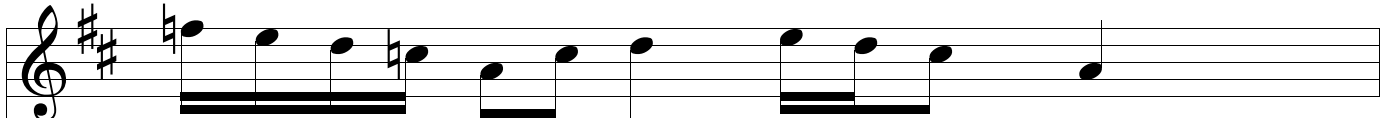
2: 2nd Clarinet

3: 3rd Clarinet

4: Bass Clarinet

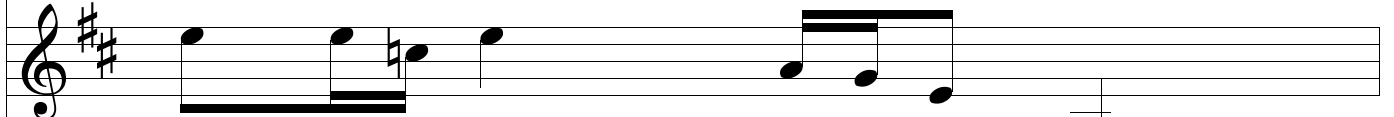
Detailed description: This block contains the last four staves of a musical score for measures 30 and 31. The key signature is two sharps (F# and C#), and the time signature is 4/4. The first staff (1: 1st Clarinet) continues the melodic line. The second staff (2: 2nd Clarinet) has a melodic line with some rests. The third staff (3: 3rd Clarinet) has a melodic line with eighth notes. The fourth staff (4: Bass Clarinet) has a steady eighth-note accompaniment.

32



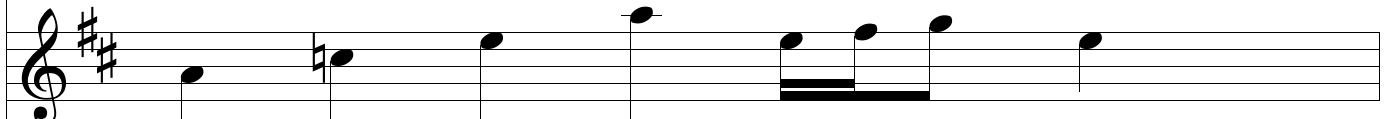
1: 1st
Clarinet

Musical staff for the 1st Clarinet part at measure 32. The staff is in treble clef with a key signature of two sharps (F# and C#). The melody consists of eighth and quarter notes, with some beamed eighth notes.



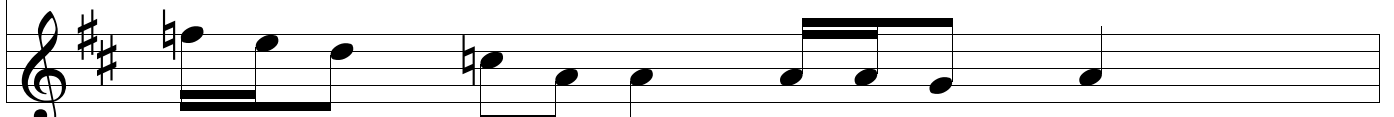
2: 2nd
Clarinet

Musical staff for the 2nd Clarinet part at measure 32. The staff is in treble clef with a key signature of two sharps. The melody consists of quarter and eighth notes, with some beamed eighth notes.



3: 3rd
Clarinet

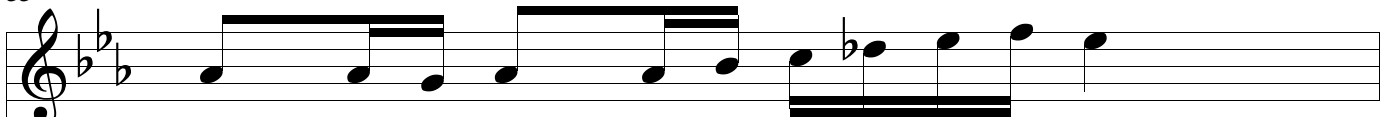
Musical staff for the 3rd Clarinet part at measure 32. The staff is in treble clef with a key signature of two sharps. The melody consists of quarter and eighth notes, with some beamed eighth notes.



4: Bass
Clarinet


Musical staff for the Bass Clarinet part at measure 32. The staff is in treble clef with a key signature of two sharps. The melody consists of quarter and eighth notes, with some beamed eighth notes.

33



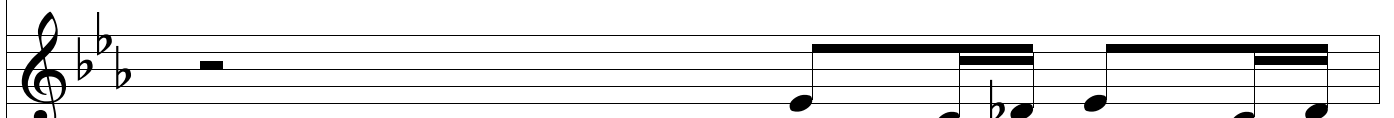
1: 1st
Clarinet

Musical staff for the 1st Clarinet part at measure 33. The staff is in treble clef with a key signature of two flats (Bb and Eb). The melody consists of quarter and eighth notes, with some beamed eighth notes.



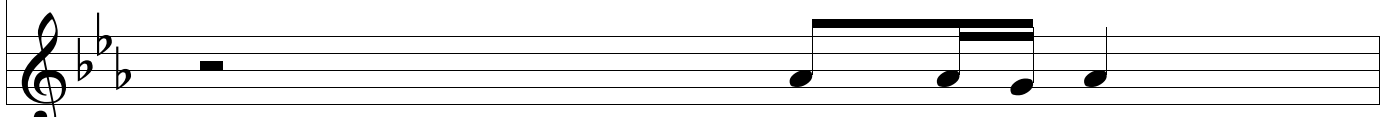
2: 2nd
Clarinet

Musical staff for the 2nd Clarinet part at measure 33. The staff is in treble clef with a key signature of two flats. The melody consists of quarter and eighth notes, with some beamed eighth notes.



3: 3rd
Clarinet

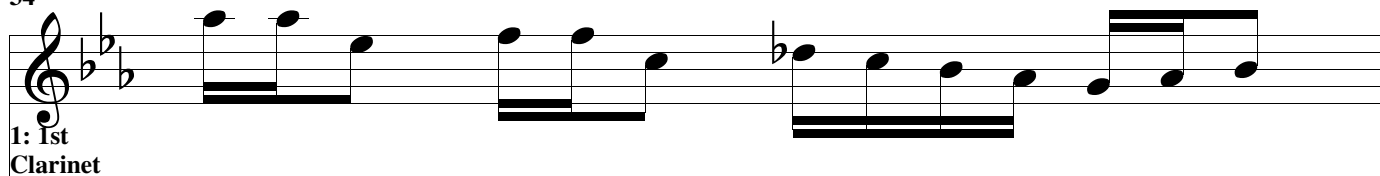
Musical staff for the 3rd Clarinet part at measure 33. The staff is in treble clef with a key signature of two flats. The melody consists of quarter and eighth notes, with some beamed eighth notes.



4: Bass
Clarinet

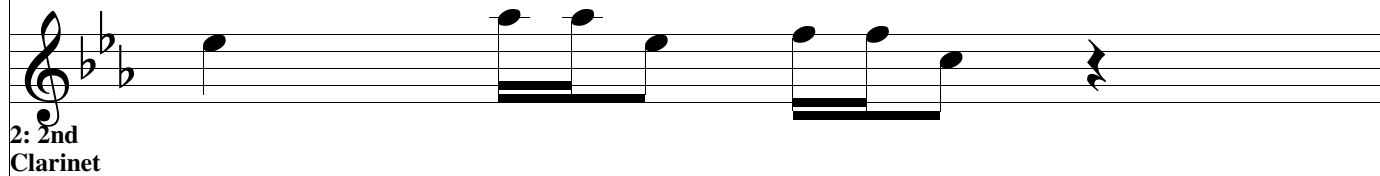
Musical staff for the Bass Clarinet part at measure 33. The staff is in treble clef with a key signature of two flats. The melody consists of quarter and eighth notes, with some beamed eighth notes.

34



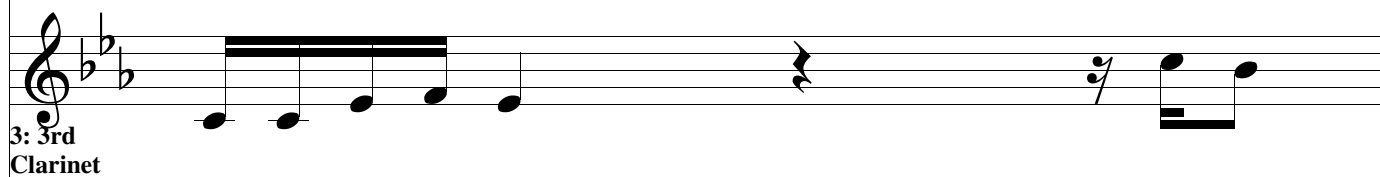
1: 1st Clarinet

Musical staff for the 1st Clarinet part at measure 34. The staff is in treble clef with a key signature of three flats (B-flat, E-flat, A-flat). The melody consists of eighth notes: G4, A4, B-flat4, C5, D5, E5, F5, G5, A5, B-flat5, C6, D6, E6, F6, G6, A6, B-flat6, C7.



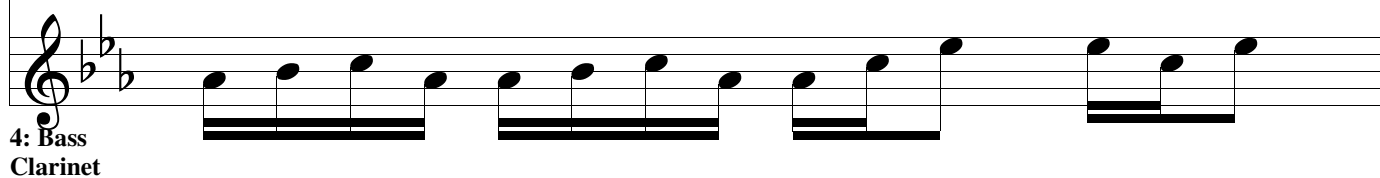
2: 2nd Clarinet

Musical staff for the 2nd Clarinet part at measure 34. The staff is in treble clef with a key signature of three flats. The melody consists of eighth notes: G4, A4, B-flat4, C5, D5, E5, F5, G5, A5, B-flat5, C6, D6, E6, F6, G6, A6, B-flat6, C7.



3: 3rd Clarinet

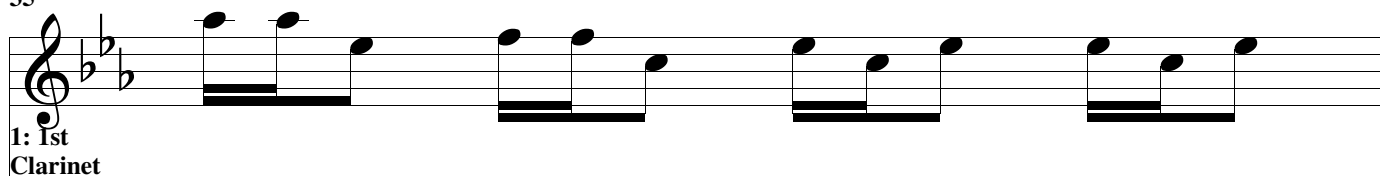
Musical staff for the 3rd Clarinet part at measure 34. The staff is in treble clef with a key signature of three flats. The melody consists of eighth notes: G4, A4, B-flat4, C5, D5, E5, F5, G5, A5, B-flat5, C6, D6, E6, F6, G6, A6, B-flat6, C7.



4: Bass Clarinet

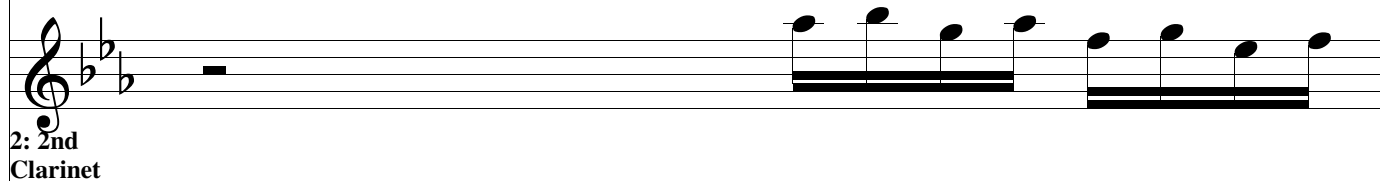
Musical staff for the Bass Clarinet part at measure 34. The staff is in treble clef with a key signature of three flats. The melody consists of eighth notes: G4, A4, B-flat4, C5, D5, E5, F5, G5, A5, B-flat5, C6, D6, E6, F6, G6, A6, B-flat6, C7.

35



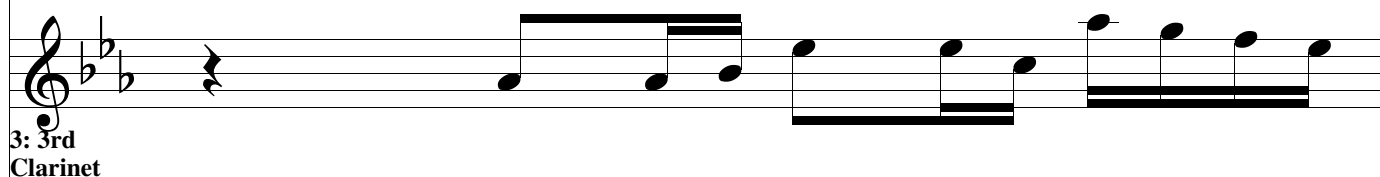
1: 1st Clarinet

Musical staff for the 1st Clarinet part at measure 35. The staff is in treble clef with a key signature of three flats. The melody consists of eighth notes: G4, A4, B-flat4, C5, D5, E5, F5, G5, A5, B-flat5, C6, D6, E6, F6, G6, A6, B-flat6, C7.



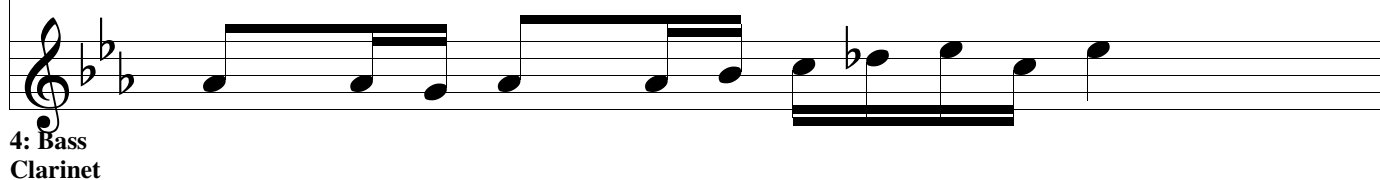
2: 2nd Clarinet

Musical staff for the 2nd Clarinet part at measure 35. The staff is in treble clef with a key signature of three flats. The melody consists of eighth notes: G4, A4, B-flat4, C5, D5, E5, F5, G5, A5, B-flat5, C6, D6, E6, F6, G6, A6, B-flat6, C7.



3: 3rd Clarinet

Musical staff for the 3rd Clarinet part at measure 35. The staff is in treble clef with a key signature of three flats. The melody consists of eighth notes: G4, A4, B-flat4, C5, D5, E5, F5, G5, A5, B-flat5, C6, D6, E6, F6, G6, A6, B-flat6, C7.



4: Bass Clarinet

Musical staff for the Bass Clarinet part at measure 35. The staff is in treble clef with a key signature of three flats. The melody consists of eighth notes: G4, A4, B-flat4, C5, D5, E5, F5, G5, A5, B-flat5, C6, D6, E6, F6, G6, A6, B-flat6, C7.

36

1: 1st Clarinet

Musical staff for the 1st Clarinet, measures 36-37. The key signature is three flats (B-flat, E-flat, A-flat). The staff contains a melodic line with eighth and quarter notes.

2: 2nd Clarinet

Musical staff for the 2nd Clarinet, measures 36-37. The key signature is three flats. The staff contains a melodic line with eighth and quarter notes, including some rests.

3: 3rd Clarinet

Musical staff for the 3rd Clarinet, measures 36-37. The key signature is three flats. The staff contains a melodic line with eighth and quarter notes, including some rests.

4: Bass Clarinet

Musical staff for the Bass Clarinet, measures 36-37. The key signature is three flats. The staff contains a melodic line with eighth and quarter notes.

37

1: 1st Clarinet

Musical staff for the 1st Clarinet, measures 37-38. The key signature changes to three sharps (F-sharp, C-sharp, G-sharp). The staff contains a melodic line with eighth and quarter notes.

2: 2nd Clarinet

Musical staff for the 2nd Clarinet, measures 37-38. The key signature is three sharps. The staff contains a melodic line with eighth and quarter notes, including some rests.

3: 3rd Clarinet

Musical staff for the 3rd Clarinet, measures 37-38. The key signature is three sharps. The staff contains a melodic line with eighth and quarter notes.

4: Bass Clarinet

Musical staff for the Bass Clarinet, measures 37-38. The key signature is three sharps. The staff contains a melodic line with eighth and quarter notes.

38

1: 1st Clarinet

2: 2nd Clarinet

3: 3rd Clarinet

4: Bass Clarinet

Detailed description: This block contains the first four staves of a musical system for measures 38 and 39. All staves are in treble clef with a key signature of three sharps (F#, C#, G#). The 1st Clarinet part (top staff) plays a rhythmic pattern of eighth notes: G4, A4, B4, C5, B4, A4, G4, F#4, E4, D4. The 2nd Clarinet part (second staff) plays a similar pattern: G4, A4, B4, C5, B4, A4, G4, F#4, E4, D4. The 3rd Clarinet part (third staff) plays a pattern: G4, A4, B4, C5, B4, A4, G4, F#4, E4, D4. The Bass Clarinet part (bottom staff) plays a pattern: G3, A3, B3, C4, B3, A3, G3, F#3, E3, D3.

39

1: 1st Clarinet

2: 2nd Clarinet

3: 3rd Clarinet

4: Bass Clarinet

Detailed description: This block contains the last four staves of a musical system for measures 38 and 39. All staves are in treble clef with a key signature of three sharps (F#, C#, G#). The 1st Clarinet part (top staff) continues the pattern: G4, A4, B4, C5, B4, A4, G4, F#4, E4, D4. The 2nd Clarinet part (second staff) plays a pattern: G4, A4, B4, C5, B4, A4, G4, F#4, E4, D4. The 3rd Clarinet part (third staff) plays a pattern: G4, A4, B4, C5, B4, A4, G4, F#4, E4, D4. The Bass Clarinet part (bottom staff) plays a pattern: G3, A3, B3, C4, B3, A3, G3, F#3, E3, D3.

40

1: 1st Clarinet

2: 2nd Clarinet

3: 3rd Clarinet

4: Bass Clarinet

Detailed description: This block contains the musical notation for measures 40 through 43. It features four staves, each representing a different part of the Clarinet section. The key signature is three sharps (F#, C#, G#) and the time signature is 7/8. The notation includes eighth and sixteenth notes, rests, and dynamic markings such as 'f' (forte) and 'p' (piano). The parts are arranged vertically, with the 1st Clarinet at the top and the Bass Clarinet at the bottom.

41

1: 1st Clarinet

2: 2nd Clarinet

3: 3rd Clarinet

4: Bass Clarinet

Detailed description: This block contains the musical notation for measures 41 through 44. It features four staves, each representing a different part of the Clarinet section. The key signature is three sharps (F#, C#, G#) and the time signature is 7/8. The notation includes eighth and sixteenth notes, rests, and dynamic markings such as 'f' (forte) and 'p' (piano). The parts are arranged vertically, with the 1st Clarinet at the top and the Bass Clarinet at the bottom.