



Mario Miladin

Croatie, Dubrovnik

Capriccio III.

A propos de l'artiste

Musically educated with bassoon as my main instrument. However, I get along with all the instruments with black and white combinations. I like jazz and music is my muse. I live to play and play to live.

Sociétaire : HDS-ZAMP

Page artiste : https://www.free-scores.com/partitions_gratuites_mario-miladin.htm

A propos de la pièce



Titre : Capriccio III.

Compositeur : Miladin, Mario

Droit d'auteur : Copyright © Mario Miladin

Instrumentation : Violoncelle seul

Style : Etudes

Mario Miladin sur [free-scores.com](https://www.free-scores.com)



Cette partition ne fait pas partie du domaine public. Merci de contacter l'artiste pour toute utilisation hors du cadre privé.



- écouter l'audio
- partager votre interprétation
- commenter la partition
- contacter l'artiste

Capriccio III.

Allegro moderato

Mario Miladin

♩ = 124-132.

Violoncello

3

6

9

11

13

16

19

22

25

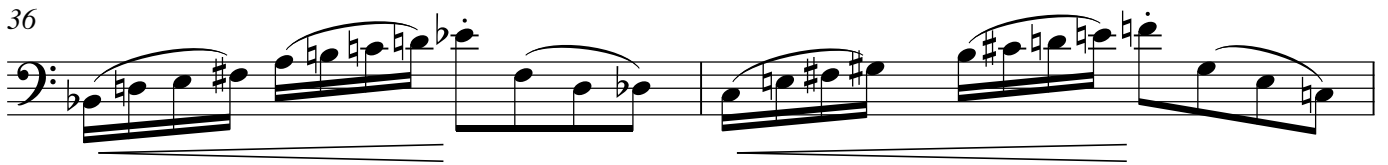
Copyright © Mario Miladin

29  Musical notation for measures 29-31, bass clef, featuring a complex melodic line with many accidentals and slurs.

32  Musical notation for measures 32-33, bass clef, featuring a melodic line with slurs and a dynamic marking of *ff*.

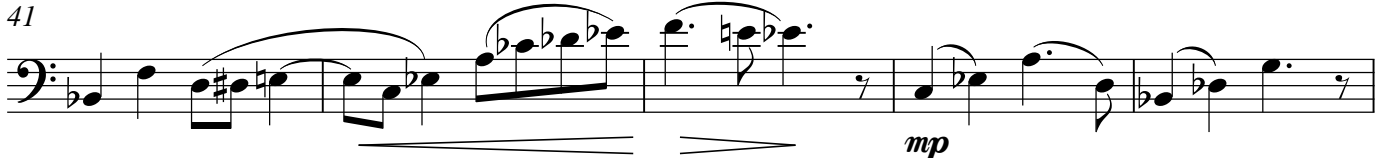
ff con forza

34  Musical notation for measures 34-35, bass clef, featuring a melodic line with slurs and a dynamic marking of *mp*.

36  Musical notation for measures 36-37, bass clef, featuring a melodic line with slurs and a dynamic marking of *mp*.

38  Musical notation for measures 38-40, bass clef, featuring a melodic line with slurs and a dynamic marking of *mp*. The time signature changes to 6/4.

mp tranquillo

41  Musical notation for measures 41-43, bass clef, featuring a melodic line with slurs and a dynamic marking of *mp*.

mp

46  Musical notation for measures 46-50, bass clef, featuring a melodic line with slurs and a dynamic marking of *rit.*. The time signature changes to 6/4.

rit.

51  Musical notation for measures 51-53, bass clef, featuring a melodic line with slurs and a dynamic marking of *p*. The time signature is 6/4.

p

54  Musical notation for measures 54-58, bass clef, featuring a melodic line with slurs, triplets, and a dynamic marking of *f espress.*. The tempo marking is $\text{♩} = 124-132$.

mp

f espress.

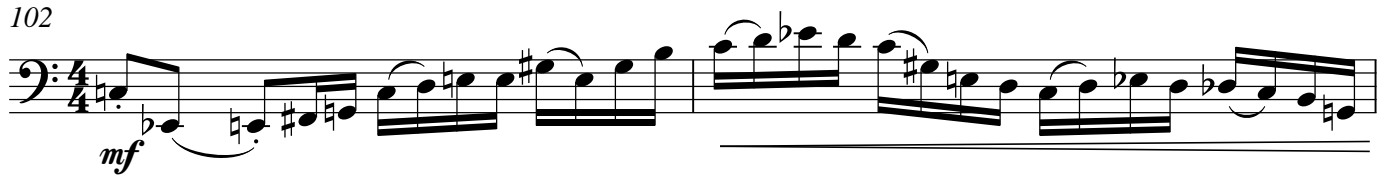
59  Musical notation for measures 59-64, bass clef, featuring a melodic line with slurs and a dynamic marking of *f*.

f

65  Musical notation for measures 65-68, bass clef, featuring a melodic line with slurs and a dynamic marking of *p*.

p

102



104

