



Jacob Munk Nielsen

Danemark, '

Storm P.

A propos de l'artiste

Jacob Munk Nielsen danish saxophone player, composer and music teacher. He has over the years played in many different bandconstellations and genres. He has amongst others worked with The Nazarenes, Roots Harmonics Band, Earl Sixteen, Lutan Fyah, Miami and UPS. He has over the years released several albums and many musicsheet arrangements for different musical ensembles and in a variety of styles.

Qualification : University
Sociétaire : KODA - Code IPI artiste : 288985483
Page artiste : https://www.free-scores.com/partitions_gratuites_mrsoundlab.htm

A propos de la pièce



Titre : Storm P.
Compositeur : Nielsen, Jacob Munk
Arrangeur : Nielsen, Jacob Munk
Droit d'auteur : Copyright © Jacob Munk Nielsen
Editeur : Nielsen, Jacob Munk
Style : Jazz

Jacob Munk Nielsen sur [free-scores.com](https://www.free-scores.com)

LICENCE

Cette partition nécessite une autorisation :
- pour les représentations publiques
- pour l'utilisation par les professeurs

S'acquies de cette licence sur :

<https://www.free-scores.com/licence?p=aPmztPayZB>



- écouter l'audio
- partager votre interprétation
- commenter la partition
- s'acquies de la licence
- contacter l'artiste

Interdiction de diffusion sur d'autres sites Web.

Storm P. from the album Saxolo.



STORM P.

ALTO SAX

FROM THE ALBUM SAXOLO.

JACOB MUNK NIELSEN

♩=125 SWING

Chords and musical notation are provided for each staff, including circled letters A, B, C, D, E, and F#m7. The score includes various musical notations such as triplets and slurs.

ON SOLO REPEAT C

2
60
D B7 A/E E7 D A/c#Bmi7

65
A E7 A A7 D B7

70
A/E E7 D A/c#Bmi7 A C#7 F#7

75
E7 D7 D7 C#7 F#7 A7

80
D B7 A/E E7 D A/c#Bmi7

85
A D A/c#Bmi7 A D A/c#Bmi7 A
Rit.

STORM P.

TENOR SAX

FROM THE ALBUM SAXOLO.

JACOB MUNK NIELSEN

♩=125 SWING

ON SOLO REPEAT C

©2009 / JACOBMUNKNIELSEN.SANOCAMP.COM

2 G E7 D/A A7 G D/F# Em7

D A7 D D7 G E7

D/A A7 G D/F# Em7 D F#7 Bb7

A7 G7 G7 F#7 Bb7 D7

G E7 D/A A7 G D/F# Em7

D G D/F# Em7 D G D/F# Em7 D

STORM P.

FLUTE

FROM THE ALBUM SAXOLO.

JACOB MUNK NIELSEN

♩ = 125 SWING

Chord symbols: C, C7, F, D7, C/G, G7, F, C/E Dmi7, E7, A_w7, F7, A_w7, C7, F, D7, C, G7, F, C/E Dmi7, C, G7, C, F, D7, C/G, G7, F, C/E Dmi7, C, G7, A_w7, C7, F, D7, C/G, G7, F, C/E Dmi7, C, G7, F, D7, C/G, G7, F, C/E Dmi7, C, G7, C, F.

Section A: Measures 1-10

Section B: Measures 11-20

Section C: Measures 21-56

Measures 26-31, 32-37, 38-43, 44-49, 50-55 are marked with a repeat sign (//) and a double bar line, indicating a solo section.

Measures 56-57: ON SOLO REPEAT C

2 D7 C/G G7 F C/E Dmi7 C G7

61

C C7 F D7 C/G

66

G7 F C/E Dmi7 C E7 A_u7 G7

71

F7 F7 E7 A_u7 C7 F

76

D7 C/G G7 F C/E Dmi7 C

81

F C/E Dmi7 C F C/E Dmi7 C

86

RIT.

STORM P.

CLARINET

FROM THE ALBUM SAXOLO.

JACOB MUNK NIELSEN

♩ = 125 SWING

Chord symbols: (A) D, D7, G, E7, D/A, A7, G, D/F#E♭mi7, D, A7, D, D7, G, E7, D/A, A7, G, D/F#E♭mi7, D, F#7, (B) B♭7, A7, G7, G7, F#7, B♭7, D7, G, E7, D/A, A7, G, D/F#E♭mi7, D, A7, D, D7, G, E7, D/A, A7, D, D7, G, E7, D/A, A7, G, D/F#E♭mi7, D, F#7, B♭7, A7.

2 G7 G7 F#7 B_w7 D7 G E7

Musical staff 1 (measures 48-53) with slash notation for guitar.

Musical staff 2 (measures 54-58) with chords D/A, A7, G, D/F#E_{mi}7, D, A7, D and triplets.

Musical staff 3 (measures 59-63) with chords D7, G, E7, D/A, A7 and the instruction "ON SOLO REPEAT C".

Musical staff 4 (measures 64-68) with chords G, D/F#E_{mi}7, D, A7, D, D7, G and triplets.

Musical staff 5 (measures 69-73) with chords E7, D/A, A7, G, D/F#E_{mi}7, D, F#7 and triplets.

Musical staff 6 (measures 74-78) with chords B_w7, A7, G7, G7, F#7, B_w7 and triplets.

Musical staff 7 (measures 79-83) with chords D7, G, E7, D/A, A7 and triplets.

Musical staff 8 (measures 84-88) with chords G, D/F#E_{mi}7, D, G, D/F#E_{mi}7, D, G, D/F#E_{mi}7 and triplets.

Musical staff 9 (measures 89-90) with a final chord D and a ritardando (rit.) marking.

STORM P.

TRUMPET

FROM THE ALBUM SAXOLO.

JACOB MUNK NIELSEN

♩=125 SWING

Sheet music for Trumpet, featuring a 4/4 swing tempo of 125 bpm. The key signature is two sharps (D major). The music is divided into systems with measure numbers 5, 10, 15, 20, 25, 30, 36, and 42. Chord progressions are indicated above the staff, including sections A and B. Trills are marked with a '3' and a slur. The piece concludes with a double bar line at measure 42.

Chord progressions for Section A (measures 1-12):
A D D7 G
E7 D/A A7 G D/F# E mi7 D A7
D D7 G E7 D/A

Chord progressions for Section B (measures 13-24):
A7 G D/F# E mi7 D F#7 Bb7 A7
G7 G7 F#7 Bb7 D7 G
E7 D/A A7 G D/F# E mi7 D A7

Chord progressions for Section C (measures 25-35):
D D7 G E7 D/A A7
G D/F# E mi7 D A7 D D7 G E7

Chord progressions for Section D (measures 36-42):
D/A A7 G D/F# E mi7 D F#7 Bb7 A7

2

G7 G7 F#7 B_w7 D7 G E7

48

D/A A7 G D/F# E_{mi}7 D A7 **D** D

54

D7 G E7 ON SOLO REPEAT **C** D/A A7

59

G D/F# E_{mi}7 D A7 D D7 G

64

E7 D/A A7 G D/F# E_{mi}7 D F#7

69

B_w7 A7 G7 G7 F#7 B_w7

74

D7 G E7 D/A A7

79

G D/F# E_{mi}7 D G D/F# E_{mi}7 D G D/F# E_{mi}7

84

89

Rit.

STORM P.

TROMBONE

FROM THE ALBUM SAXOLO.

JACOB MUNK NIELSEN

♩=125 SWING

A C

C7

F

D7

C/G

G7

F

C/E Dmi7

C

G7

C

C7

F

D7

C/G

G7

F C/E Dmi7 C

E7

B A_w7

G7

F7

F7

E7

A_w7

C7

F

D7

C/G

G7

F

C/E Dmi7

C

G7

C C

C7

F

D7

C/G

G7

F

C/E Dmi7

C

G7

C

C7

F

D7

C/G

G7

F

C/E Dmi7

C

E7

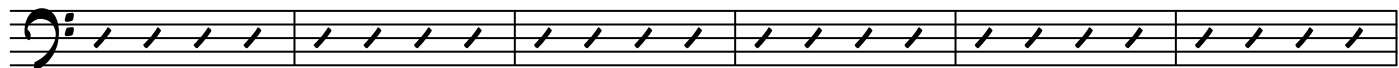
A_w7

G7

F7

43

F7 E7 A_w7 C7 F D7 C/G



49

G7 F C/E D_{Mi}7 C G7 **D** C C7



55

ON SOLO REPEAT C

F D7 C/G G7 F C/E D_{Mi}7



60

C G7 C C7 F D7



65

C/G G7 F C/E D_{Mi}7 C E7 A_w7



70

G7 F7 F7 E7 A_w7 C7



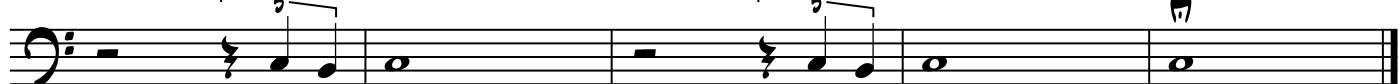
75

F D7 C/G G7 F C/E D_{Mi}7



80

C F C/E D_{Mi}7 C F C/E D_{Mi}7 C



85

RIT.

STORM P.

GUITAR

FROM THE ALBUM SAXOLO.

JACOB MUNK NIELSEN

♩ = 125 SWING

Chord symbols: C, C7, F, D7, C/G, G7, F, C/E Dmi7, C, G7, C, C7, F, D7, C/G, G7, F, C/E Dmi7, C, E7, A7, G7, F7, F7, E7, A7, C7, F, D7, C/G, G7, C, C7, F, D7, C/G, G7, F, C/E Dmi7, C, G7, C, C7, F, D7, C/G, G7, F, C/E Dmi7, C, G7, C, C7, F.

ON SOLO REPEAT C

2 D7 C/G G7 F C/E Dmi7 C G7

61

C C7 F D7 C/G

66

G7 F C/E Dmi7 C E7 A7 G7

71

F7 F7 E7 A7 C7 F

76

D7 C/G G7 F C/E Dmi7 C

81

F C/E Dmi7 C F C/E Dmi7 C

86

Rit.

STORM P.

ACOUSTIC BASS

FROM THE ALBUM SAXOLO.

JACOB MUNK NIELSEN

♩ = 125 SWING

15

(A) E7 (B) A_w7 G7 F7 F7 E7

A_w7 C7 F D7 C/G G7 F C/E Dmi7

22 C G7 (C) C C7 F D7 C/G G7

29 F C/E Dmi7 C G7 C C7 F D7 C/G

36 G7 F C/E Dmi7 C E7 A_w7 G7 F7 F7 E7

43 A_w7 C7 F D7 C/G G7 F C/E Dmi7

50 C G7 (D) C C7 F D7 C/G G7

57 ON SOLO REPEAT C
F C/E Dmi7 C G7 C C7 F D7 C/G

64 G7 F C/E Dmi7 C E7 A_w7 G7 F7 F7 E7

71 A_w7 C7 F D7 C/G G7 F C/E Dmi7

78 C F C/E Dmi7 C F C/E Dmi7 C

85

RIT.

STORM P.

FROM THE ALBUM SAXOLO.

JACOB MUNK NIELSEN

DRUM SET

♩=125 SWING

A

Musical staff for section A, starting with a treble clef and a 4/4 time signature. The first measure contains a melodic line with eighth notes and a wavy line below it. The following seven measures contain a slash (/) indicating a drum solo.

(BRUSHES)

Musical staff for section A continuation, containing eight measures of a slash (/) indicating a drum solo.

B

Musical staff for section B, containing eight measures of a slash (/) indicating a drum solo.

C

Musical staff for section C, containing eight measures of a slash (/) indicating a drum solo.

27

Musical staff for section C continuation, containing eight measures of a slash (/) indicating a drum solo.

36

Musical staff for section C continuation, containing eight measures of a slash (/) indicating a drum solo.

45

D

Musical staff for section D, containing eight measures of a slash (/) indicating a drum solo.

54

ON SOLO REPEAT C

Musical staff for section D continuation, containing eight measures of a slash (/) indicating a drum solo.

63

Musical staff for section D continuation, containing eight measures of a slash (/) indicating a drum solo.

72

Musical staff for section D continuation, containing eight measures of a slash (/) indicating a drum solo.

81

Rit.