



# Bernard Dewagtere

France, SIN LE NOBLE

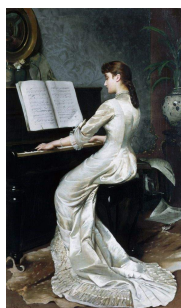
## Song without Words Rachmaninoff, Sergei

### A propos de l'artiste

Docteur en musicologie, chef d'orchestre et compositeur.  
Compositions et arrangements de toutes époques, dans tous les styles ou genres musicaux et pour n'importe quelles formations instrumentales ou vocales.

**Qualification :** Docteur en Musicologie  
**Sociétaire :** SACEM - Code IPI artiste : 342990  
**Page artiste :** [https://www.free-scores.com/partitions\\_gratuites\\_bernard-dewagtere.htm](https://www.free-scores.com/partitions_gratuites_bernard-dewagtere.htm)

### A propos de la pièce



**Titre :** Song without Words  
**Compositeur :** Rachmaninoff, Sergei  
**Arrangeur :** Dewagtere, Bernard  
**Droit d'auteur :** Copyright © Bernard Dewagtere  
**Editeur :** Dewagtere, Bernard  
**Instrumentation :** Orgue seul  
**Style :** Romantique

### Bernard Dewagtere sur [free-scores.com](https://www.free-scores.com)

#### LICENCE

Cette partition nécessite une autorisation :  
- pour les représentations publiques  
- pour l'utilisation par les professeurs

**S'acquitter de cette licence sur :**  
<https://www.free-scores.com/licence?p=auH193SpGV>



- écouter l'audio
- partager votre interprétation
- commenter la partition
- s'acquitter de la licence
- contacter l'artiste

Interdiction de diffusion sur d'autres sites Web.

# Song without Words

Sergei Rachmaninoff (1886/87)

Transc. : Bernard Dewagtere

Lento sempre legato

Organ

Musical score for Organ, measures 1-3. The score is in 4/4 time with a key signature of one flat. It features a right-hand (RH) and left-hand (LH) part. The RH part consists of a series of eighth-note triplets, while the LH part has a steady bass line. Measure 1 starts with a treble clef and a bass clef. Measure 2 has a treble clef and a bass clef. Measure 3 has a treble clef and a bass clef. The piece ends with a double bar line and repeat dots.

Musical score for Organ, measures 4-6. The score continues with the same RH and LH parts. Measure 4 has a treble clef and a bass clef. Measure 5 has a treble clef and a bass clef. Measure 6 has a treble clef and a bass clef. The piece ends with a double bar line and repeat dots.

Musical score for Organ, measures 7-9. The score continues with the same RH and LH parts. Measure 7 has a treble clef and a bass clef. Measure 8 has a treble clef and a bass clef. Measure 9 has a treble clef and a bass clef. The piece ends with a double bar line and repeat dots.

Musical score for Organ, measures 10-13. The score continues with the same RH and LH parts. Measure 10 has a treble clef and a bass clef. Measure 11 has a treble clef and a bass clef. Measure 12 has a treble clef and a bass clef. Measure 13 has a treble clef and a bass clef. The piece ends with a double bar line and repeat dots.

Musical score for Organ, measures 14-16. The score continues with the same RH and LH parts. Measure 14 has a treble clef and a bass clef. Measure 15 has a treble clef and a bass clef. Measure 16 has a treble clef and a bass clef. The piece ends with a double bar line and repeat dots.