



# MAURIZIO MACHELLA

Arrangeur, Interprete, Editeur

Italie

## A propos de l'artiste

Famous musician and organist, known throughout the world.

Italian publisher, researcher and organist.

The I.net Greatest Organ Music Resource in the World.

The most complete private library of music scores for organ and harpsichord.

Published rare scores of organ and harpsichord music with Armelin Musica of Padova ([www.armelin.it](http://www.armelin.it)) and with the sheet music world center: "Free-scores.com".

More than 1,8 million downloads!

Remember ... all this work, if you can, make me an offer on Paypal.

Thanks!

**Site Internet:** <http://www.facebook.com/home.php?ref=home#/profile.php?id=100000082741780&ref=name>

## A propos de la pièce

<b>Titre:</b>	MARCH in D. Trascrizione da Concerto per Grande Organo. [from "Op.5 n.1" for Pianoforte]
<b>Compositeur:</b>	Rebikov, Vladimir
<b>Arrangeur:</b>	MACHELLA, MAURIZIO
<b>Licence:</b>	Public domain
<b>Instrumentation:</b>	Orgue seul
<b>Style:</b>	Classique

## MAURIZIO MACHELLA sur [free-scores.com](http://free-scores.com)

[http://www.free-scores.com/partitions\\_gratuites\\_giordaniello.htm](http://www.free-scores.com/partitions_gratuites_giordaniello.htm)

- Contacter l'artiste
- Commenter cette partition
- Ajouter votre interprétation MP3
- Accès partition et écoute audio avec ce QR Code :



# March, un D

Op. 5 n. 1 per Pianoforte

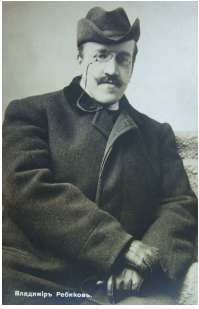
Trascrizione da Concerto per Grande Organo

a cura di

Maurizio Machella

Vladimir Rebikoff  
1866-1920

Tempo di Marcia.



*f*

poco marcato

Ped.

Musical score for the first system, measures 1-4. It features a treble clef with a key signature of two sharps (D major) and a 4/4 time signature. The bass clef part includes a 'Ped.' (pedal) instruction. The music is marked 'poco marcato' and 'f' (forte).

Musical score for the second system, measures 5-8. It continues the piano part with triplets in the treble clef and sustained chords in the bass clef.

*mf*

(sic!)

ten.

Tromba

ten.

Musical score for the third system, measures 9-12. It includes a 'Tromba' (trumpet) part in the bass clef. The piano part is marked 'mf' (mezzo-forte). The trumpet part has a 'ten.' (tutti) marking. The system ends with a double bar line.

13

ten. ten. ten.

This system contains measures 13 through 17. It features a grand staff with three staves: two treble clefs and one bass clef. The key signature has two sharps (F# and C#). The music includes various dynamics such as *ten.* (tender) and *ff* (fortissimo). There are also hairpins and accents. The notation includes chords, eighth notes, and sixteenth notes.

18

*ff*

This system contains measures 18 through 21. It continues the grand staff notation. Measure 20 features a *ff* (fortissimo) dynamic marking. The music includes chords, eighth notes, and sixteenth notes with various articulations.

22

This system contains measures 22 through 25. The notation continues with chords, eighth notes, and sixteenth notes. There are some slurs and ties across measures.

26

This system contains measures 26 through 29. It features a grand staff with three staves. The music includes chords, eighth notes, and sixteenth notes. There are triplets indicated by a '3' over the notes in measures 27 and 28.

30

3

35

3

39

*mf* *rall.*

44

*mp* *p* *più rall. e dimin.* *pp* *ff*