



# Reginaldo Budai

Arrangeur, Compositeur

Brésil, São Paulo

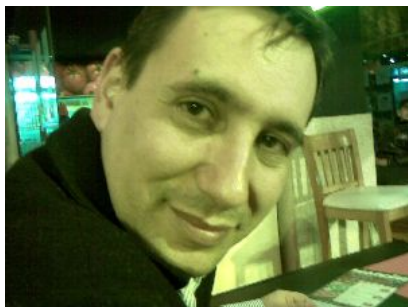
## A propos de l'artiste

Reginaldo Budai, nació en São Paulo en 1967, Brazil, compositor y arreglador.

**Qualification:** étudiante au baccalauréat en musique  
l'Université Mozarteum de São Paulo - Famosp

**Site Internet:** <http://www.free-scores.com>

## A propos de la pièce



**Titre:** Millenium  
**Compositeur:** Budai, Reginaldo  
**Licence:** Budai Reginaldo Budai © All rights reserve  
**Editeur:** Budai, Reginaldo  
**Instrumentation:** Quintette à cordes : 2 Violons, Alto, Violoncelle, Basse  
**Style:** Contemporain  
**Commentaire:** Reginaldo Budai , São Paulo - Brasil

## Reginaldo Budai sur [free-scores.com](http://www.free-scores.com)

[http://www.free-scores.com/partitions\\_gratuites\\_budai.htm](http://www.free-scores.com/partitions_gratuites_budai.htm)

- Contacter l'artiste
- Commenter cette partition
- Ajouter votre interprétation MP3
- Accès partition avec ce QR Code :



Cette partition ne fait pas partie du domaine public. Merci de contacter l'artiste pour toute utilisation hors du cadre privé.

# Millenium

Mus :Reginaldo Budai

**A**

$\text{♩} = 60$

Violin I  
Violin II&III  
Viola  
Violoncello  
Contrabass *pizz.*

6

Vln I  
Vln II&III  
Vla  
Vc.  
Cb.

**B**

11

Vln I  
Vln II&III  
Vla  
Vc.  
Cb.

16

Vln I  
Vln II&III  
Vla  
Vc.  
Cb.

Millenium

21

Vln I  
Vln II&III  
Vla  
Vc.  
Cb.

Detailed description: This system contains measures 21 through 25. The Vln I part features a melodic line with eighth and sixteenth notes. Vln II&III plays a rhythmic accompaniment of eighth notes. Vla has a steady eighth-note accompaniment. Vc. plays a simple bass line with quarter notes. Cb. provides a rhythmic pattern of eighth notes with rests.

26

Vln I  
Vln II&III  
Vla  
Vc.  
Cb.

Detailed description: This system contains measures 26 through 30. The Vln I part continues its melodic line. Vln II&III maintains the eighth-note accompaniment. Vla continues with eighth notes. Vc. plays a steady bass line. Cb. continues its rhythmic pattern.

31

**C**  
♩ = 90

Vln I  
Vln II&III  
Vla  
Vc.  
Cb.

arco

Detailed description: This system contains measures 31 through 35. A common time signature change is indicated by a 'C' in a box above the first measure, with a tempo marking of a quarter note equal to 90. A double bar line with repeat dots precedes measure 31. Vln I and Vln II&III have rests until measure 32, then play chords. Vla has rests until measure 32, then plays chords. Vc. plays a continuous eighth-note accompaniment. Cb. has rests until measure 32, then plays a bass line. The word 'arco' is written below the Vc. part.

36

Vln I  
Vln II&III  
Vla  
Vc.  
Cb.

Detailed description: This system contains measures 36 through 40. Vln I and Vln II&III play chords. Vla plays chords. Vc. continues with eighth-note accompaniment. Cb. plays a bass line.

Millenium

41

Vln I  
Vln II&III  
Vla  
Vc.  
Cb.

Detailed description: This system contains measures 41 through 45. The Vln I part features a melodic line with eighth and sixteenth notes. Vln II&III and Vla provide harmonic support with sustained notes and some movement. The Vc. part has a rhythmic pattern of eighth notes with accents. The Cb. part has a sparse bass line with some rests.

46

Vln I  
Vln II&III  
Vla  
Vc.  
Cb.

Detailed description: This system contains measures 46 through 50. Vln I plays a series of chords. Vln II&III and Vla continue with sustained notes. The Vc. part has a rhythmic pattern of eighth notes with accents. The Cb. part has a sparse bass line with some rests.

51

**D** = 150

Vln I  
Vln II&III  
Vla  
Vc.  
Cb.

Detailed description: This system contains measures 51 through 56. A dynamic marking 'D' with a hairpin and a tempo marking '= 150' are present above the first measure. Vln I has a melodic line with eighth notes. Vln II&III and Vla provide harmonic support. The Vc. part has a rhythmic pattern of eighth notes with accents. The Cb. part has a sparse bass line with some rests.

57

Vln I  
Vln II&III  
Vla  
Vc.  
Cb.

Detailed description: This system contains measures 57 through 61. Vln I has a melodic line with eighth notes. Vln II&III and Vla provide harmonic support. The Vc. part has a rhythmic pattern of eighth notes with accents. The Cb. part has a sparse bass line with some rests.

Millenium

63 **E** ♩ = 150

Vln I  
Vln II&III  
Vla  
Vc.  
Cb.

70

Vln I  
Vln II&III  
Vla  
Vc.  
Cb.

77 **F** ♩ = 90

Vln I  
Vln II&III  
Vla  
Vc.  
Cb.

arco

82

Vln I  
Vln II&III  
Vla  
Vc.  
Cb.

Millenium

87

Vln I  
Vln II&III  
Vla  
Vc.  
Cb.

Detailed description: This system contains measures 87 through 91. It features five staves: Violin I, Violin II & III, Viola, Violoncello, and Contrabass. The key signature has one sharp (F#). The Violin I part has a melodic line with slurs and accents. The Violin II & III part provides harmonic support with chords and moving lines. The Viola part has a steady eighth-note accompaniment. The Violoncello part has a rhythmic eighth-note pattern. The Contrabass part has a more active line with slurs and accents.

92

Vln I  
Vln II&III  
Vla  
Vc.  
Cb.

Detailed description: This system contains measures 92 through 96. The Violin I part continues with a melodic line. The Violin II & III part has a more active line with slurs. The Viola part has a steady eighth-note accompaniment. The Violoncello part has a rhythmic eighth-note pattern. The Contrabass part has a more active line with slurs and accents.

97

90

Vln I  
Vln II&III  
Vla  
Vc.  
Cb.

G  
pizz.  
pizz.  
pizz.  
pizz.

Detailed description: This system contains measures 97 through 103. At measure 97, there is a key signature change to G major, indicated by a 'G' in a box. The Violin I, Violin II & III, Viola, and Contrabass parts have a 'pizz.' (pizzicato) marking. The Violoncello part has a melodic line with slurs. The time signature changes to 3/4.

104

Vln I  
Vln II&III  
Vla  
Vc.  
Cb.

Detailed description: This system contains measures 104 through 108. The Violin I part has a melodic line with slurs. The Violin II & III part has a more active line with slurs. The Viola part has a steady eighth-note accompaniment. The Violoncello part has a rhythmic eighth-note pattern. The Contrabass part has a more active line with slurs and accents.

Millenium

6

111

Vln I  
Vln II&III  
Vla  
Vc.  
Cb.

Detailed description: This system covers measures 111 to 117. It features five staves: Violin I, Violin II & III, Viola, Violoncello, and Contrabasso. The Violin I and II & III staves have melodic lines with accents. The Viola and Violoncello staves have rhythmic patterns with accents. The Contrabasso staff has a bass line with accents. The key signature has one sharp (F#) and the time signature is 4/4.

118

Vln I  
Vln II&III  
Vla  
Vc.  
Cb.

arco.  
p  
arco.  
p

Detailed description: This system covers measures 118 to 121. The Violin I and II & III staves are marked 'arco.' and 'p'. The Viola and Violoncello staves have rhythmic patterns with accents. The Contrabasso staff has a bass line with accents. The key signature has one sharp (F#) and the time signature is 4/4.

122

Vln I  
Vln II&III  
Vla  
Vc.  
Cb.

Detailed description: This system covers measures 122 to 125. The Violin I and II & III staves have melodic lines with accents. The Viola and Violoncello staves have rhythmic patterns with accents. The Contrabasso staff has a bass line with accents. The key signature has one sharp (F#) and the time signature is 4/4.

126

Vln I  
Vln II&III  
Vla  
Vc.  
Cb.

Tema:  
arco.  
mf  
arco.

Detailed description: This system covers measures 126 to 129. The Violin I and II & III staves are marked 'arco.' and 'mf'. The Viola and Violoncello staves have rhythmic patterns with accents. The Contrabasso staff has a bass line with accents. The key signature has one sharp (F#) and the time signature is 4/4.

Millenium

131

Vln I  
Vln II&III  
Vla  
Vc.  
Cb.

Detailed description: This system contains measures 131 through 137. It features five staves: Violin I, Violin II & III, Viola, Violoncello, and Contrabass. The music is in a key with one sharp (F#) and a 4/4 time signature. The Violin I part has a melodic line with slurs and accents. The Violin II & III part provides harmonic support with chords and moving lines. The Viola part has a steady eighth-note accompaniment. The Violoncello and Contrabass parts have a similar eighth-note accompaniment with some syncopation.

138

Vln I  
Vln II&III  
Vla  
Vc.  
Cb.

*mf*

**H** = 160

Detailed description: This system contains measures 138 through 144. It features the same five staves as the previous system. The music continues in the same key and time signature. The Violin I part has a melodic line with slurs and accents. The Violin II & III part provides harmonic support. The Viola part has a steady eighth-note accompaniment. The Violoncello and Contrabass parts have a similar eighth-note accompaniment. A dynamic marking of *mf* (mezzo-forte) is present. A rehearsal mark **H** is placed above measure 144, with a tempo marking of = 160 below it.

145

Vln I  
Vln II&III  
Vla  
Vc.  
Cb.

Detailed description: This system contains measures 145 through 152. It features the same five staves. The music continues in the same key and time signature. The Violin I part has a melodic line with slurs and accents. The Violin II & III part provides harmonic support. The Viola part has a steady eighth-note accompaniment. The Violoncello and Contrabass parts have a similar eighth-note accompaniment.

153

Vln I  
Vln II&III  
Vla  
Vc.  
Cb.

*mp*

Detailed description: This system contains measures 153 through 159. It features the same five staves. The music continues in the same key and time signature. The Violin I part has a melodic line with slurs and accents. The Violin II & III part provides harmonic support. The Viola part has a steady eighth-note accompaniment. The Violoncello and Contrabass parts have a similar eighth-note accompaniment. A dynamic marking of *mp* (mezzo-piano) is present.



Millenium

158

Vln I  
Vln II&III  
Vla  
Vc.  
Cb.

*mf*

*mf*

*mf*

This system covers measures 158 to 162. It features five staves: Vln I, Vln II&III, Vla, Vc., and Cb. The Vln I staff has a melodic line with a key signature of one sharp (F#) and a dynamic marking of *mf*. The Vln II&III staff provides harmonic support with chords and a dynamic marking of *mf*. The Vla staff has a melodic line with a dynamic marking of *mf*. The Vc. staff has a melodic line with a dynamic marking of *mf*. The Cb. staff has a rhythmic accompaniment with a dynamic marking of *mf*.

163

Vln I  
Vln II&III  
Vla  
Vc.  
Cb.

This system covers measures 163 to 168. The Vln I staff continues its melodic line. The Vln II&III staff continues its harmonic support. The Vla staff continues its melodic line. The Vc. staff continues its melodic line. The Cb. staff continues its rhythmic accompaniment.

169

Vln I  
Vln II&III  
Vla  
Vc.  
Cb.

*mp*  
*mf*

*mp*  
*mf*

*mp*  
*mf*

This system covers measures 169 to 174. The Vln I staff has a melodic line with a dynamic marking of *mp*. The Vln II&III staff has a melodic line with a dynamic marking of *mf*. The Vla staff has a melodic line with a dynamic marking of *mp*. The Vc. staff has a melodic line with a dynamic marking of *mp*. The Cb. staff has a rhythmic accompaniment with a dynamic marking of *mp*.

175

Vln I  
Vln II&III  
Vla  
Vc.  
Cb.

*mp*  
*mf*

*mp*  
*mf*

*mp*  
*mf*

This system covers measures 175 to 180. The Vln I staff has a melodic line with a dynamic marking of *mp*. The Vln II&III staff has a melodic line with a dynamic marking of *mf*. The Vla staff has a melodic line with a dynamic marking of *mp*. The Vc. staff has a melodic line with a dynamic marking of *mp*. The Cb. staff has a rhythmic accompaniment with a dynamic marking of *mp*.

180

Vln I  
Vln II&III  
Vla  
Vc.  
Cb.

Detailed description: This system covers measures 180 to 184. Vln I has a few notes at the start. Vln II&III has a whole note chord. Vla has a melodic line with slurs and accents. Vc. and Cb. have a rhythmic accompaniment with slurs and accents.

185

Vln I  
Vln II&III  
Vla  
Vc.  
Cb.

Detailed description: This system covers measures 185 to 189. Vln I and Vln II&III are mostly silent. Vla has a continuous melodic line with slurs and accents. Vc. and Cb. continue the rhythmic accompaniment.

190

Vln I  
Vln II&III  
Vla  
Vc.  
Cb.

**I**

*mf*

Detailed description: This system covers measures 190 to 195. It begins with a first ending bracket labeled 'I'. Vln I and Vln II&III play chords, with *mf* dynamics. Vla has a melodic line with slurs and accents. Vc. and Cb. have a rhythmic accompaniment.

196

Vln I  
Vln II&III  
Vla  
Vc.  
Cb.

Detailed description: This system covers measures 196 to 200. Vln I has a melodic line with slurs and accents. Vln II&III has a melodic line with slurs and accents. Vla has a melodic line with slurs and accents. Vc. and Cb. have a rhythmic accompaniment.

Millenium

202

Vln I  
Vln II&III  
Vla  
Vc.  
Cb.

Detailed description: This system contains measures 202 through 207. It features five staves: Violin I, Violin II & III, Viola, Violoncello, and Contrabass. The Violin I part has a melodic line with some grace notes. The Violoncello and Contrabass parts have a rhythmic accompaniment with eighth notes and some accents.

208

Vln I  
Vln II&III  
Vla  
Vc.  
Cb.

Detailed description: This system contains measures 208 through 214. The Violin I part continues with a melodic line. The Violoncello and Contrabass parts have a rhythmic accompaniment with eighth notes and some accents.

215

Vln I  
Vln II&III  
Vla  
Vc.  
Cb.

**J** = 150

Detailed description: This system contains measures 215 through 219. A tempo change is indicated by a 'J' in a box followed by '= 150'. The Violoncello and Contrabass parts have a rhythmic accompaniment with eighth notes and some accents.

220

Vln I  
Vln II&III  
Vla  
Vc.  
Cb.

Detailed description: This system contains measures 220 through 224. The Violin I and Violoncello parts have a melodic line with some accents. The Violoncello and Contrabass parts have a rhythmic accompaniment with eighth notes and some accents.

225

Vln I  
Vln II&III  
Vla  
Vc.  
Cb.

*mf*

Detailed description: This system covers measures 225 to 230. The Vln I part is mostly silent, with a final chord at measure 230. Vln II&III and Vla play sustained chords, with dynamics marked *mf*. The Vc. and Cb. parts feature rhythmic patterns with accents and a melodic line in the Vc. part.

231

Vln I  
Vln II&III  
Vla  
Vc.  
Cb.

Detailed description: This system covers measures 231 to 235. Vln I has a fast, rhythmic passage in measure 231. Vln II&III and Vla continue with sustained chords. The Vc. and Cb. parts maintain their rhythmic accompaniment.

236

Vln I  
Vln II&III  
Vla  
Vc.  
Cb.

*mp*

Detailed description: This system covers measures 236 to 240. Vln I and Vln II&III play chords with dynamics marked *mp*. The Vc. and Cb. parts continue with their rhythmic accompaniment.

241

Vln I  
Vln II&III  
Vla  
Vc.  
Cb.

*mf*

Detailed description: This system covers measures 241 to 245. Vln I and Vln II&III play chords with dynamics marked *mf*. The Vc. and Cb. parts continue with their rhythmic accompaniment.

Millenium

12

247

Vln I  
Vln II&III  
Vla  
Vc.  
Cb.

*mp*

This system contains measures 247 through 251. It features five staves: Vln I, Vln II&III, Vla, Vc., and Cb. The Vln I and Vln II&III staves have rests in measures 247-250, with notes appearing in measure 251. The Vla, Vc., and Cb. staves have continuous rhythmic patterns. A dynamic marking of *mp* is present in measures 248 and 249.

252

Vln I  
Vln II&III  
Vla  
Vc.  
Cb.

This system contains measures 252 through 256. The Vln I and Vln II&III staves have rests throughout. The Vla, Vc., and Cb. staves continue with their respective rhythmic patterns.

257

Vln I  
Vln II&III  
Vla  
Vc.  
Cb.

*mf*

**K**

This system contains measures 257 through 262. Measures 257-261 feature a *mf* dynamic marking. A key signature change to one sharp (F#) is indicated by a box labeled 'K' above the Vln I staff in measure 258. The Vln I and Vln II&III staves have notes in measures 257-261, with a long melodic line in Vln I starting in measure 258. The Vla, Vc., and Cb. staves continue with their patterns.

263

Vln I  
Vln II&III  
Vla  
Vc.  
Cb.

This system contains measures 263 through 267. The Vln I and Vln II&III staves have notes throughout, with a melodic line in Vln I. The Vla, Vc., and Cb. staves continue with their patterns.

269

Vln I  
Vln II&III  
Vla  
Vc.  
Cb.

Detailed description: This system covers measures 269 to 274. It features five staves: Violin I, Violin II & III, Viola, Violoncello, and Contrabass. The Violin I part has a melodic line with slurs and accents. The Violin II & III part provides harmonic support with sustained notes. The Viola part has a similar melodic line to the Violin I. The Violoncello and Contrabass parts play a rhythmic pattern of eighth notes with slurs and accents.

275

Vln I  
Vln II&III  
Vla  
Vc.  
Cb.

Detailed description: This system covers measures 275 to 281. The Violin I part continues its melodic line. The Violin II & III part has a more active role with sixteenth-note patterns. The Viola part has a melodic line with slurs. The Violoncello and Contrabass parts continue their rhythmic pattern with slurs and accents.

282

Vln I  
Vln II&III  
Vla  
Vc.  
Cb.

Detailed description: This system covers measures 282 to 285. The Violin I part has a melodic line with slurs. The Violin II & III part has a melodic line with slurs. The Viola part has a melodic line with slurs. The Violoncello and Contrabass parts have a melodic line with slurs. A dynamic marking of *p* is present at the start of measure 282.

286

Vln I  
Vln II&III  
Vla  
Vc.  
Cb.

*f* *ff* *p*

*f* *ff* *p*

*f* *ff* *p*

*f* *ff* *p*

Detailed description: This system covers measures 286 to 291. It features five staves: Violin I, Violin II & III, Viola, Violoncello, and Contrabass. The Violin I part has a melodic line with slurs and accents. The Violin II & III part has a melodic line with slurs. The Viola part has a melodic line with slurs. The Violoncello and Contrabass parts have a melodic line with slurs. Dynamic markings of *f*, *ff*, and *p* are present. A tempo marking of  $\text{♩} = 130$  is present at the start of measure 286, and  $\text{♩} = 100$  is present at the start of measure 287.