



Tremolada Roberto

Italie

12)Il Grido della Vittoria (dal Poema Sinfonico per Orchestra LA BATTAGLIA DEI RODITORI E DELLE RANOCCHIE)

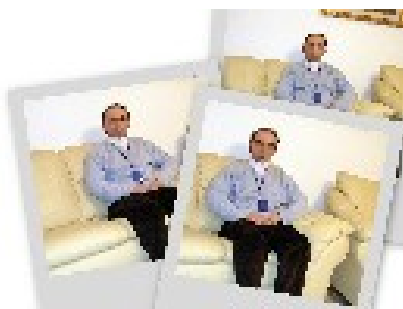
A propos de l'artiste

Nom Tremolada Nom Roberto Date de naissance 5 Juin 1961 Lieu de naissance Monza Adresse Via N. Bixio 15 - 20046 Biassono MI Téléphone 3475158471 - 393934234541 E-mail idrafilm2000@msn.com Site Web <http://roberto2000.altervista.org/> Profil Parolier et compositeur pour l'écriture Monzese SIAE Diplôme en électricité et électronique, est né à Monza en 1961 et est situé dans le monde de la musique de la tradition famille son oncle Gabriel a été Brioschi violon et orchestre. Il a étudié la musique comme une autodidacte dans les livres édités par Piccolo Milan Conservatoire... (la suite en ligne)

Qualification : SIAE de qualification, compositeur et parolier

Page artiste : https://www.free-scores.com/partitions_gratuites_roberto2000.htm

A propos de la pièce



Titre : 12)Il Grido della Vittoria (dal Poema Sinfonico per Orchestra LA BATTAGLIA DEI RODITORI E DELLE RANOCCHIE)

Compositeur : Roberto, Tremolada

Arrangeur : Roberto, Tremolada

Droit d'auteur : Tremolada Roberto © All rights reserved

Instrumentation : Orchestre

Style : Classique

Commentaire : le poème symphonique pour Orchestra LA BATAILLE de rongeurs et de Ranocchia (Poema nom de G. Leopardi)

Tremolada Roberto sur [free-scores.com](https://www.free-scores.com)



Cette partition ne fait pas partie du domaine public. Merci de contacter l'artiste pour toute utilisation hors du cadre privé.



- écouter l'audio
- partager votre interprétation
- commenter la partition
- contacter l'artiste

Il Grido della Vittoria

Roberto Tremolada

Proprietà per tutti i paesi: Edizioni Musicali MG s.a.s. Via Lenza 26, 03032 Grottole (AV)
© Copyright 2008 by Edizioni Musicali MG s.a.s.
Tutti i diritti sono riservati a termini di Legge. All rights reserved International copyright secured

Andante Arlesco ♩ = 85

The score is for a piece titled "Il Grido della Vittoria" in the tempo "Andante Arlesco" with a metronome marking of 85. The key signature has one sharp (F#) and the time signature is 4/4. The instruments and parts include:

- Piano:** Starts with a piano (*p*) dynamic, moving through *mp* and *mf* to a fortissimo (*mf*) dynamic.
- Arpa:** Features a melodic line with a mezzo-piano (*mp*) dynamic.
- Coro:** Two vocal parts, both of which are silent on this page.
- Flauto1 & Flauto2:** Silent parts.
- Ottavino:** Features a melodic line with a pianissimo (*pp*) dynamic.
- Oboe:** Silent part.
- Clarinetti1 & Clarinetto2:** Silent parts.
- Fagotto:** Silent part.
- Corno in Fa:** Silent part.
- Tromba1 Sib & Tromba 2 Sib:** Silent parts.
- Trombone Sib:** Silent part.
- Tuba:** Silent part.
- Timpani:** Silent part.
- Tamburi:** Features a rhythmic pattern with a *castanets* marking.
- Piatto:** Silent part.
- Camp. Tub.:** Silent part.
- Violini1 & Violini2:** Violin 1 has a *ppp* dynamic, while Violin 2 has a *mp* dynamic.
- Viola:** Features a melodic line with a *mp* dynamic.
- Violonc. & Contr. basso:** Silent parts.

This page contains the musical score for the third part of 'Il Gido della Vittoria'. The score is arranged in a standard orchestral format with the following parts:

- Ph.** (Piano): Two staves, both showing whole rests.
- Harp**: Two staves, both showing whole rests.
- Cor.** (Choir): Two staves, both showing whole rests.
- Fl. 1 & 2**: Two staves, both showing whole rests.
- Ottav.** (Oboe): One staff with a melodic line starting in the first measure.
- Ob.** (Clarinet): One staff showing whole rests.
- Cl. 1 & 2**: Two staves showing whole rests.
- Fag.** (Bassoon): One staff showing whole rests.
- Corn. Fa.** (French Horn): One staff showing whole rests.
- Tr. 1 Sib.** (Trumpet): One staff showing whole rests.
- Tr. 2 Sib.** (Trumpet): One staff showing whole rests.
- Tromb. Sib.** (Trombone): One staff showing whole rests.
- Tub.** (Tuba): One staff showing whole rests.
- Timp.** (Timpani): One staff showing whole rests.
- Tamb.** (Tambourine): One staff showing whole rests.
- Plat.** (Cymbal): One staff showing whole rests.
- Camp. Tub.** (Cymbal): One staff with a melodic line starting in the first measure.
- VI. 1** (Violin I): One staff with a melodic line starting in the first measure, marked *mp*.
- VI. 2** (Violin II): One staff with a melodic line starting in the first measure, marked *mp*.
- VI. 2** (Violin II): One staff with a melodic line starting in the first measure, marked *mp*.
- Viol.** (Viola): One staff with a melodic line starting in the first measure, marked *mp*.
- Violonc.** (Violoncello): One staff with a melodic line starting in the first measure, marked *mf*.
- Violonc.** (Violoncello): One staff with a melodic line starting in the first measure, marked *mf*.
- Cont.** (Contrabasso): One staff with a melodic line starting in the first measure, marked *mf*.

Rehearsal marks are indicated by square boxes containing the numbers 16, 17, 18, and 19. The score includes various musical notations such as rests, notes, and dynamic markings.

This page contains the musical score for the fourth page of 'Il Gido della Vittoria'. The score is arranged in a standard orchestral format with the following parts:

- Ph.** (Piano): Two staves (treble and bass clef).
- Arp.** (Harp): Two staves (treble and bass clef).
- Choir**: Two staves (treble and bass clef).
- Fl.** (Flutes): Flute 1 and Flute 2 staves.
- Ottav.** (Oboe): Oboe staff.
- Ob.** (Clarinet): Clarinet staff.
- Cl. 1** (Clarinete): Clarinet in B-flat staff.
- Cl. 2** (Clarinete): Clarinet in A staff.
- Fag.** (Fagotto): Bassoon staff.
- Corn. Fa** (Corni): French Horn staff.
- Tr. 1 Sib** (Trombe): Trumpet in B-flat staff.
- Tr. 2 Sib** (Trombe): Trumpet in B-flat staff.
- Tromb. Sib** (Trombe): Trombone in B-flat staff.
- Tub.** (Tuba): Tuba staff.
- Temp.** (Timpone): Timpani staff.
- Tamb.** (Tamburo): Drum staff.
- Piat.** (Piatello): Cymbal staff.
- Camp. Tub.** (Campi): Gong staff.
- VI. 1** (Violini): Violin 1 staff.
- VI. 2** (Violini): Violin 2 staff.
- VI. 2** (Violini): Violin 2 staff (repeated).
- Viol.** (Viola): Viola staff.
- Violonc.** (Violoncelli): Violoncello staff.
- Violonc.** (Violoncelli): Violoncello staff (repeated).
- Contr.** (Contrabbassi): Double Bass staff.

The score includes various musical notations such as notes, rests, and dynamic markings like *f* (forte), *mf* (mezzo-forte), and *p* (piano). There are also rehearsal marks (12-16) and a copyright notice at the bottom.

This page contains the musical score for the fifth page of 'Il Grido della Vittoria'. The score is arranged in a standard orchestral format with multiple staves for each instrument and a choir. The instruments listed on the left include:

- Ph. (Piccolo)
- Arp. (Harp)
- Choir
- Fl. 1 and Fl. 2 (Flutes)
- Ottav. (Oboe)
- Ob. (Clarinet)
- Cl. 1 and Cl. 2 (Clarinets)
- Fag. (Bassoon)
- Corn. Fa. (French Horn)
- Tr. 1 Sib. and Tr. 2 Sib. (Trumpets)
- Tromb. Sib. (Trombone)
- Tub. (Tuba)
- Temp. (Timpani)
- Tamb. (Tambourine)
- Piat. (Cymbal)
- Camp. Tub. (Snare Drum)
- VI. 1 and VI. 2 (Violins)
- VI. 2 (Violas)
- Viol. (Violoncello)
- Violonc. (Double Bass)
- Contr. (Contra Bass)

The score includes various musical notations such as notes, rests, dynamics (e.g., *f*, *tr*), and performance instructions like 'concerti BD 1' and 'Set'. The page is numbered 5 in the top right corner.

This page contains the musical score for the sixth page of 'Il Grido della Vittoria'. The score is arranged in a standard orchestral format with the following parts from top to bottom:

- Ph.** (Piano): Two staves, both in treble clef.
- Arp.** (Harp): Two staves, both in treble clef.
- Choir**: Two staves, both in treble clef.
- Fl.1** (Flute 1): Treble clef.
- Fl.2** (Flute 2): Treble clef.
- Ob.** (Oboe): Treble clef.
- Cl.1** (Clarinet 1): Treble clef.
- Cl.2** (Clarinet 2): Treble clef.
- Fag.** (Bassoon): Bass clef.
- Cor. Fa** (Cornet in F): Treble clef.
- Tr. 1-9b** (Trumpet 1-9 in B-flat): Treble clef.
- Tr. 2-3b** (Trumpet 2-3 in B-flat): Treble clef.
- Tromb. Sib.** (Trombone in B-flat): Bass clef.
- Tub.** (Tuba): Bass clef.
- Timp.** (Timpani): Bass clef.
- Tamb.** (Tambourine): Bass clef.
- Plat.** (Plateau): Bass clef.
- Camp. Tub.** (Cymbal/Tuba): Bass clef.
- VI.1** (Violin 1): Treble clef.
- VI.2** (Violin 2): Treble clef.
- VI.2** (Violin 2): Treble clef.
- Viol.** (Viola): Treble clef.
- Violonc.** (Violoncello): Bass clef.
- Violonc.** (Violoncello): Bass clef.
- Contr.** (Contrabasso): Bass clef.

The score includes various musical notations such as notes, rests, and dynamic markings. A large harp part is visible in the upper middle section, and there are some specific markings like 'Fm' and 'Lam' above the Violin 1 staff.

This page contains the musical score for the seventh page of 'Il Grido della Vittoria'. The score is arranged in a standard orchestral format with multiple staves for each instrument and a choir. The instruments listed on the left include:

- Ph. (Piccolo)
- Arp. (Harp)
- Fl. 1 and Fl. 2 (Flutes)
- Ob. (Oboe)
- Cl. 1 and Cl. 2 (Clarinets)
- Fag. (Bassoon)
- Cor. Fa (Corn in F)
- Tr. 1 Bb and Tr. 2 Bb (Trumpets)
- Tromb. Sib (Trombone in Bb)
- Tub. (Tuba)
- Timp. (Timpani)
- Tamb. (Tambourine)
- Piat. (Cymbal)
- Camp. Tub. (Cymbal)
- VI. 1 and VI. 2 (Violins)
- Viol. (Viola)
- Violonc. (Violoncello)
- Cont. (Contrabasso)

The score includes various musical notations such as notes, rests, and dynamic markings like 'f' (forte). There are also rehearsal marks and a 'Coda' symbol at the end of the page.

This page contains the musical score for the eighth page of 'Il Grido della Vittoria'. The score is arranged in a standard orchestral format with multiple staves for each instrument and a choir. The instruments listed on the left include: Ph. (Piccolo), Harp, Cor. (Coro), Fl. 1 & 2, Oboe, Clarinet 1 & 2, Bassoon, Corn. Fa., Tr. 1 & 2 (Trumpets), Tromb. Sib. (Trombone), Tub. (Tuba), Tamb. (Tambourine), Plat. (Plateau), Camp. Tub. (Cymbal), VI. 1 & 2 (Violins), Viol. (Viola), Violonc. (Violoncello), and Contr. (Contrabasso). The score features dynamic markings such as *f* (forte), *p* (piano), *cresc.* (crescendo), and *fff* (fortissimo). The Harp part includes a complex, rapid arpeggiated figure. The woodwinds and strings play sustained notes with dynamic swells. The percussion parts include rhythmic patterns on the tambourine and cymbal. The choir parts are marked with *f* and *fff* dynamics. The score is written in a common time signature and includes various musical notations such as slurs, accents, and dynamic hairpins.