

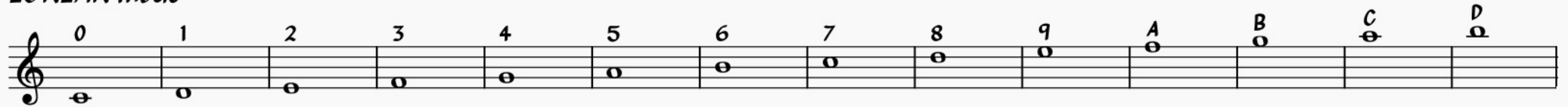
Foundmusic in Pi, base 14

A Looking-glass Canon

created with the first fifteen digits mapped into IONIAN mode

3.1DA75 CDA81 3754

IONIAN mode



♩ = 118 Original melody ... and its Reflection D Sheldon

A musical score in 2/4 time. The top staff is the original melody, starting with a treble clef and a 2/4 time signature. The bottom staff is the reflection, starting with a bass clef and a 2/4 time signature. The melody is written in treble clef. The notes are: 3 1 D A 7 5 C D A 8 1 3 7 5 4. The reflection is written in bass clef. The notes are: 4 5 7 3 1 A C 5 7 A 8 1 3 7 5 4.

17 R and O exactly together

A musical score in 2/4 time. The top staff is the original melody, starting with a treble clef and a 2/4 time signature. The bottom staff is the reflection, starting with a bass clef and a 2/4 time signature. The melody is written in treble clef. The notes are: 4 5 7 3 1 A C 5 7 A 8 1 3 7 5 4. The reflection is written in bass clef. The notes are: 4 5 7 3 1 A C 5 7 A 8 1 3 7 5 4.

25 O and O 2bars displaced

A musical score in 2/4 time. The top staff is the original melody, starting with a treble clef and a 2/4 time signature. The bottom staff is the reflection, starting with a bass clef and a 2/4 time signature. The melody is written in treble clef. The notes are: 4 5 7 3 1 A C 5 7 A 8 1 3 7 5 4. The reflection is written in bass clef. The notes are: 4 5 7 3 1 A C 5 7 A 8 1 3 7 5 4.

2

R and R 2bars displaced

35

O and O+ 2bars displaced

45

R and R+ 2bars displaced

55

and finally...

65