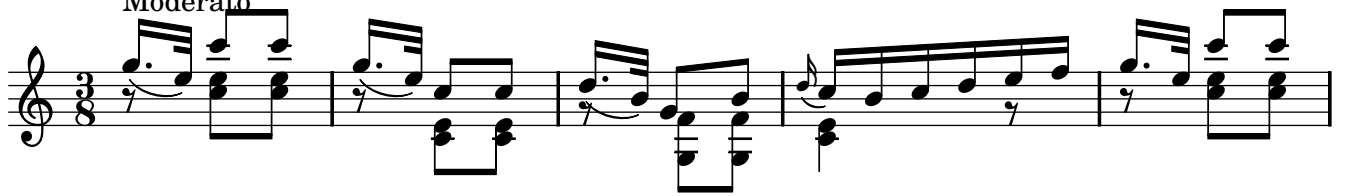
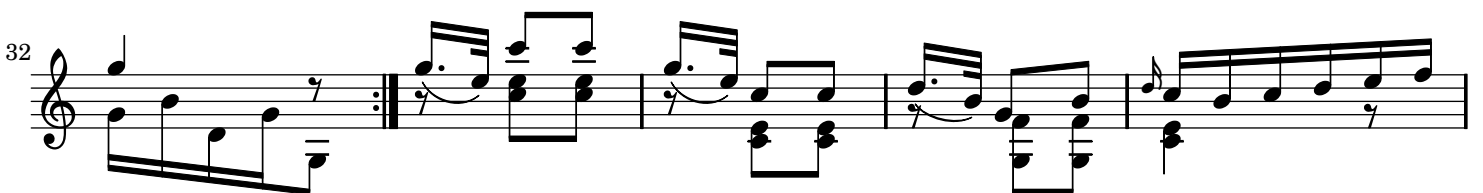
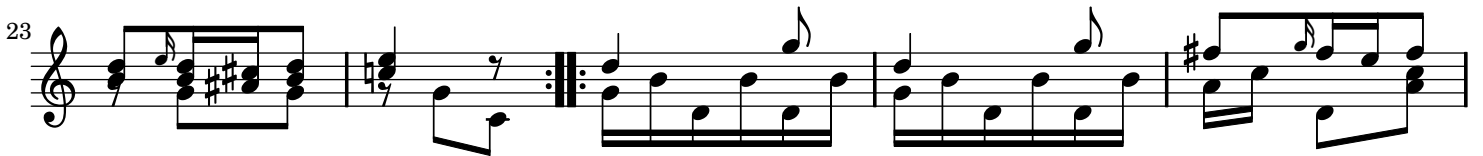
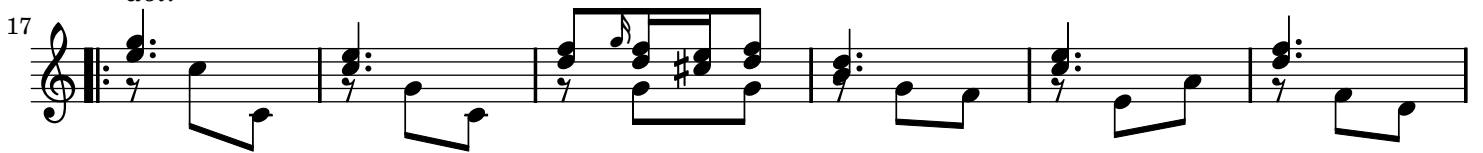


## Valse

Fernando Sor

Moderato

*dol.*

43



The image shows a musical score for measures 43 through 48. The music is written on a single staff with a treble clef. Measure 43 begins with a treble clef and a key signature of one flat. The melody consists of eighth and quarter notes, with some beamed eighth notes. The bass line is mostly whole notes and half notes. Measure 44 continues the melody with a quarter rest in the bass line. Measure 45 features a descending eighth-note scale in the melody and quarter notes in the bass. Measure 46 has a similar descending eighth-note scale in the melody. Measure 47 continues the descending eighth-note scale in the melody. Measure 48 ends with a quarter note in the melody and a quarter rest in the bass line, followed by a double bar line.