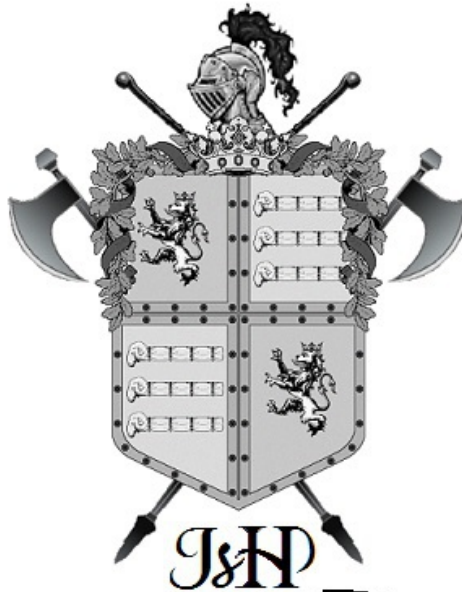


WALZER à la Paganini

von

Johann Strauss

Transposed & Arranged for Solo Cello



MS, US

04/07/2017



a' la' Paganini

Walzer 1

Strauss

1

6

11

15

20

24

29

33

37

a' la' Paganini

Walzer 2

Strauss

6

Measures 1-5: Bass clef, key signature of two sharps (F# and C#), 3/4 time signature. Measure 1 starts with a repeat sign. The melody features eighth and sixteenth notes with accents and slurs.

6

Measures 6-9: Continuation of the melody. Measure 6 has a repeat sign. Measure 9 ends with a double bar line.

10

Measures 10-14: Continuation of the melody. Measure 14 ends with a double bar line.

15

Measures 15-18: Continuation of the melody. Measure 18 ends with a double bar line.

19

Measures 19-23: Continuation of the melody. Measure 23 ends with a double bar line.

24

Measures 24-27: Continuation of the melody. Measure 27 ends with a double bar line.

28

Measures 28-32: Continuation of the melody. Measure 32 ends with a double bar line.

33

Measures 33-36: Continuation of the melody. Measure 36 ends with a double bar line.

a' la' Paganini

Walzer 3

Strauss

6

10

14

19

23

27

31

36

4

a' la' Paganini

Walzer 4

Strauss

1

6

10

15

19

24

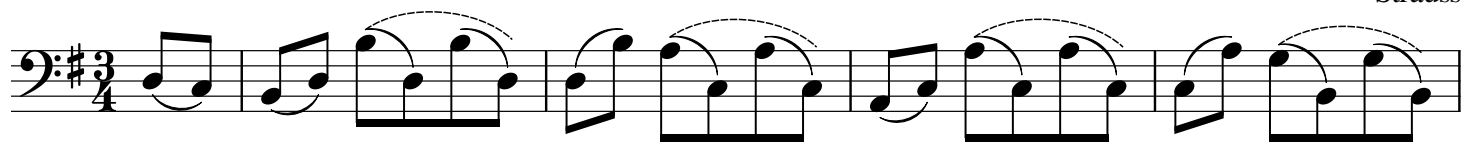
28

33

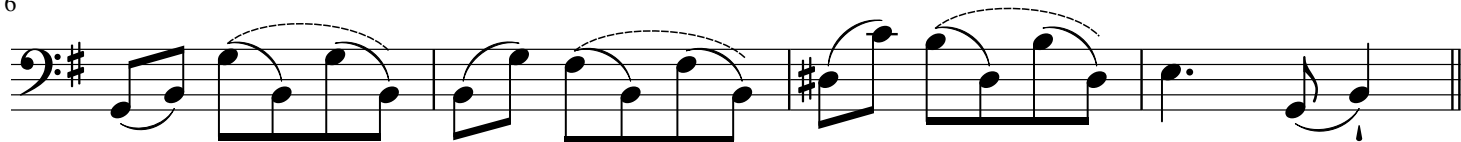
a' la' Paganini

Walzer 5

Strauss



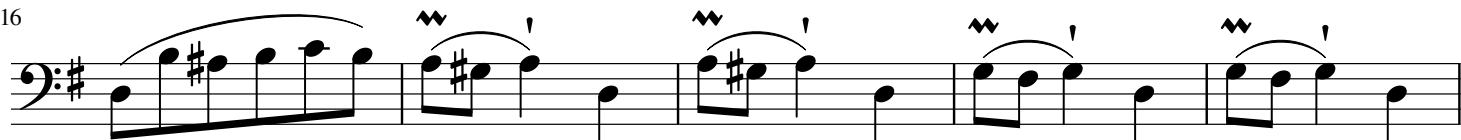
6



10



16



21



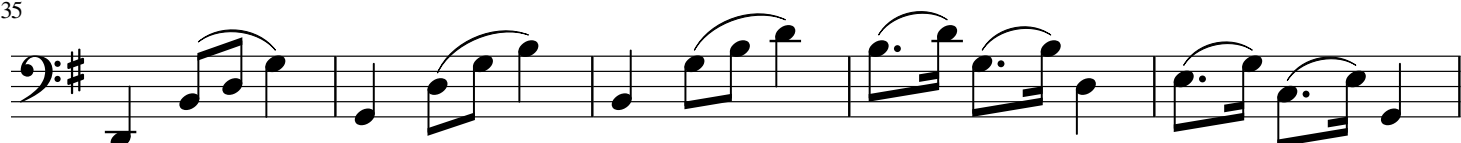
25



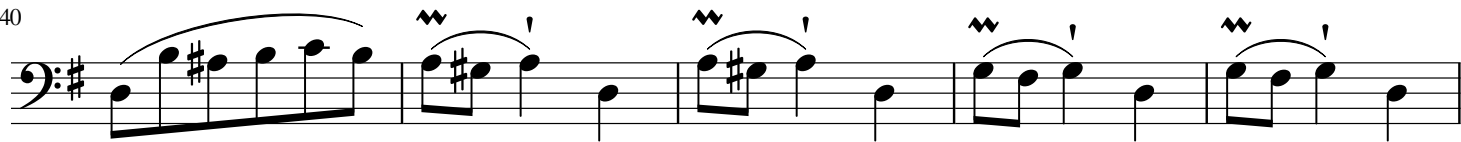
30



35



40



45



a' la' Paganini

Walzer 6

Strauss

1

Measures 1-5: Bass clef, key signature of two sharps (F# and C#), 3/4 time signature. The music begins with a repeat sign. The first measure contains a quarter rest followed by a quarter note F#4. The subsequent measures feature eighth-note patterns with slurs and accents, often moving in a stepwise fashion.

6

Measures 6-10: Continuation of the eighth-note patterns from the previous system, maintaining the same rhythmic and melodic motifs.

11

Measures 11-15: The eighth-note patterns continue, with some measures showing a change in the lower voice part.

16

Measures 16-19: Further development of the eighth-note patterns, leading towards the end of the system.

20

Measures 20-24: Continuation of the eighth-note patterns, showing a slight variation in the melodic line.

25

Measures 25-29: Continuation of the eighth-note patterns, maintaining the characteristic rhythmic feel.

30

Measures 30-34: The eighth-note patterns continue, with some measures featuring a more active bass line.

35

Measures 35-38: Final measures of the system, ending with a repeat sign and a fermata over the final note.

a' la' Paganini

Coda

Strauss

First staff of music, measures 1-5. Bass clef, key signature of two sharps (F# and C#), 3/4 time signature. The melody begins with a quarter note G2, followed by a quarter note A2 with an accent (>), and a quarter note B2 with an accent (>). The next measure contains a quarter note C3, a quarter note D3, and a quarter note E3. The fifth measure contains a quarter note F#3, a quarter note G#3, and a quarter note A3.

Second staff of music, measures 6-10. Measure 6: quarter note B2, quarter note C3, quarter note D3. Measure 7: quarter note E3, quarter note F#3, quarter note G#3. Measure 8: quarter note A3, quarter note B3, quarter note C4. Measure 9: quarter note D4, quarter note E4, quarter note F#4. Measure 10: quarter note G4, quarter note A4, quarter note B4.

Third staff of music, measures 11-16. Measure 11: quarter note C5, quarter note D5, quarter note E5. Measure 12: quarter note F#5, quarter note G#5, quarter note A5. Measure 13: quarter note B5, quarter note C6, quarter note D6. Measure 14: quarter note E6, quarter note F#6, quarter note G#6. Measure 15: quarter note A6, quarter note B6, quarter note C7. Measure 16: quarter note D7, quarter note E7, quarter note F#7.

Fourth staff of music, measures 17-21. Measure 17: quarter note G7, quarter note A7, quarter note B7. Measure 18: quarter note C8, quarter note D8, quarter note E8. Measure 19: quarter note F#8, quarter note G#8, quarter note A8. Measure 20: quarter note B8, quarter note C9, quarter note D9. Measure 21: quarter note E9, quarter note F#9, quarter note G#9.

Fifth staff of music, measures 22-26. Measure 22: quarter note A9, quarter note B9, quarter note C10. Measure 23: quarter note D10, quarter note E10, quarter note F#10. Measure 24: quarter note G#10, quarter note A10, quarter note B10. Measure 25: quarter note C11, quarter note D11, quarter note E11. Measure 26: quarter note F#11, quarter note G#11, quarter note A11.

Sixth staff of music, measures 27-31. Measure 27: quarter note B11, quarter note C12, quarter note D12. Measure 28: quarter note E12, quarter note F#12, quarter note G#12. Measure 29: quarter note A12, quarter note B12, quarter note C13. Measure 30: quarter note D13, quarter note E13, quarter note F#13. Measure 31: quarter note G#13, quarter note A13, quarter note B13.

Seventh staff of music, measures 32-35. Measure 32: quarter note C14, quarter note D14, quarter note E14. Measure 33: quarter note F#14, quarter note G#14, quarter note A14. Measure 34: quarter note B14, quarter note C15, quarter note D15. Measure 35: quarter note E15, quarter note F#15, quarter note G#15.

Eighth staff of music, measures 36-40. Measure 36: quarter note A15, quarter note B15, quarter note C16. Measure 37: quarter note D16, quarter note E16, quarter note F#16. Measure 38: quarter note G#16, quarter note A16, quarter note B16. Measure 39: quarter note C17, quarter note D17, quarter note E17. Measure 40: quarter note F#17, quarter note G#17, quarter note A17.

a' la' Paganini

Coda Continued

Strauss

41

Measures 41-44: Bass clef, key signature of two sharps (F# and C#). Measure 41 starts with a quarter note G2, followed by a quarter note A2, and a quarter note B2. Measure 42 has a quarter note C#3, a quarter note D3, and a quarter note E3. Measure 43 has a quarter note F#3, a quarter note G3, and a quarter note A3. Measure 44 has a quarter note B3, a quarter note C4, and a quarter note D4.

45

Measures 45-49: Bass clef, key signature of two sharps. Measure 45 has a quarter note E3, a quarter note F#3, and a quarter note G3. Measure 46 has a quarter note A3, a quarter note B3, and a quarter note C4. Measure 47 has a quarter note D4, a quarter note E4, and a quarter note F#4. Measure 48 has a quarter note G4, a quarter note A4, and a quarter note B4. Measure 49 has a quarter note C5, a quarter note B4, and a quarter note A4.

50

Measures 50-54: Bass clef, key signature of two sharps. Measure 50 has a quarter note G4, a quarter note A4, and a quarter note B4. Measure 51 has a quarter note C5, a quarter note B4, and a quarter note A4. Measure 52 has a quarter note G4, a quarter note F#4, and a quarter note E4. Measure 53 has a quarter note D4, a quarter note C4, and a quarter note B3. Measure 54 has a quarter note A3, a quarter note G3, and a quarter note F#3.

55

Measures 55-59: Bass clef, key signature of two sharps. Measure 55 has a quarter note E3, a quarter note F#3, and a quarter note G3. Measure 56 has a quarter note A3, a quarter note B3, and a quarter note C4. Measure 57 has a quarter note D4, a quarter note E4, and a quarter note F#4. Measure 58 has a quarter note G4, a quarter note A4, and a quarter note B4. Measure 59 has a quarter note C5, a quarter note B4, and a quarter note A4.

60

Measures 60-63: Bass clef, key signature of two sharps. Measure 60 has a quarter note G4, a quarter note A4, and a quarter note B4. Measure 61 has a quarter note C5, a quarter note B4, and a quarter note A4. Measure 62 has a quarter note G4, a quarter note F#4, and a quarter note E4. Measure 63 has a quarter note D4, a quarter note C4, and a quarter note B3.

64

Measures 64-68: Bass clef, key signature of two sharps. Measure 64 has a quarter note A3, a quarter note B3, and a quarter note C4. Measure 65 has a quarter note D4, a quarter note E4, and a quarter note F#4. Measure 66 has a quarter note G4, a quarter note A4, and a quarter note B4. Measure 67 has a quarter note C5, a quarter note B4, and a quarter note A4. Measure 68 has a quarter note G4, a quarter note F#4, and a quarter note E4.

69

Measures 69-72: Bass clef, key signature of two sharps. Measure 69 has a quarter note D4, a quarter note E4, and a quarter note F#4. Measure 70 has a quarter note G4, a quarter note A4, and a quarter note B4. Measure 71 has a quarter note C5, a quarter note B4, and a quarter note A4. Measure 72 has a quarter note G4, a quarter note F#4, and a quarter note E4.

73

Measures 73-76: Bass clef, key signature of two sharps. Measure 73 has a quarter note A3, a quarter note B3, and a quarter note C4. Measure 74 has a quarter note D4, a quarter note E4, and a quarter note F#4. Measure 75 has a quarter note G4, a quarter note A4, and a quarter note B4. Measure 76 has a quarter note C5, a quarter note B4, and a quarter note A4.