

Stell dich ein!

Ländliche Freuden.

Liebes Sternchen.



# BALL-RACKETTEN.

WALZER

für das

PIANO-FORTE

von

**JOHANN STRAUSS.**

196<sup>te</sup> Werk.

*Eigenthum der Verleger.*

*Eingetragen in das Archiv der vereinigten Musikalienhändler gegen Nachdruck.*

Sprühende Tanzluft.

Vergiß mein nicht!

Wien, bei Tobias Haslinger,

k. k. Hof- und privil. Kunst- und Musikalienhändler,  
Leipzig, in dessen Verlags-Expedition bei Hermann und Langbein.  
Berlin, bei T. Trautwein.

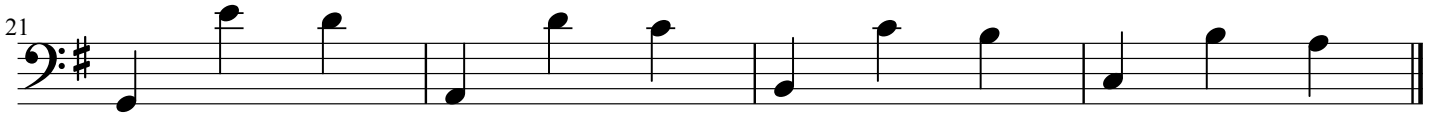
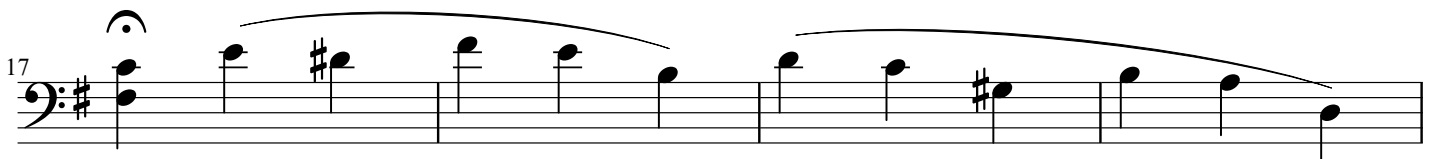
Preis  $\frac{45 \text{ r. C. M.}}{12 \text{ gr.}}$

N<sup>o</sup> 7351.

# Ball-Racketen

## Introduction

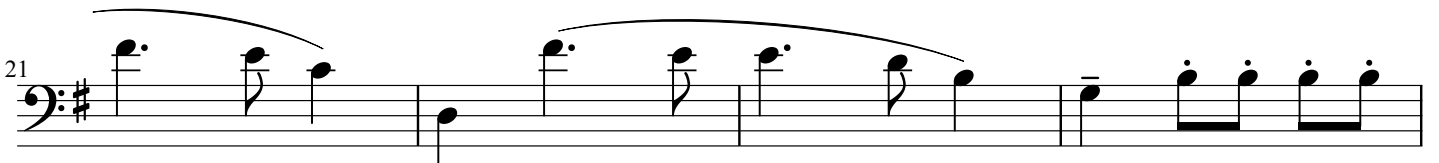
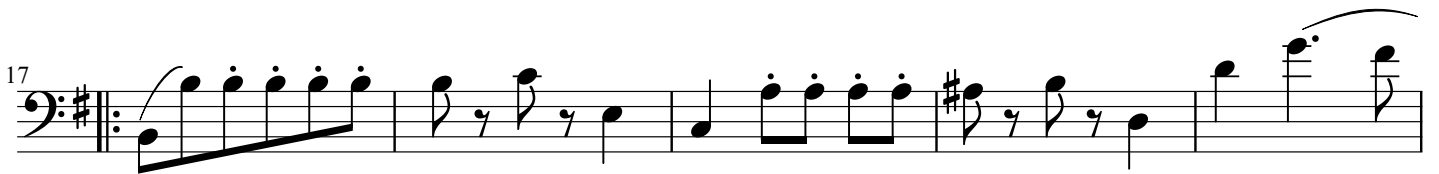
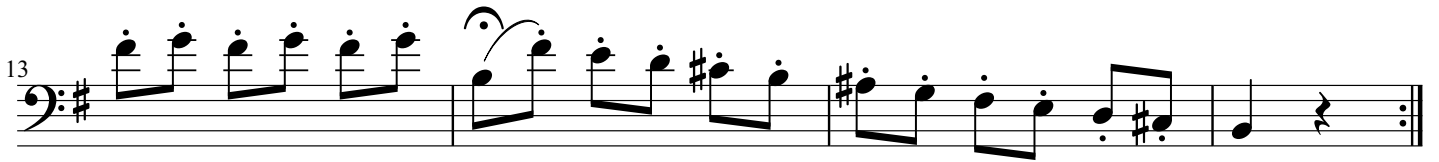
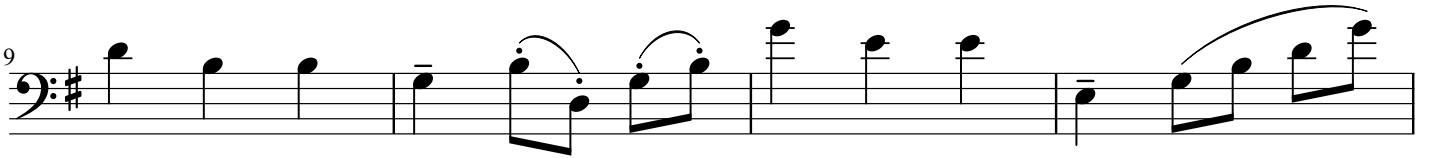
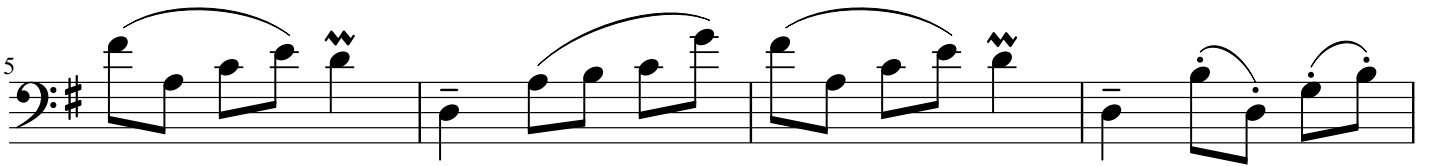
Strauss



# Ball-Racketen

Walzer 1

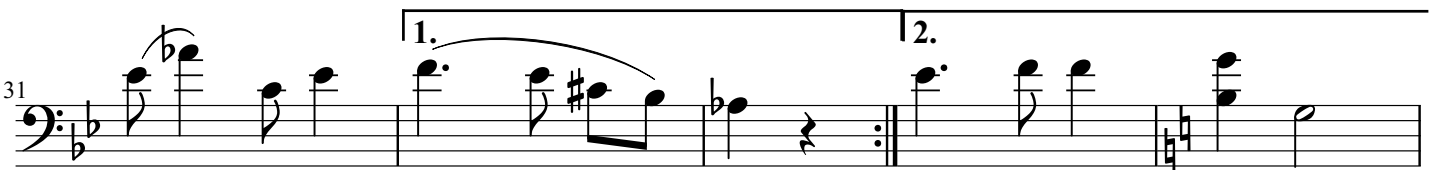
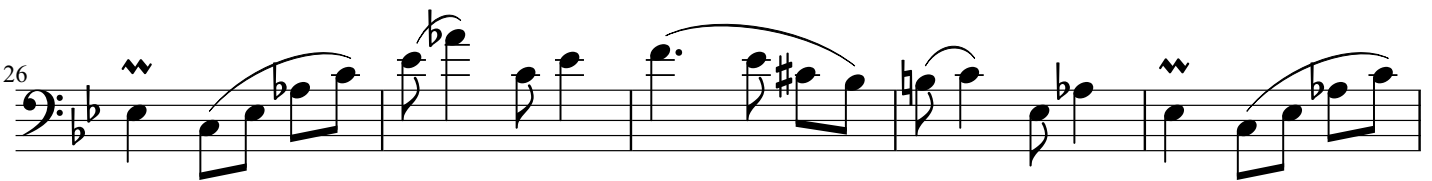
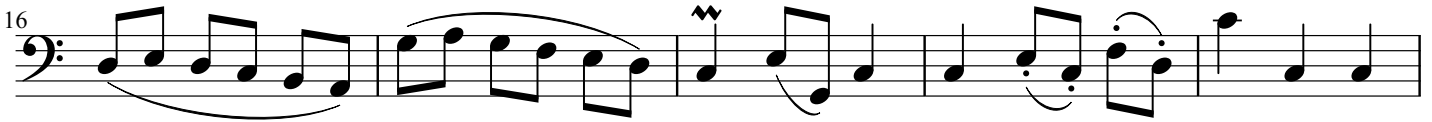
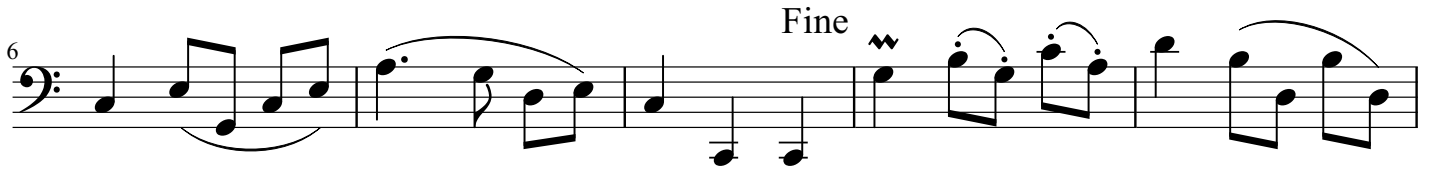
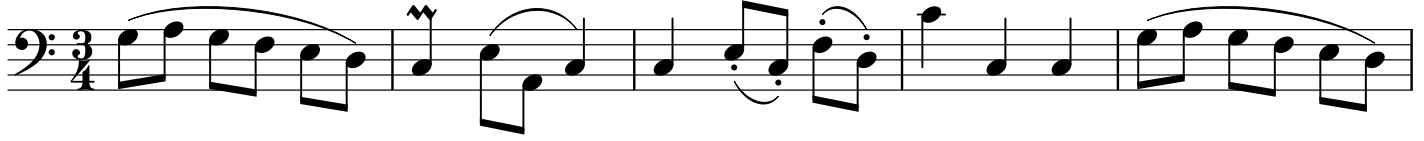
Strauss



# Ball-Racketen

Walzer 2

Strauss

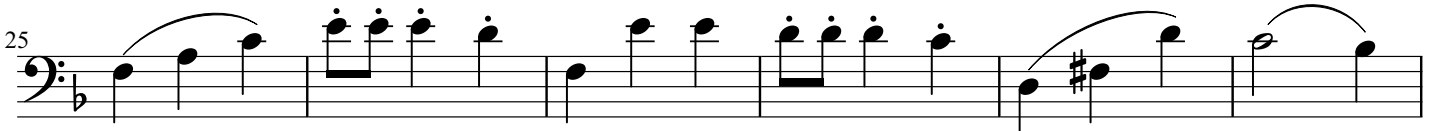
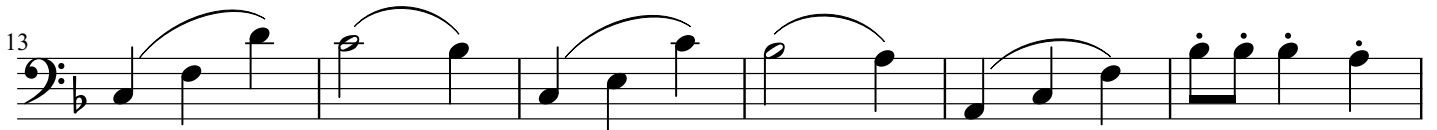
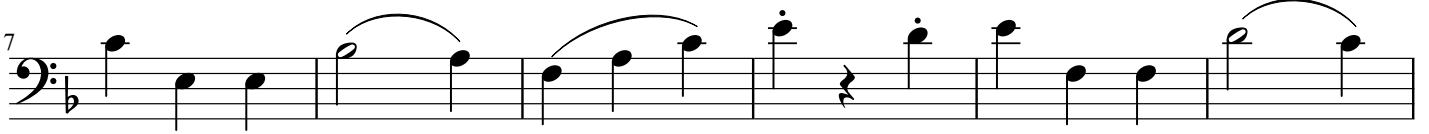


D.C. al Fine

# Ball-Racketen

Walzer 3

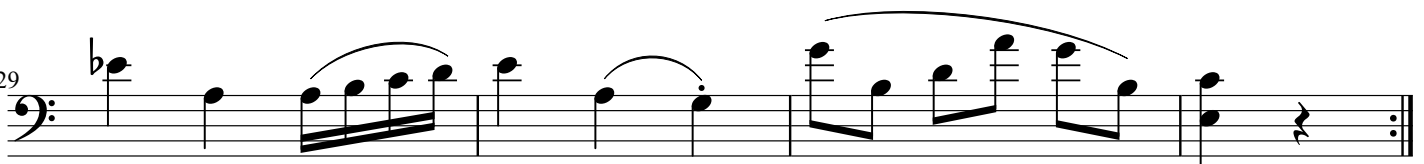
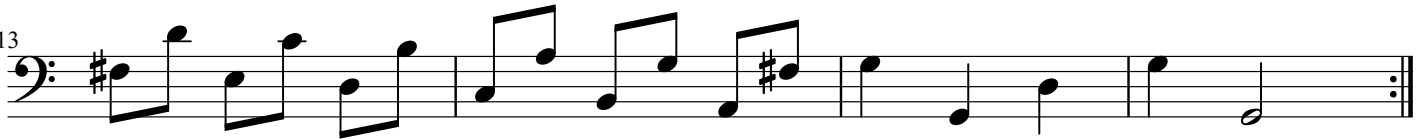
Strauss



# Ball-Racketen

Walzer 4

Strauss



# Ball-Racketen

Walzer 5

Strauss

Measures 1-5 of the bass line. The key signature is two flats (B-flat and E-flat). The time signature is 3/4. The music features a series of eighth and quarter notes with wavy hairpins above them, indicating a tremolo or vibrato effect.

Measures 6-10 of the bass line. Measure 10 is marked with a first ending bracket labeled '1.'. The music continues with eighth and quarter notes.

Measures 11-15 of the bass line. Measures 11 and 13 are marked with wavy hairpins above notes. The music continues with eighth and quarter notes.

Measures 16-20 of the bass line. Measure 16 is marked with a second ending bracket labeled '2.'. The music continues with eighth and quarter notes.

Measures 21-25 of the bass line. Measure 25 features a key signature change from two flats to one flat (B-flat). The music continues with eighth and quarter notes.

Measures 26-30 of the bass line. The key signature changes to one sharp (F#). The music continues with eighth and quarter notes.

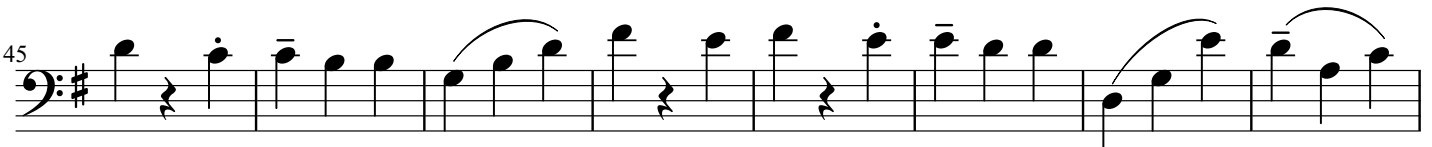
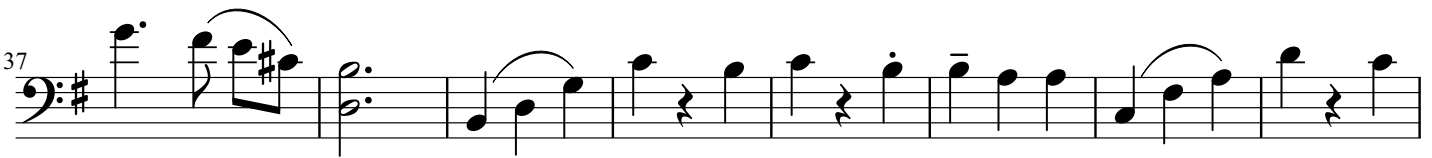
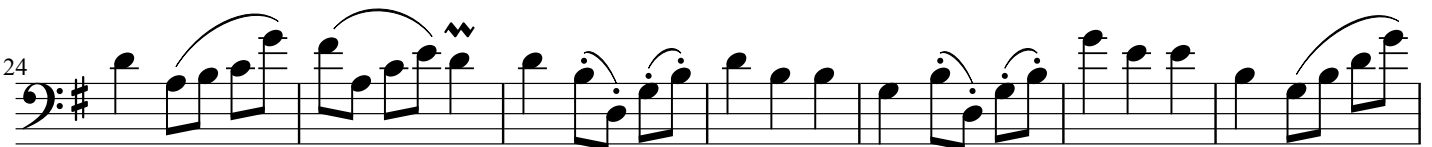
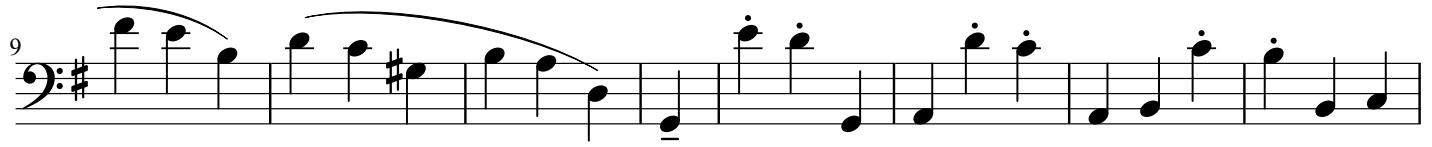
Measures 31-35 of the bass line. The key signature remains one sharp (F#). The music continues with eighth and quarter notes.

Measures 36-40 of the bass line. The key signature changes to two sharps (F# and C#). The music concludes with a double bar line and repeat dots.

# Ball-Racketen

Coda

Strauss





60 *tr*

67

73

1. 2.

80

87

95

102

110