

**Benefice-Walzer**

für das

**Piano - Forte**

von

**JOHANN STRAUSS.**

33<sup>tes</sup> Werk.

*Aufgeführt im Saale zum Sperrl.*

Eigenthum des Verlegers.

Preis — 30 c. M.

Wien, bei Tobias Haslinger

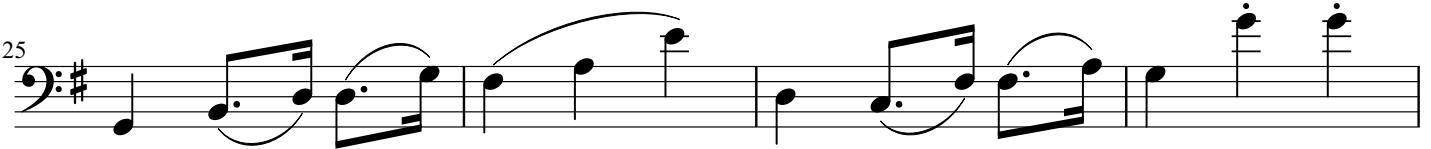
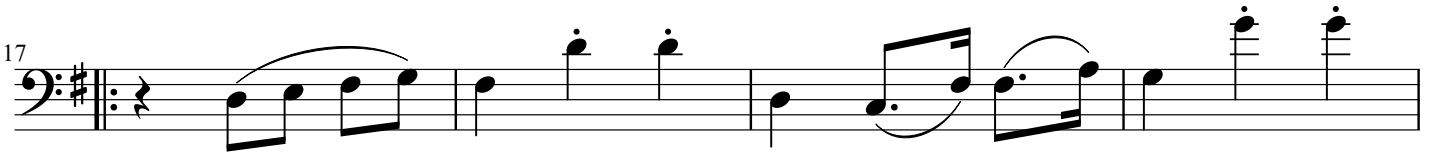
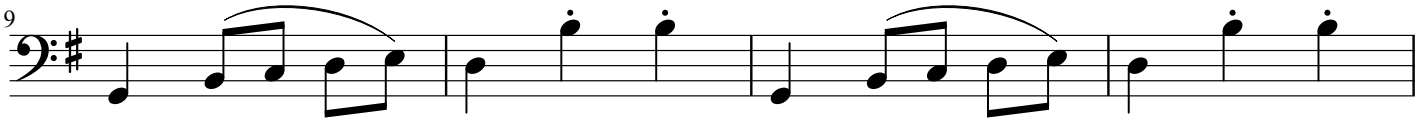
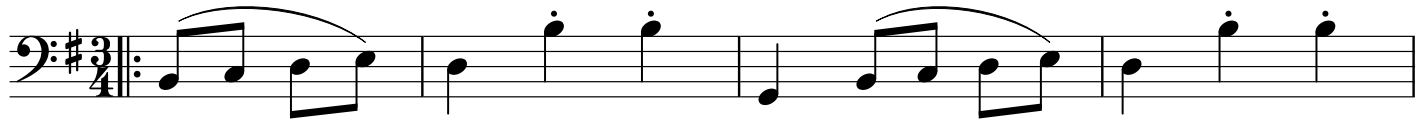
Graben, Sparkasse N<sup>o</sup> 512.

N<sup>o</sup> 5566.

# Benefice Waltz

Walzer 1

Strauss



# Benefice Waltz

Walzer 2

Strauss

1

5

9

13

17

21

25

29

33

*tr*

*tr*

# Benefice Waltz

Walzer 3

Strauss

Measures 1-4: Bass clef, key signature of one sharp (F#), 3/4 time signature. The first measure is a repeat sign. The melody consists of eighth notes with slurs and triplets. Measure numbers 1, 3, 3, and 3 are written below the notes.

Measures 5-8: Bass clef, key signature of one sharp (F#). Measure 5 is a repeat sign. The melody continues with eighth notes, slurs, and a trill (tr) in measure 7. Measure numbers 5 and 8 are written below the notes.

Measures 9-12: Bass clef, key signature of one sharp (F#). The melody features eighth notes with slurs and trills (tr) in measures 11 and 12. Measure numbers 9 and 12 are written below the notes.

Measures 13-16: Bass clef, key signature of one sharp (F#). The melody continues with eighth notes, slurs, and trills (tr) in measures 15 and 16. Measure numbers 13 and 16 are written below the notes.

Measures 17-20: Bass clef, key signature of one sharp (F#). The melody features eighth notes, slurs, and trills (tr) in measures 18 and 20. Measure numbers 17 and 20 are written below the notes.

Measures 21-24: Bass clef, key signature of one sharp (F#). Measure 21 is a repeat sign. The melody concludes with eighth notes, slurs, and a trill (tr) in measure 22. Measure numbers 21 and 24 are written below the notes.

D.C. al Fine

# Benefice Waltz

Walzer 4

Strauss

5

5

9

9

13

13

17

17

Fine

21

21

25

25

29

29

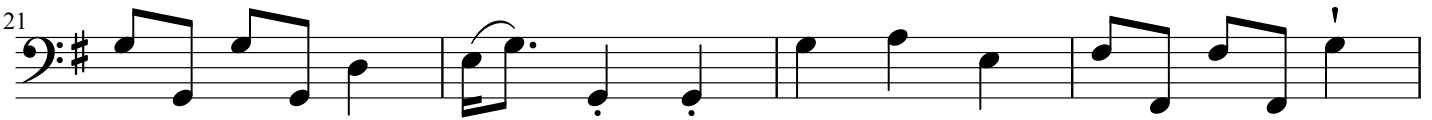
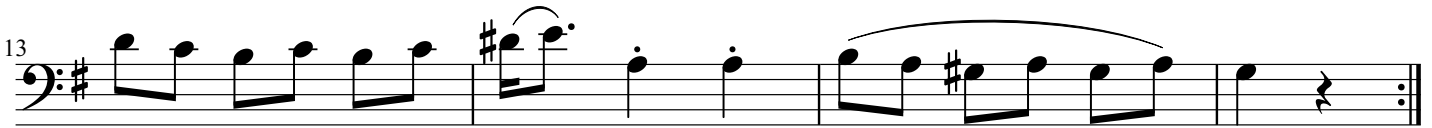
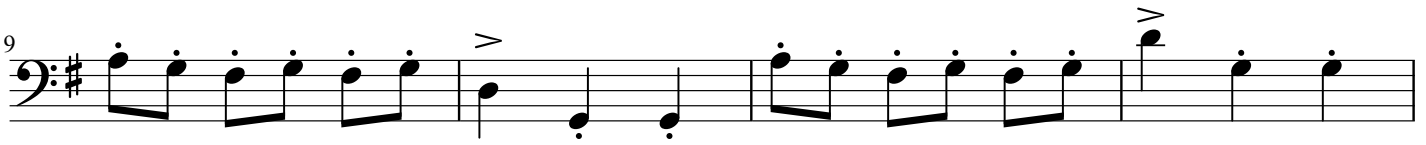
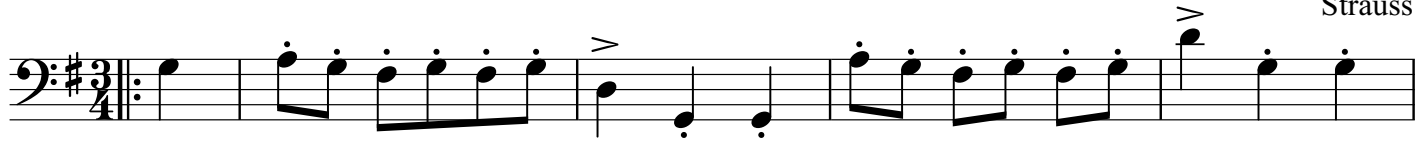
D.C. al Fine

D.C. al Fine

# Benefice Waltz

Walzer 5

Strauss



D.C. al Fine



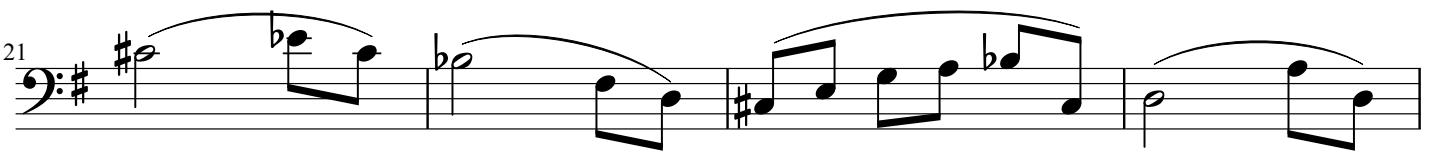
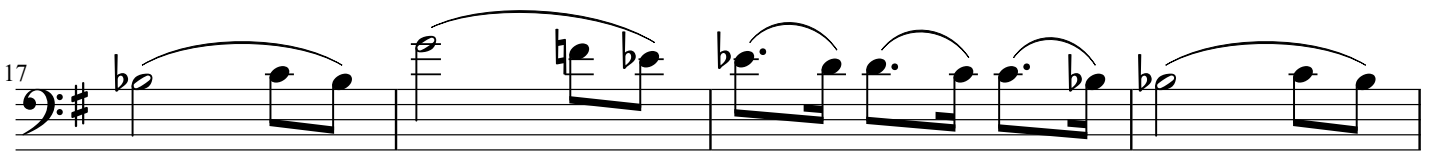
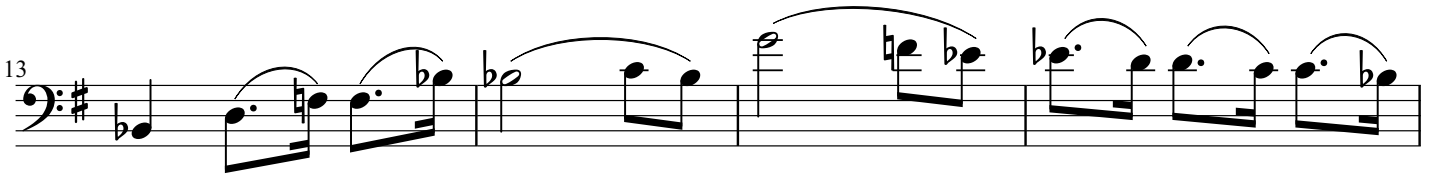
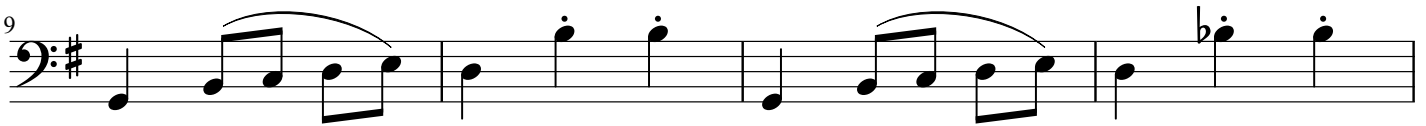
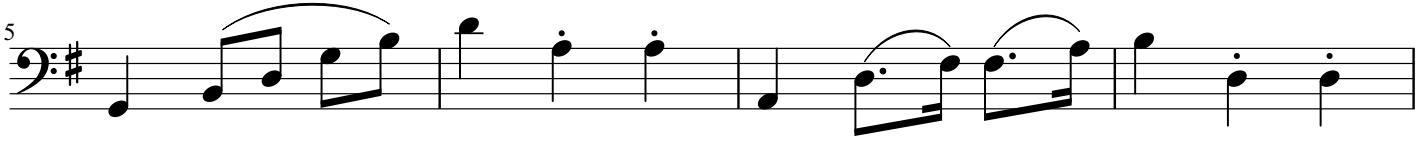


***Intermission***  
***Stay Tuned***  
***For***  
***Finale***

# Benefice Waltz

Coda

Strauss





# Benefice Waltz

Coda Cont.

