



WALZER

für das

Piano-Forte

von

JOH. STRAUSS.

14^{te} Lieferung der Tänze. — Eigentum der Verleger.

N^o 2972.

Pr. — 30 x C.M.

WIEN,

bei Ant. Diabelli und Comp.

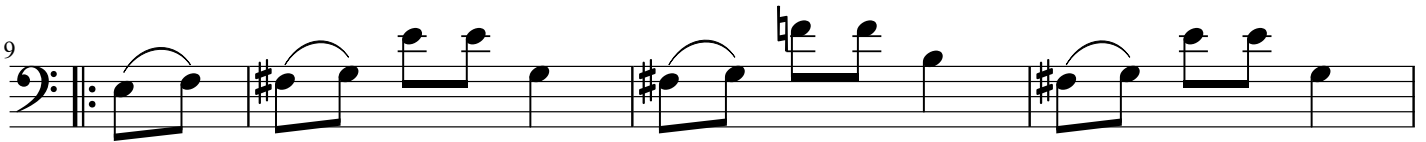
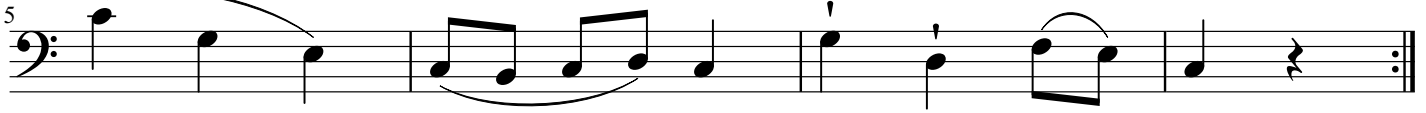
Garten N^o 1133.

Champagner Walzer

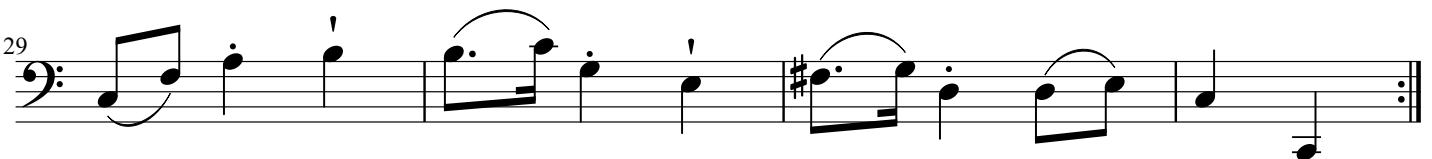
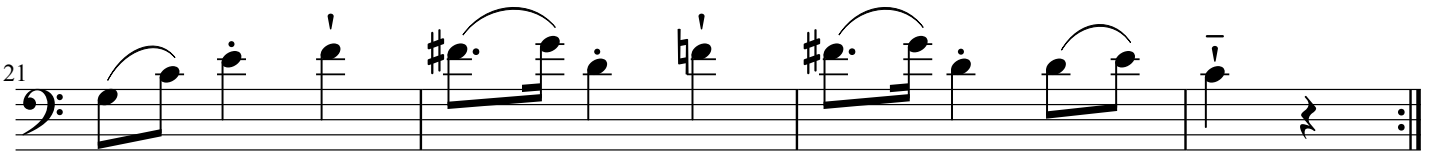
Walzer 1 & 2

Strauss

#1



#2



Champagner Walzer

Walzer 3

Strauss

5

9

13

17

21

25

29

32

Champagner Walzer

Walzer 4 & 5

Strauss

#4

#5

tr

Champagner Walzer

Trio

Strauss

First line of musical notation (measures 1-4) in bass clef, 3/4 time, key of D major. The melody consists of quarter notes and eighth notes with accents.

Second line of musical notation (measures 5-8) in bass clef, 3/4 time, key of D major. Measure 5 is marked with a '5'. The melody continues with quarter notes and eighth notes, ending with a repeat sign.

Third line of musical notation (measures 9-12) in bass clef, 3/4 time, key of D major. Measure 9 is marked with a '9'. The melody features a triplet of eighth notes in measure 9, followed by quarter notes.

Fourth line of musical notation (measures 13-16) in bass clef, 3/4 time, key of D major. Measure 13 is marked with a '13'. The melody continues with quarter notes and eighth notes.

Fifth line of musical notation (measures 17-20) in bass clef, 3/4 time, key of D major. Measure 17 is marked with a '17'. The melody consists of quarter notes and eighth notes with accents.

Sixth line of musical notation (measures 21-24) in bass clef, 3/4 time, key of D major. Measure 21 is marked with a '21'. The melody continues with quarter notes and eighth notes, ending with a repeat sign.

Champagner Walzer

Walzer 6

Strauss

Measures 1-4 of the bass line. The music is in 3/4 time and begins with a repeat sign. The notes are: G2, A2, B2, C3, D3, E3, F3, G3, A3, B3, C4, D4, E4, F4, G4, A4, B4, C5. There are accents over the notes from measure 3 onwards.

Measures 5-8 of the bass line. The notes are: G3, A3, B3, C4, D4, E4, F4, G4, A4, B4, C5, D5, E5, F5, G5, A5, B5, C6. There are accents over the notes from measure 5 onwards. The piece ends with a double bar line and repeat dots.

Measures 9-12 of the bass line. The notes are: G3, A3, B3, C4, D4, E4, F4, G4, A4, B4, C5, D5, E5, F5, G5, A5, B5, C6. There are accents over the notes from measure 9 onwards.

Measures 13-16 of the bass line. The notes are: G3, A3, B3, C4, D4, E4, F4, G4, A4, B4, C5, D5, E5, F5, G5, A5, B5, C6. There are accents over the notes from measure 13 onwards. A bracket is placed under measures 14-16.

Measures 17-20 of the bass line. The notes are: G3, A3, B3, C4, D4, E4, F4, G4, A4, B4, C5, D5, E5, F5, G5, A5, B5, C6. There are accents over the notes from measure 17 onwards.

Measures 21-24 of the bass line. The notes are: G3, A3, B3, C4, D4, E4, F4, G4, A4, B4, C5, D5, E5, F5, G5, A5, B5, C6. There are accents over the notes from measure 21 onwards. The piece ends with a double bar line and repeat dots.

Stay Tuned For These Anoucements



**This Message From
Surely Sale
Walawala, Washington**

Champagner Waltz

Coda

Strauss

