

Enjoy Life Waltz

Op. 340
Johann Strauss



Transposed for Solo Cello



JSH



Freuet Euch des Lebens

Introduction

Strauss

Allegro

3 3 3 3

5

3 3 3 3

9

3 3 3 3

13

3 3 3 3

17

3

21

3

25

Waltz

3

30

3

35

3

40

3

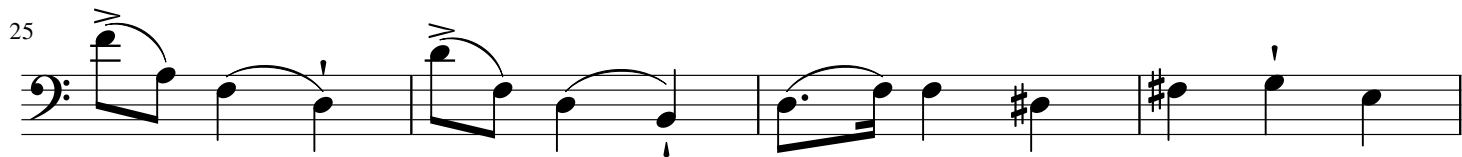
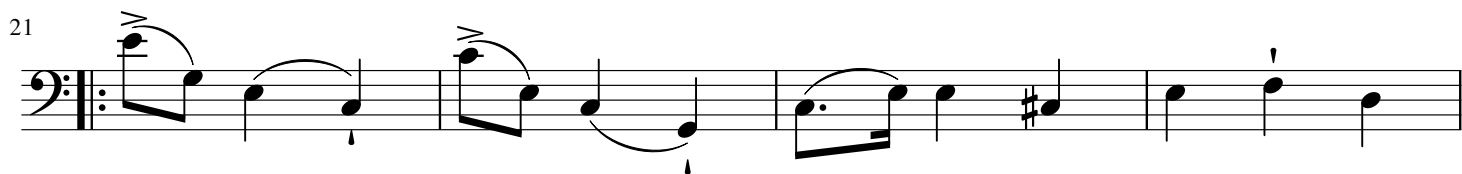
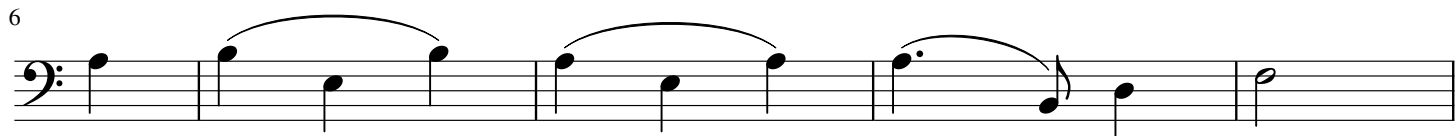
45

3

Freuet Euch des Lebens

Walzer 1

Strauss



Freuet Euch des Lebens

Walzer 2

Strauss

♩ V

6

10

14

18

22

26

30

Freuet Euch des Lebens

Walzer 3

Strauss

Eingang

Measures 1-4: Bass clef, 3/4 time signature, key signature of one sharp (F#). Measure 1: F#2, C3, F#2. Measure 2: F#2, C3, F#2. Measure 3: F#2, C3, F#2, C3, F#2, C3, F#2, C3. Measure 4: F#2, C3, F#2, C3.

5. Waltz

Measures 5-8: Measure 5: F#2, C3, F#2, C3. Measure 6: F#2, C3, F#2, C3. Measure 7: F#2, C3, F#2, C3. Measure 8: F#2, C3, F#2, C3.

Measures 9-12: Measure 9: F#2, C3, F#2, C3. Measure 10: F#2, C3, F#2, C3. Measure 11: F#2, C3, F#2, C3. Measure 12: F#2, C3, F#2, C3.

Measures 13-16: Measure 13: F#2, C3, F#2, C3. Measure 14: F#2, C3, F#2, C3. Measure 15: F#2, C3, F#2, C3. Measure 16: F#2, C3, F#2, C3.

Measures 17-20: Measure 17: F#2, C3, F#2, C3. Measure 18: F#2, C3, F#2, C3. Measure 19: F#2, C3, F#2, C3. Measure 20: F#2, C3, F#2, C3.

Measures 21-24: Measure 21: F#2, C3, F#2, C3. Measure 22: F#2, C3, F#2, C3. Measure 23: F#2, C3, F#2, C3. Measure 24: F#2, C3, F#2, C3.

Measures 25-28: Measure 25: F#2, C3, F#2, C3. Measure 26: F#2, C3, F#2, C3. Measure 27: F#2, C3, F#2, C3. Measure 28: F#2, C3, F#2, C3.

Measures 29-32: Measure 29: F#2, C3, F#2, C3. Measure 30: F#2, C3, F#2, C3. Measure 31: F#2, C3, F#2, C3. Measure 32: F#2, C3, F#2, C3.

Measures 33-38: Measure 33: F#2, C3, F#2, C3. Measure 34: F#2, C3, F#2, C3. Measure 35: F#2, C3, F#2, C3. Measure 36: F#2, C3, F#2, C3. Measure 37: F#2, C3, F#2, C3. Measure 38: F#2, C3, F#2, C3.

Freuet Euch des Lebans

Walzer 4

Strauss

Einsang

Musical notation for the 'Einsang' section, measures 1-4. The key signature is one sharp (F#) and the time signature is 3/4. The notation is written in bass clef. Measure 1 starts with a common time signature (C) and a 3/4 time signature. The melody consists of quarter and eighth notes.

Musical notation for the 'Waltz' section, measures 4-7. The key signature is one sharp (F#) and the time signature is 3/4. The notation is written in bass clef. Measure 4 starts with a repeat sign and a 'V' dynamic marking. The melody consists of quarter and eighth notes.

Musical notation for the 'Waltz' section, measures 8-11. The key signature is one sharp (F#) and the time signature is 3/4. The notation is written in bass clef. Measures 8 and 10 contain wavy hairpins (trills) over the notes.

Musical notation for the 'Waltz' section, measures 12-15. The key signature is one sharp (F#) and the time signature is 3/4. The notation is written in bass clef. The melody consists of quarter and eighth notes.

Musical notation for the 'Waltz' section, measures 16-19. The key signature is one sharp (F#) and the time signature is 3/4. The notation is written in bass clef. Measures 16 and 18 contain wavy hairpins (trills) over the notes. Measure 19 ends with a double bar line and repeat dots.

Musical notation for the 'Waltz' section, measures 20-24. The key signature is one sharp (F#) and the time signature is 3/4. The notation is written in bass clef. Measure 20 starts with a repeat sign and a 'y' dynamic marking. The melody consists of quarter and eighth notes.

Musical notation for the 'Waltz' section, measures 25-29. The key signature is one sharp (F#) and the time signature is 3/4. The notation is written in bass clef. Measures 27, 28, and 29 contain 'v' dynamic markings over the notes.

Musical notation for the 'Waltz' section, measures 30-34. The key signature is one sharp (F#) and the time signature is 3/4. The notation is written in bass clef. The melody consists of quarter and eighth notes.

Musical notation for the 'Waltz' section, measures 35-38. The key signature is one sharp (F#) and the time signature is 3/4. The notation is written in bass clef. Measures 35-37 contain the main melody. Measure 38 contains two endings: '1.' and '2. D.S.' (Da Capo).

Freuet Euch des Lebens

Walzer 5

Strauss

Eingang

Measures 1-4: Bass clef, 3/4 time signature. Measure 1: G2, B2. Measure 2: A2, C3. Measure 3: D3, E3. Measure 4: F3, G3.

5. Walz

Measures 5-8: Measure 5: G3, A3. Measure 6: B3, C4. Measure 7: D4, E4. Measure 8: F4, G4.

Measures 9-12: Measure 9: A4, B4. Measure 10: C5, D5. Measure 11: E5, F5. Measure 12: G5, A5.

Measures 13-16: Measure 13: B5, C6. Measure 14: D6, E6. Measure 15: F6, G6. Measure 16: A6, B6.

Measures 17-23: Measure 17: C7, D7. Measure 18: E7, F7. Measure 19: G7, A7. Measure 20: B7, C8. Measure 21: D8, E8. Measure 22: F8, G8. Measure 23: A8, B8. First ending: C8, D8. Second ending: E8, F8. *Finz*

Measures 24-27: Measure 24: G8, A8. Measure 25: B8, C9. Measure 26: D9, E9. Measure 27: F9, G9.

Measures 28-31: Measure 28: A9, B9. Measure 29: C10, D10. Measure 30: E10, F10. Measure 31: G10, A10.

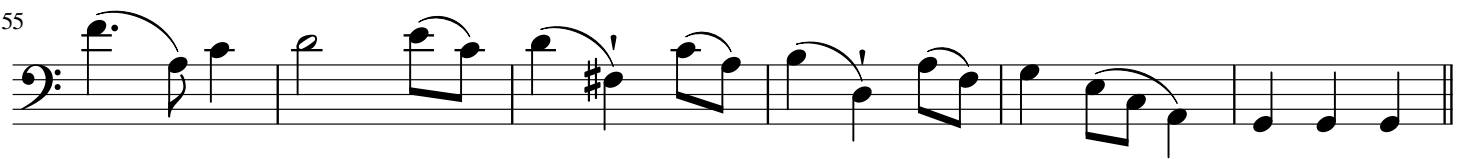
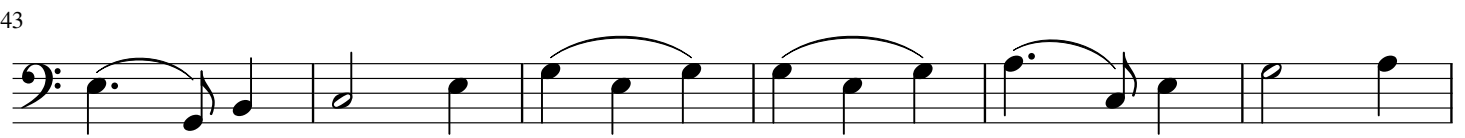
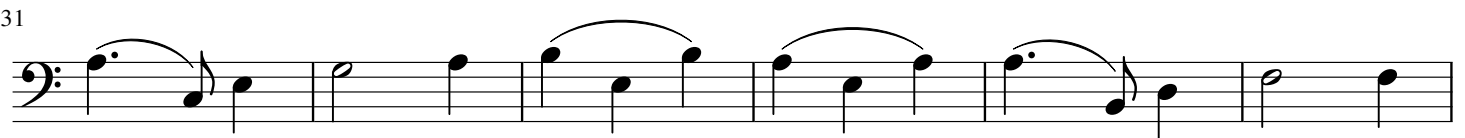
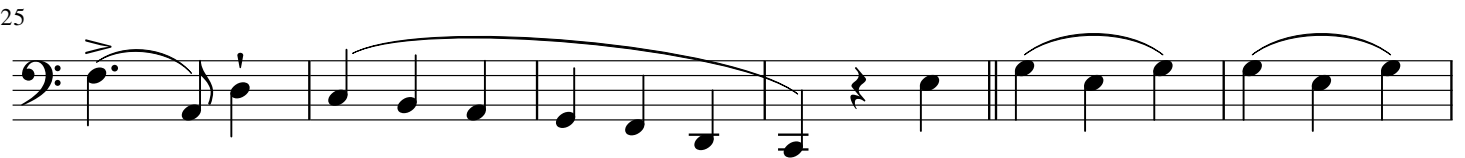
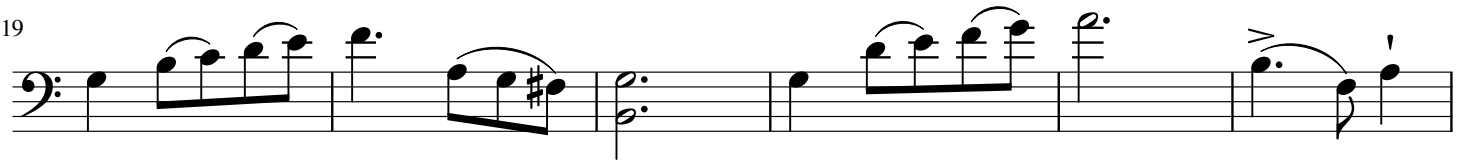
Measures 32-35: Measure 32: B10, C11. Measure 33: D11, E11. Measure 34: F11, G11. Measure 35: A11, B11.

Measures 36-40: Measure 36: C12, D12. Measure 37: E12, F12. Measure 38: G12, A12. Measure 39: B12, C13. Measure 40: D13, E13. *D.S. al Fine*

Freuet Euch des Lebens

Coda

Strauss



Freuet Euch des Lebens

Coda Continuzd

Strauss

61

67

73

79

85

91

97

103

109

115