

Iris - Walzer  
Für Solo Cello

Dem hochw. k. k. Hofrathen Herrn  
**CARL VON GERVAIS**  
Hofrath und Bothschafts - Sekretär am k. k. Hofe  
hochachtungsvoll gewidmet  
von  
**JOHANN STRAUSS.**



No 6779.

Eingetragen in das Archiv der vereinigten Musikalienhändler.

Preis 45 Kr. C. M.  
12. 997.

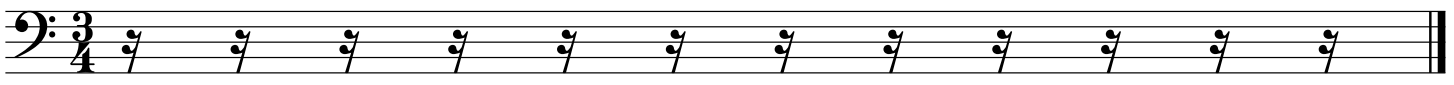
Wien, bei Tobias Haslinger,

Berlin, bei T. Trautwein.

k. k. Hof- und priv. Kunst- und Musikalienhändler.

Frankfurt, bei C. André.

MS. US. 01/25/2016  
JSH



# Iris-Walzer

## Introduction

Strauss

Allegro

Musical notation for the first staff of the introduction, measures 1-5. The key signature is one flat (B-flat), and the time signature is 3/4. The music begins with a quarter rest, followed by a dotted quarter note, then a half note, and a quarter note. A slur covers measures 2, 3, and 4, containing eighth notes. Measure 5 contains a quarter note and a half note. A dynamic marking of *ff* is present above the final note.

6

Musical notation for the second staff of the introduction, measures 6-7. Measure 6 contains a half note and a quarter note. Measure 7 contains a half note and a quarter note. A dynamic marking of *ff* is present above the final note.

10

Musical notation for the third staff of the introduction, measures 10-14. The music begins with a quarter rest, followed by a dotted quarter note, then a half note, and a quarter note. A slur covers measures 11, 12, and 13, containing eighth notes. Measure 14 contains a quarter note and a half note. A dynamic marking of *ff* is present above the final note.

15

Musical notation for the fourth staff of the introduction, measures 15-18. Measure 15 contains a half note and a quarter note. Measure 16 contains a half note and a quarter note. Measure 17 contains a half note and a quarter note. Measure 18 contains a half note and a quarter note. A dynamic marking of *ff* is present above the final note.

19

ri- tar- d. ..

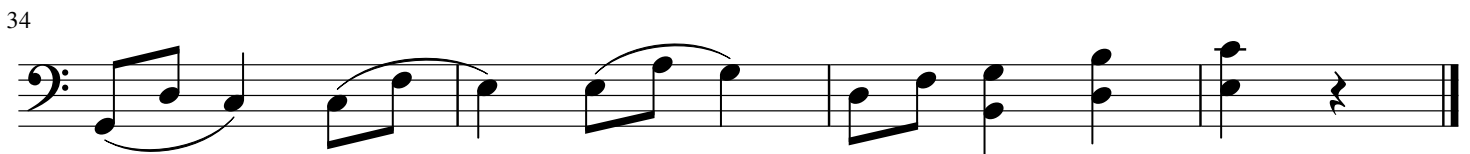
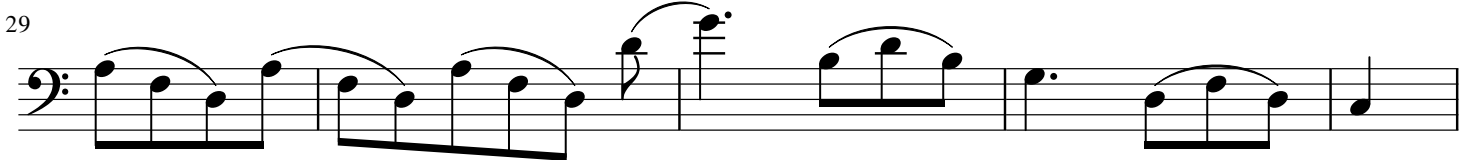
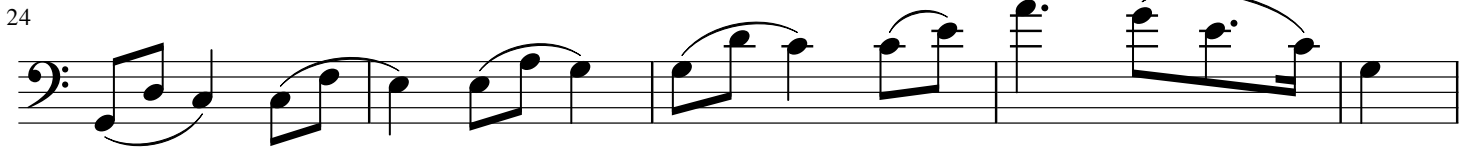
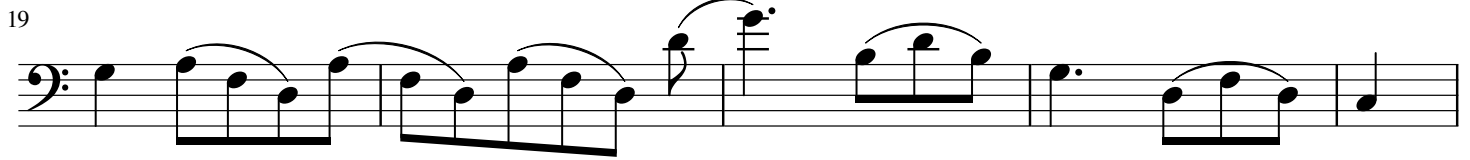
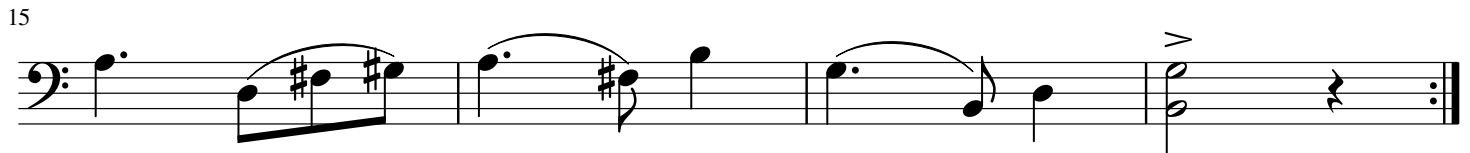
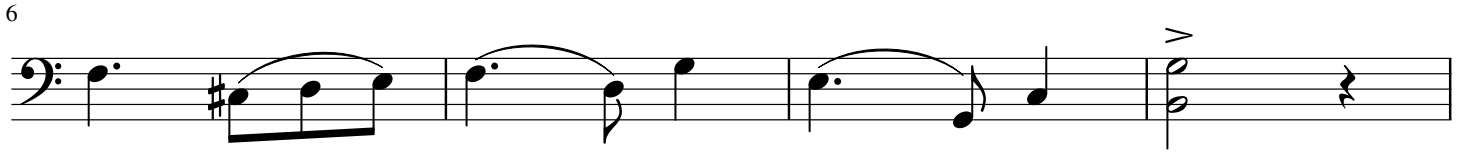
Musical notation for the fifth staff of the introduction, measures 19-22. Measure 19 contains a quarter note and a quarter note. Measure 20 contains a quarter note and a quarter note. Measure 21 contains a quarter note and a quarter note. Measure 22 contains a quarter note and a quarter note. A dynamic marking of *ff* is present above the final note.

# Iris-Walzer

## Walzer 1

Strauss

Waltz



# Iris-Walzer

## Waltz 2

Strauss

1

6

11

16

21

26

31

36

# Iris-Walzer

## Walzer 3

Strauss

6

6

11

16

21

26

31

# Iris-Walzer

## Walzer 4

Strauss

1

5

9

13

17

21

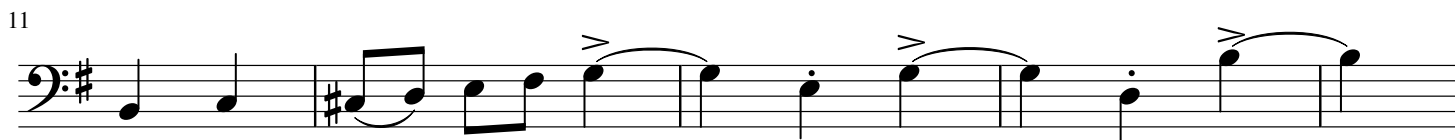
25

29

# Iris-Walzer

## Walzer 5

Strauss



# Iris-Walzer

Coda

Strauss

1



