

KRÖNEN-MAJESTÄT

für das

CELLO-SOLO

VON

JOHANN STRAUSS.

gute Musik.

Eigentum des Verlegers

N^o 7061

Vertragen in das Archiv des



Verleger in Wien, Markt 11

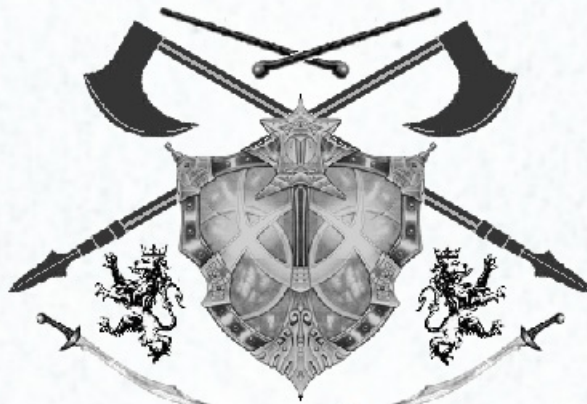
Preis 45 c. (C.)
12 gr.

Wien, bei Tobias Haslinger,

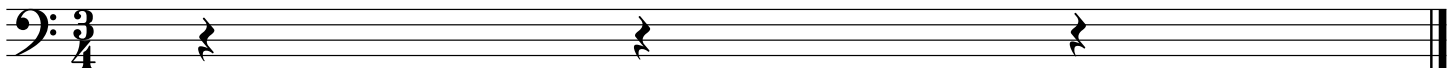
k. k. Hof- und priv. Kauf- und Musikalienhändler.

Leipzig, in dessen Verlags-Expedition bei Hermann und Langbein.

Berlin, bei T. Trautwein.



JSH



Kronungs

Introduction

Strauss

4

7

10

13

16

19

21

24

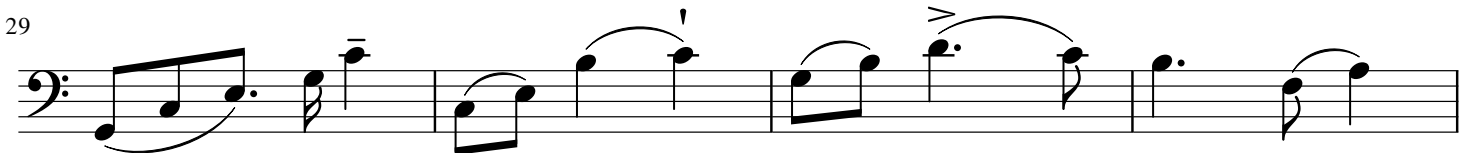
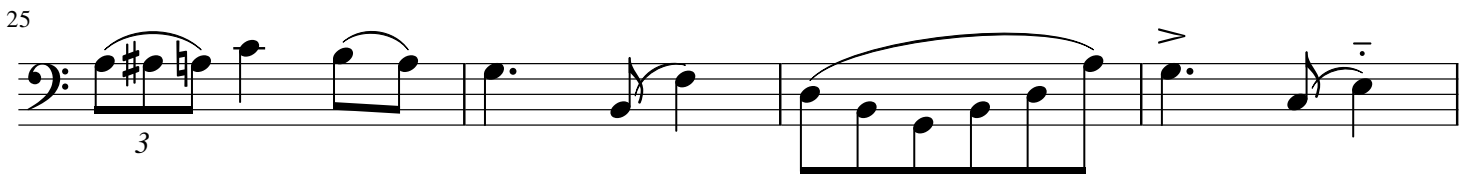
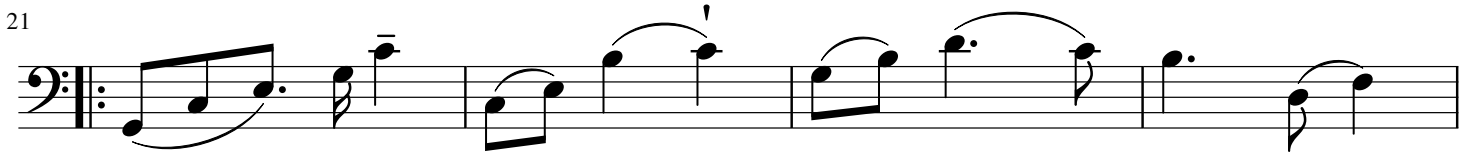
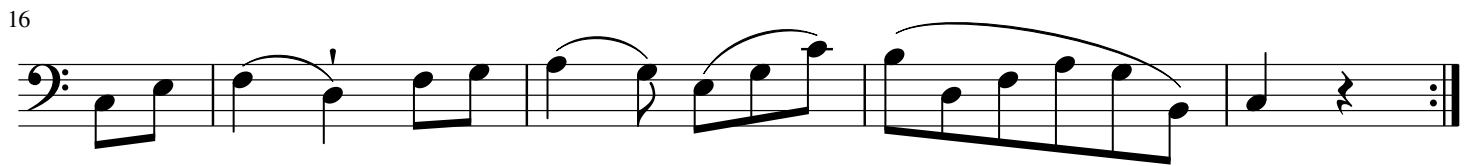
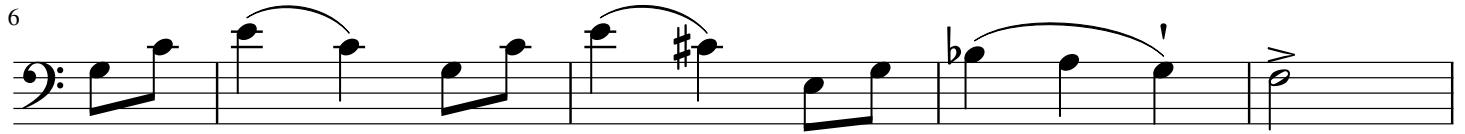
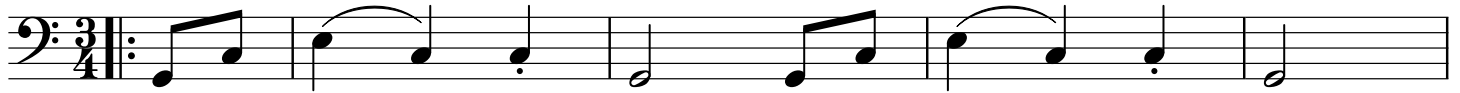
27

30

Kronungs

Walzer 1

Strauss



Kronungs

Walzer 3

Strauss

5

5

9

13

17

22

27

32

Kronungs

Walzer 4

Strauss

5/4

Measures 1-4 of the piece. The key signature has one sharp (F#) and the time signature is 5/4. The notation includes a repeat sign at the beginning and various note values including quarter notes, eighth notes, and sixteenth notes.

5

Measures 5-8. Measure 5 starts with a measure rest. Measures 6-8 feature a melodic line with slurs and accents.

9

Measures 9-12. The melodic line continues with slurs and accents.

13

Measures 13-17. Measure 13 starts with a measure rest. Measures 14-17 show a melodic line with slurs and accents, ending with a double bar line and the word 'Fine'.

18

Measures 18-22. The melodic line continues with slurs and accents.

23

Measures 23-27. The melodic line continues with slurs and accents.

28

Measures 28-32. The melodic line continues with slurs and accents.

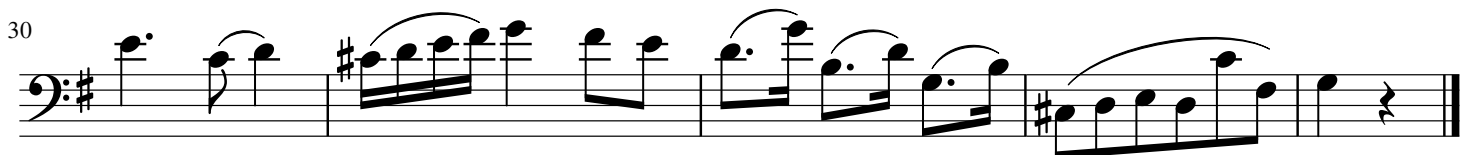
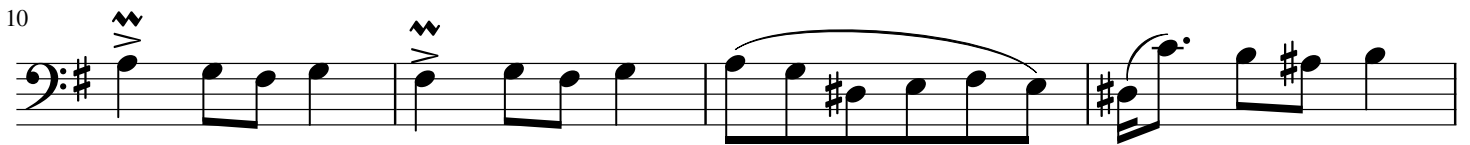
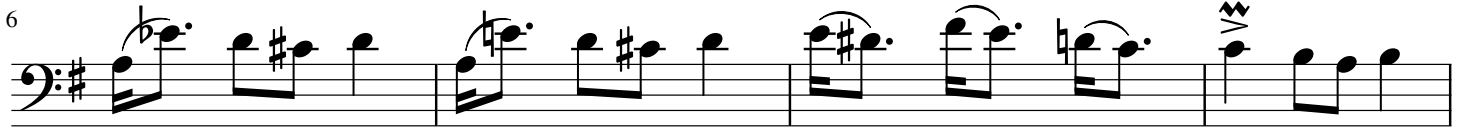
33

Measures 33-36. The melodic line continues with slurs and accents, ending with a double bar line and the word 'D.S.'.

Kronungs

Walzer 5

Strauss



Kronungs

Coda

Strauss

First musical staff in bass clef, 3/4 time signature. It begins with a treble clef and a key signature of one sharp (F#). The melody consists of quarter and eighth notes, ending with a half note chord.

5

Second musical staff, starting at measure 5. It features a more active melody with eighth and sixteenth notes, ending with a double bar line.

10

Third musical staff, starting at measure 10. It continues the melodic line with various note values and rests, ending with a half note.

15

Fourth musical staff, starting at measure 15. It features a similar melodic pattern to the previous staff, ending with a half note.

20

Fifth musical staff, starting at measure 20. It continues the melodic development with eighth and sixteenth notes, ending with a half note.

24

Sixth musical staff, starting at measure 24. It features a melodic line with eighth notes and rests, ending with a half note.

29

Seventh musical staff, starting at measure 29. It includes a trill and a fermata, ending with a half note.

34

Eighth musical staff, starting at measure 34. It features a melodic line with eighth notes and rests, ending with a half note.

38

Ninth musical staff, starting at measure 38. It continues the melodic line with eighth notes and rests, ending with a half note.

42

Tenth musical staff, starting at measure 42. It features a melodic line with eighth notes and rests, ending with a half note.

