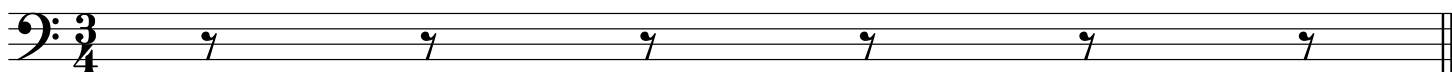


VICTORIEN
WALZER
For
Solo Cello
Arranged & Transposed
JOHANN STRAUSS
265^e Werk.



MS, US

01/31/2017

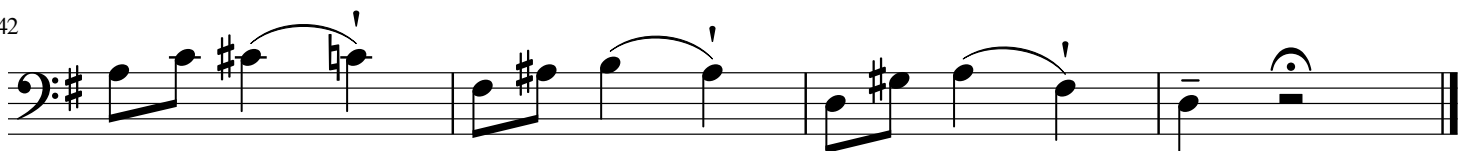
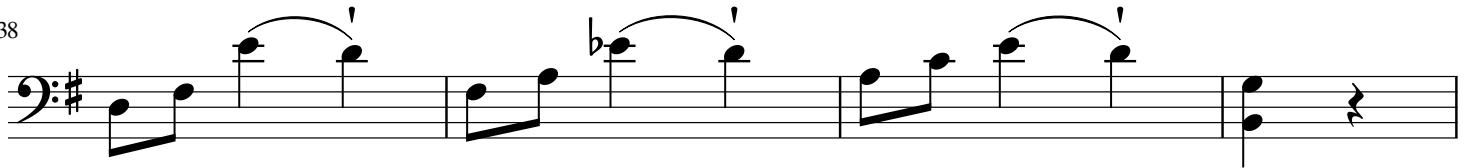
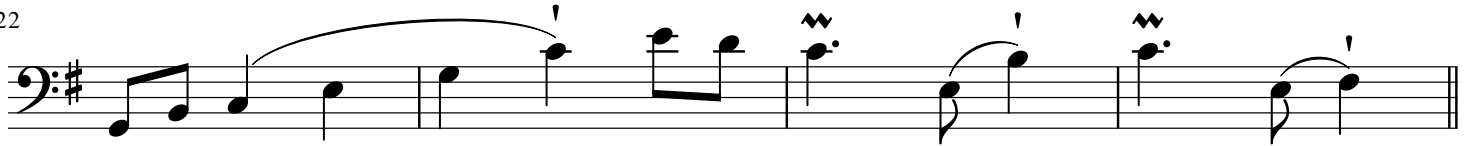
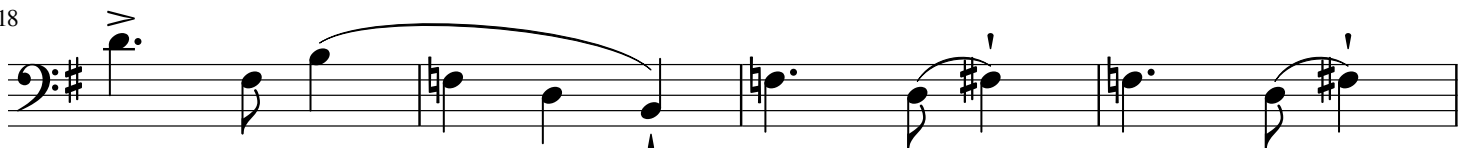
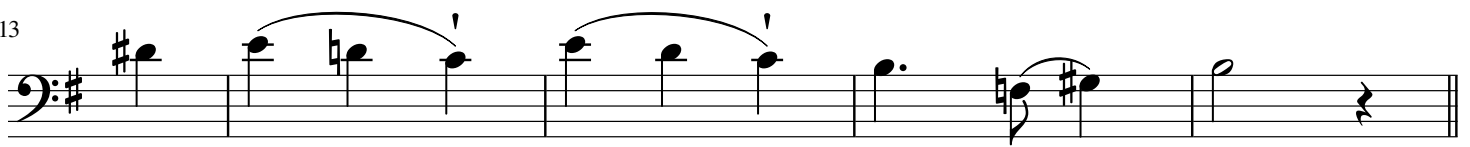
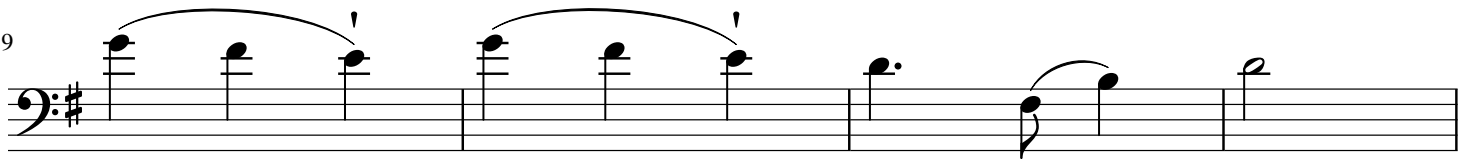


Motoren

Introduction

Strauss

Allegro



Motoren

Walzer 1

Strauss

Walzer

6

11

16

21

26

31

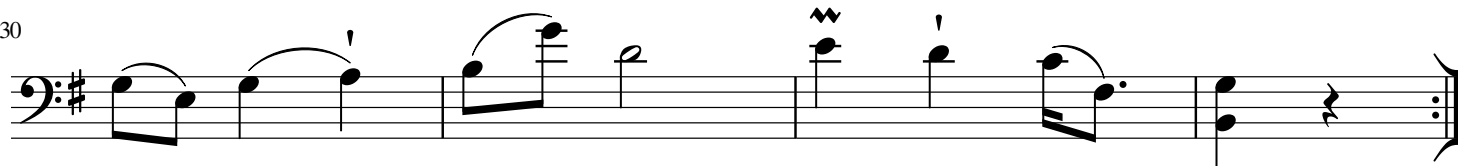
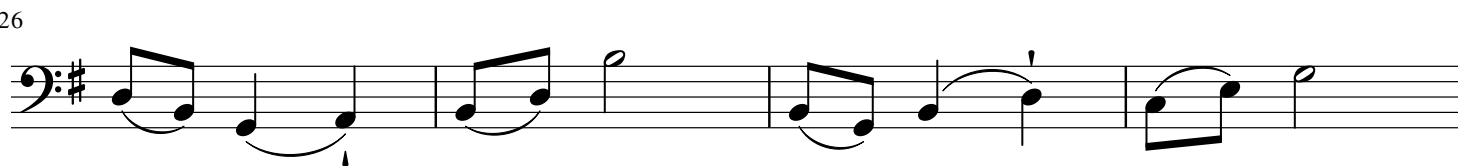
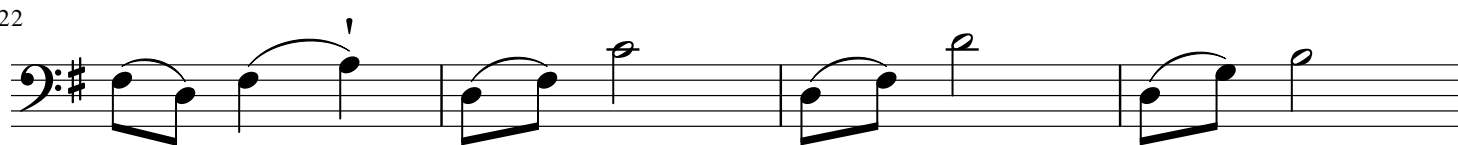
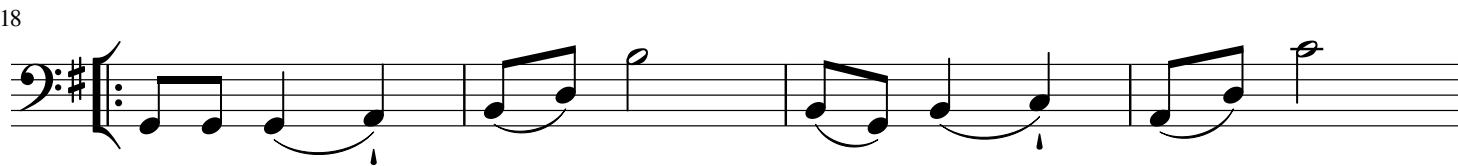
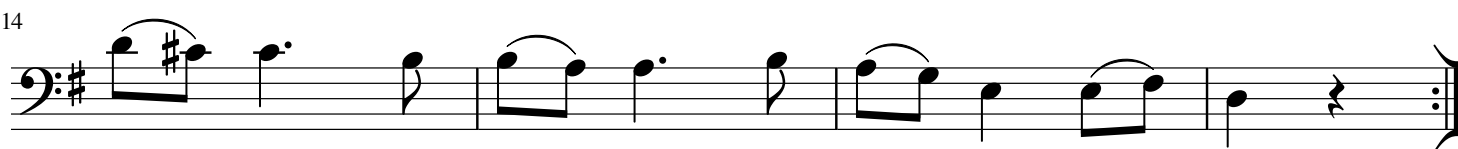
36

JSH 3

Motoren

Walzer 2

Strauss



Motoren

Walzer 3

Strauss

5

9

13

17

21

26

31

36

JSH

Motoren

Walzer 4

Strauss

First staff of music, bass clef, key signature of two sharps (F# and C#), 3/4 time signature. It begins with a melodic line of eighth notes: F#4, G4, A4, B4, C5, B4, A4, G4. This is followed by a dotted quarter note F#4, a quarter note G4, a dotted quarter note A4, and a quarter note B4. The staff ends with a double bar line and repeat dots.

5

Second staff of music, starting at measure 5. It begins with a repeat sign. The melody continues with a dotted quarter note F#4, a quarter note G4, a dotted quarter note A4, and a quarter note B4. This is followed by a dotted quarter note C5, a quarter note B4, a dotted quarter note A4, and a quarter note G4. The staff ends with a double bar line and repeat dots.

10

Third staff of music, starting at measure 10. It begins with a dotted quarter note F#4, a quarter note G4, a dotted quarter note A4, and a quarter note B4. This is followed by a dotted quarter note C5, a quarter note B4, a dotted quarter note A4, and a quarter note G4. The staff ends with a double bar line and repeat dots.

15

Fourth staff of music, starting at measure 15. It begins with a dotted quarter note F#4, a quarter note G4, a dotted quarter note A4, and a quarter note B4. This is followed by a dotted quarter note C5, a quarter note B4, a dotted quarter note A4, and a quarter note G4. The staff ends with a double bar line and repeat dots.

20

Fifth staff of music, starting at measure 20. It begins with a dotted quarter note F#4, a quarter note G4, a dotted quarter note A4, and a quarter note B4. This is followed by a dotted quarter note C5, a quarter note B4, a dotted quarter note A4, and a quarter note G4. The staff ends with a double bar line and repeat dots.

25

Sixth staff of music, starting at measure 25. It begins with a dotted quarter note F#4, a quarter note G4, a dotted quarter note A4, and a quarter note B4. This is followed by a dotted quarter note C5, a quarter note B4, a dotted quarter note A4, and a quarter note G4. The staff ends with a double bar line and repeat dots.

30

Seventh staff of music, starting at measure 30. It begins with a dotted quarter note F#4, a quarter note G4, a dotted quarter note A4, and a quarter note B4. This is followed by a dotted quarter note C5, a quarter note B4, a dotted quarter note A4, and a quarter note G4. The staff ends with a double bar line and repeat dots.

34

Eighth staff of music, starting at measure 34. It begins with a dotted quarter note F#4, a quarter note G4, a dotted quarter note A4, and a quarter note B4. This is followed by a dotted quarter note C5, a quarter note B4, a dotted quarter note A4, and a quarter note G4. The staff ends with a double bar line and repeat dots.

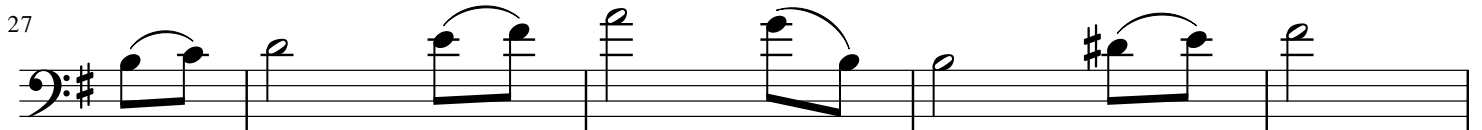
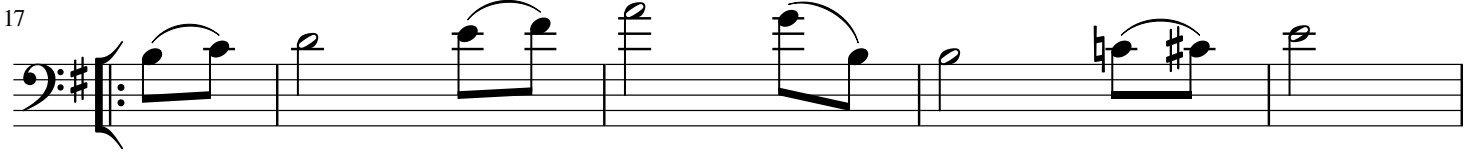
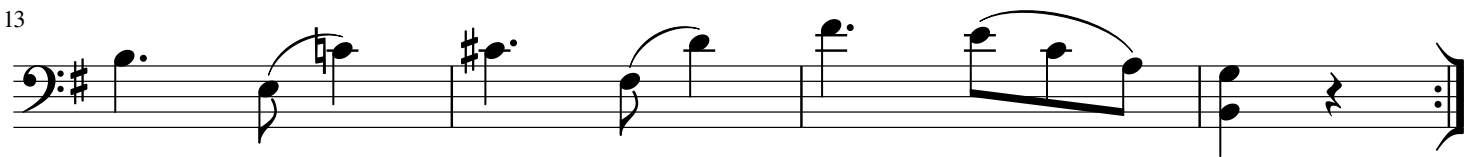
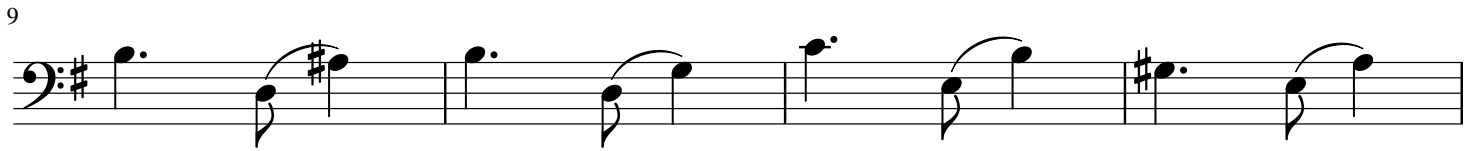
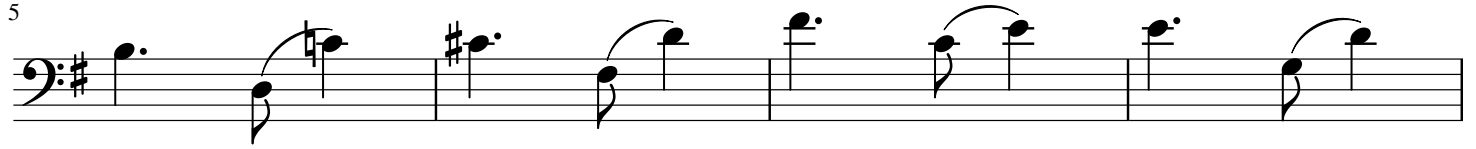
38

Ninth staff of music, starting at measure 38. It begins with a dotted quarter note F#4, a quarter note G4, a dotted quarter note A4, and a quarter note B4. This is followed by a dotted quarter note C5, a quarter note B4, a dotted quarter note A4, and a quarter note G4. The staff ends with a double bar line and repeat dots.

Motoren

Walzer 5

Strauss



Motoren

Coda Continued

Strauss

52

56

60

64

68

73

77

81

85

90

95