

Walzer
Johann Strauss

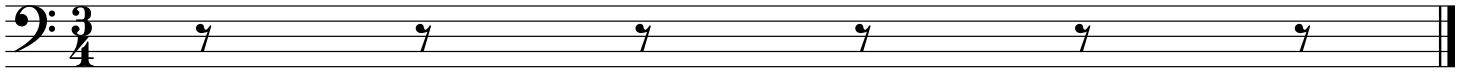
Transposed & Arranged for Solo Cello

Wien, bei Tobias Haslinger.



MS, US

04/09/2017



Palm-Zweige

Walzer

Walzer 1

Strauss

First staff of music, bass clef, 3/4 time signature. It begins with a repeat sign and a first ending bracket. The notes are: G2 (quarter), A2 (quarter), B2 (quarter), C3 (quarter), D3 (quarter), E3 (quarter), F3 (quarter), G3 (quarter).

Second staff of music, bass clef. It begins with a repeat sign and a first ending bracket. The notes are: G3 (quarter), A3 (quarter), B3 (quarter), C4 (quarter), D4 (quarter), E4 (quarter), F4 (quarter), G4 (quarter).

Third staff of music, bass clef. It begins with a repeat sign and a first ending bracket. The notes are: G4 (quarter), A4 (quarter), B4 (quarter), C5 (quarter), D5 (quarter), E5 (quarter), F5 (quarter), G5 (quarter).

Fourth staff of music, bass clef. It begins with a repeat sign and a first ending bracket. The notes are: G5 (quarter), A5 (quarter), B5 (quarter), C6 (quarter), D6 (quarter), E6 (quarter), F6 (quarter), G6 (quarter).

Fifth staff of music, bass clef. It begins with a repeat sign and a first ending bracket. The notes are: G6 (quarter), A6 (quarter), B6 (quarter), C7 (quarter), D7 (quarter), E7 (quarter), F7 (quarter), G7 (quarter).

Sixth staff of music, bass clef. It begins with a repeat sign and a first ending bracket. The notes are: G7 (quarter), A7 (quarter), B7 (quarter), C8 (quarter), D8 (quarter), E8 (quarter), F8 (quarter), G8 (quarter).

Seventh staff of music, bass clef. It begins with a repeat sign and a first ending bracket. The notes are: G8 (quarter), A8 (quarter), B8 (quarter), C9 (quarter), D9 (quarter), E9 (quarter), F9 (quarter), G9 (quarter).

Eighth staff of music, bass clef. It begins with a repeat sign and a first ending bracket. The notes are: G9 (quarter), A9 (quarter), B9 (quarter), C10 (quarter), D10 (quarter), E10 (quarter), F10 (quarter), G10 (quarter).

Palm-Zweige

Walzer 2

Strauss

First measure of the piece, starting with a repeat sign and a fermata over the first note.

5

Second measure, starting with a fermata over the first note.

9

Third measure, starting with a fermata over the first note.

13

Fourth measure, starting with a fermata over the first note.

17

Fifth measure, starting with a fermata over the first note.

22

Sixth measure, starting with a fermata over the first note.

27

Seventh measure, starting with a fermata over the first note.

31

Eighth measure, starting with a fermata over the first note.

35

Ninth measure, starting with a fermata over the first note.

39

Tenth measure, starting with a fermata over the first note.

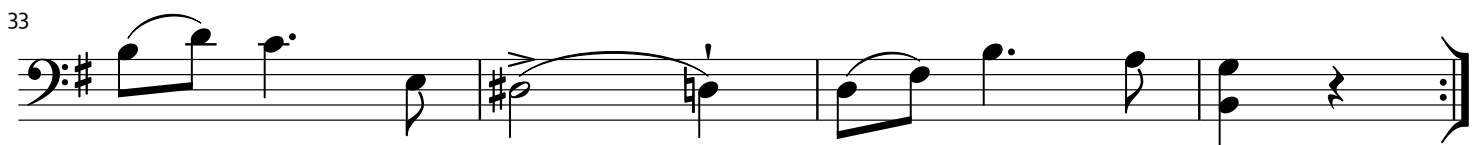
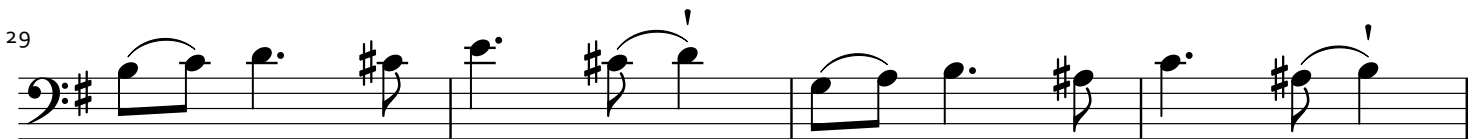
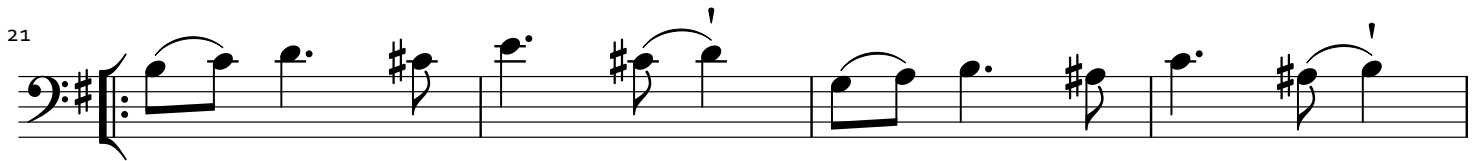
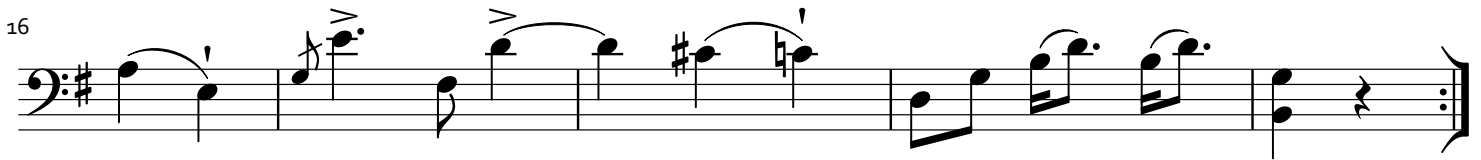
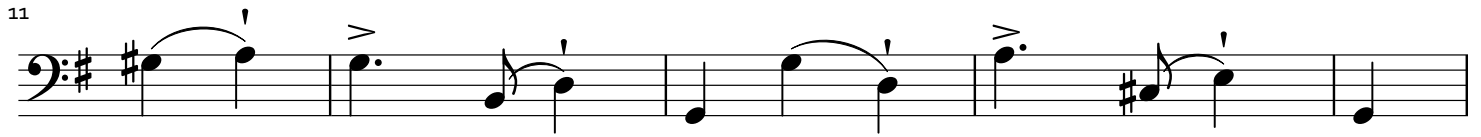
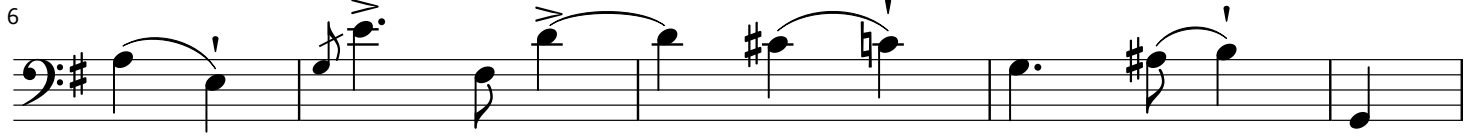
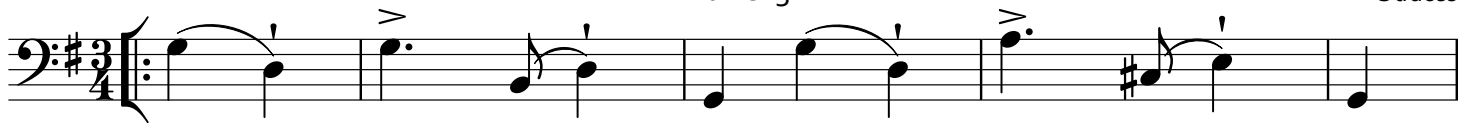
43

Eleventh measure, starting with a fermata over the first note.

Palm-Zweige

Walzer 3

Strauss



Palm-Zweige

Walzer 4

Strauss

Eingang

Measures 1-4: Bass clef, key signature of one sharp (F#), 3/4 time signature. The melody begins with a dotted quarter note on G2, followed by eighth notes on A2 and B2, then a quarter note on C3. The second measure continues with a quarter note on D3, a dotted quarter note on E3, and a quarter note on F#3. The third measure features a quarter note on G3, a quarter rest, and a quarter note on A3. The fourth measure concludes with a dotted quarter note on B3, a quarter note on C4, and a quarter rest.

5 Walzer

Measures 5-8: Continuation of the waltz melody. Measure 5: quarter note on G2, quarter note on A2, quarter note on B2. Measure 6: quarter note on C3, quarter note on D3, quarter note on E3. Measure 7: quarter note on F#3, quarter note on G3, quarter note on A3. Measure 8: quarter note on B3, quarter note on C4, quarter note on D4.

10

Measures 9-12: Continuation of the waltz melody. Measure 9: quarter note on E4, quarter note on F#4, quarter note on G4. Measure 10: quarter note on A4, quarter note on B4, quarter note on C5. Measure 11: quarter note on B4, quarter note on A4, quarter note on G4. Measure 12: quarter note on F#4, quarter note on E4, quarter note on D4.

15

Measures 13-16: Continuation of the waltz melody. Measure 13: quarter note on C4, quarter note on B3, quarter note on A3. Measure 14: quarter note on G3, quarter note on F#3, quarter note on E3. Measure 15: quarter note on D3, quarter note on C3, quarter note on B2. Measure 16: quarter note on A2, quarter note on G2, quarter note on F#2.

20

Measures 17-20: Continuation of the waltz melody. Measure 17: quarter note on E2, quarter note on D2, quarter note on C2. Measure 18: quarter note on B1, quarter note on A1, quarter note on G1. Measure 19: quarter note on F#1, quarter note on E1, quarter note on D1. Measure 20: quarter note on C1, quarter note on B0, quarter note on A0.

24

Measures 21-24: Continuation of the waltz melody. Measure 21: quarter note on G1, quarter note on F#1, quarter note on E1. Measure 22: quarter note on D1, quarter note on C1, quarter note on B0. Measure 23: quarter note on A0, quarter note on G0, quarter note on F#0. Measure 24: quarter note on E0, quarter note on D0, quarter note on C0.

28

Measures 25-28: Continuation of the waltz melody. Measure 25: quarter note on B0, quarter note on A0, quarter note on G0. Measure 26: quarter note on F#0, quarter note on E0, quarter note on D0. Measure 27: quarter note on C0, quarter note on B0, quarter note on A0. Measure 28: quarter note on G0, quarter note on F#0, quarter note on E0.

33

Measures 29-32: Continuation of the waltz melody. Measure 29: quarter note on D1, quarter note on C1, quarter note on B0. Measure 30: quarter note on A0, quarter note on G0, quarter note on F#0. Measure 31: quarter note on E0, quarter note on D0, quarter note on C0. Measure 32: quarter note on B0, quarter note on A0, quarter note on G0.

38

Measures 33-36: Continuation of the waltz melody. Measure 33: quarter note on F#1, quarter note on E1, quarter note on D1. Measure 34: quarter note on C1, quarter note on B0, quarter note on A0. Measure 35: quarter note on G0, quarter note on F#0, quarter note on E0. Measure 36: quarter note on D0, quarter note on C0, quarter note on B0.

43

Measures 37-42: Continuation of the waltz melody. Measure 37: quarter note on A0, quarter note on G0, quarter note on F#0. Measure 38: quarter note on E0, quarter note on D0, quarter note on C0. Measure 39: quarter note on B0, quarter note on A0, quarter note on G0. Measure 40: quarter note on F#0, quarter note on E0, quarter note on D0. Measure 41: quarter note on C0, quarter note on B0, quarter note on A0. Measure 42: quarter note on G0, quarter note on F#0, quarter note on E0.

48

Measures 43-47: Continuation of the waltz melody. Measure 43: quarter note on D1, quarter note on C1, quarter note on B0. Measure 44: quarter note on A0, quarter note on G0, quarter note on F#0. Measure 45: quarter note on E0, quarter note on D0, quarter note on C0. Measure 46: quarter note on B0, quarter note on A0, quarter note on G0. Measure 47: quarter note on F#0, quarter note on E0, quarter note on D0.

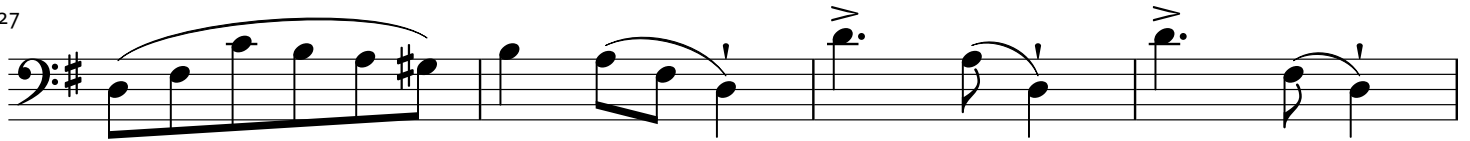
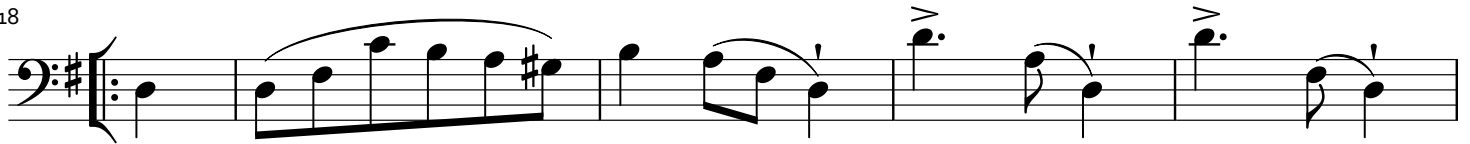
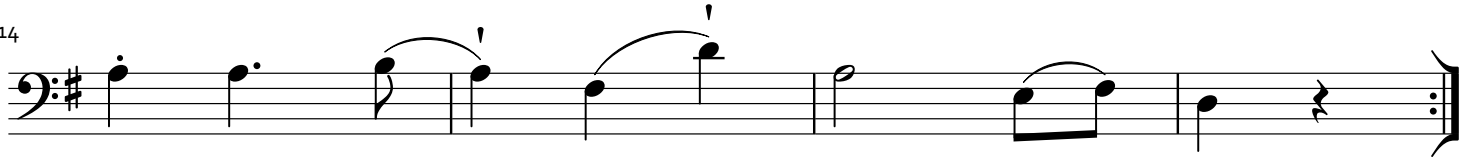
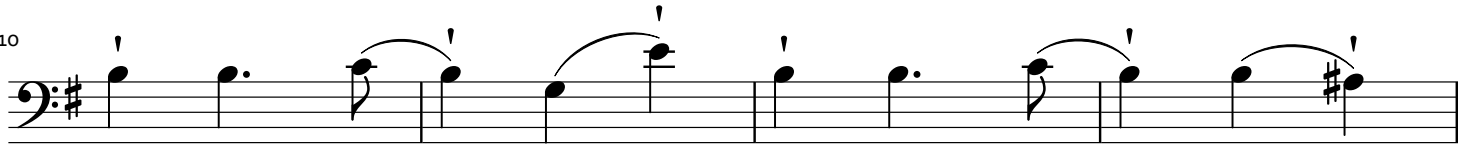
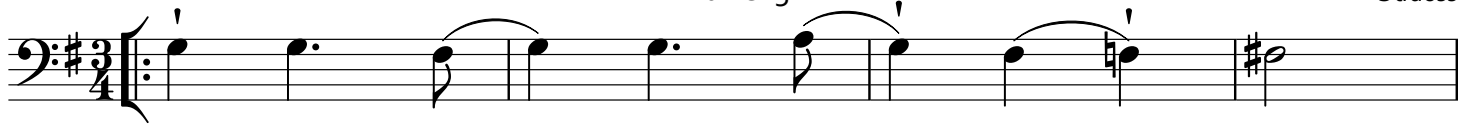
53

Measures 48-52: Continuation of the waltz melody. Measure 48: quarter note on C1, quarter note on B0, quarter note on A0. Measure 49: quarter note on G0, quarter note on F#0, quarter note on E0. Measure 50: quarter note on D0, quarter note on C0, quarter note on B0. Measure 51: quarter note on A0, quarter note on G0, quarter note on F#0. Measure 52: quarter note on E0, quarter note on D0, quarter note on C0.

Palm-Zweige

Walzer 5

Strauss



Palm-Zweige

Coda

Strauss

9

14

19

24

29

33

37

41

45

49

8

Palm-Zweige Coda Cont.

! Strauss

53

57

61

65

69

73

77

82

87

92

97