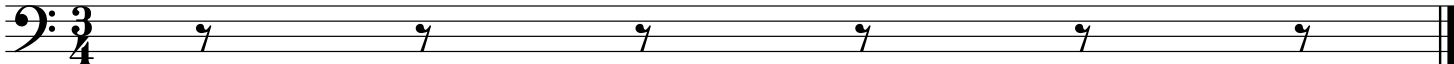




MS, US

05/15/2017



Pfennig

Introduction

Strauss

Allegro

6

11

16

21

26

Pfennig

Walzer 1

Walzer

Strauss

1

6

10

14

18

22

26

30

Pfennig

Walzer 2

Strauss

5

5

9

9

13

13

17

Fine

21

21

25

25

29

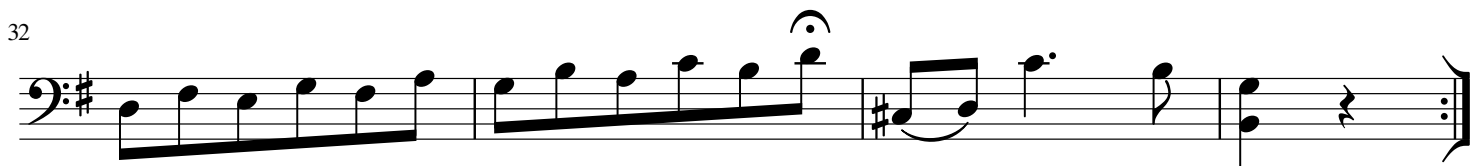
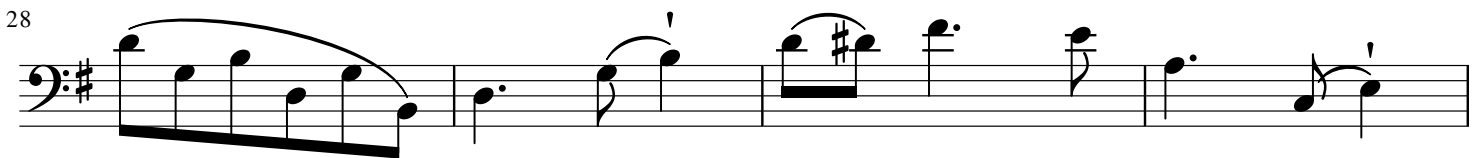
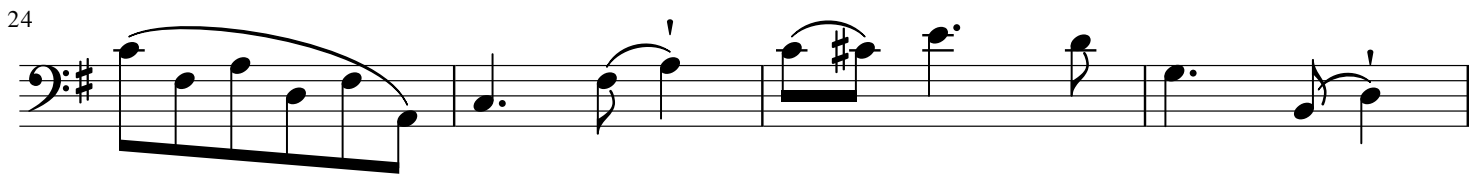
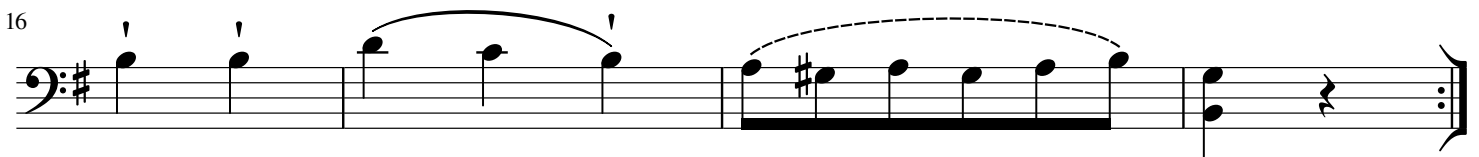
29

D.S.

Pfennig

Walzer 3

Strauss



Pfennig

Walzer 4

Strauss

6

6

10

15

19

23

27

31

Pfennig

Walzer 5

Strauss

Eingang

Musical notation for the 'Eingang' (Introduction) of the waltz 'Pfennig'. It begins in bass clef with a 3/4 time signature. The melody starts with a quarter note G2, followed by a dotted half note G2-A2-B2. The next measure contains a dotted half note C3, and the following measure contains a dotted half note D3. The final measure of the introduction consists of a dotted half note E3.

5. Walzer

Musical notation for the first measure of the waltz 'Pfennig'. It begins with a repeat sign. The melody starts with a quarter note G2, followed by a dotted half note G2-A2-B2. The next measure contains a dotted half note C3, and the following measure contains a dotted half note D3. The final measure of the first measure consists of a dotted half note E3.

9

Musical notation for the second measure of the waltz 'Pfennig'. It begins with a dotted half note G2, followed by a dotted half note A2-B2. The next measure contains a dotted half note C3, and the following measure contains a dotted half note D3. The final measure of the second measure consists of a dotted half note E3.

13

Musical notation for the third measure of the waltz 'Pfennig'. It begins with a dotted half note G2, followed by a dotted half note A2-B2. The next measure contains a dotted half note C3, and the following measure contains a dotted half note D3. The final measure of the third measure consists of a dotted half note E3.

17

Musical notation for the fourth measure of the waltz 'Pfennig'. It begins with a dotted half note G2, followed by a dotted half note A2-B2. The next measure contains a dotted half note C3, and the following measure contains a dotted half note D3. The final measure of the fourth measure consists of a dotted half note E3.

21

Musical notation for the fifth measure of the waltz 'Pfennig'. It begins with a dotted half note G2, followed by a dotted half note A2-B2. The next measure contains a dotted half note C3, and the following measure contains a dotted half note D3. The final measure of the fifth measure consists of a dotted half note E3.

25

Musical notation for the sixth measure of the waltz 'Pfennig'. It begins with a dotted half note G2, followed by a dotted half note A2-B2. The next measure contains a dotted half note C3, and the following measure contains a dotted half note D3. The final measure of the sixth measure consists of a dotted half note E3.

29

Musical notation for the seventh measure of the waltz 'Pfennig'. It begins with a dotted half note G2, followed by a dotted half note A2-B2. The next measure contains a dotted half note C3, and the following measure contains a dotted half note D3. The final measure of the seventh measure consists of a dotted half note E3.

33

Musical notation for the eighth measure of the waltz 'Pfennig'. It begins with a dotted half note G2, followed by a dotted half note A2-B2. The next measure contains a dotted half note C3, and the following measure contains a dotted half note D3. The final measure of the eighth measure consists of a dotted half note E3.

Pfennig

Coda

Strauss

6

11

17

22

28

32

36

40

8

