

PHÄNOMENE.

WALZER

für das
Solo Cello

— 193^{tes} Werk. —

Johann Strauss.

MS. 68

05/19/2017

J & H

3/4

Phänomene

Strauss

Introduction

Andante

Phänomene

Walzer

Walzer 1

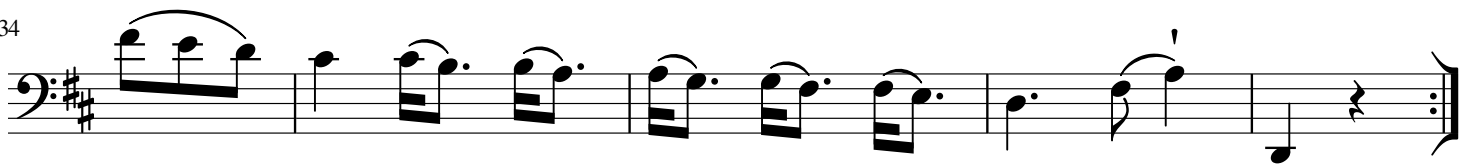
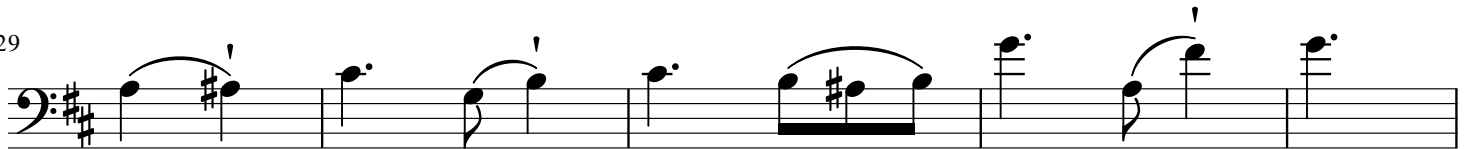
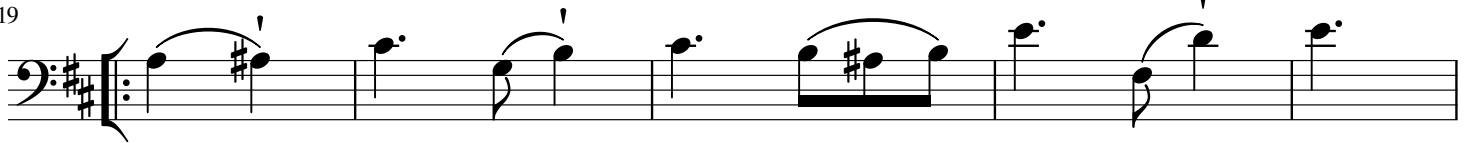
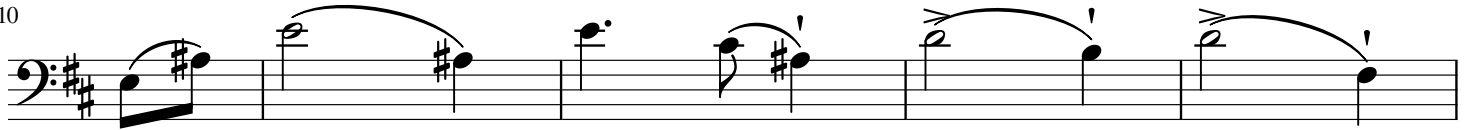
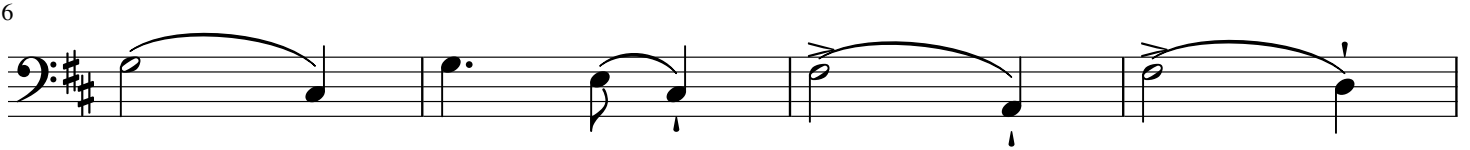
Strauss

6

Phänomene

Walzer 2

Strauss



Phänomene

Walzer 3

Strauss

Eingang

Measures 1-5 of the waltz. The music is in bass clef, 3/4 time, and D major. It features a series of eighth-note chords with a melodic line on top.

6 Walzer

Measures 6-7. Measure 6 begins with a repeat sign. The music continues with eighth-note chords and a melodic line.

10

Measures 8-9. The music continues with eighth-note chords and a melodic line.

14

Measures 10-13. The music continues with eighth-note chords and a melodic line.

18

Measures 14-17. The music continues with eighth-note chords and a melodic line. Measure 17 ends with a double bar line and a repeat sign.

Fine

23

Measures 18-22. The music continues with eighth-note chords and a melodic line.

27

Measures 23-26. The music continues with eighth-note chords and a melodic line.

31

Measures 27-30. The music continues with eighth-note chords and a melodic line.

35

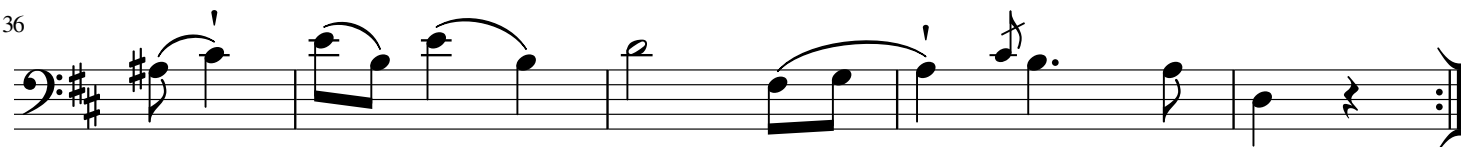
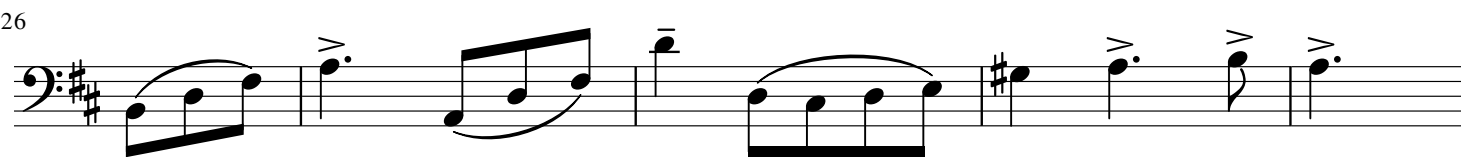
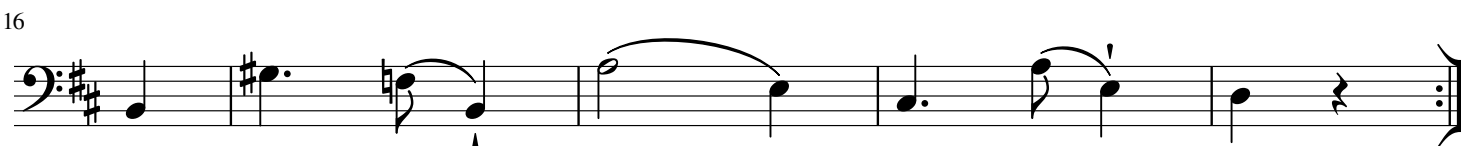
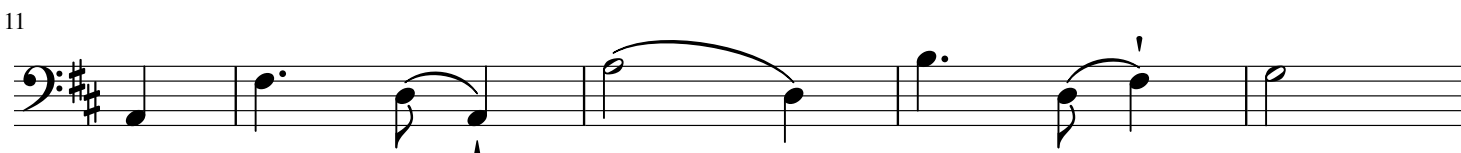
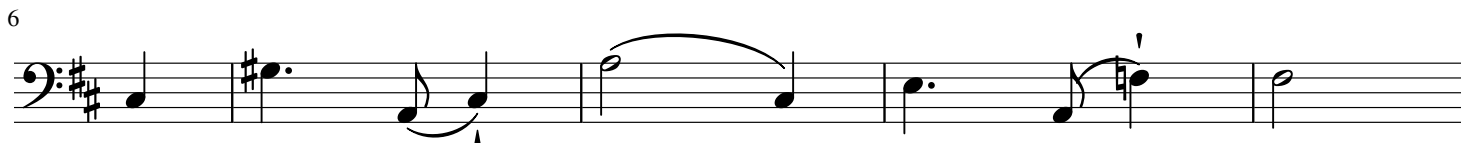
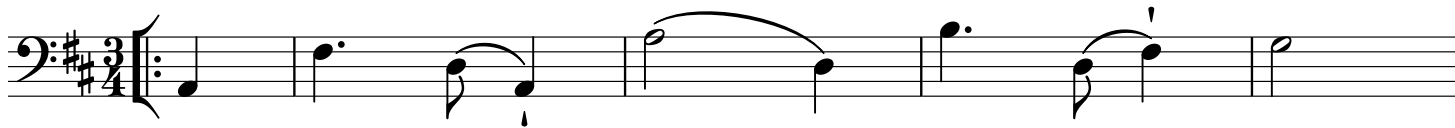
Measures 31-34. The music continues with eighth-note chords and a melodic line. Measure 34 ends with a double bar line and a repeat sign.

D.S.

Phänomene

Walzer 4

Strauss



Phänomene

Walzer 5

Strauss

Eingang

4 Walzer

To Coda

D.S.

Phänomene

Coda

Strauss

6

11

16

21

25

29

33

38

43

48

8

Phänomene

Coda Continued

53

58

62

66

70

74

78

82

87

92

97