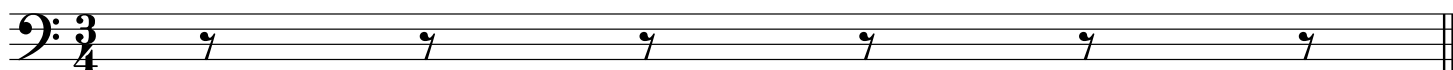


MS. US

07/10/2017



Sangerfahrten

Moderato

Introduction

Strauss

5

9

13

17

21

26

30

34

Con brio

38 Walzer

Sangerfahrten

Walzer 1'

Strauss

1

6

11

16

Fine

21

26

31

36

41

D.S.

Sangerfahrten

Waltzer 2

Strauss

Measures 1-4 of the bass line. Measure 1 starts with a treble clef, a key signature of one sharp (F#), and a 3/4 time signature. It features a triplet of eighth notes (G2, A2, B2) followed by a dotted quarter note (C3). Measures 2-4 continue with eighth and quarter notes, including a slur over measures 2 and 3.

Measures 5-8 of the bass line. Measure 5 begins with a quarter note (C3), a dotted quarter note (D3), and an eighth note (E3). Measures 6-8 continue with eighth and quarter notes, ending with a double bar line.

Measures 9-12 of the bass line. Measure 9 starts with a triplet of eighth notes (G2, A2, B2) followed by a dotted quarter note (C3). Measures 10-12 continue with eighth and quarter notes, including a slur over measures 10 and 11.

Measures 13-16 of the bass line. Measure 13 begins with a quarter note (C3), a dotted quarter note (D3), and an eighth note (E3). Measures 14-16 continue with eighth and quarter notes, including a slur over measures 14 and 15.

Measures 17-20 of the bass line. Measure 17 starts with a quarter note (C3), a dotted quarter note (D3), and an eighth note (E3). Measures 18-20 continue with eighth and quarter notes, including a slur over measures 18 and 19.

Measures 21-24 of the bass line. Measure 21 begins with a quarter note (C3), a dotted quarter note (D3), and an eighth note (E3). Measures 22-24 continue with eighth and quarter notes, including a slur over measures 22 and 23.

Measures 25-28 of the bass line. Measure 25 starts with a quarter note (C3), a dotted quarter note (D3), and an eighth note (E3). Measures 26-28 continue with eighth and quarter notes, including a slur over measures 26 and 27.

Measures 29-32 of the bass line. Measure 29 begins with a quarter note (C3), a dotted quarter note (D3), and an eighth note (E3). Measures 30-32 continue with eighth and quarter notes, including a slur over measures 30 and 31.

Measures 33-36 of the bass line. Measure 33 starts with a quarter note (C3), a dotted quarter note (D3), and an eighth note (E3). Measures 34-36 continue with eighth and quarter notes, including a slur over measures 34 and 35.

Sangerfahrten

Walzer 3

Strauss

1

7

12

17

22

27

31

35

Sangerfahrten

Walzer 4

Strauss

6

11

15

20

25

29

33

37

6

Sangerfahrten

Walzer 5

Strauss

Musical score for 'Sangerfahrten' (Walzer 5) by Strauss, bass clef, 3/4 time signature. The score consists of ten staves of music, numbered 1 through 45. The key signature is one sharp (F#). The music features a variety of rhythmic patterns, including eighth and sixteenth notes, and rests. There are several measures with a whole note, often with a fermata. The score includes dynamic markings such as accents (>) and slurs. The piece concludes with a double bar line and repeat dots.

Sangerfahrten

Coda

Strauss

5

9

13

17

21

25

29

34

38

42

Sangerfahrten

Coda Continued

46

51

56

61

66

71

76

82

87

92

97