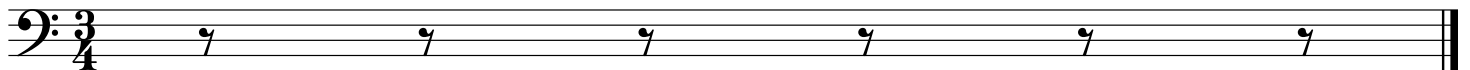
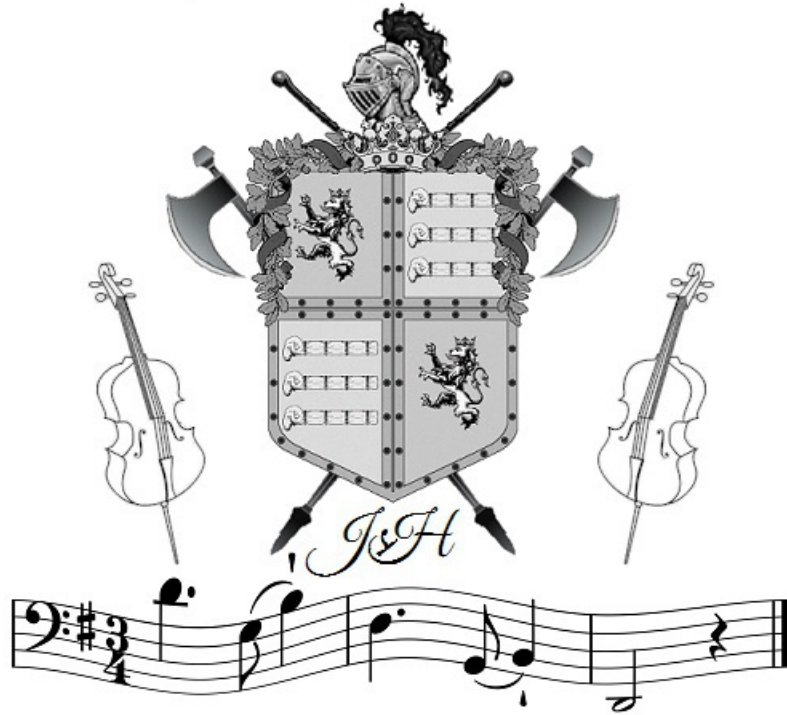


WIENER **-TIVOLA-** MUSIK  
für das  
**SOLO - CELLO**  
von  
**JOHANN STRAUSS**



# Tivoli

Walzer1

Strauss

1. Musical staff 1: Bass clef, 3/4 time signature. Measures 1-5. The melody starts with a quarter note G2, followed by eighth notes A2, B2, C3, D3, E3, F3, G3. There are repeat signs over the first and second measures.

2. Musical staff 2: Bass clef. Measures 6-10. Measure 6 has a repeat sign. Measures 7-10 show a melodic line with slurs and accents.

3. Musical staff 3: Bass clef. Measures 11-15. Similar melodic development with slurs and accents.

4. Musical staff 4: Bass clef. Measures 16-20. Continuation of the melodic line.

5. Musical staff 5: Bass clef. Measures 21-25. Continuation of the melodic line.

6. Musical staff 6: Bass clef. Measures 26-30. Continuation of the melodic line.

7. Musical staff 7: Bass clef. Measures 31-35. Continuation of the melodic line.

8. Musical staff 8: Bass clef. Measures 36-40. Continuation of the melodic line.

9. Musical staff 9: Bass clef. Measures 41-45. Continuation of the melodic line.

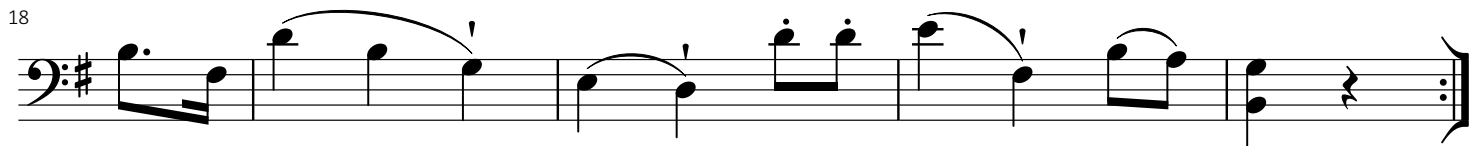
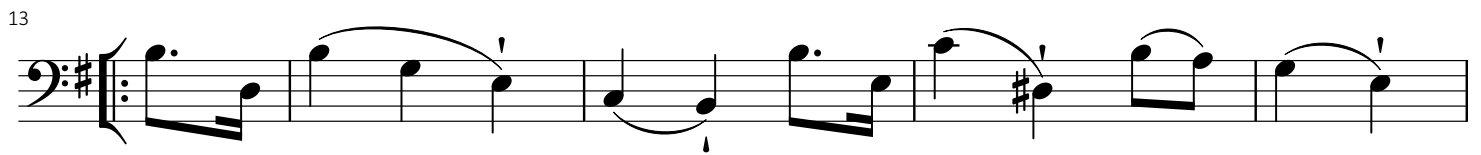
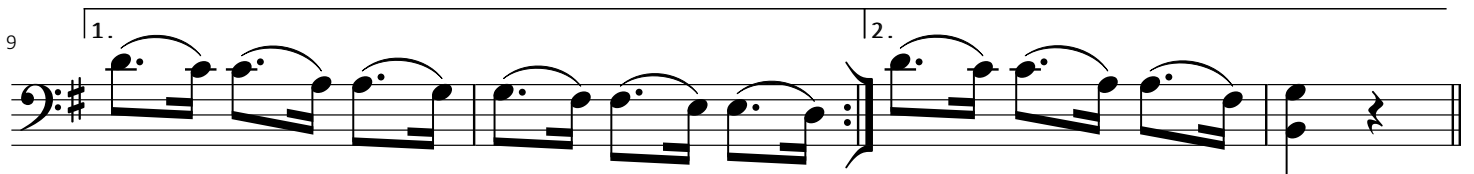
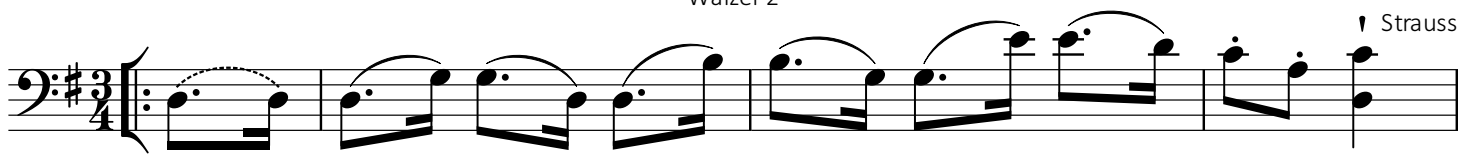
10. Musical staff 10: Bass clef. Measures 46-50. Continuation of the melodic line.

11. Musical staff 11: Bass clef. Measures 51-55. Continuation of the melodic line.

# Tivoli

Walzer 2

! Strauss



# Tivoli

Walzer 3

Strauss

First staff of music, bass clef, 3/4 time signature. It begins with a repeat sign. The notes are: G2, A2, B2, C3, D3, E3, F3, G3, A3, B3, C4, D4, E4, F4, G4, A4, B4, C5.

6

Second staff of music, bass clef. The notes are: G4, A4, B4, C5, D5, E5, F5, G5, A5, B5, C6, D6, E6, F6, G6, A6, B6, C7.

10

Third staff of music, bass clef. The notes are: G4, A4, B4, C5, D5, E5, F5, G5, A5, B5, C6, D6, E6, F6, G6, A6, B6, C7.

14

Fourth staff of music, bass clef. The notes are: G4, A4, B4, C5, D5, E5, F5, G5, A5, B5, C6, D6, E6, F6, G6, A6, B6, C7.

18

Fifth staff of music, bass clef. The notes are: G4, A4, B4, C5, D5, E5, F5, G5, A5, B5, C6, D6, E6, F6, G6, A6, B6, C7.

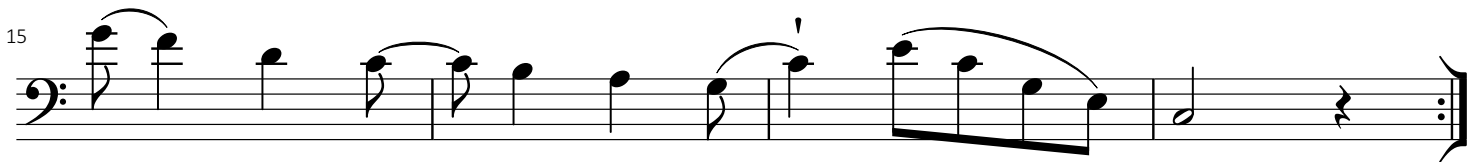
23

Sixth staff of music, bass clef. The notes are: G4, A4, B4, C5, D5, E5, F5, G5, A5, B5, C6, D6, E6, F6, G6, A6, B6, C7.

# Tivoli

Walzer 4

Strauss



# Tivoli

Walzer 5

Strauss

6

10

14

18

23

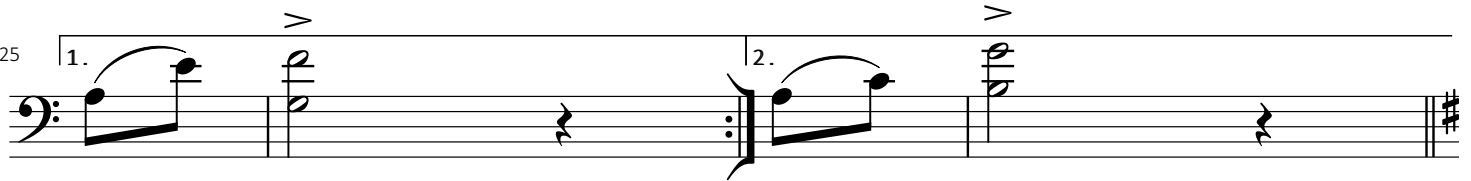
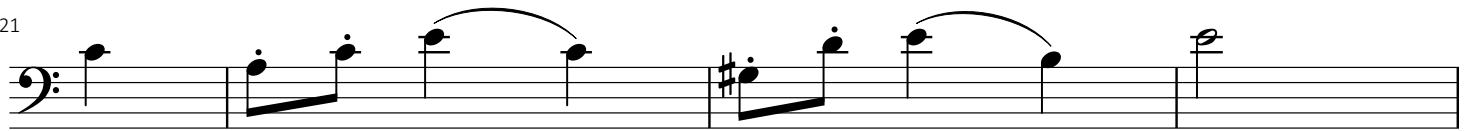
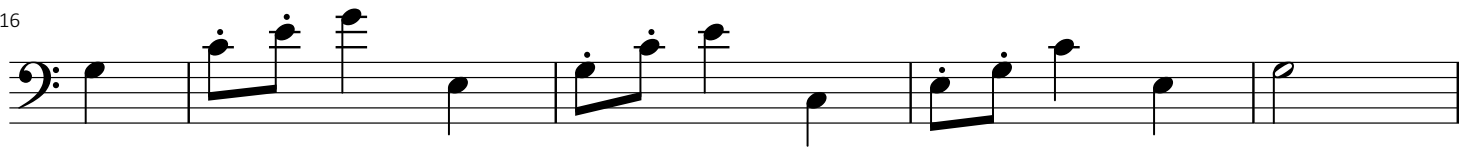
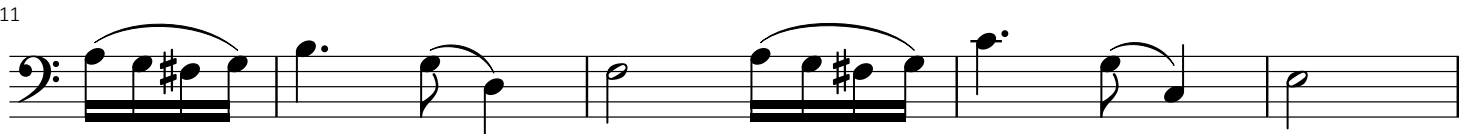
27

31

# Tivoli

Walzer 6

Strauss







# Tivoli

Coda Continued

Strauss

36



41



45



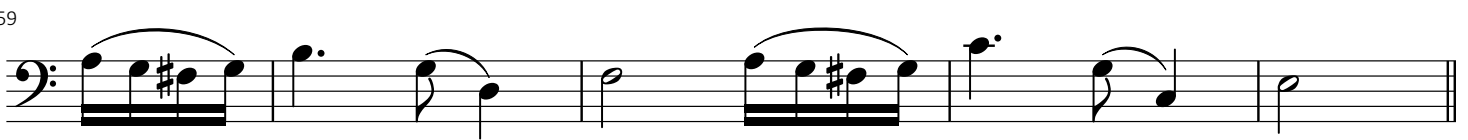
50



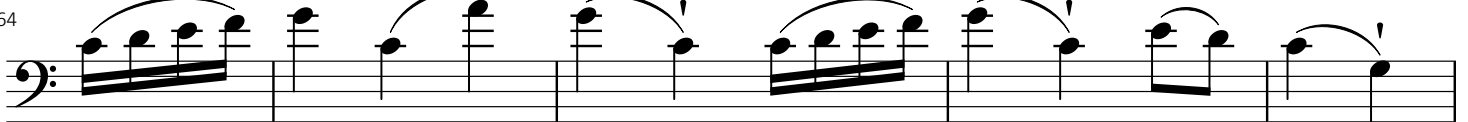
54



59



64



69

