



KayLee Swänger

Compositeur

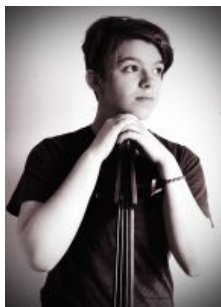
États-Unis

A propos de l'artiste

KayLee Swänger is a cellist, composer, and apprentice orchestra conductor. She specialises in composition for strings, specifically the string quartet and orchestra. She has studied composition for a total of three years, and professionally for almost two under Dr. A. Sanchez. As for cello, KayLee has been studying both in an orchestra and privately for also almost two years.

Page artiste : www.free-scores.com/partitions_gratuites_datcellist.htm

A propos de la pièce



Titre : Miniature pour le Piano en La Mineur, "Die Blumen"

Compositeur : Swänger, KayLee

Droit d'auteur : Copyright © KayLee Swänger

Instrumentation : Piano seul

Style : Romantique

KayLee Swänger sur free-scores.com

Interdiction de diffusion sur d'autres sites Web.



- partager votre interprétation
- commenter la partition
- contacter l'artiste

Piano Miniature in A Minor, "Die Blumen"

"The Flowers"

Dedicated to Feibi.

KayLee Swänger

♩=74 *Grazioso*

Measures 1-6 of the piano miniature. The piece is in 3/4 time and A minor. The first four measures feature a *pp* (pianissimo) dynamic in the bass line, with the right hand playing whole rests. The last two measures feature a *simile* dynamic, with the right hand playing a melodic line and the bass line continuing with chords. The score includes dynamic markings and articulation symbols.

Measures 7-12 of the piano miniature. The right hand begins a melodic line in measure 7, while the bass line continues with chords. The dynamic is *pp*. The score includes dynamic markings and articulation symbols.

Measures 13-18 of the piano miniature. The right hand continues the melodic line, and the bass line continues with chords. The dynamic is *p* (piano). The score includes dynamic markings and articulation symbols.

Measures 19-24 of the piano miniature. The right hand continues the melodic line, and the bass line continues with chords. The dynamic is *mp* (mezzo-piano). The score includes dynamic markings and articulation symbols.

2015 All Rights Reserved.

25

f

* Ped. * Ped. * Ped. * Ped. * Ped. * Ped. * Ped.

mp *pp*

* Ped. * Ped. * Ped. * Ped. * Ped. * Ped. * Ped.

simile *pp*

* Ped. * Ped. * Ped. * Ped. * Ped. * Ped. * Ped.

mf

* Ped. * Ped. * Ped. * Ped. * Ped. * Ped. * Ped.

49 *mp cresc.* *f simile*

Red. * *Red.* * *Red.* * *Red.* * *Red.* * *Red.* *

55 *mp*

Red. * *Red.* * *Red.* * *Red.* * *Red.* * *Red.* *

61 *pp*

Red. * *Red.* * *Red.* * *Red.* *

65 *rit.*

Red. * *Red.* * *Red.* *